



**CONSERVANCY**  
of Southwest Florida  
OUR WATER, LAND, WILDLIFE, FUTURE.

**Protecting Southwest Florida's unique natural environment  
and quality of life ... now and forever.**

**[www.conservancy.org](http://www.conservancy.org)**



## Founded in 1964



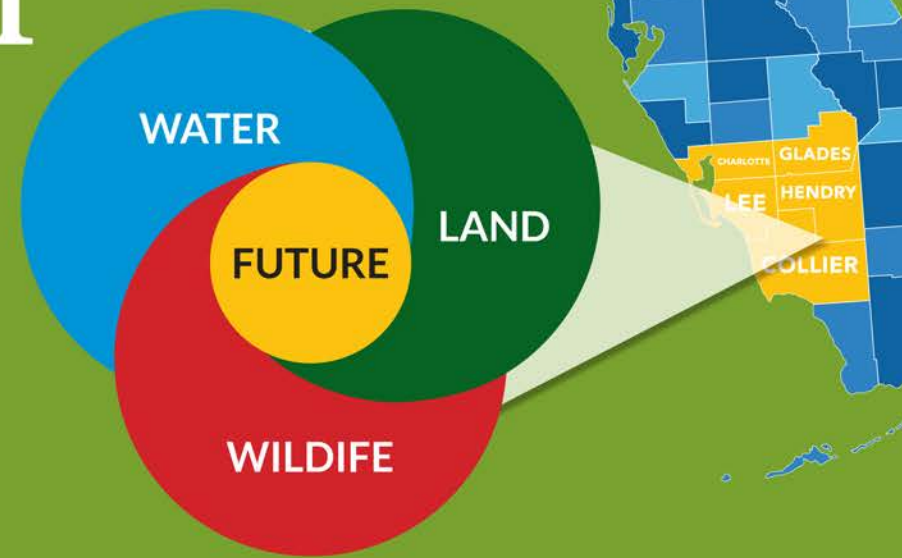
- ▶ Prevented “Road to Nowhere”
- ▶ Grassroots efforts protected Rookery Bay.
- ▶ 21-acre Nature Center in the heart of Naples.



CONSERVANCY  
of Southwest Florida  
OUR WATER, LAND, WILDLIFE, FUTURE.

# Environmental Expertise

For 50 years the Conservancy of Southwest Florida has been a leading environmental advocacy organization. Dedicated to celebrating and protecting Southwest Florida's water, land, wildlife and future, the Conservancy uses the synergy of four teams to meet its mission. These teams include: scientific research, policy, education, and wildlife protection and rehabilitation.



Science and Research



Policy and Advocacy



Wildlife Rehabilitation



Environmental Education  
and Nature Center

- 100 % of donations are used to support local projects.



# Our Work

- ❖ Environmental Science and Research
- ❖ Environmental Policy and Advocacy
- ❖ Environmental Education
- ❖ Von Arx Wildlife Hospital



# Environmental Science and Research



- Water Quality Monitoring Projects
- Mangrove Research
- Western Everglades Restoration Projects
- Sea Turtle Monitoring and Protection Program



# von Arx Wildlife Hospital



- Treats over 3,200 sick, injured, or orphaned native wildlife annually
- Goal is to release as many animals as possible back into their natural habitat.
- If you spot injured wildlife, please call 239.262.CARE



**CONSERVANCY**  
of Southwest Florida  
OUR WATER, LAND, WILDLIFE, FUTURE.

# Environmental Education



- Pre-K
- Elementary
- Middle School
- High School
- Adults
- Summer camp
- STEM workshops



# Policy and Advocacy



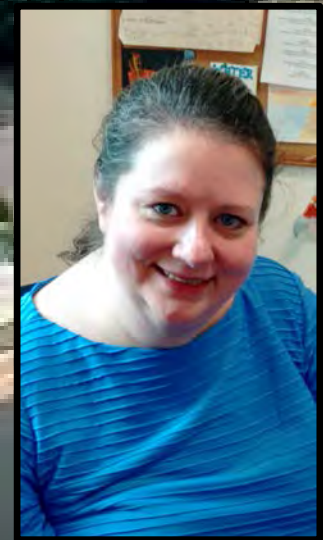


## Natural Resource Specialists:

- Oil and gas legislation
- Listed species protections
- Water quality issues
- Land acquisition
- Everglades restoration



Growth Management Team  
strives to ensure that natural  
resources are protected  
through proper planning &  
growth management  
regulations.



Growth Management Specialists



# Growth Management

## Guiding Principles:

1. We live in an environmentally sensitive area
2. Poorly planned development is costly
3. Thoughtful transportation planning saves money and natural resources
4. Water is our most precious commodity
5. A healthy environment helps protect our community
6. Natural systems provide economic benefits



# After all, our environment is our economy





Listed species

We direct development away from environmentally sensitive areas

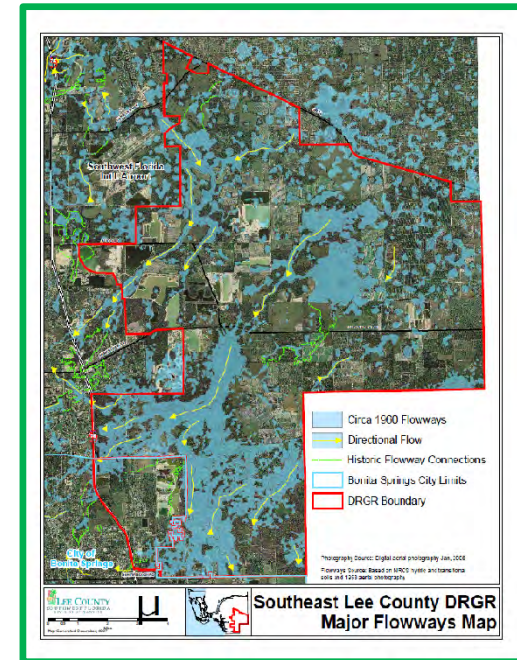
Restoration and preservation



Avoidance /minimization of wetlands impacts



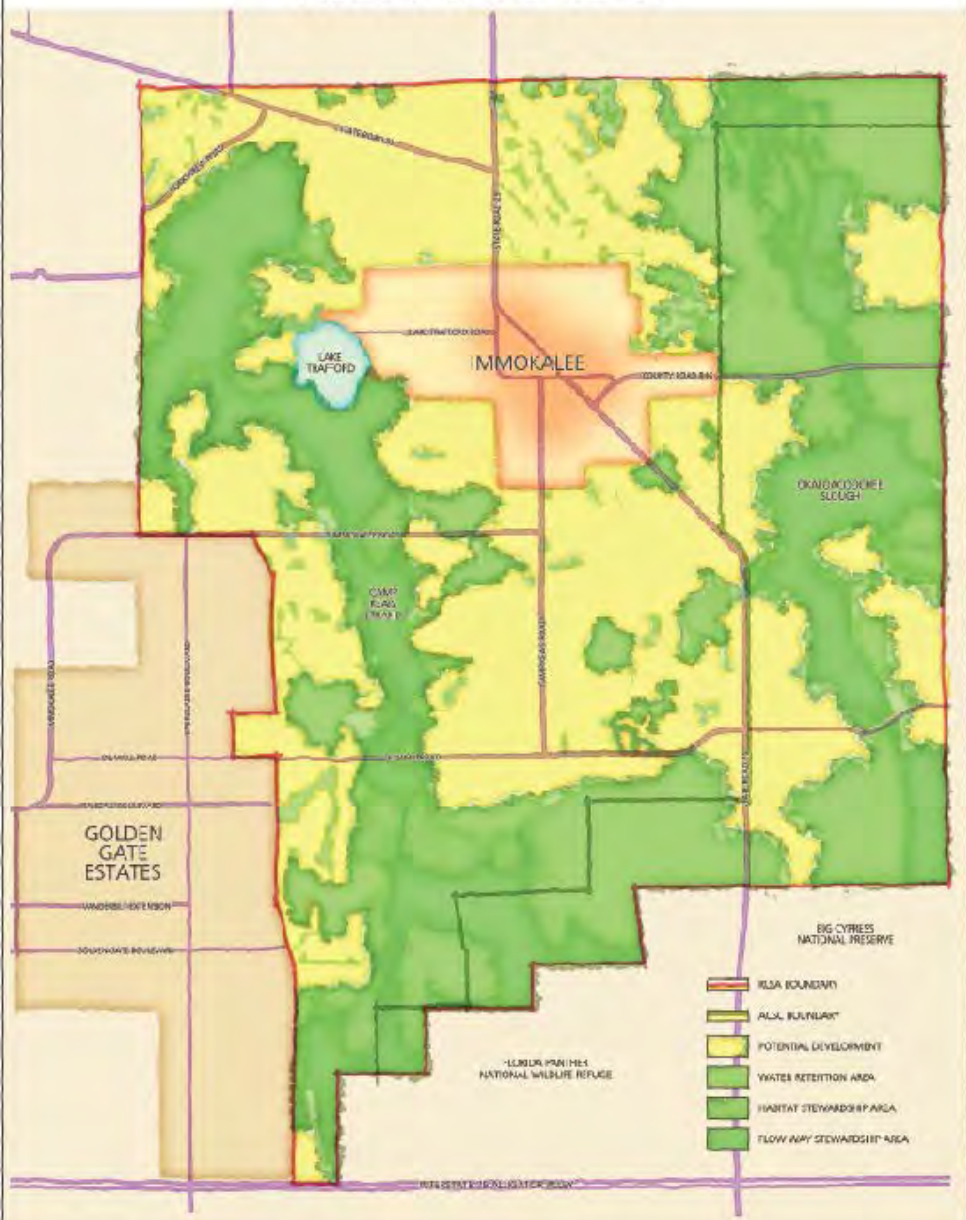
Protection of surface and groundwater



Growth Management Specialists

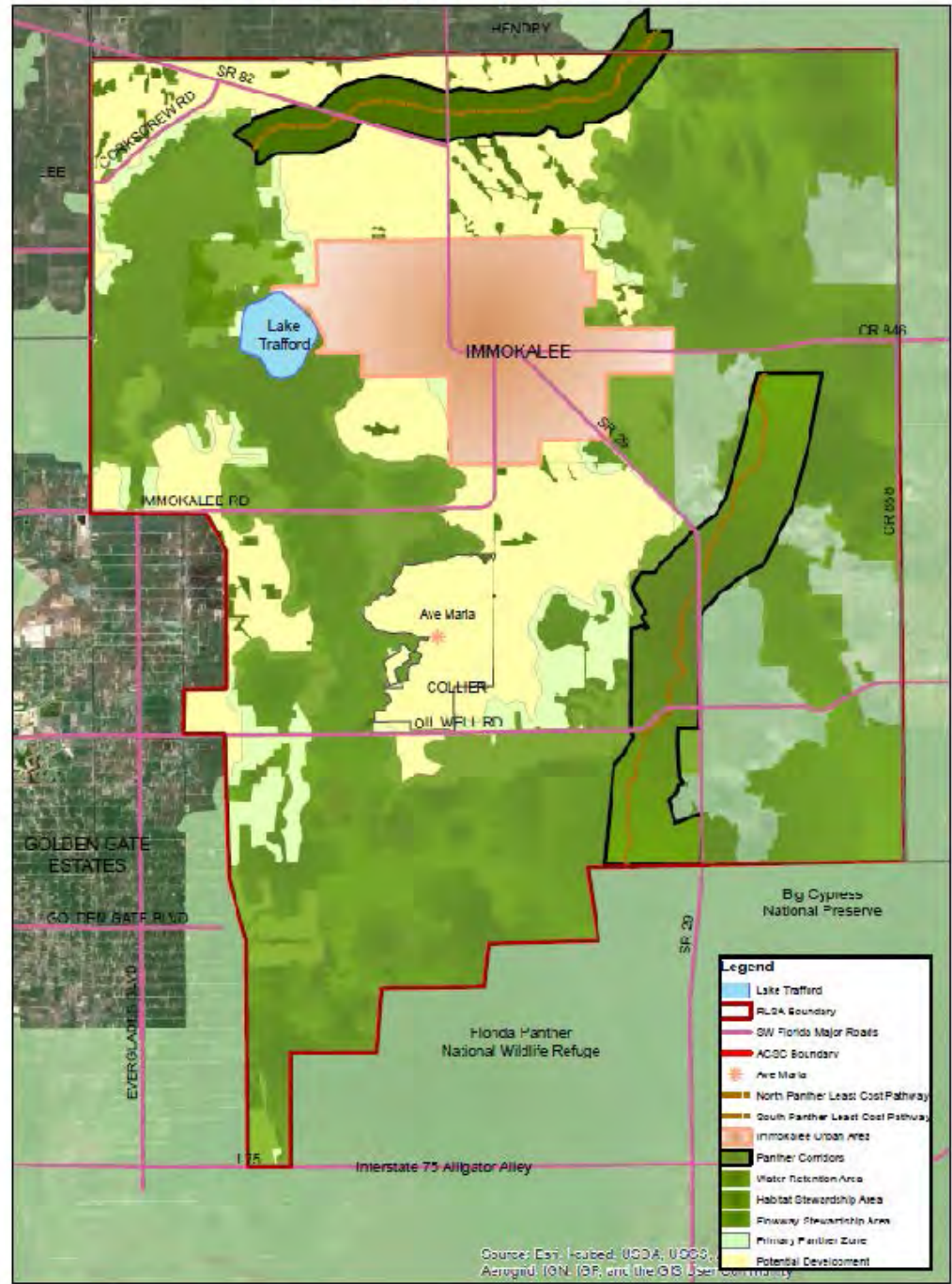


# RLSA OVERLAY



This RLSA Overlay plan was prepared solely for the purpose of presenting a general depiction of potential Stewardship Sensitive Areas, potential development areas, and other features based on the adopted RLSA Overlay. The RLSA is a voluntary, incentive based program, and the specific features shown on this plan are not to be construed as part of the Future Land Use Map, shall not be used in a regulatory manner, nor shall it be construed to be a binding or definitive depiction of future SRAs or SSAs, which are subject to the designation and approval procedures set forth in the Collier County Growth Management Plan and Land Development Code. Areas shown as potential development may become SRAs, SSAs, or be developed in accordance with the underlying Rural/Agricultural zoning classification.

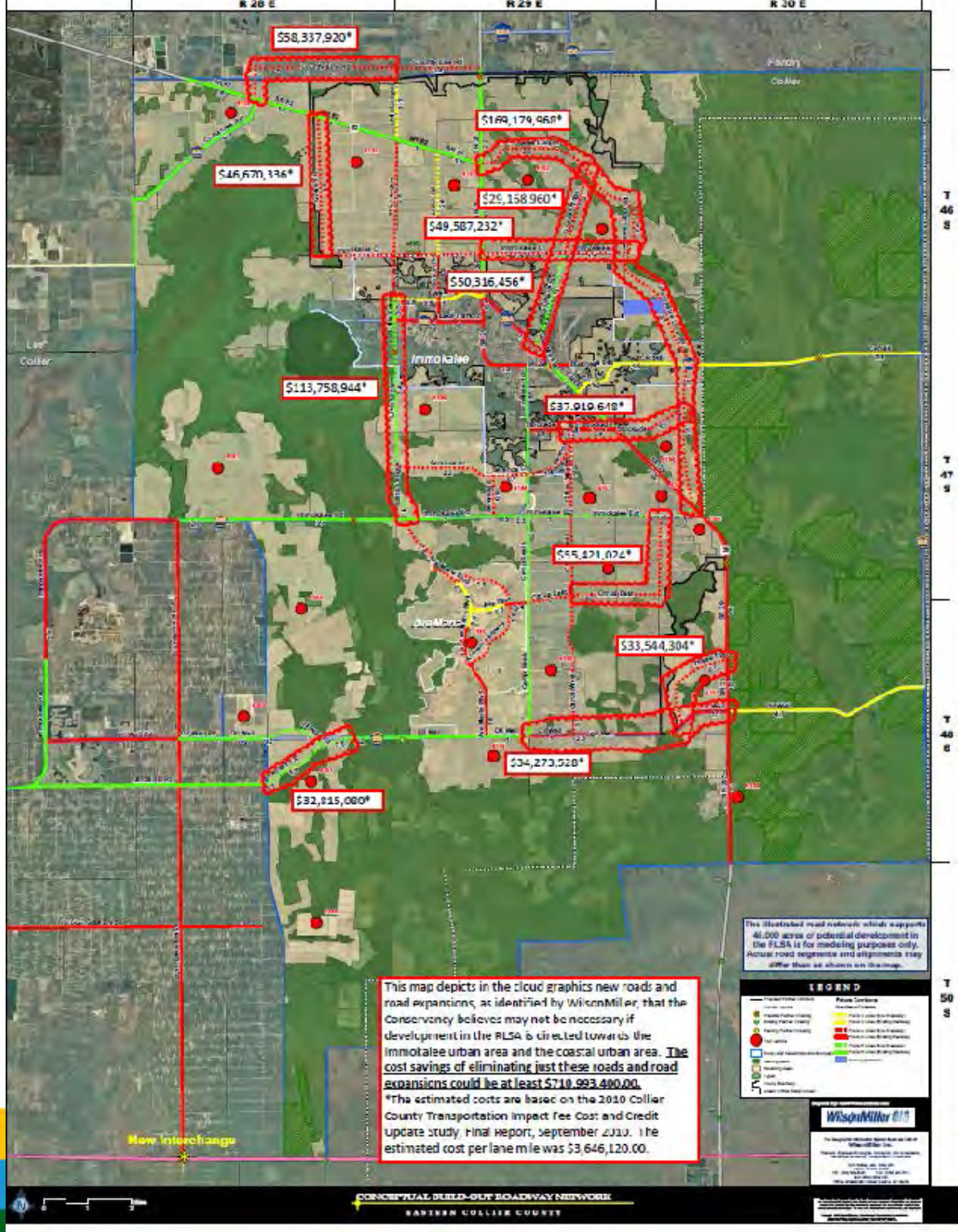
# Collier County 2050 RLSA CONCEPT PLAN Conservancy of Southwest Florida



- Legend**
- Lake Trafford
  - RLSA Boundary
  - SW Florida Major Roads
  - ACDC Boundary
  - Ave Maria
  - North Panther Least Cost Pathway
  - South Panther Least Cost Pathway
  - Immokalee Urban Area
  - Panther Corridors
  - Water Retention Area
  - Habitat Stewardship Area
  - Flow Way Stewardship Area
  - Primary Panther Zone
  - Potential Development

Source: Esri, Imaged, USDA, USGS, Aerial, IGN, (B), and the GIS User Community





The cost savings of eliminating the proposed roads could be at least \$710,993,400.





# How we work with The Village of Estero

1. Collaboration
2. Provide research & educate
3. Provide technical data and analysis
4. Serve on committees



# Questions?

[AprilO@Conservancy.org](mailto:AprilO@Conservancy.org)

1495 Smith Preserve Way

Naples, FL 34119

(239) 430-2467

[www.Conservancy.Org](http://www.Conservancy.Org)

