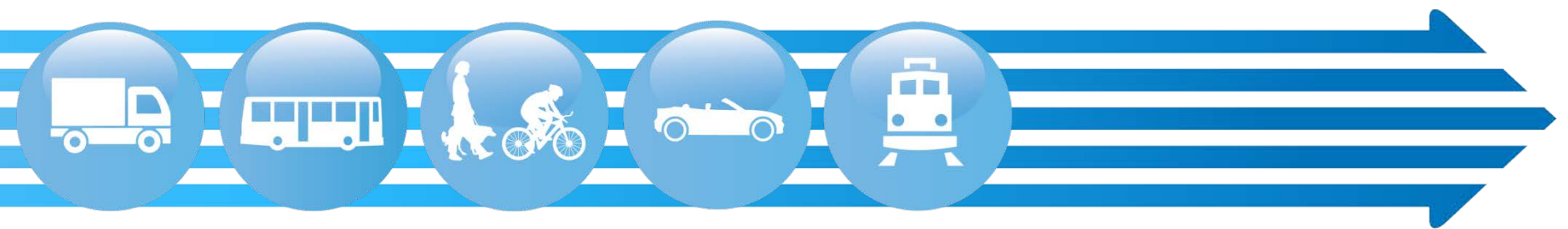


Estero Village Council November 13th



C.R. 951 Project Development & Environment Study

Project Alternatives - Concept Development

Preliminary, Subject to Change

Data Source : Lee County Property Appraiser

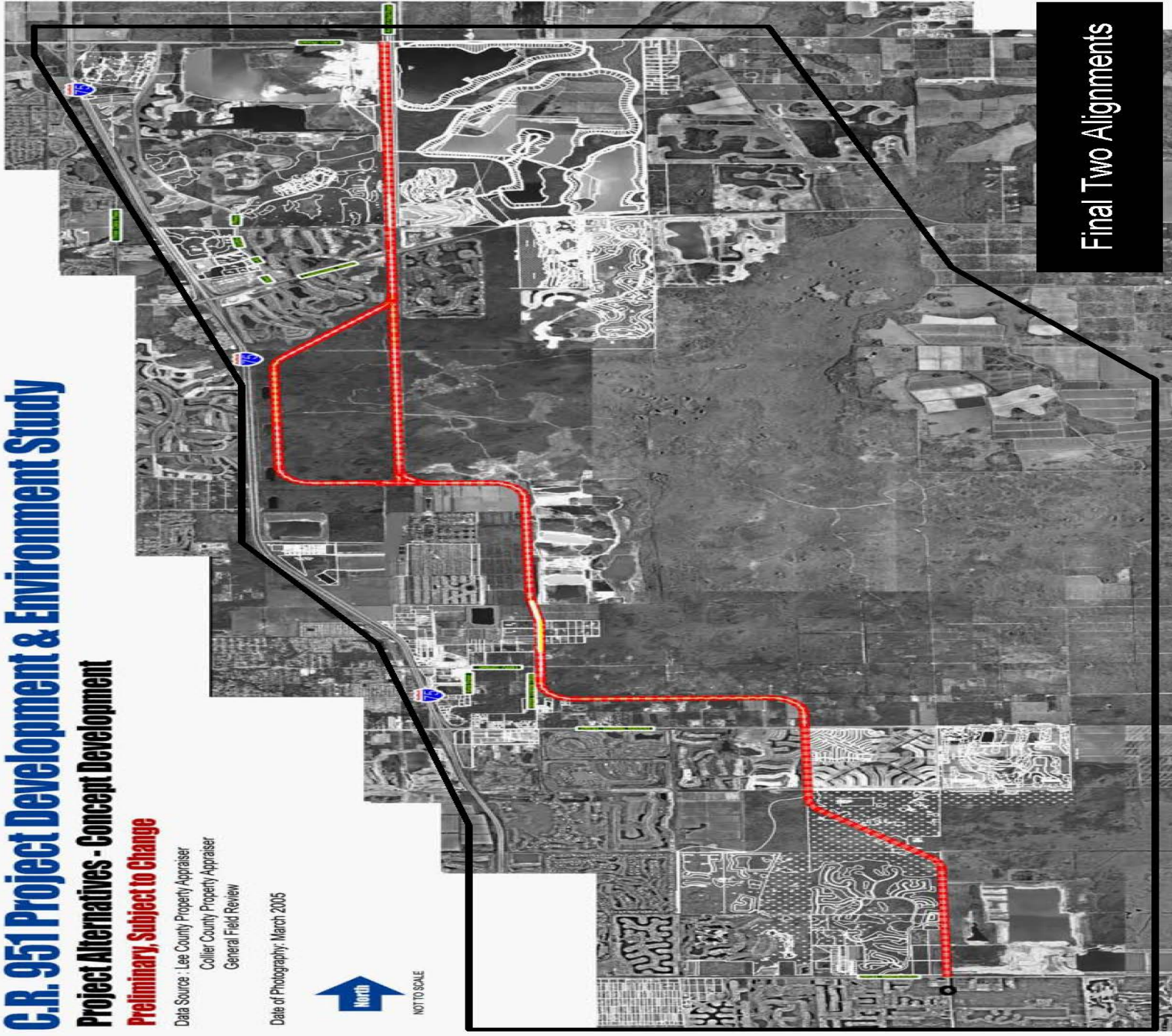
Collier County Property Appraiser

General Field Review

Date of Photography: March 2005

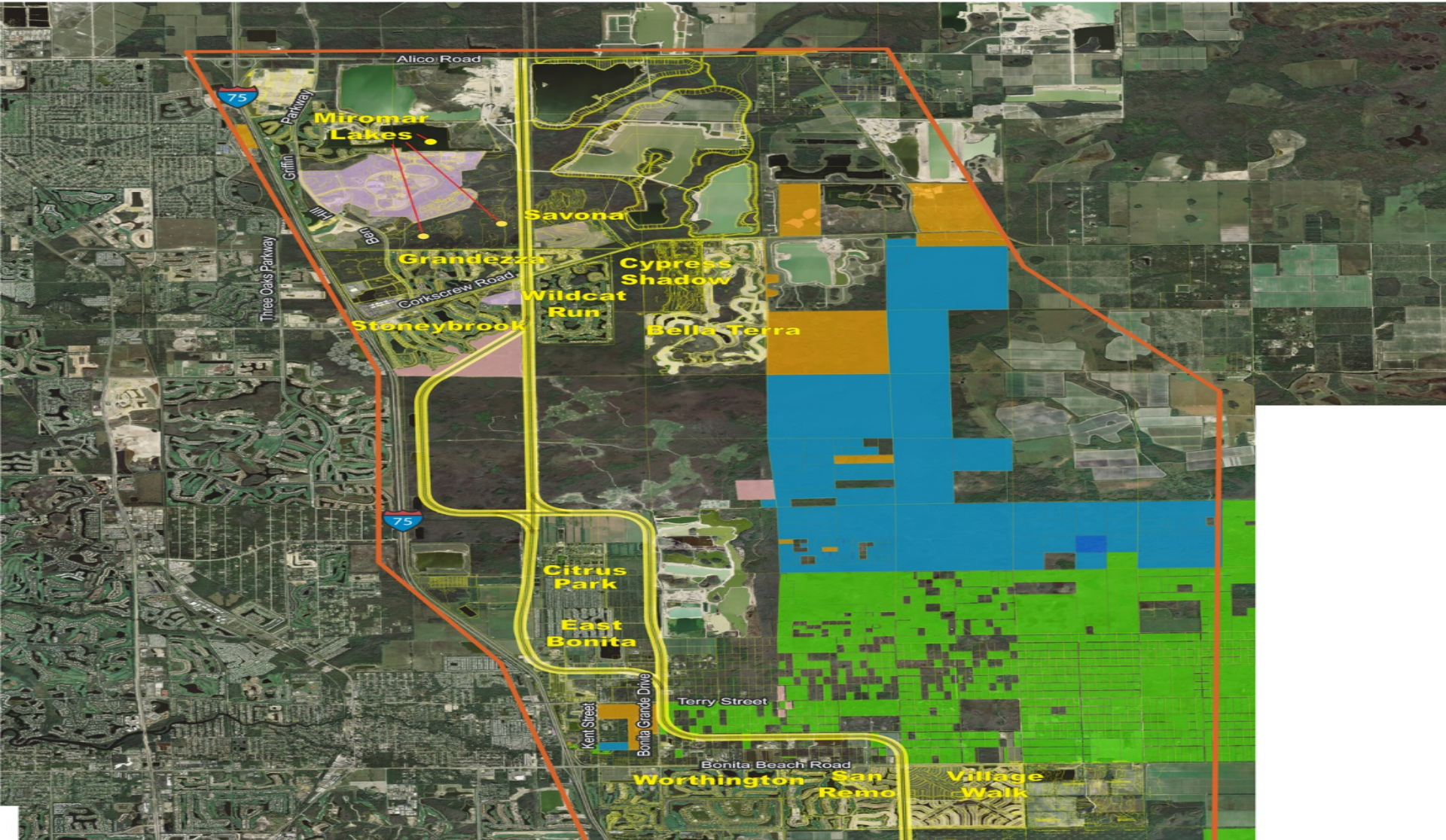


NOT TO SCALE



Final Two Alignments

CR 951 PD&E Study – From Immokalee Road to Alico Road



**C.R. 951
Project Development & Environment Study**



LEGEND

- Study Boundary
- Critical CREW Lands
- SFWMD Lands
- State of FL Lands
- Lee County Lands
- Lee County Conservation Easement
- Collier County Lands





2264 R

2284 R

1910 H

1910 R






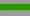


1910 R

CREW BOUNDARY

1600 R

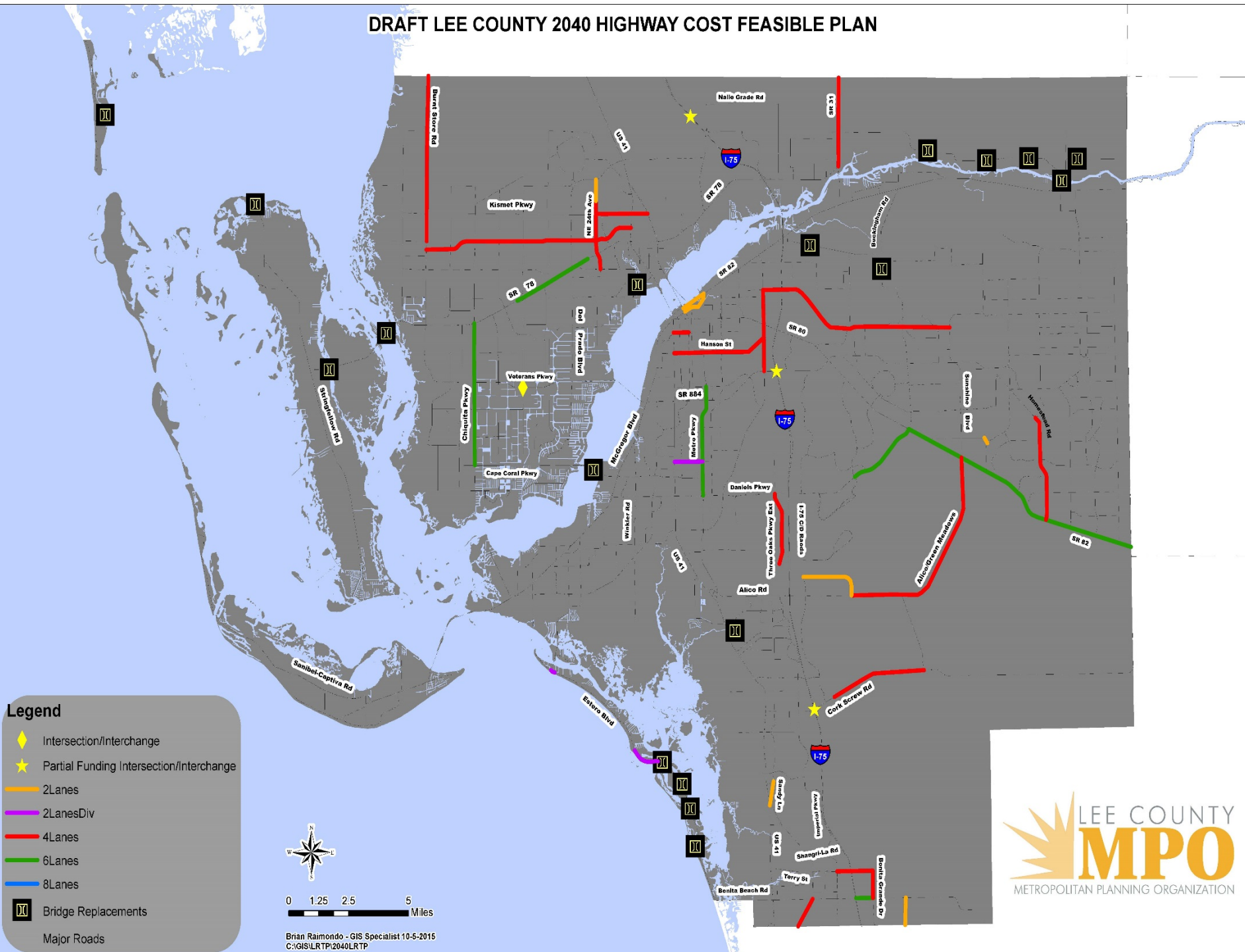
DRAFT LEE COUNTY 2040 HIGHWAY COST FEASIBLE PLAN

Legend

-  Intersection/Interchange
-  Partial Funding Intersection/Interchange
-  2Lanes
-  2LanesDiv
-  4Lanes
-  6Lanes
-  8Lanes
-  Bridge Replacements
- Major Roads



Brian Raimondo - GIS Specialist 10-6-2015
 C:\GIS\LRTP\2040LRTP



CR 951 Extension Status



- Portion from Immokalee Road to Bonita Beach Road – Collier 2040 Needs Plan (Logan section in CIP)
- Portion from Bonita Beach Road to Corkscrew road – Not included in 2040 Plan
- Portion from Corkscrew Road to Alico Road – On 2040 Needs Plan project list (need/timing studied as part of Area Traffic Study starting soon)



*Questions
or
comments?*