



Estero Town Commons

Retail Parking Expansion



Existing Aerial View



LEGEND

Revision	Date	Description

DESIGNED BY:	DM
DRAWN BY:	DM
APPROVED:	DM
JOB CODE:	
DATE:	
SCALE:	
BY:	

GradyMinor
 Civil Engineers • Land Surveyors • Planners • Landscape Architects
 3000 Via Del Rey, Bonita Springs, Florida 34134
 Phone: 239.600.4300
 Fax: 239.600.4301
 Website: www.GradyMinor.com

ESTERO TOWN CENTER
AERIAL PHOTOGRAPH
 ELEVATIONS SHOWN HEREON ARE BASED UPON NORTH AMERICAN VERTICAL DATUM 1988 (NAVD 88)
 CONVERSION FACTOR TO NATIONAL GEODETIC VERTICAL DATUM 1989 (NGVD 89) IS 1.115

MUNICIPALITY:	
COUNTY:	
REC'D/ISSUED/ANG:	
DATE:	
REVISIONS:	
CONCEPTUAL:	
SHEET	1 OF 1

© 2015 GradyMinor, Inc. All rights reserved. 10/15/2015 10:05 AM

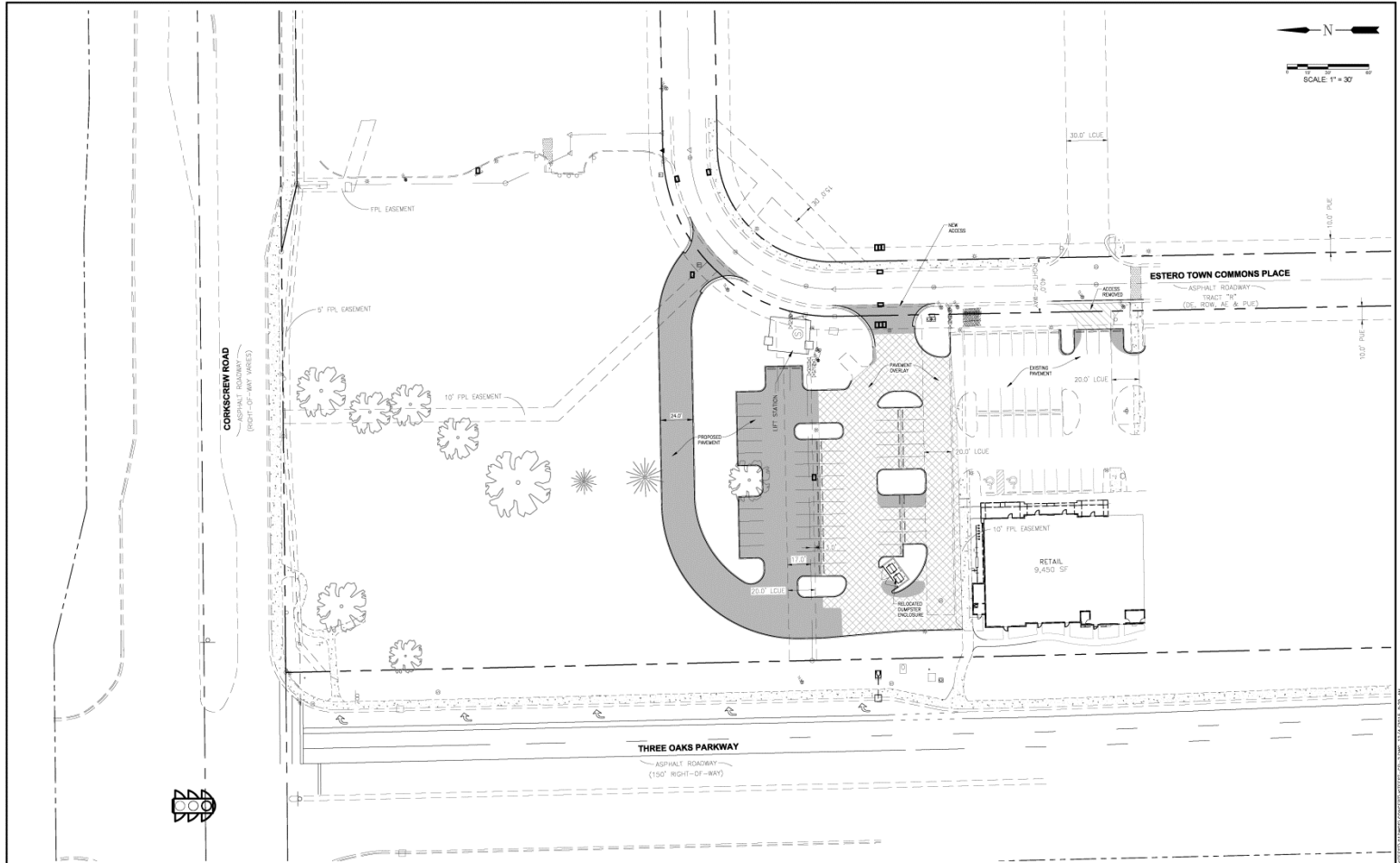
Existing Conditions



Existing Conditions Cont.



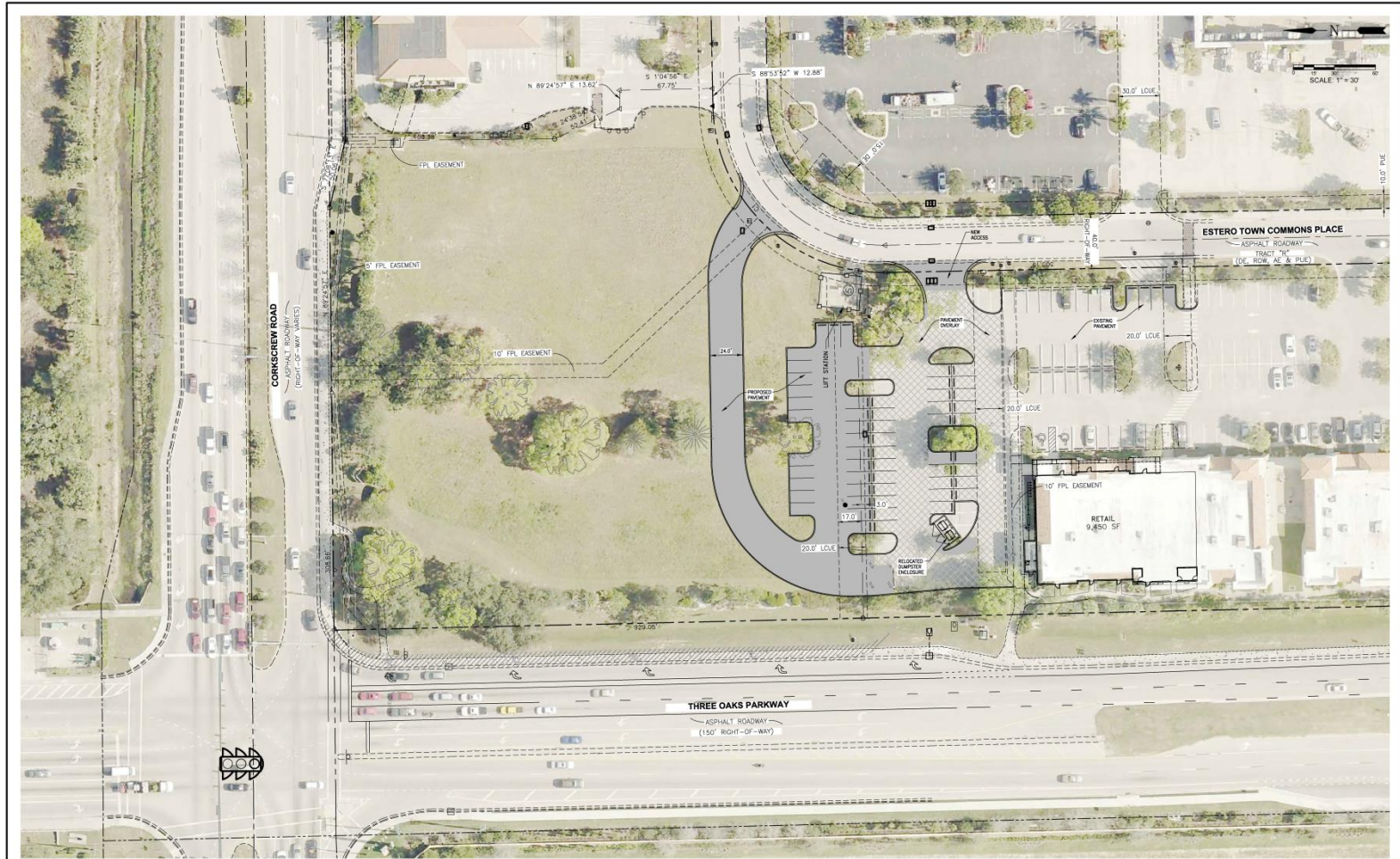
Proposed Parking Expansion



<p>LEGEND</p>			<p>DESIGNED BY: D.S.A.</p> <p>DRAWN BY: D.S.A.</p> <p>APPROVED: D.S.A.</p> <p>JOB CODE: K1033P</p> <p>SCALE: 1" = 30'</p>	<p>GradyMinor</p> <p>Civil Engineers • Land Surveyors • Planners • Landscape Architects</p> <p>1000 N. US HWY 1 Brenta Springs, Florida 34714</p> <p>Phone: 888.239.6900 www.GradyMinor.com</p>	<p>G. Grady Minor and Associates, P.A. 3800 Via Del Rey Brenta Springs, Florida 34714</p> <p>REGISTERED PROFESSIONAL ENGINEER No. 123456789</p>	<p>ESTERO TOWN CENTER</p> <p>RETAIL PARKING EXPANSION OUTPARCEL SITE PLAN DECEMBER, 2015</p> <p>ELEVATIONS SHOWN HEREON ARE BASED UPON NORTH AMERICAN VERTICAL DATUM 1988 (NAD 83). CONVERSION FACTOR TO NATIONAL GEODETIC VERTICAL DATUM 1983 (NGVD 83): 1.1553208</p>	<p>MUNICIPALITY: LEE COUNTY</p> <p>DISTRICT: 10</p> <p>DATE: DECEMBER, 2015</p> <p>PREPARED BY: D.S.A.</p> <p>CHECKED BY: D.S.A.</p> <p>DATE: DECEMBER, 2015</p> <p>SCALE: 1" = 30'</p>
Revision	Date	Description	BY				

CONKSCREW ROAD (150' RIGHT-OF-WAY) | THREE OAKS PARKWAY (150' RIGHT-OF-WAY) | ESTERO TOWN COMMONS PLACE (ASPHALT ROADWAY) | TRACT 14 (DE. ROW. AC. & PUF) | SCALE: 1" = 30'

Proposed w/ Aerial Overlay



LEGEND			DESIGNED BY: <i>DM</i> DRAWN BY: <i>DM</i> APPROVED: <i>DM</i> JOB CODE: <i>DM</i> SCALE: <i>DM</i> BY:		GradyMinor Civil Engineers • Land Surveyors • Planners • Landscape Architects 3000 Via Del Sol Boca Raton, Florida 33434 Phone: 561-991-1111 www.GradyMinor.com		ESTERO TOWN CENTER CONCEPTUAL OUTPARCEL SITE PLAN WITH AERIAL PHOTOGRAPH		MUNICIPALITY: <i>DM</i> FILE COUNTY: <i>DM</i> SPEC. PERMITS/ORD: <i>DM</i> DATE: <i>DM</i> SUBMITTER TYPE: <i>DM</i> CONCEPTUAL	
Revision	Date	Description	0. Grady Minor and Associates, P.A. 3000 Via Del Sol Boca Raton, Florida 33434 Business Lic. 200800266 Fort Myers: 239.600.4300		ELEVATIONS SHOWN HEREON ARE BASED UPON NORTH AMERICAN VERTICAL DATUM 1988 (NAVD 88) CONVERSION FACTOR TO NATIONAL GEODESIC VERTICAL DATUM 1988 (NGVD 88) IS 14.15000		S. BECK & ASSOCIATES, P.C. FLORIDA P.E. LICENSE NO. 70811		SHEET 1 OF 1	

C:\Documents\2015\ESTERO TOWN COMMONS\CONCEPTUAL\ESTERO TOWN COMMONS - 10/16/2015 - 11:03 AM

Building and Buffer Planting

Proposed Revisions

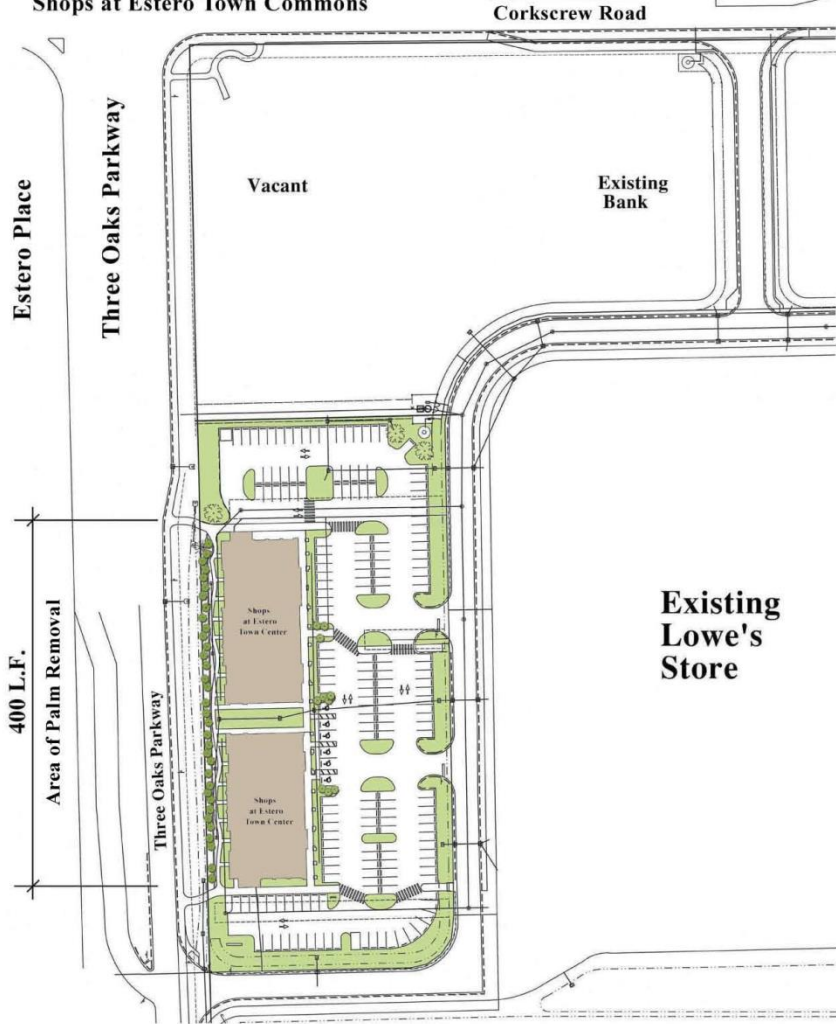
A series of decorative horizontal lines on the right side of the slide. It starts with a thick teal line, followed by a thin white line, and then three thin teal lines stacked vertically.



24 Existing Cabbage Palms to be removed

Existing Conditions Exhibit

Shops at Estero Town Commons



GradyMinor
 Civil Engineers
 Landscape Architects
 Land Surveyors
 Planners
 South Springs 239.947.1144
 Fort Myers 239.696.0200
 North Fort 814.430.5050
 Naples 339.444.2267
 www.GradyMinor.com
 David Kent Carlyle ASLA

License No. 1517



KITE Shops at Estero Town Commons
 LANDSCAPE PLAN
 LEE COUNTY, FLORIDA

DESCRIPTION

Shops at Estero Town Commons

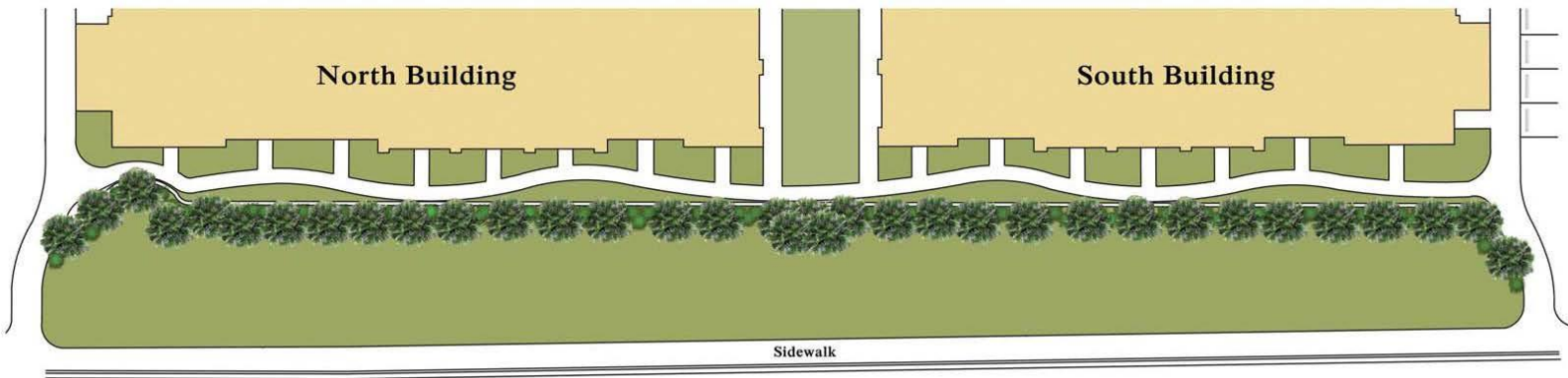
Existing Landscape Conditions

12/4/15



North Building Elevation

South Building Elevation



Three Oaks Parkway

Shops at Estero Town Commons

Proposed Landscape Improvements

12/4/15



North Building Elevation

18 Proposed Sabal Palm

South Building Elevation



North Building

South Building

18 Proposed Sabal Palm

Sidewalk

Three Oaks Parkway