

**A presentation for an  
Environmental Education Center  
for Lovers Key State Park,  
Bonita Springs, Florida**















**2014 Park attendance  
was 974, 431,  
Florida's second most  
visited State Park**



**2.5 Miles of Beach**



# 8 Miles of Nature Trails



# **2014 Park Revenues**

**\$682, 293**















**2014 Park  
200 Volunteers  
14,000 hours**





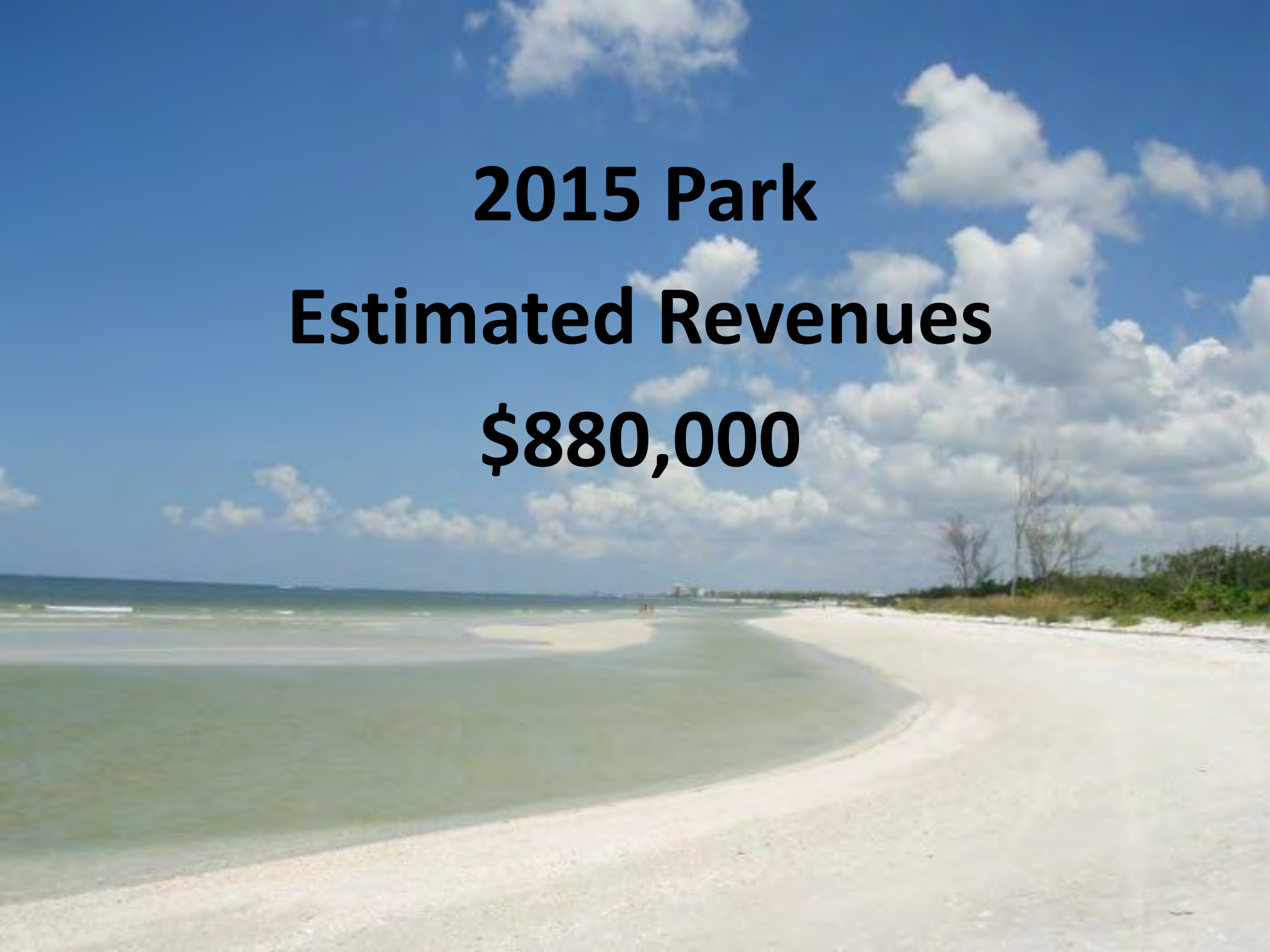


**In 2014 the Park Generated  
750 Full Time Regional Jobs**









**2015 Park  
Estimated Revenues  
\$880,000**







**2015 Park  
Full Time Staff  
10**



**2014 Park  
Economic Impact  
\$72, 600,000**















**The 3600 s.f. LEED Certified building and its state of the art exhibits will be owned by the Park Service and staffed by volunteers. A much needed indoor facility; it will inspire students, visitors and the community to learn the importance of stewardship of our barrier island environment.**





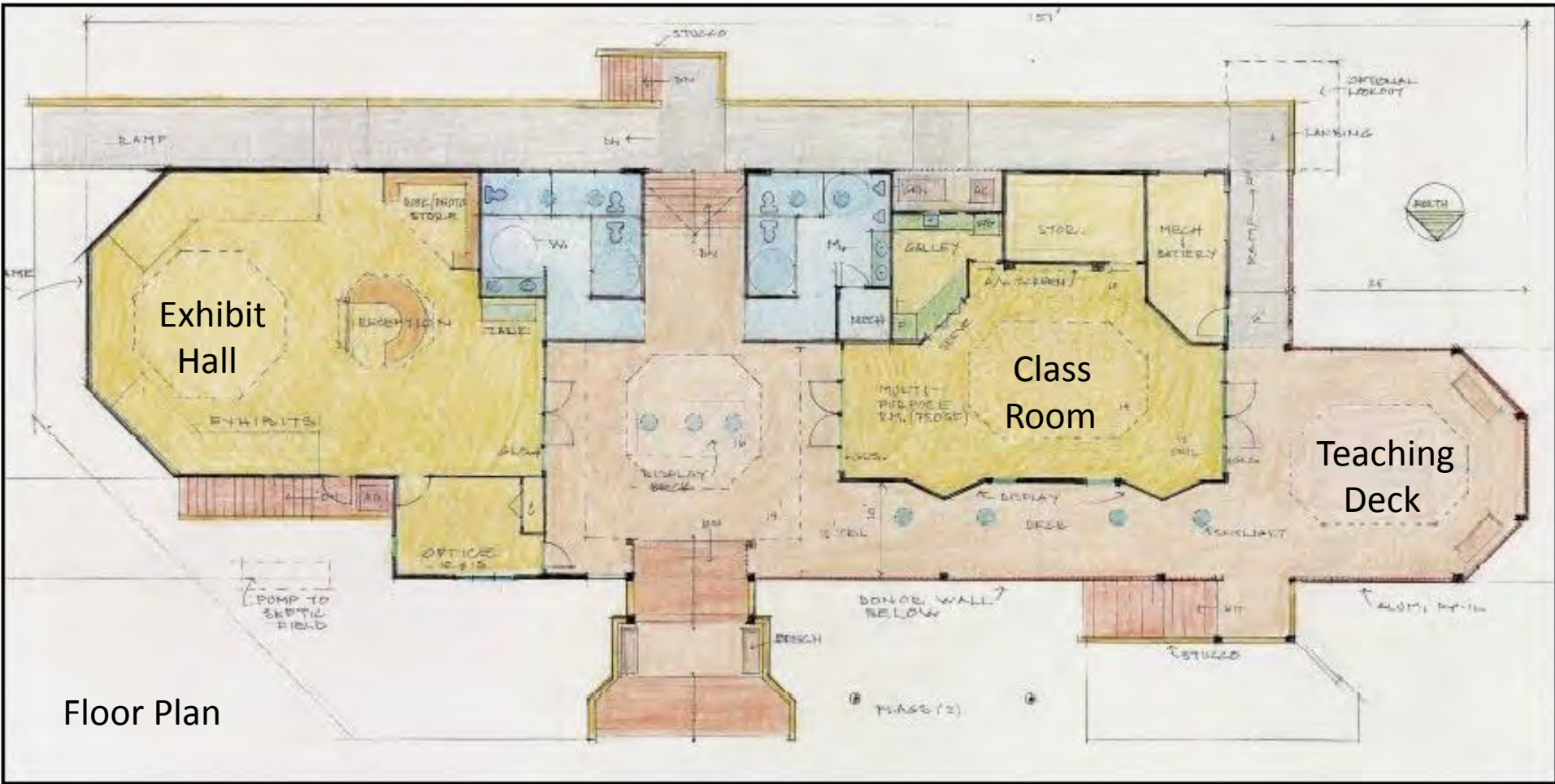


*Front Elevation*



*Rear Elevation*

*Lovers Key Environmental Education Center*



Floor Plan



