



Dunkin

Donuts/Valvoline

20290 GRANDE OAK SHOPPES BOULEVARD

# Project Location



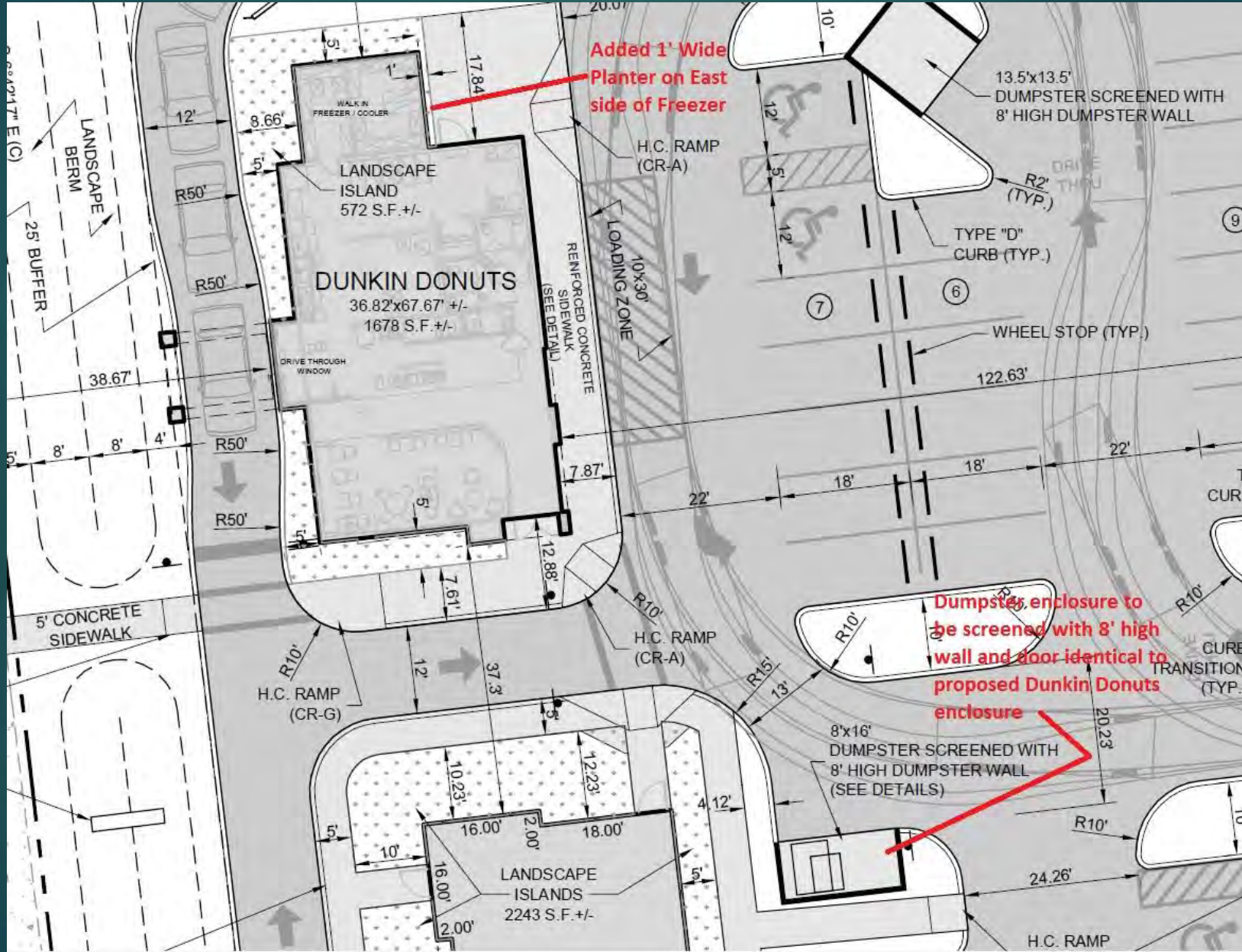
# Project Aerial



# Site Plan Changes per DRB Conditions of Approval

- ▶ Added 1' Wide Planter to East Side of Dunkin Donuts Freezer to provide additional landscape screening
- ▶ Added note for Valvoline Dumpster to be screened with an 8' high enclosure (will include door and will be identical in design to Dunkin Donuts Dumpster Enclosure)

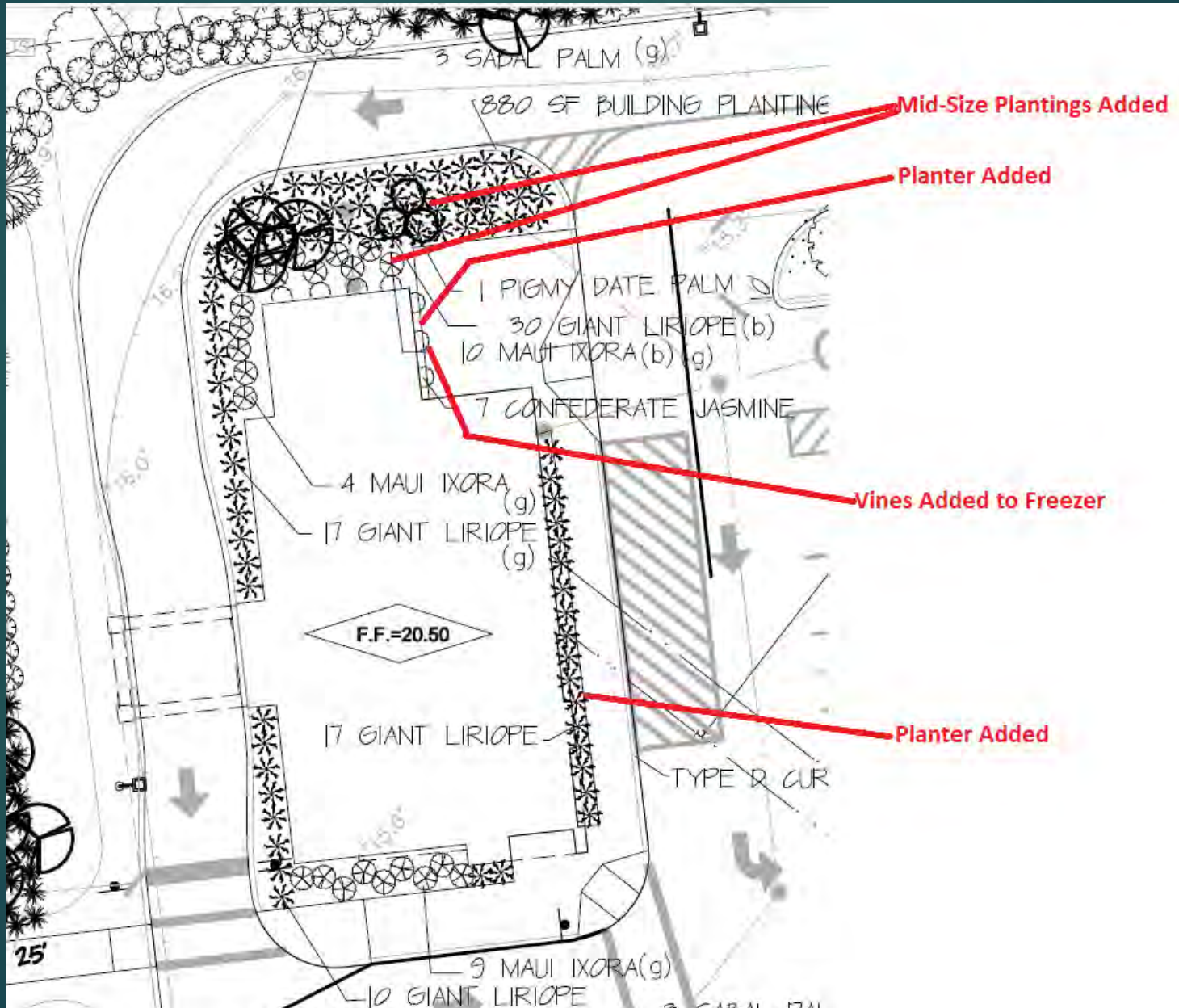
# Site Plan



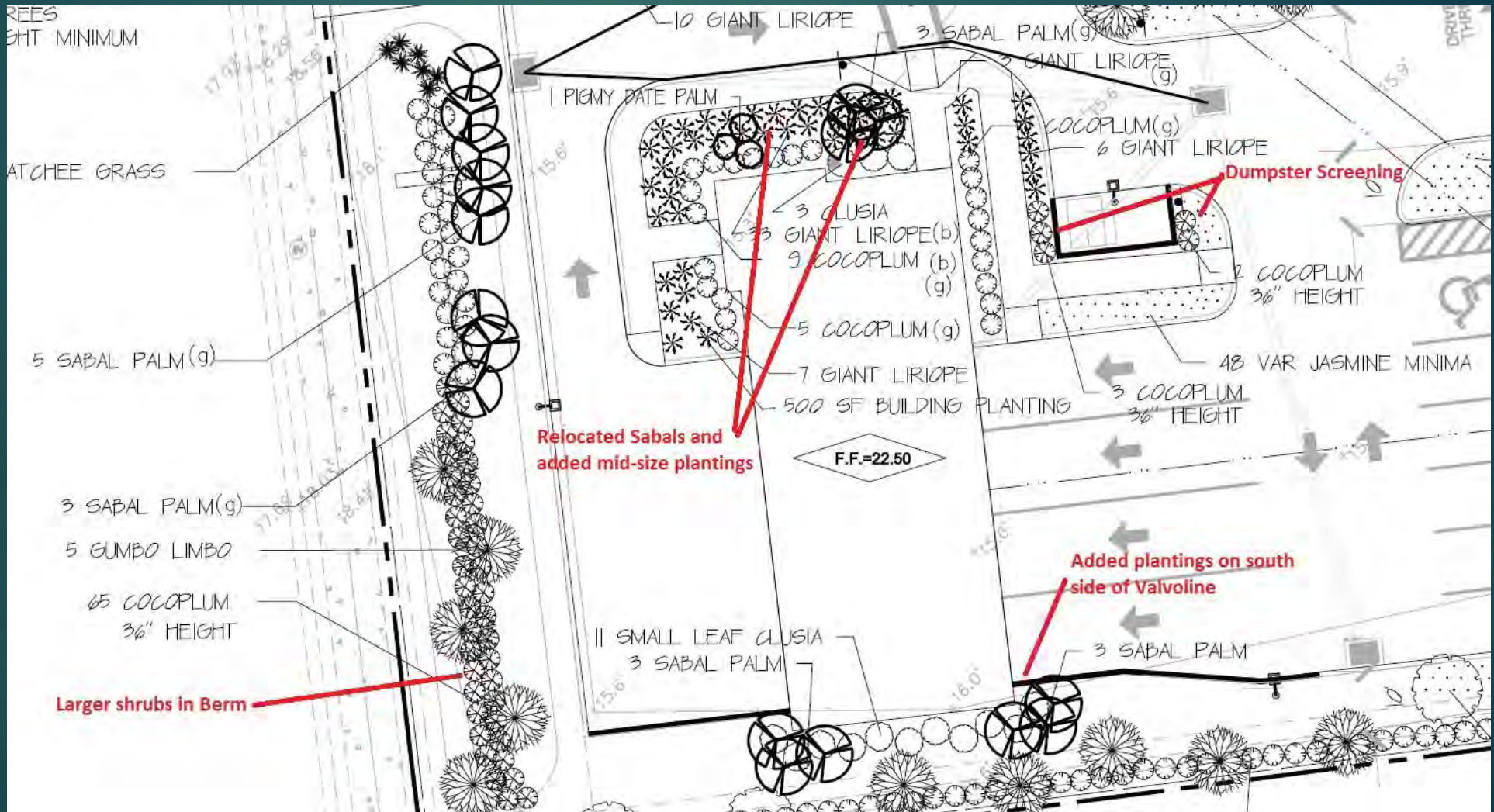
# Landscape Plan Changes per DRB Conditions of Approval

- ▶ Added Vines on Dunkin Donuts Freezer
- ▶ Added mid-sized plantings in area adjacent to freezer
- ▶ Added more large size shrubs to the berm adjacent to Valvoline. Moved the shrubs towards the top of the berm.
- ▶ Planter added on east side of Dunkin Donuts building to provide building buffer between building and parking/sidewalk
- ▶ Added plantings on the south side of Valvoline
- ▶ Added screening to the dumpster by Valvoline
- ▶ Moved the Sabal Palms on the north side of Valvoline and added mid size planting in the planting bed.

# Landscape Plan



# Landscape Plan





# Dunkin Elevation Changes per DRB Conditions of Approval

- ▶ Add corbels on tower elements (1)
- ▶ Extend height of awnings on all windows (2)
- ▶ Freezer to have stucco finish and painted to match building (3)
- ▶ Storefront aluminum to be anodized bronze color (4)
- ▶ Provide screen wall at west side of freezer (5)
- ▶ Note added stating that signage will be a separate permit (6)
- ▶ Dumpster Enclosure to be painted to match building (7)

# Dunkin Elevations

**1 FRONT ELEVATION**

**2 LEFT ELEVATION**

**3 not used**

**4**

**EXTERIOR FINISH MATERIAL SCHEDULE**

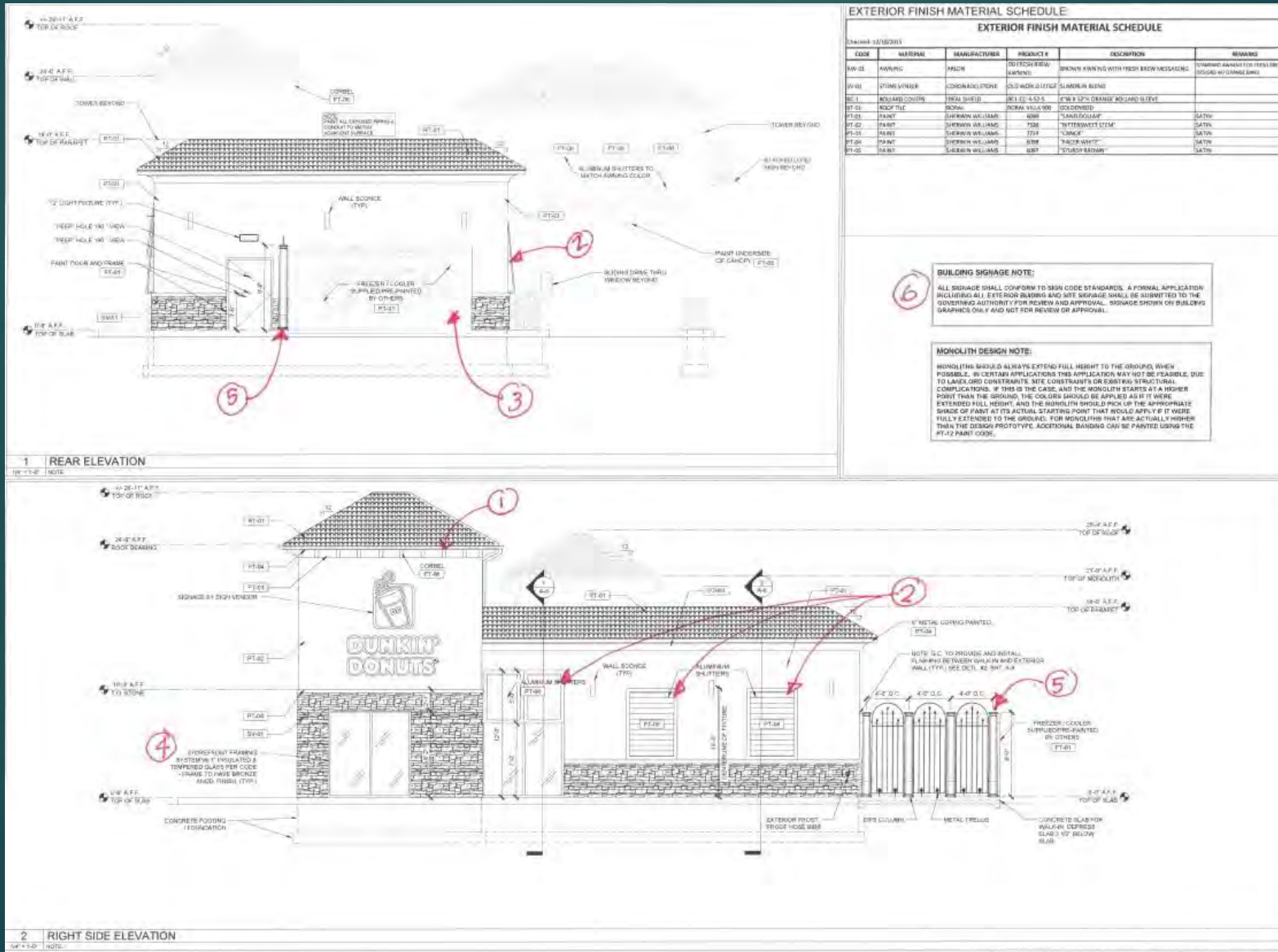
Checked: L/S/A/DC

CODE	MATERIAL	MANUFACTURER	PRODUCT #	DESCRIPTION	REMARKS
AW-01	AWNING	ALUSO	301 FRESHWAVE AWNING	BROWN AWNING WITH FRESH-BROWN MESSAGE	STANDARD HORIZONTAL FINISH PER PHOTO ON VERTICAL SIGN
SC-01	STONE VENEER	CONCRETE SOLUTIONS	CS-3 WARDEN HOUSE	SPARKLE FINISH	
BC-1	SHALARD COVER	CELANO SHARD	BC-12-4-2-A	4" W x 12" SHALARD SHALARD 2.500"	
RT-01	ROOF TILE	ROMAL	ROMAL 10-10-10	GLAZED	
PT-01	PAINT	SHORAN WILLIAMS	9006	"SAND DUST" PT	5017N
PT-02	PAINT	SHORAN WILLIAMS	9008	"BETTERMENT STMP"	5018N
PT-03	PAINT	SHORAN WILLIAMS	7724	"SCANDY"	5019N
PT-04	PAINT	SHORAN WILLIAMS	8008	"FOOT WHITE"	5020N
PT-05	PAINT	SHORAN WILLIAMS	8002	"TUSCAN BRICK"	5021N
PT-06	PAINT	SHORAN WILLIAMS	7284	"THURMIST"	5022N

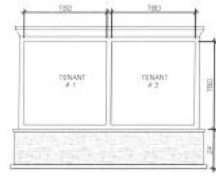
**BUILDING SIGNAGE NOTE:**  
 ALL SIGNAGE SHALL CONFORM TO SIGN CODE STANDARDS. A FORMAL APPLICATION INCLUDING ALL EXTERIOR BUILDING AND SITE SIGNAGE SHALL BE SUBMITTED TO THE GOVERNING AUTHORITY FOR REVIEW AND APPROVAL. SIGNAGE SHOWN ON BUILDING GRAPHICS ONLY AND NOT FOR REVIEW OR APPROVAL.

**MONOLITH DESIGN NOTE:**  
 MONOLITHS SHOULD ALWAYS EXTEND FULL HEIGHT TO THE GROUND, WHEN POSSIBLE. IN CERTAIN APPLICATIONS THIS APPLICATION MAY NOT BE FEASIBLE, DUE TO LANDLORD CONSTRAINTS, SITE CONSTRAINTS OR EXISTING STRUCTURAL COMPLICATIONS. IF THIS IS THE CASE, AND THE MONOLITH STARTS AT A HEIGHT FEWER THAN THE GROUND, THE COLORS SHOULD BE APPLIED AS IF IT WERE EXTENDED FULL HEIGHT, AND THE MONOLITH SHOULD PICK UP THE APPROPRIATE SHADE OF PAINT AT ITS ACTUAL STARTING POINT THAT WOULD APPLY IF IT WERE FULLY EXTENDED TO THE GROUND. FOR MONOLITHS THAT ARE ACTUALLY HIGHER THAN THE DESIGN PHOTO TYPE, ADDITIONAL SIGNAGE CAN BE PAINTED USING THE PT-02 PAINT CODE.

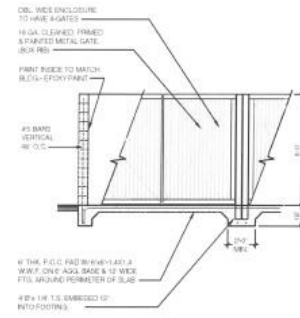
# Dunkin Elevations



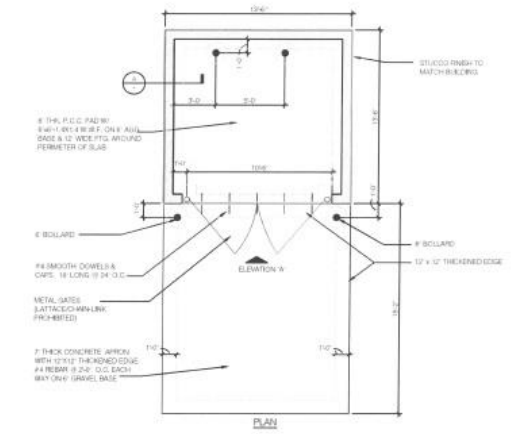
# Dunkin Dumpster



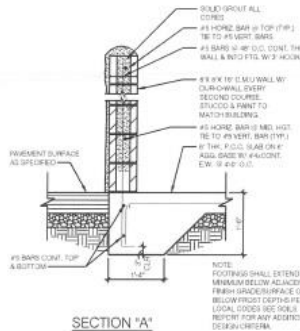
DUAL MONUMENT SIGN



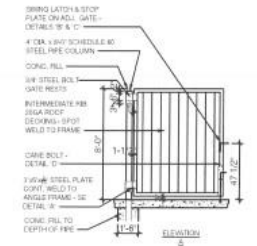
ELEVATION 'A'



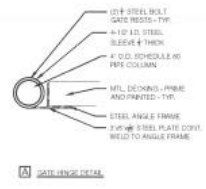
PLAN



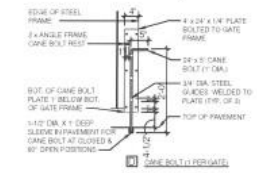
SECTION 'A'



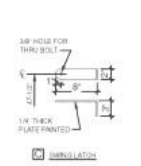
ELEVATION 'B'



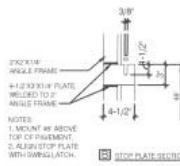
A GATE HINGE DETAIL



A GATE BOLT PERFORATE



B BOLLARD



C DEEP PLATE SECTION

10/20/2017

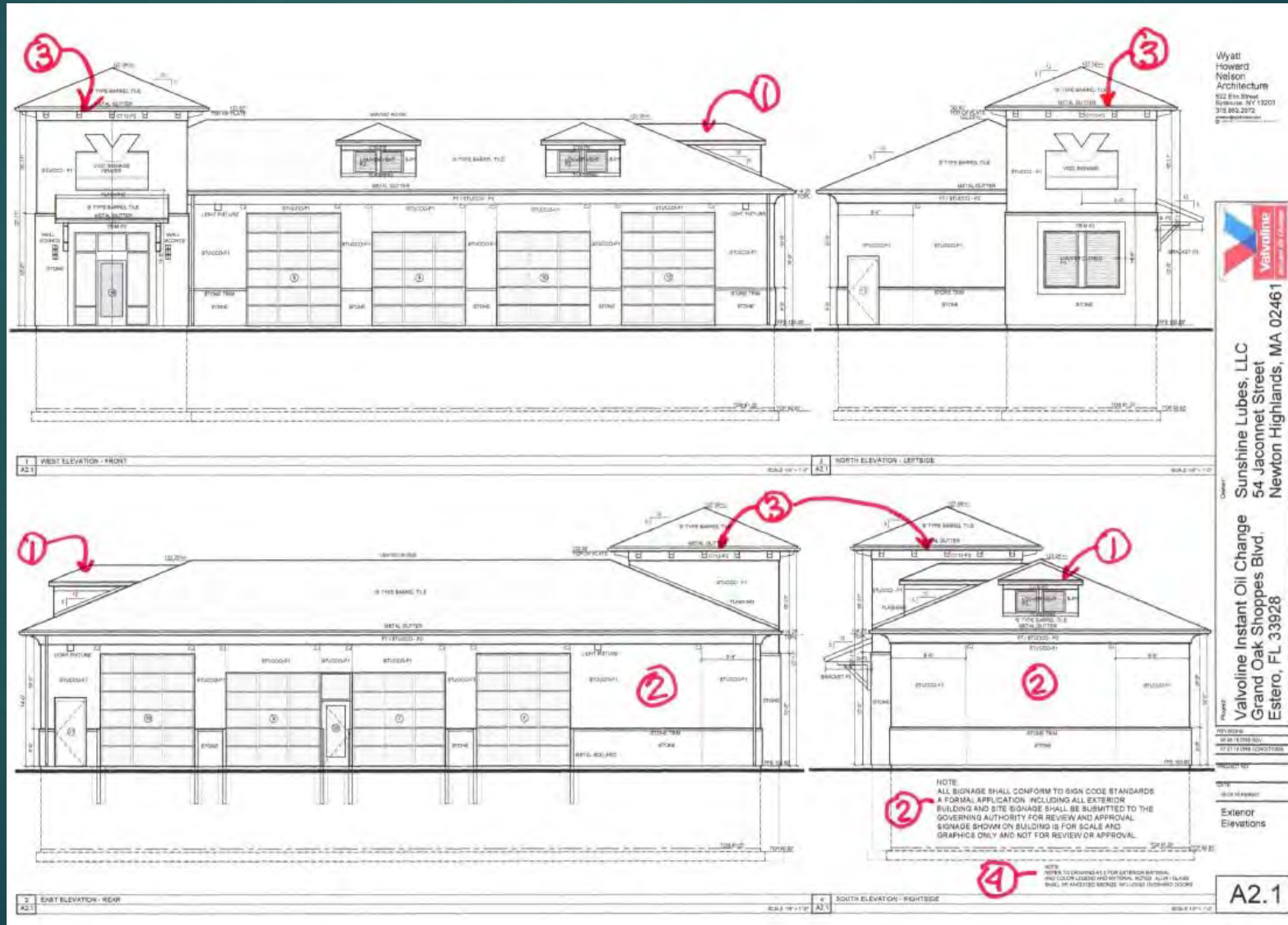
# Dunkin Color Elevation



# Valvoline Elevation Changes per DRB Conditions of Approval

- ▶ Added dormer to the south elevation (1)
- ▶ All VIOC brand signs removed with the exception of two faces of tower. Note added to plan A2.1 Elevation regarding signage that is shown on B/W elevations is to be permitted and approved separately (2)
- ▶ Additional corbels added to all 4 sides of tower (3)
- ▶ All aluminum, glass entries, storefront and overhead doors changed to anodized bronze color (4)
- ▶ Dumpster door shall match Dunkin Donuts dumpster door

# Valvoline Elevations



# Valvoline Color Rendering

