

Arcos Executive Center

Easement Vacation

Planning and Zoning – April 17th , 2018

PROJECT TEAM:

DEVELOPER:

LAI DESIGN ASSOCIATES, LLC
RICHARD S. LOSEE, PE

CIVIL ENGINEER:

J.R. EVANS ENGINEERING, P.A.
KRISTINA JOHNSON, P.E.

LAI CONSTRUCTION MANAGEMENT, INC.

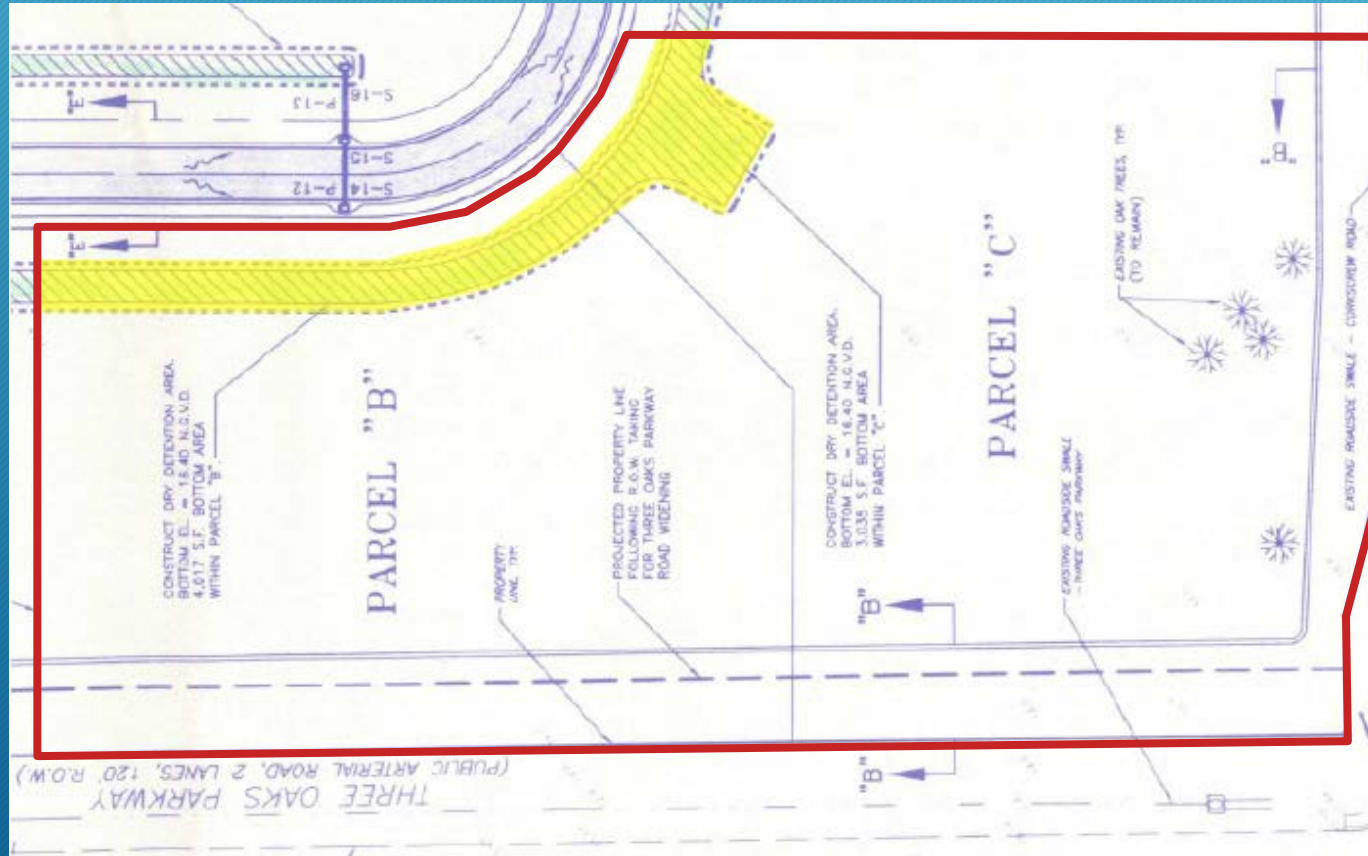
PROFESSIONAL PROPERTY DEVELOPERS

PROJECT LOCATION



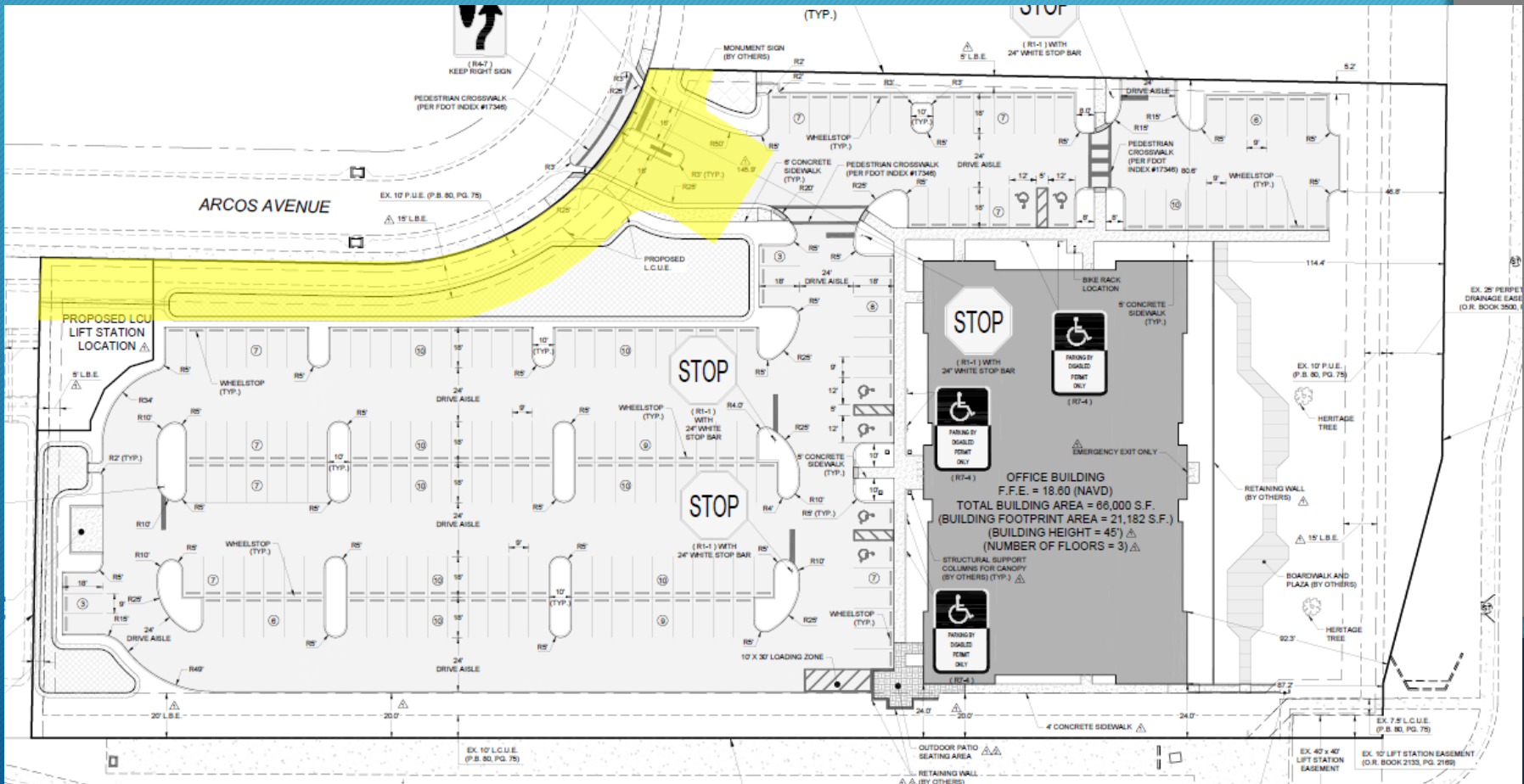
EXISTING DRAINAGE EASEMENT

- ▶ Existing drainage easement highlighted in yellow
 - ▶ Established prior to having a final site plan
 - ▶ Completely blocks the access to Arcos Avenue



PROPOSED SITE PLAN

- ▶ Existing drainage easement highlighted in yellow
 - ▶ Conflicts with proposed entrance to Arcos Avenue
 - ▶ Does not encompass the proposed Dry Detention Areas



PROPOSED DRY DETENTION AREAS

- ▶ Proposed Dry Detention areas highlighted in yellow

