

WORKSHOP ITEM SUMMARY SHEET
VILLAGE COUNCIL MEETING
December 5, 2018

Agenda Item:

Estero Parkway Update

Description:

After receiving direction on the lane widths, bike path widths and curbing, the project consultant has continued to work on the project's preliminary landscape design. This will help determine curb locations and provide a better budget estimate.

The consultant will provide a summary of the project's preliminary landscape design and provide an updated project cost estimate and project schedule.

Financial Impacts:

No financial impacts. The project consultant will provide an updated project budget.

Attachments:

1. Presentation
2. Project Cost Estimate

ATTACHMENT 1

BH &A

BRUCE HOWARD &
ASSOCIATES, INC.

Landscape Architects, Site Planners
& Golf Course Designers



ESTERO
PARKWAY

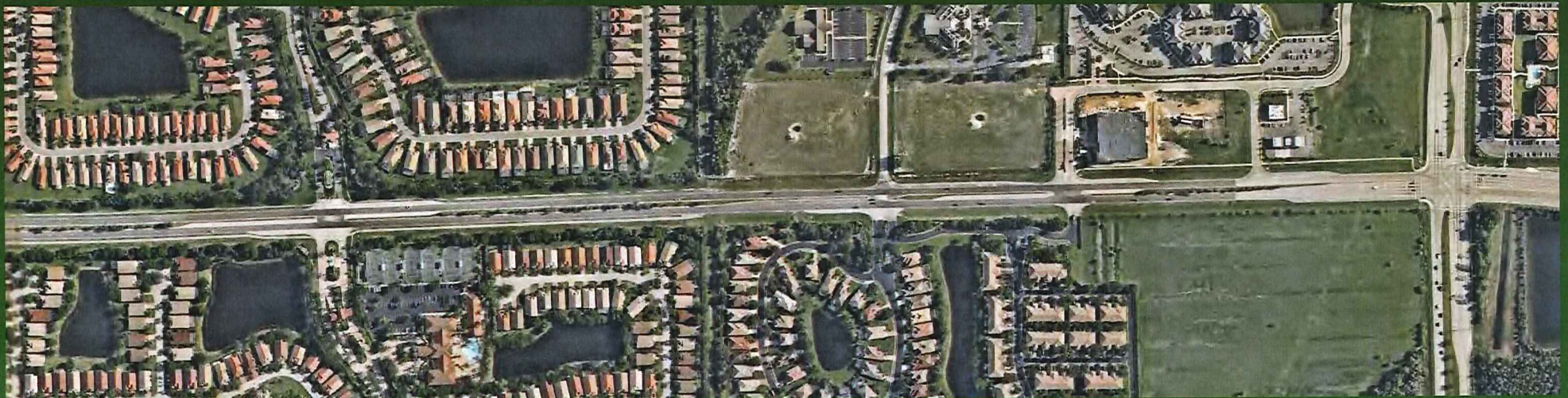
Village of Estero

Landscape Architectural
Design

Project Scope



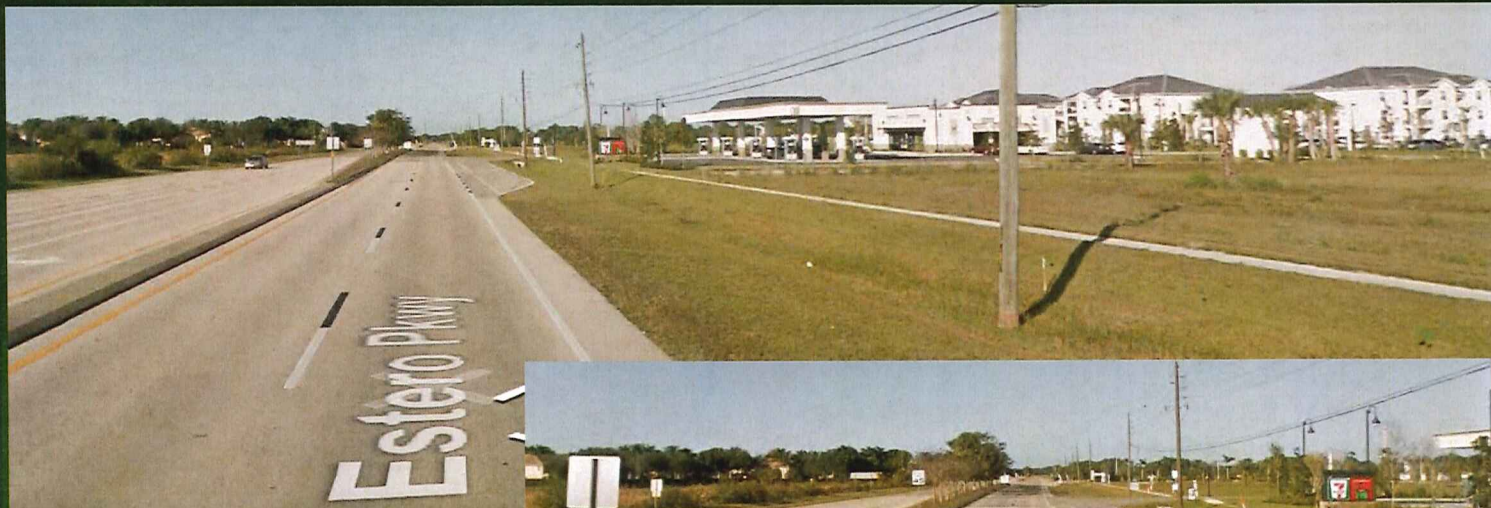
Eastern Portion of Road – Case Study Area



Street Views of Case Study Area



Entry from Three Oaks Pkwy shows total lack of landscaping and character.



Initial Northeast portion of ROW, strictly commercial with existing sidewalk and no vegetation.



Street Views of Case Study Area



Rookery Point – beginning of adjacent communities



End of above ground powerlines and beginning of community buffers and walls.

Street Views of Case Study Area

Reserve Entry



Existing communities have a much higher level of design.
Most employ large scale Date palms near their entries.



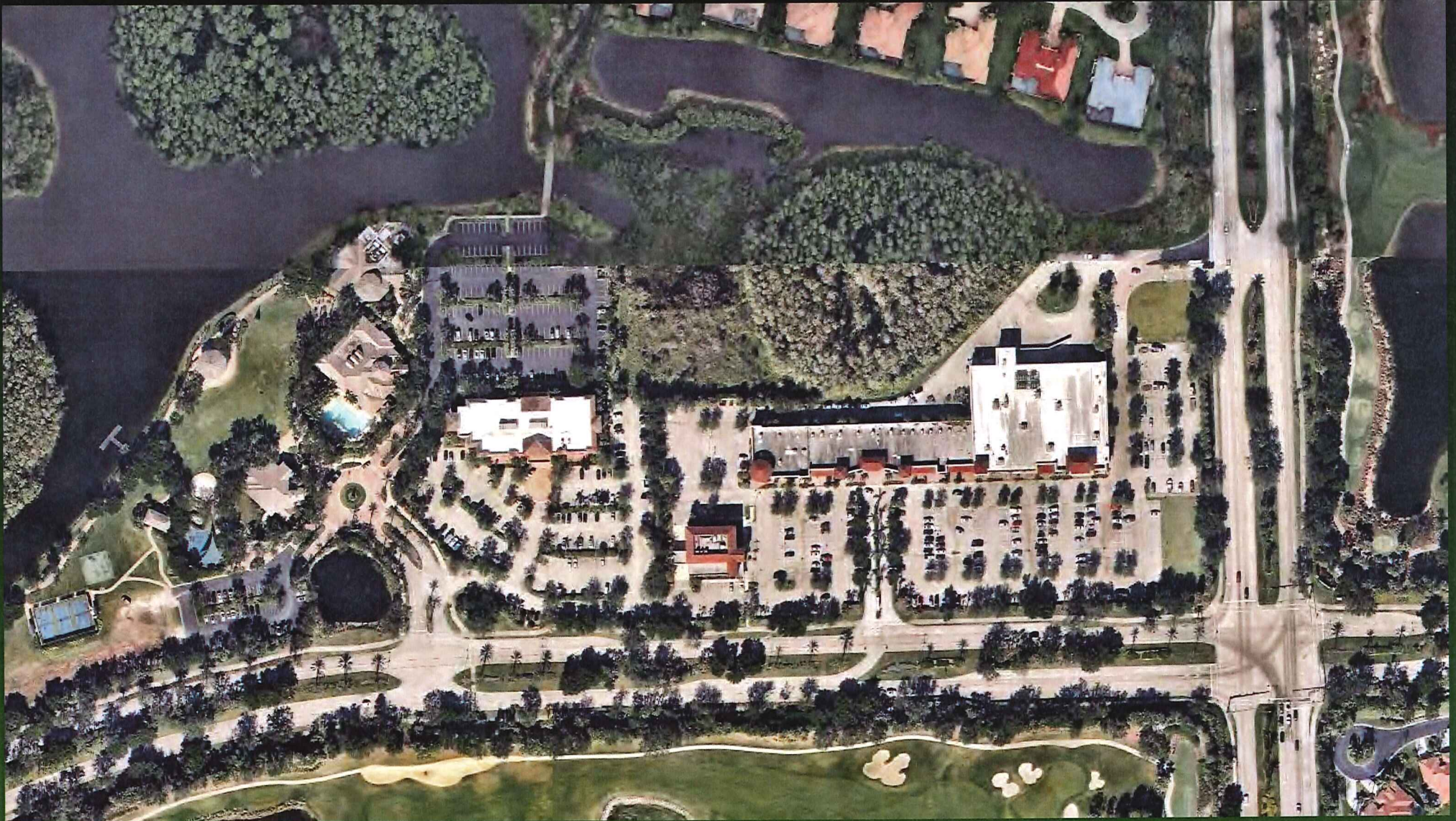
Cascades
Entry

Street Views of Case Study Area



Proximity of sidewalk to edge of street does not allow ample room for protected street trees, and poses a hazard for pedestrians. Buffers are nicely designed and maintained, but parkway median appears minimally maintained with no shrubs.

Aerial View of Coconut Rd and Three Oaks Pkwy



The Village identified Coconut Rd. and Three Oaks Pkwy as two of the best landscaped streets in the village, and have expressed the desire to do emulative landscaping on Estero Parkway. Having designed these almost 20 years ago, along with many more miles of multi lane roadways, we have a clear understanding of how to organize the landscaping in the most desirable fashion to promote safety and heightened aesthetics.

Examples of Typical Coconut Road Landscaping



Although Estero Pkwy is not curbed in its entirety like Coconut Road, these photos represent combinations of native and ornamental shrubs in continuous free flowing beds with Live Oaks as the dominant street tree. Intersections are heralded by groupings of large Date Palms announcing adjacent community entries.



Examples of Typical Three Oaks Pkwy Landscaping



We typically utilize large scale palm trees and beds of seasonal flowers to highlight a forthcoming intersection. Even Sabal Palms next to the road have a tendency to slow traffic and encapsulate the views.

Examples of Typical Three Oaks Pkwy Landscaping



To establish continuity of design concept, we extend the landscaping from the community buffers all the way out to the roadway, with the inclusion of large growing street trees.

Coconut Rd. – With and Without Proximal Trees

These 2 images reinforce the importance of street trees being close to the travel lanes.

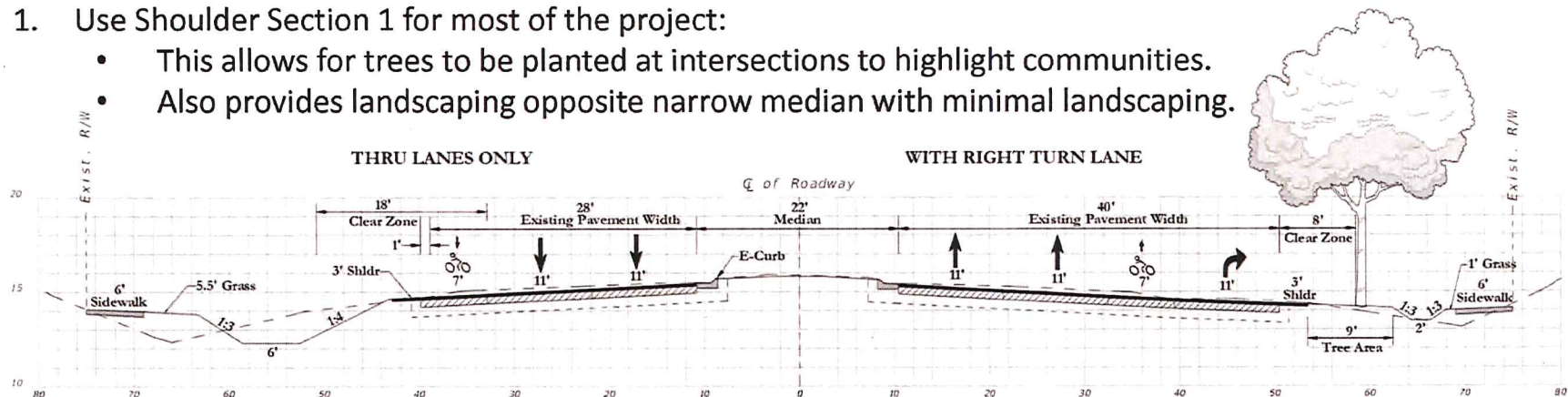
Large canopy trees establish a level of permanence and comfort with their overhanging canopies that imparts a feeling of higher quality to the whole village.



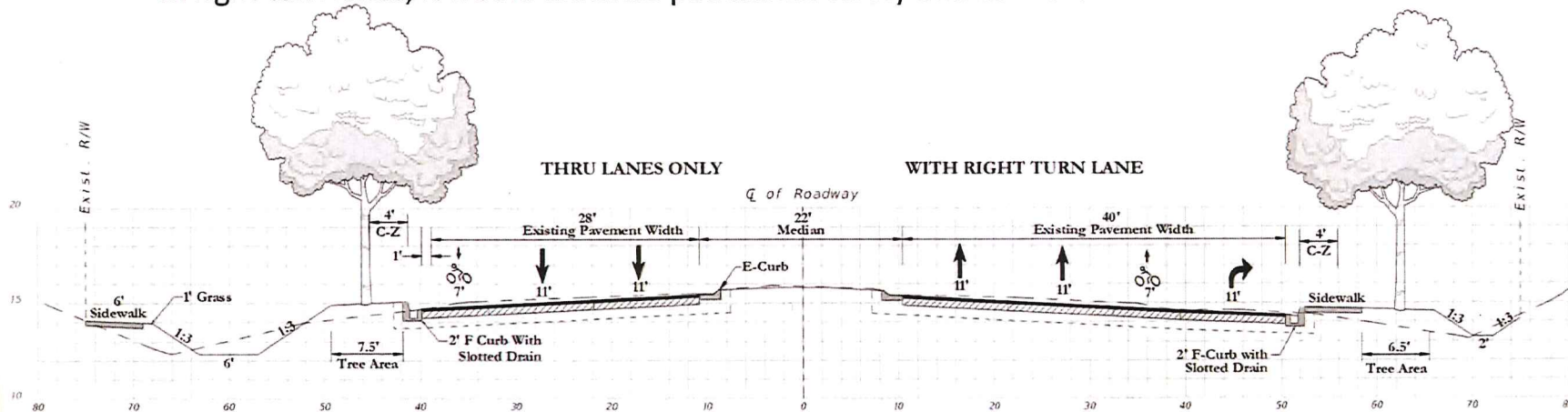
Last Roadway Sections Approved by Council

Shoulder Section Recommendations

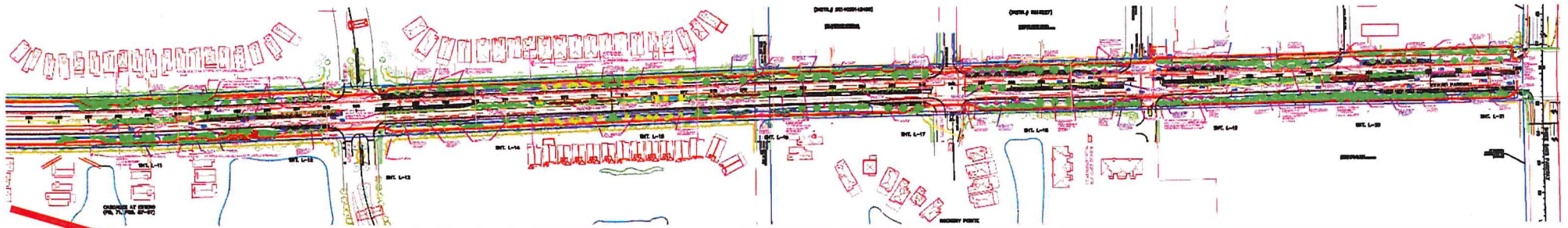
1. Use Shoulder Section 1 for most of the project:
 - This allows for trees to be planted at intersections to highlight communities.
 - Also provides landscaping opposite narrow median with minimal landscaping.



2. Shoulder Section 3 in select areas:
 - In thru lanes, this could be added to create a meandering sidewalk and "mid-block" tree clusters.
 - In right turn lanes, it would enhance pedestrian safety and comfort.



Conceptual Landscape Design for Case Study Area

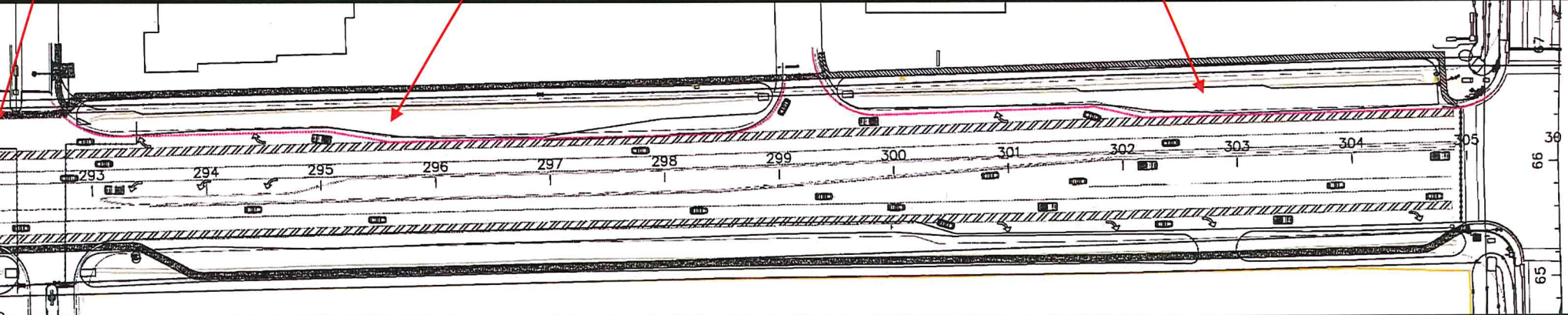


To fully illustrate our design concept we concentrated on the eastern half of the roadway extending from station point 258 to 305 (approximately 4,700 feet). We envision the western half being of a similar flavor, perhaps not as expensive due to more commercial and less extensive residential.

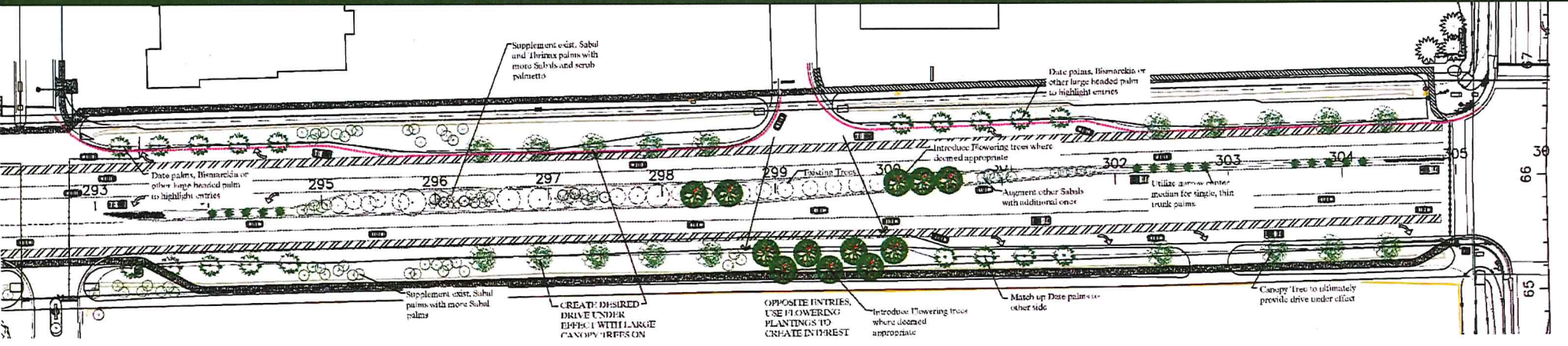
Conceptual Landscape Design for Case Study Area

The colored line represents proposed curbing, the only curbing in the east half of the project.

Continues 1 more block as shown on following slide.

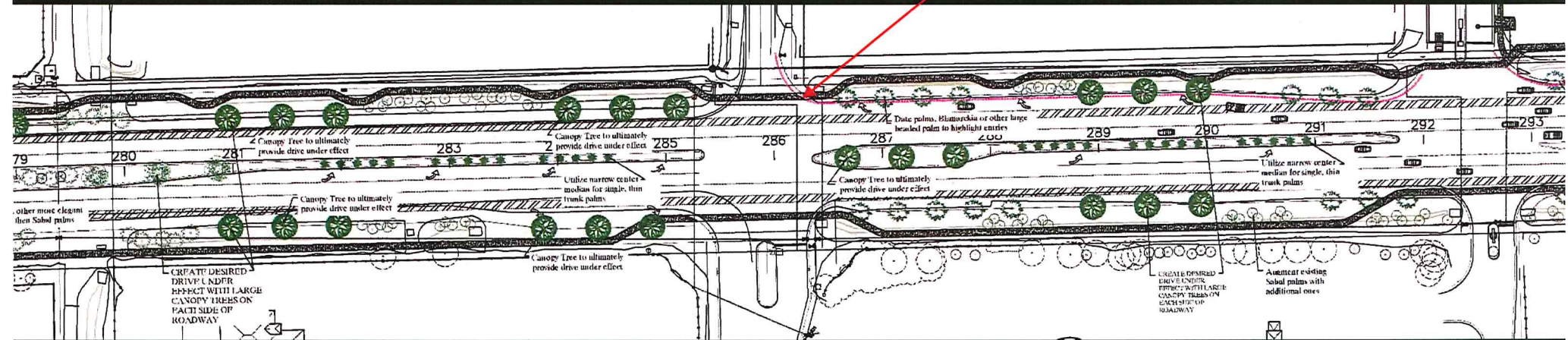


Beginning with the intersection of Three Oaks Parkway and Estero Parkway, we need to set the tone quickly with large scale street trees and the more elegant Date Palms. By curbing this north section of the road, we are able to plant the trees within 4 feet of the roads edge, keeping them away from existing power lines. The south side does not have the same power lines so the trees are 18' back from south edge of the through lane.

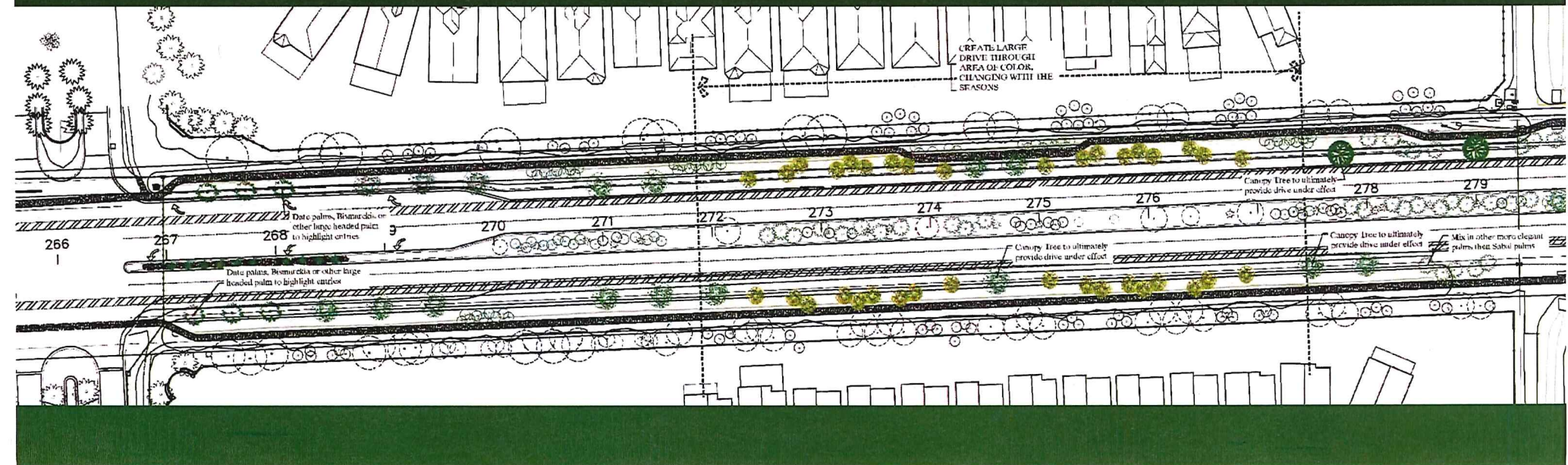


Conceptual Landscape Design for Case Study Area

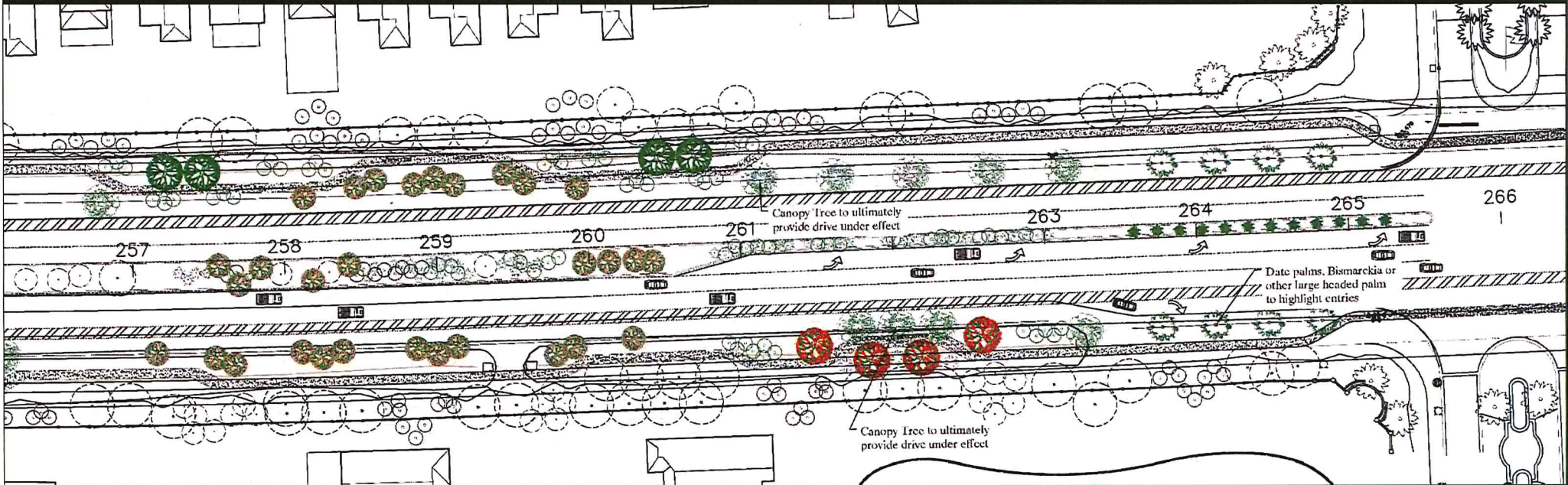
End of curbed section



Continuing with the tree display, you get a sense for the rhythm we are trying to create with the date palms at the entries and intersections, large canopy trees intermittingly spaced to give us that desired "drive under" flavor coupled with thin trunk palms for the narrow medians.

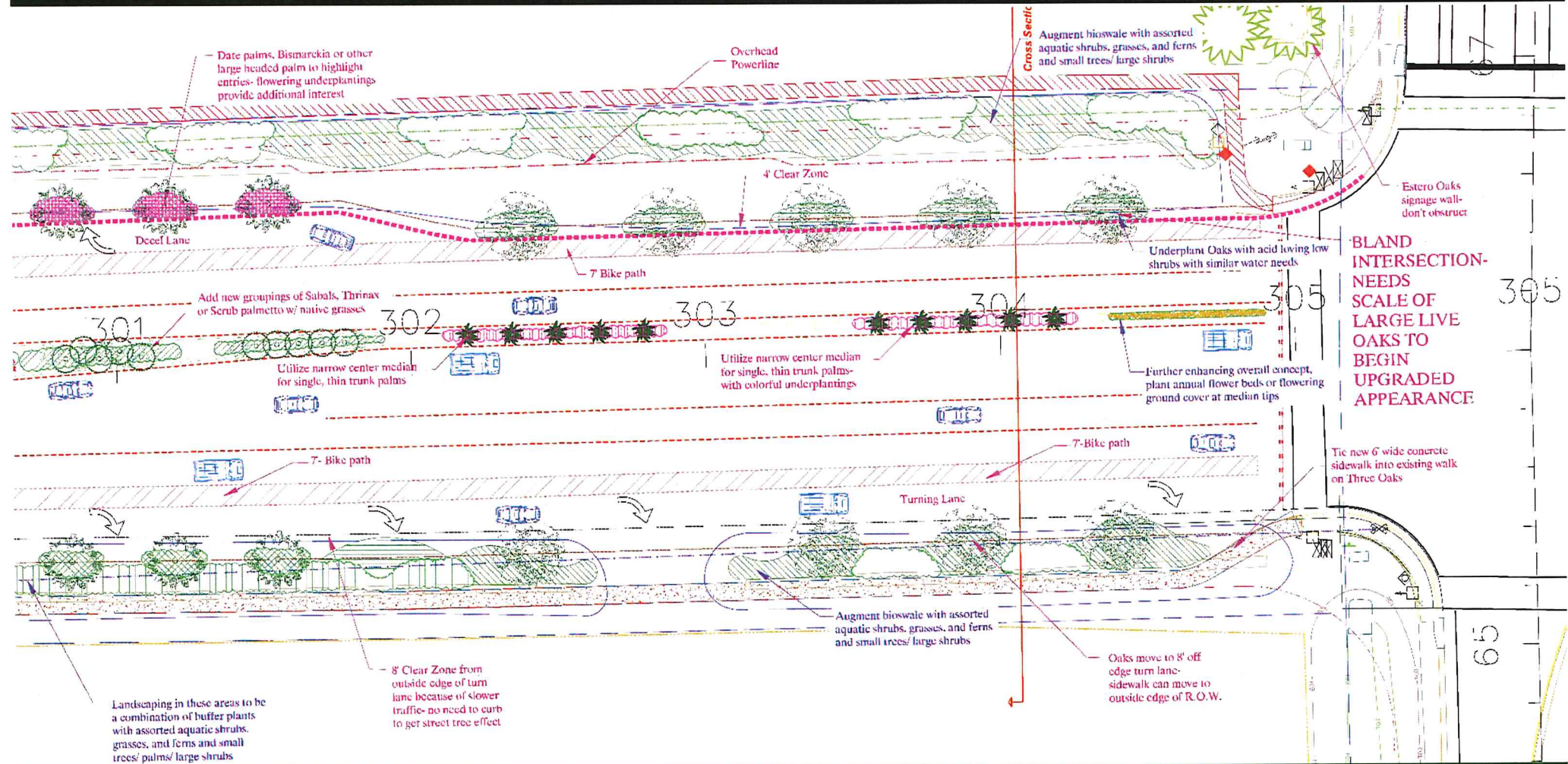


Conceptual Landscape Design for Case Study Area



Along with the Date Palms, canopy trees, and thin trunked median palms, we are proposing masses of flowering trees to create areas of drive through color changing with the seasons.

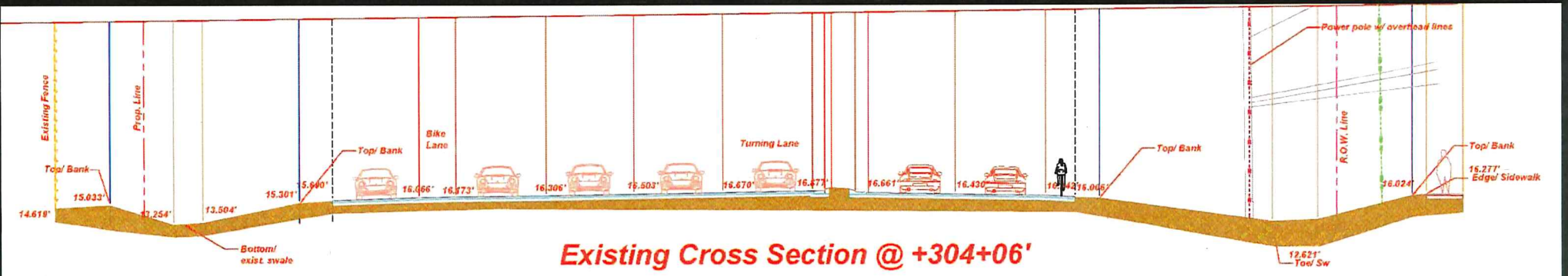
Conceptual Landscape Design for Case Study Area



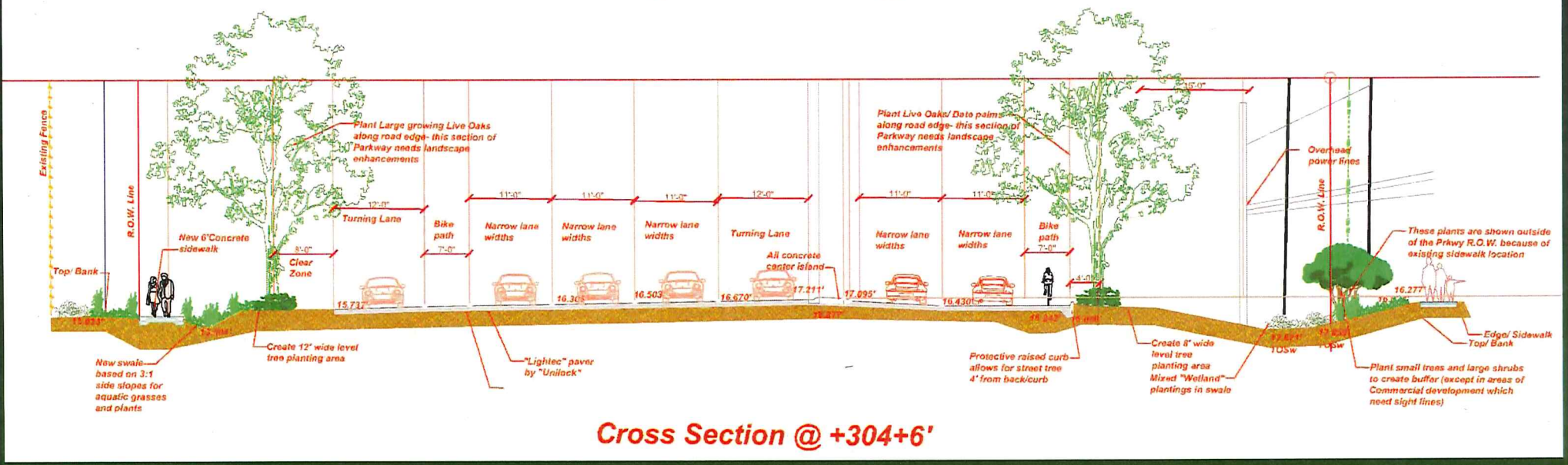
Completing the landscape picture, are the proposed underplantings of assorted shrubs included in the conceptual design to assist in accurate budget pricing.

NOTE: the orange section line shown at station point 304 is depicted on the following slide.

Conceptual Landscape Design for Case Study Area



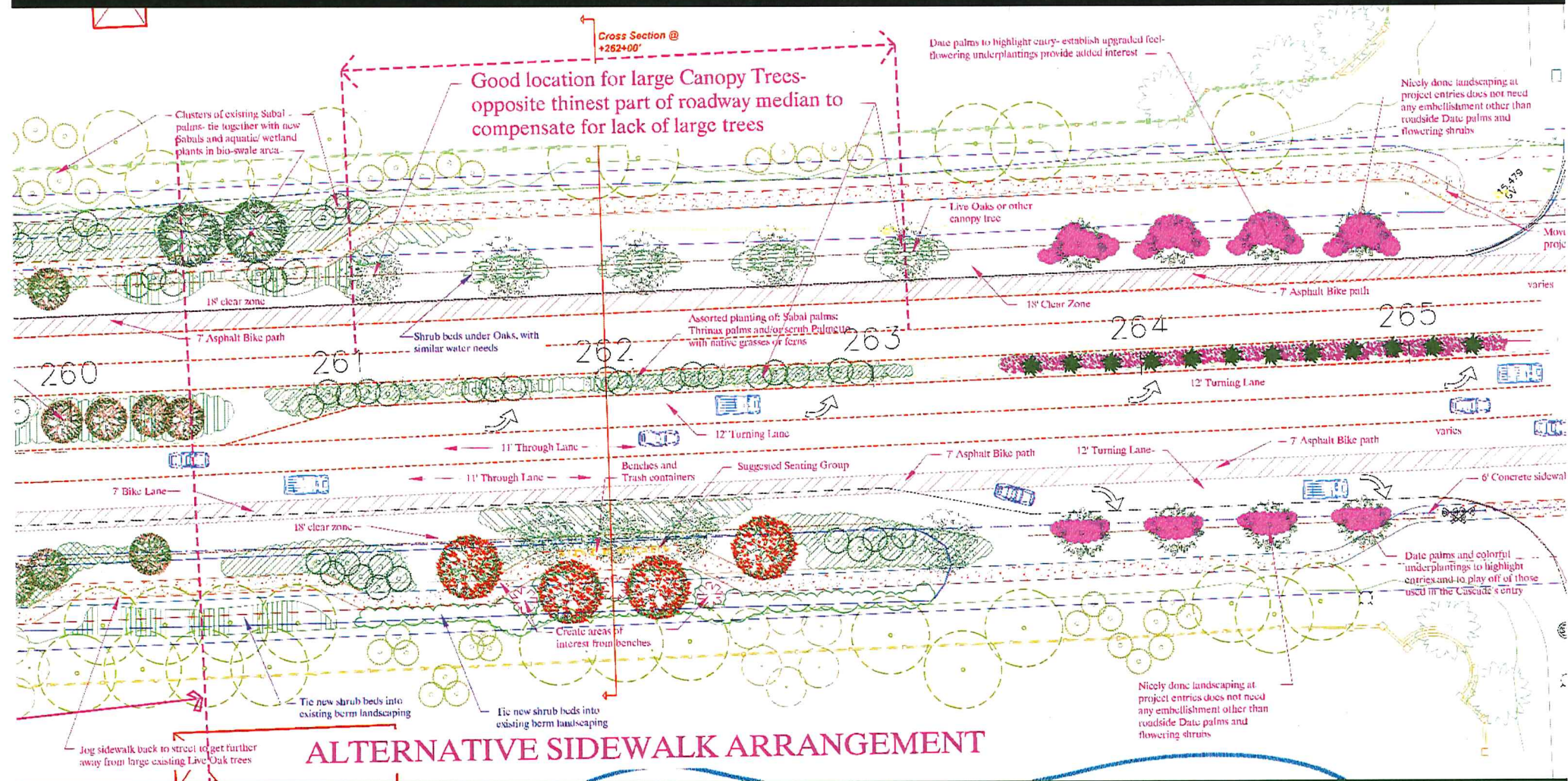
Existing Cross Section @ +304+06'



Cross Section @ +304+6'

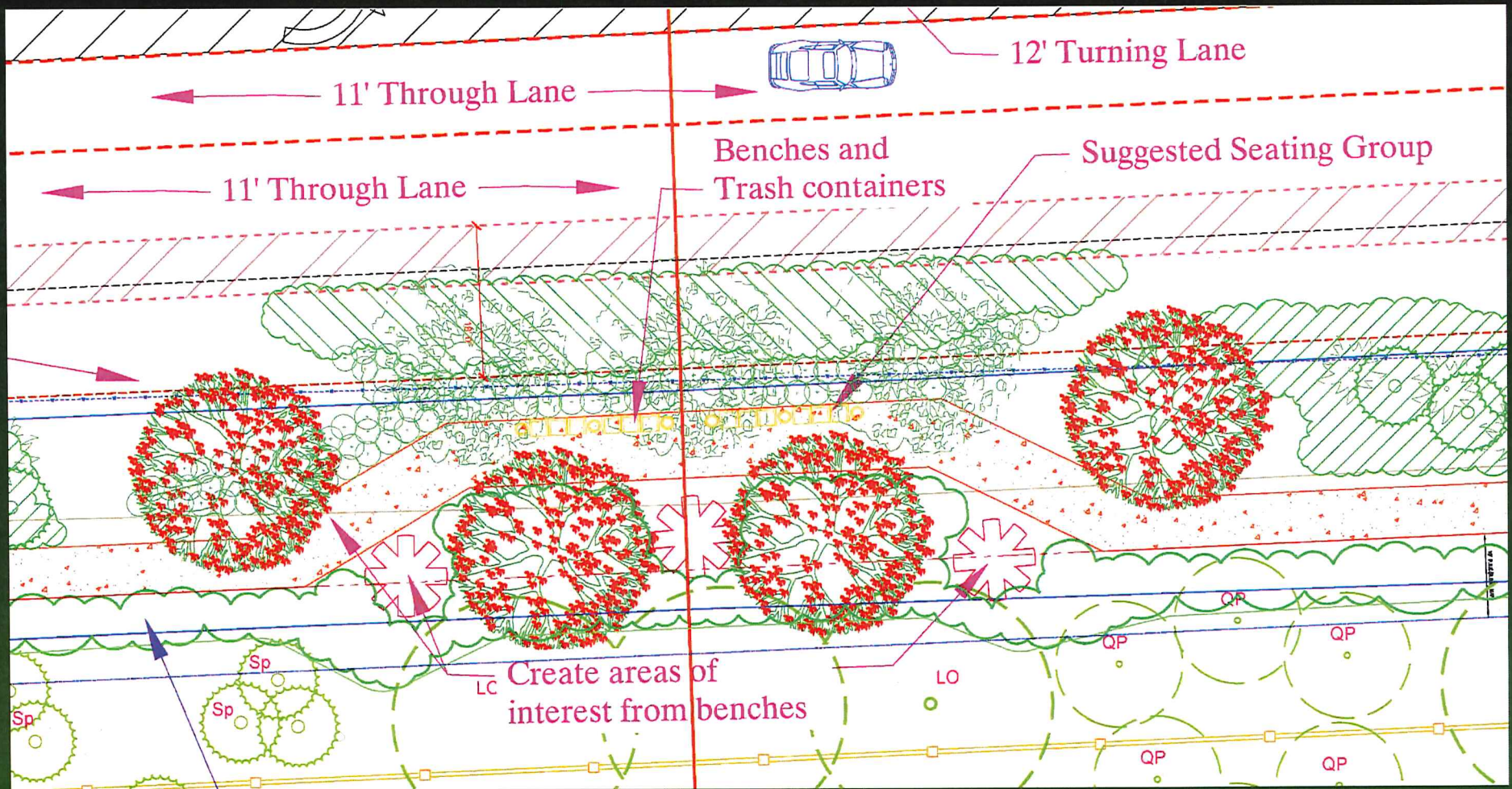
In this representative section you see the immediate impact of the large street trees, new sidewalk on the south and we have begun to introduce wetland into the swale areas for beautification and lessening the slope from 4:1 to 3:1.

Conceptual Landscape Design for Case Study Area



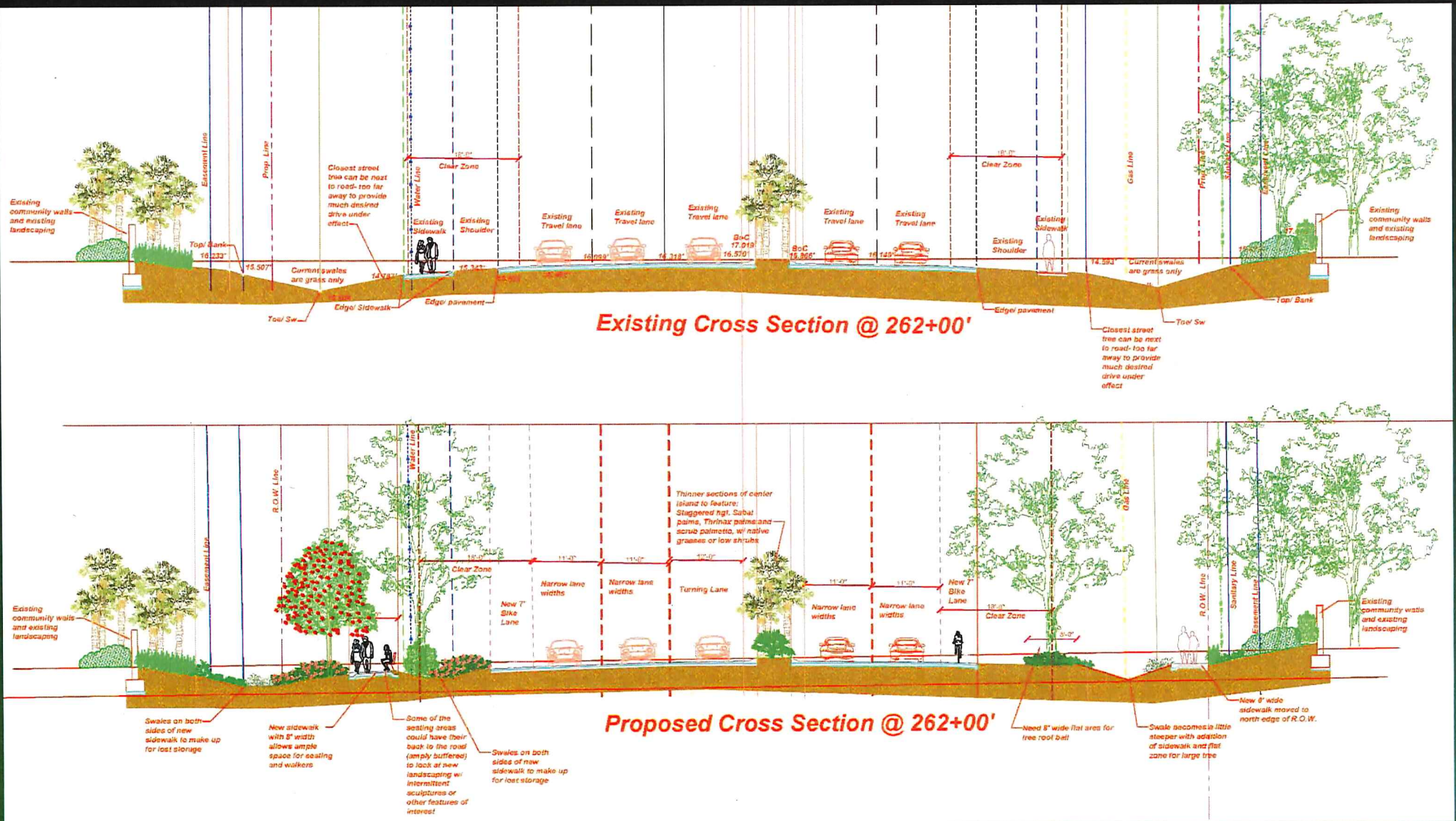
On the south side at station point 262, we have introduced a seating (or rest area), widening the sidewalk to 8' to allow for benches and pedestrian travel. If affordable, drinking fountains would be a nice addition.

Conceptual Landscape Design for Case Study Area



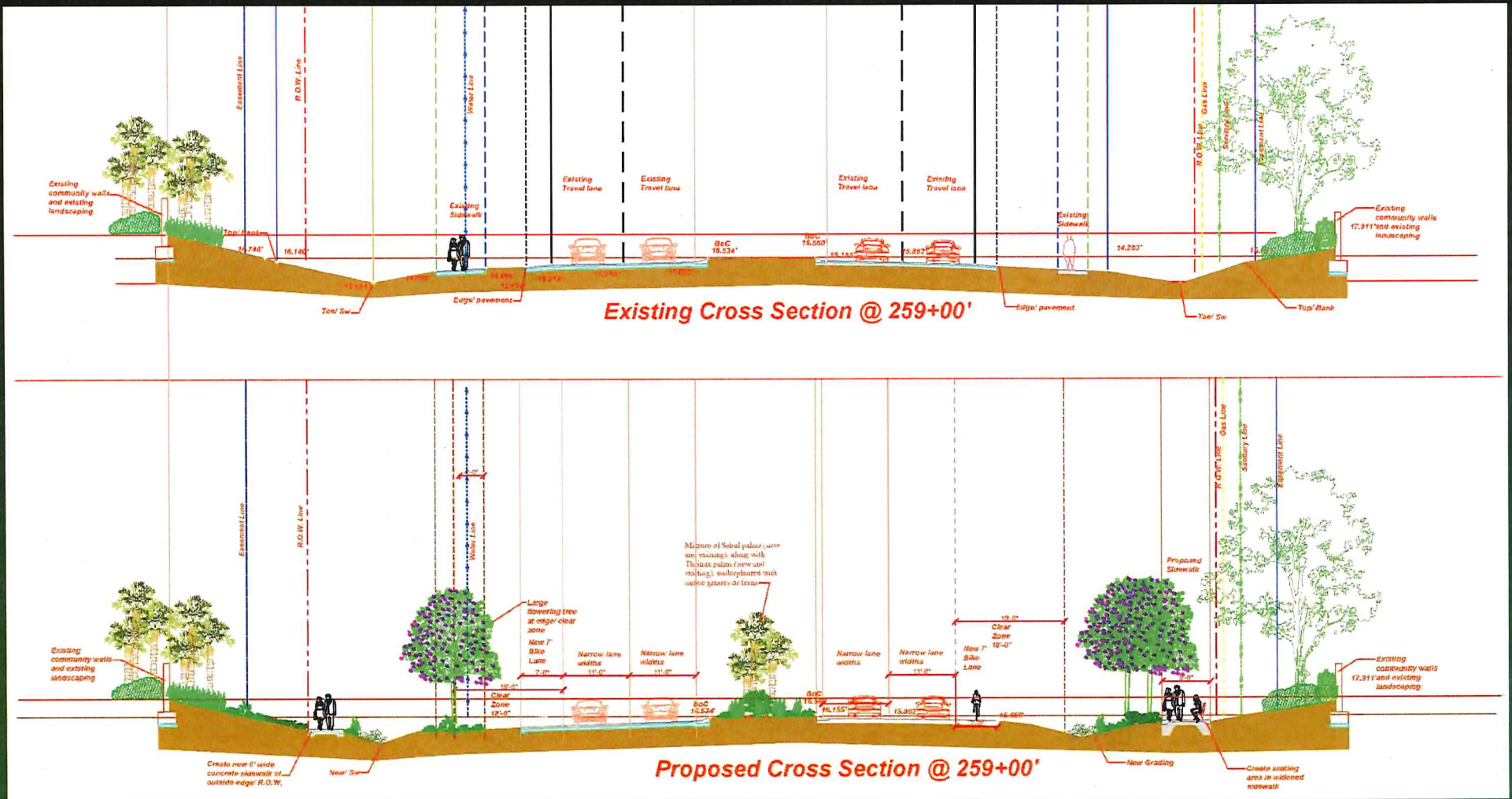
A blowup of this seating area illustrates that the benches can have their backs to the road or visa versa. Large trees provide much needed shade with the future possibility of enhancing these areas with donated sculptures or park like elements. These can be part of an ongoing enhancement of this pedestrian corridor.

Conceptual Landscape Design for Case Study Area



Changing of existing sidewalks and creating a seating area on the south side with the addition of large canopy street trees.

Conceptual Landscape Design for Case Study Area



Another representative cross section illustrates the additional sidewalks, seating areas, and enhanced median plantings.

Budget Considerations



With a mile and $\frac{3}{4}$ of 150' wide ROW, budget may dictate that the initial vegetation may be a little smaller than the mature roadways we have illustrated with Coconut Rd. and Three Oaks Pkwy.



Large Shade Trees

Live Oaks



Japanese Blueberry



“Shady Lady” Black Olive

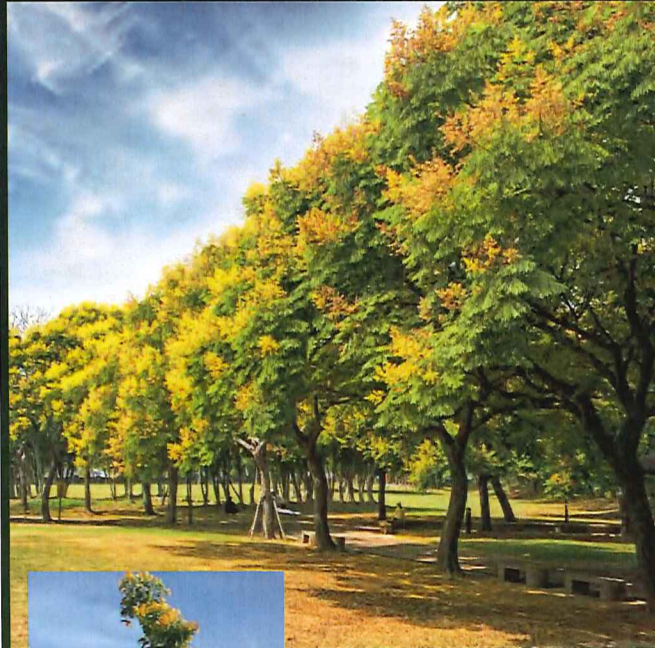


Street Trees are available in many sizes varying from 65 gal to 400 gal containers to Field Grown.



Flowering Trees

Golden Rain Tree



Pink Cassia



Dombeya



Apple Blossom Cassia



Verawood



Pink Tabebuia



White Geiger

Palms

Christmas Palm



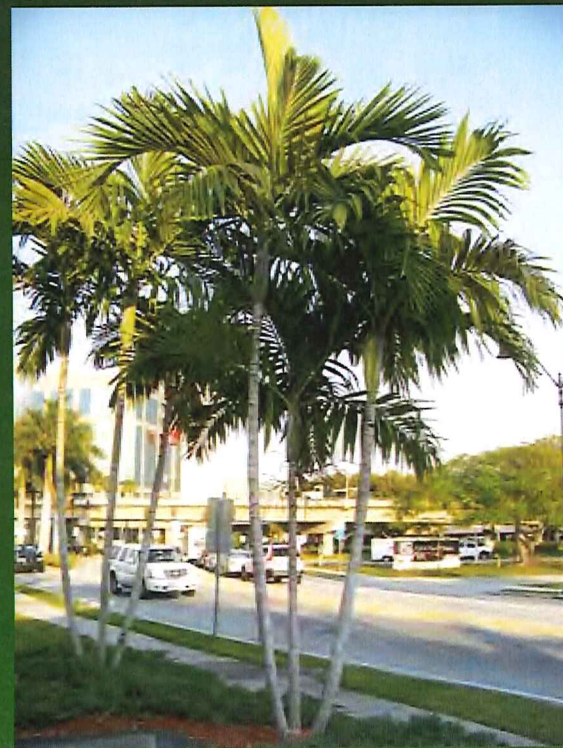
Sabal Palm



Bismark Palm



Solitaire Palm



Thrinax Palm



Copernicia Palm



Shrubs, Palms, and Grasses



Green Island Ficus



Muhly Grass

Coontie Fern



Dwarf Clusia



Burle Marx Philodendron



Gamma Grass



Silver Saw Palmetto



Variegated Dwarf Schefflera



Flowers and Year Round/Seasonal Color

Lily of the Nile



Pentas



Ruellia



Bougainvillea



Assorted Wetland Plantings



Various Bromeliads



Bird of Paradise



Conceptual Budget Estimate

Landscape Estimate for 50% of Estero Parkway

Plant Types	Quantity	Price \$	SubTotal
Large Street Trees	72	\$2,500	\$180,000
Large Flowering Trees	4	\$1,500	\$6,000
Smaller Flowering Trees	72	\$750	\$54,000
Date Palms	47	\$5,000	\$235,000
Copernicia Palms	42	\$1,500	\$63,000
Alexander Palms	67	\$750	\$50,250
Sabal Palms	252	\$250	\$63,000
Thrinax Palms	63	\$500	\$31,500
Mid Size Trees	21	\$500	\$10,500
Small Trees	35	\$375	\$13,125
Large Shrubs	1,429	\$25	\$35,725
Flowering Shrubs	32,585 sf	\$1.50	\$48,878
Shrubs/Grasses	87,271 sf	\$1.25	\$109,089
Sod	172,960 sf	\$0.50	\$86,480
		TOTAL:	\$986,546

Overall Budget Summary

Overall Landscape Budget: \$3,500,000

Landscape Budget: \$2,100,000 - Irrigation Budget: \$1,400,000

Case Study Area Landscaping (50% of total Budget): \$1,050,000

Anticipated Estimate: \$986,546



BRUCE HOWARD &
ASSOCIATES, INC.

Landscape Architects, Site Planners
& Golf Course Designers

4872 S.W. 72nd Avenue
Miami, FL 33155
(305) 668-3196

Bruce Howard – email: bruce@brucehoward.net

ATTACHMENT 2

Preliminary Engineer's Opinion of Probable Construction Cost
November 30, 2018

PROJECT OVERVIEW

Item No.	Description	Previous Cost (May 2018)	Current Cost
1	MILL & OVERLAY	\$1,310,000	\$1,300,000
2	CURB WITH SLOTTED DRAIN	\$750,000	\$750,000
3	CONDUIT	\$230,000	\$230,000
4	ROADWAY SIGNAGE	\$85,000	\$85,000
5	6' CONCETE SIDEWALKS	\$500,000	\$420,000
6	DRAINAGE AND SWALES	\$1,140,000	\$1,140,000
7	LANDSCAPING	\$2,140,000	\$2,000,000
8	IRRIGATION	\$1,195,000	\$1,400,000
9	ROADWAY LIGHTING	\$1,200,000	\$1,200,000
10	UTILITY RELOCATIONS	\$150,000	\$150,000
11	ADDITIONAL ASPHALT (1-FT)	\$320,000	\$140,000
12	ACCESS MANAGEMENT IMPROVEMENTS	\$0	\$375,000
	TOTAL	\$9,020,000	\$9,190,000