

ARCOS EXECUTIVE CENTER

PATTERN BOOK

VILLAGE OF ESTERO

REVISED MAY 2018



ARCOS EXECUTIVE CENTER

PATTERN BOOK

TABLE OF CONTENTS:

VICINITY MAP _____	PAGE 2
ARCHITECTURAL NARATIVE _____	PAGE 3
ARCHITECTURAL ELEVATIONS _____	PAGE 4,5,6,7
ARCHITECTURAL VIEWS _____	PAGE 8
STREET VIEWS _____	PAGE 9,10,11
LANDSCAPE PLAN _____	PAGE 12
BOARDWALK & HERITAGE OAK CONCEPT VIEW _____	PAGE 13
BOARDWALK & HERITAGE OAK PLAN _____	PAGE 14
CONNECTIVITY MAP _____	PAGE 15
ENTRY CONCEPT PERSPECTIVE _____	PAGE 16
MONUMENT SIGN _____	PAGE 17
SITE CROSS-SECTIONS _____	PAGE 18
SITE LIGHTING SPEC _____	PAGE 19
CONSULTANT TEAM _____	PAGE 20

**Disclaimer: The following images and renderings are conceptual and subject to change.

ARCOS EXECUTIVE CENTER

PATTERN BOOK

VICINITY MAP



ARCOS EXECUTIVE CENTER

PATTERN BOOK

ARCHITECTURAL NARRATIVE

Mediterranean Features

- Warm Earth Tones
- Travertine veneer
- Cornices along the top
- Sloped barrel tile roof
- Arched details
- Column Features
- Tower Elements

Class A Office Building Features

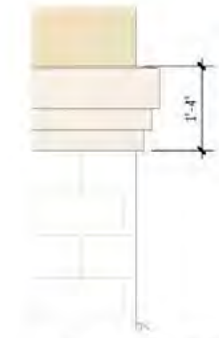
- Large Lobby Area with Stone Tile and Wood Paneling
- Two (2) elevators with Stone Tile and Wood Paneling
- Card Access security system at entrances
- High Quality finish packages
- Tray ceiling with optional coffered ceilings
- Minimum 9-foot high ceiling
- Cleaning and trash removal service for all tenants

ARCOS EXECUTIVE CENTER

PATTERN BOOK



③ Typical Corbel
1/2" = 1'-0"



④ Typical Small Cornice
1/2" = 1'-0"



ARCOS EXECUTIVE CENTER

SOUTH ARCHITECTURAL ELEVATION

PATTERN BOOK



ARCOS EXECUTIVE CENTER

EAST ARCHITECTURAL ELEVATION

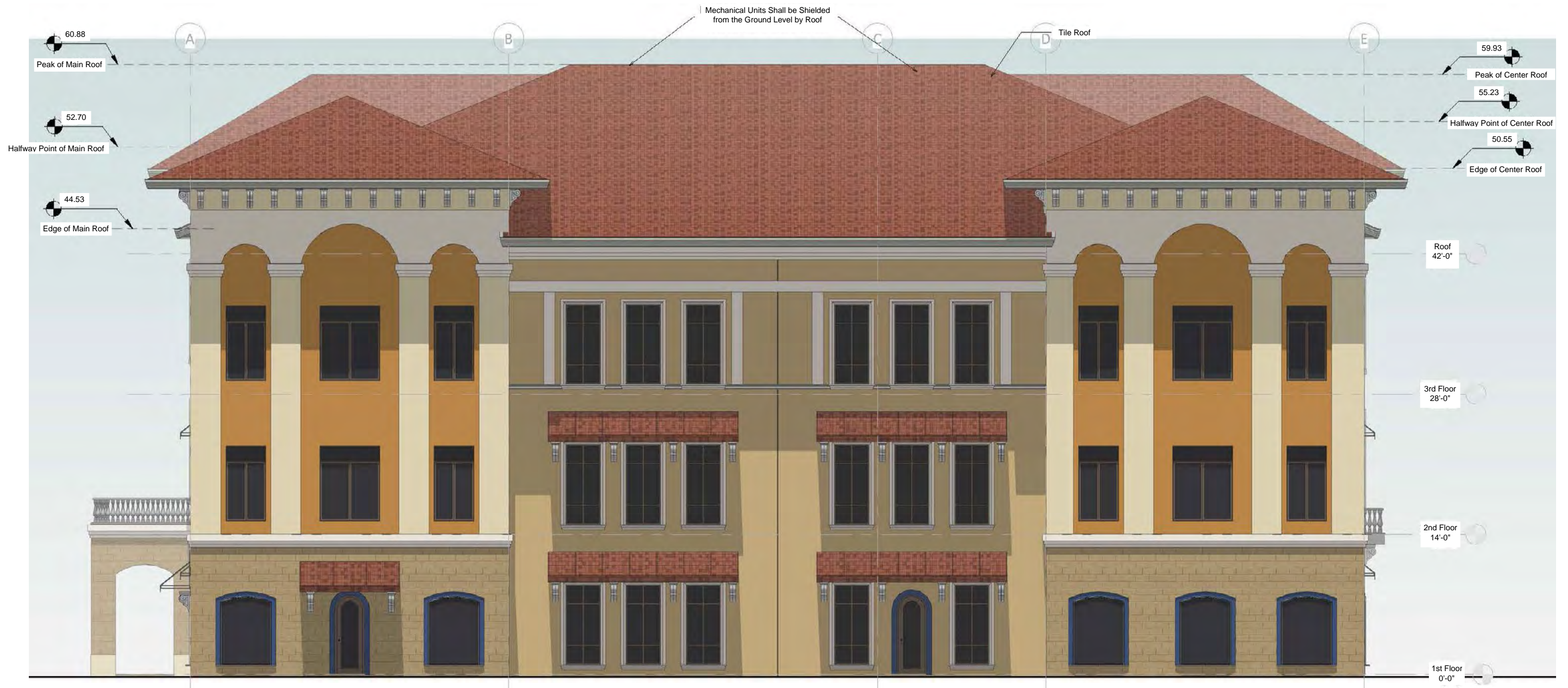
PATTERN BOOK



ARCOS EXECUTIVE CENTER

WEST ARCHITECTURAL ELEVATION

PATTERN BOOK



ARCOS EXECUTIVE CENTER

ARCHITECTURAL VIEWS

PATTERN BOOK



LOOKING FROM NORTH WEST



LOOKING FROM SOUTH EAST

ARCOS EXECUTIVE CENTER

CORKSCREW & THREE OAKS INTERSECTION - STREET VIEW

PATTERN BOOK



ARCOS EXECUTIVE CENTER

WESTBOUND CORKSCREW - STREET VIEW

PATTERN BOOK



ARCOS EXECUTIVE CENTER

THREE OAKS PARKWAY - STREET VIEW

PATTERN BOOK



ARCOS EXECUTIVE CENTER

LANDSCAPE PLAN

PATTERN BOOK



B

ARCOS EXECUTIVE CENTER

BOARDWALK & HERITAGE OAK CONCEPT VIEW

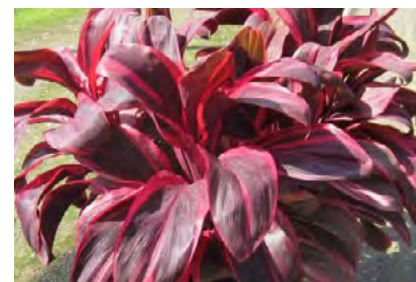
PATTERN BOOK



ARCOS EXECUTIVE CENTER

BOARDWALK & HERITAGE OAK PLAN

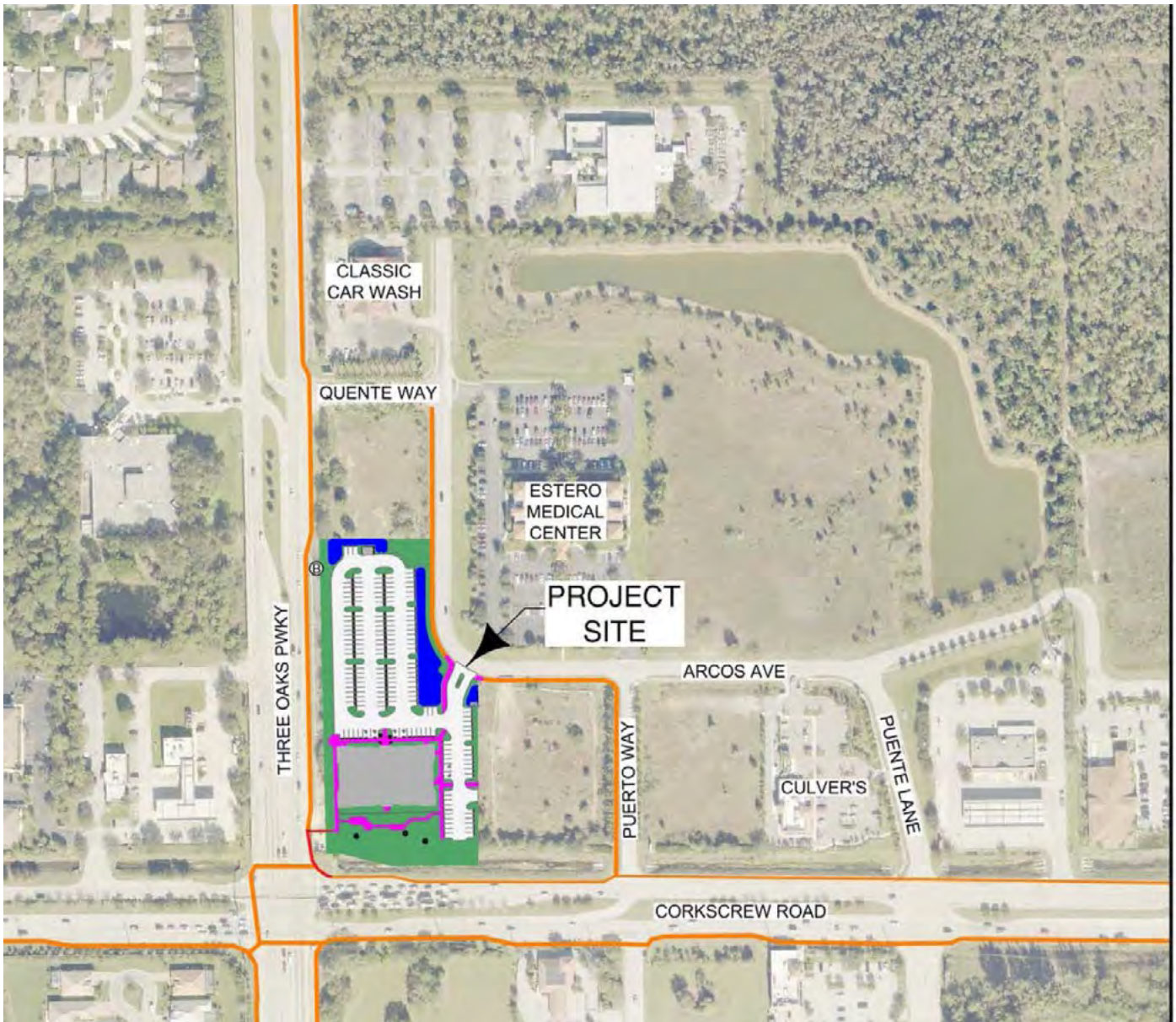
PATTERN BOOK









ARCOS EXECUTIVE CENTER

PATTERN BOOK

CONNECTIVITY MAP



LEGEND	
	EXISTING PEDESTRIAN SIDEWALK
	PROPOSED SIDEWALK
	FUTURE SIDEWALK
	PROPOSED DETENTION AREA
	PROPOSED BUILDING
	EXISTING LEE TRAN BUS STOP

ARCOS EXECUTIVE CENTER

ENTRY CONCEPT PERSPECTIVE

PATTERN BOOK



ARCOS EXECUTIVE CENTER

MONUMENT SIGN

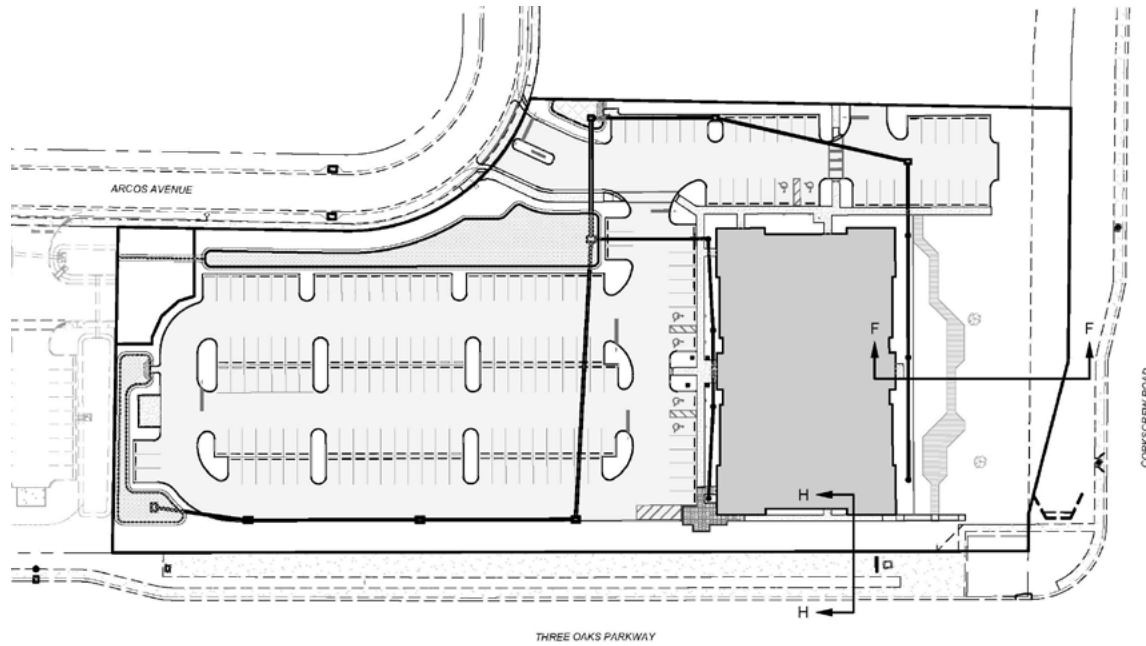
PATTERN BOOK



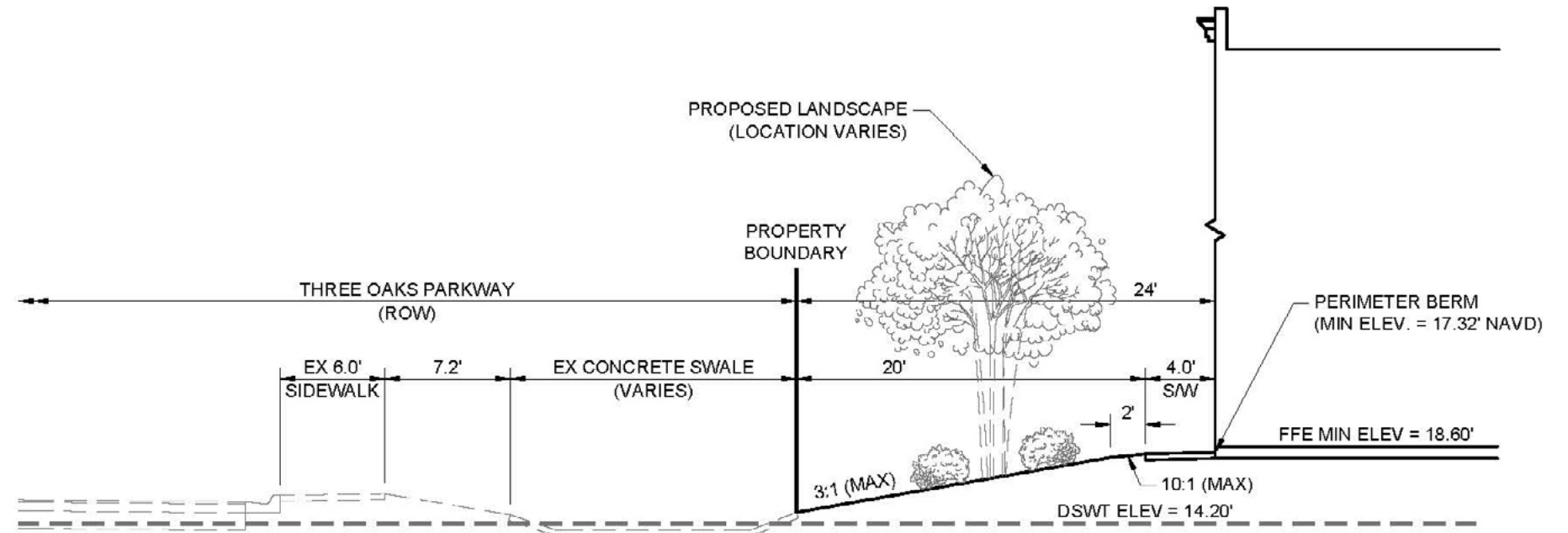
ARCOS EXECUTIVE CENTER

CROSS SECTIONS

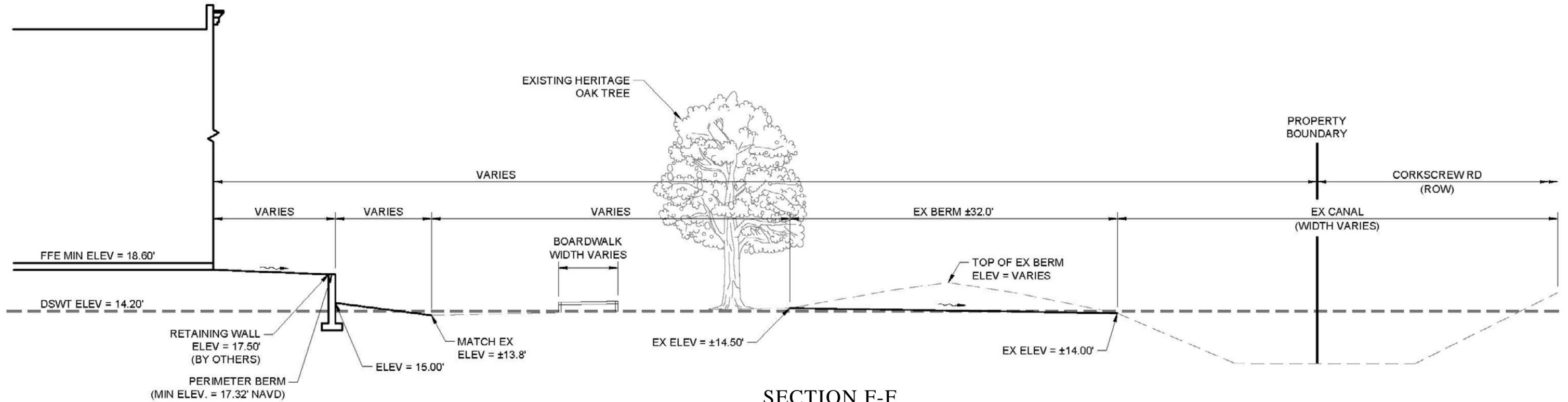
PATTERN BOOK



CROSS SECTION MAP



SECTION H-H



SECTION F-F

ARCOS EXECUTIVE CENTER

PATTERN BOOK

SITE LIGHTING SPEC

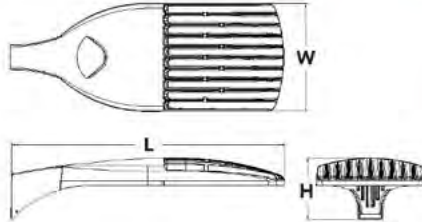


D-Series Size 1 LED Area Luminaire



Specifications

EPA:	1.01 ft ² (0.09 m ²)
Length:	33" (838 mm)
Width:	13" (330 mm)
Height:	7-1/2" (190 mm)
Weight (max):	27 lbs (12.2 kg)



NOTE: POLE SHALL BE ROUND TAPERED, EXTRUDED 6063 ALUMINUM ALLOY WITH 4-BOLT CAST ALUMINUM BASE, STAINLESS STEEL HARDWARE, 0.156" WALL THICKNESS, 7" BASE DIAMETER, 4.5" TOP DIAMETER, SIDE DRILL MOUNT, WHITE POWDER COAT FINISH AND LENGTH TO PROVIDE 25' FIXTURE MOUNTING HEIGHT ON TOP OF CONCRETE BASE.

Catalog Number _____
 Title: _____
 Type: _____

Capable Luminaire

This item is an A+ capable luminaire, which has been designed and tested to provide consistent color appearance and system-level interoperability.

- All configurations of this luminaire meet the Acuity Brands' specification for chromatic consistency
- This luminaire is A+ Certified when ordered with DTL® controls marked by a shaded background. DTL DLL equipped luminaires meet the A+ specification for luminaire to photocontrol interoperability¹
- This luminaire is part of an A+ Certified solution for ROAM® or XPoint™ Wireless control networks, providing out-of-the-box control compatibility with simple commissioning, when ordered with drivers and control options marked by a shaded background

To learn more about A+, visit www.acuitybrands.com/aplus.

1. See ordering tree for details.
2. A+ Certified Solutions for ROAM require the order of one ROAM node per luminaire. Sold Separately: [Link to Roam](#); [Link to DTL DLL](#)

A+ Capable options indicated by this color background.

Ordering Information

EXAMPLE: DSX1 LED P7 40K T3M MVOLT SPA DDBXD

Series	LEDs	Color temperature	Distribution	Voltage	Mounting	
DSX1 LED	Forward optics P1 P4 P7 P2 P5 P8 P3 P6 P9 Rotated optics P10' P12' P11' P13'	30K 3000K 40K 4000K 50K 5000K AMBPC Amber phosphor converted ²	T1S Type I short T2S Type II short T2M Type II medium T3S Type III short T3M Type III medium T4M Type IV medium TFTM Forward throw medium TSVS Type V very short	TSS Type V short TSM Type V medium TSW Type V wide BLC Backlight control ^{2,3} LCCO Left corner cutoff ^{2,3} RCCO Right corner cutoff ^{2,3}	MVOLT ⁴ 120 ⁵ 208 ⁵ 240 ⁵ 277 ⁵ 347 ^{5,6} 480 ^{5,6}	Shipped included SPA Square pole mounting RPA Round pole mounting WBA Wall bracket SPUMBA Square pole universal mounting adaptor ⁷ RPUMBA Round pole universal mounting adaptor ⁷ Shipped separately MMBAS DDBXD U Master mounting bracket adaptor (specify finish) ⁸

Control options	Other options	Finish	
Shipped installed PER NEMA twist lock receptacle only (controls ordered separately) ^{1,9} PERS Five-wire receptacle only (controls ordered separately) ^{1,9} PERZ Seven-wire receptacle only (controls ordered separately) ^{1,9} DMG 0-10V dimming extend out back of housing for external control (leads exit frame) DS Dual switching ^{10,11} PIR Bi-level, motor/ambient sensor, 8-15' mounting height, ambient sensor enabled at 5k ^{12,13} PIRH Bi-level, motor/ambient sensor, 15-20' mounting height, ambient sensor enabled at 5k ^{12,13} PIRHCV Bi-level, motor/ambient sensor, 8-15' mounting height, ambient sensor enabled at 1k ^{12,13}	PIRHFC3V Bi-level, motor/ambient sensor, 15-20' mounting height, ambient sensor enabled at 1k ^{12,13} BL30 Bi-level switched dimming, 30%-100% BL50 Bi-level switched dimming, 50%-100% PHMTDD3 Part night, dim 5 hrs ¹⁴ PHMTSD3 Part night, dim 5 hrs ¹⁴ PHMT6D3 Part night, dim 6 hrs ¹⁴ PHMT7D3 Part night, dim 7 hrs ¹⁴ FAO Flexi adjustable output ¹⁵	Shipped installed HS House-side shield ¹⁶ SF Single fuse (120, 277, 347V) ¹⁷ DF Double fuse (208, 240, 480V) ¹⁷ L90 Left rotated optics ¹ R90 Right rotated optics ¹ BS Bridgeway ¹⁸ EGS External glare shield	DDBXD Dark bronze DBLXD Black DNAXD Natural aluminum DWHXD White DDBTXD Textured dark bronze DBLTXD Textured black DNATXD Textured natural aluminum DWHGXD Textured white



ARCOS EXECUTIVE CENTER

PATTERN BOOK

CONSULTANT TEAM

LAI DESIGN ASSOCIATES, LLC – *DEVELOPER / ARCHITECT*



J.R. EVANS ENGINEERING, P.A. – *CIVIL ENGINEER*



WINDHAM STUDIO, INC – *LANDSCAPE ARCHITECT*

