

**LEGEND**

- AREA OF INDIGENOUS WITH NO CREDIT
- AREA OF INDIGENOUS WITH 10% CREDIT (MIN. 50' WIDE & 1/2 ACRE)
- AREA OF INDIGENOUS WITH 50% CREDIT (MIN. 100' WIDE & 3 ACRES)
- AREA OF INDIGENOUS WITH OVER 75% EXOTICS
- PRESERVE AREA BOUNDARY

**OPEN SPACE CALCULATIONS:**

**REQUIRED OPEN SPACE:**

NON-RESIDENTIAL USE - 5.85 AC. x 30% = 1.75 AC.  
 RESIDENTIAL USE - 35.99 AC. x 40% = 14.40 AC.  
 TOTAL = 16.15 AC.

**REQUIRED INDIGENOUS:**

50% OF REQUIRED OPEN SPACE  
 REQUIRED OPEN SPACE = 16.15  
 16.15 x 50% = 8.07 AC.

**PROVIDED OPEN SPACE:**

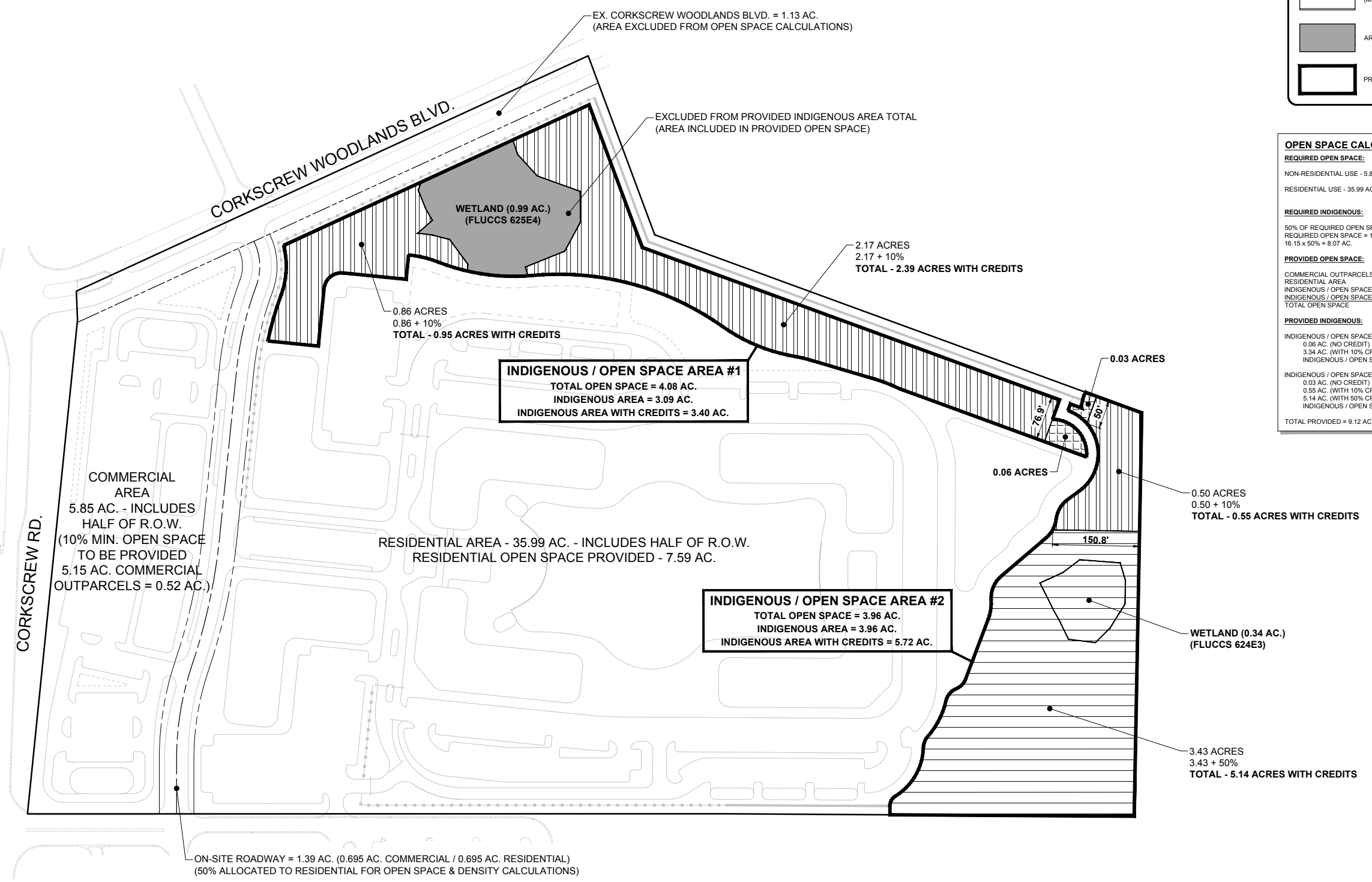
COMMERCIAL OUTPARCELS (10%) 0.52 AC.  
 RESIDENTIAL AREA 7.59 AC.  
 INDIGENOUS / OPEN SPACE AREA #1 4.08 AC.  
 INDIGENOUS / OPEN SPACE AREA #2 3.96 AC.  
 TOTAL OPEN SPACE = 16.15 AC.

**PROVIDED INDIGENOUS:**

INDIGENOUS / OPEN SPACE AREA #1  
 0.06 AC. (NO CREDIT)  
 3.34 AC. (WITH 10% CREDIT)  
 INDIGENOUS / OPEN SPACE AREA #1 TOTAL = 3.40 AC. (WITH CREDIT)

INDIGENOUS / OPEN SPACE AREA #2  
 0.03 AC. (NO CREDIT)  
 5.14 AC. (WITH 50% CREDIT)  
 INDIGENOUS / OPEN SPACE AREA #2 TOTAL = 5.17 AC. (WITH CREDIT)

TOTAL PROVIDED = 9.12 AC.



**DELISI FITZGERALD, INC.**  
 Planning - Engineering - Project Management

Florida Certificate of Authorization  
 Engineering LB # 26978

1605 Hendry Street  
 Fort Myers, FL 33901  
 (239) 418-0691  
 (239) 418-0692 fax

**ENGINEER OF RECORD:**  
 JOHN T. WOODAK, P.E. (FOR THE FIRM)  
 FLORIDA P.E. NO. 58217

NOT VALID WITHOUT SEAL, SIGNATURE AND DATE

**OWNER / DEVELOPER:**  
**SD ESTERO CROSSING, LLC**  
 2647 PROFESSIONAL CIRCLE, SUITE 1201  
 NAPLES, FL 34119  
 (239) 992-7344

**PROJECT:**  
**ESTERO CROSSING**

PLAN REVISIONS	
#	DESCRIPTION

**OPEN SPACE & INDIGENOUS PLAN**

Project Manager:	JTW
Drawn By:	CAS
Checked By:	JTW
Project Number:	21315
Part of Section(s):	35
Township:	46 S Range: 25 E
County, State:	LEE COUNTY, FL

K:\21315 - ESTERO CROSSING\ZONING\INDIGENOUS - OPEN SPACE EXHIBIT\21315-01-INDIGENOUS-PLAN.DWG  
 9/25/2019 11:26 AM