



US-41 Beautification Grants

David Willems, PE

Summary

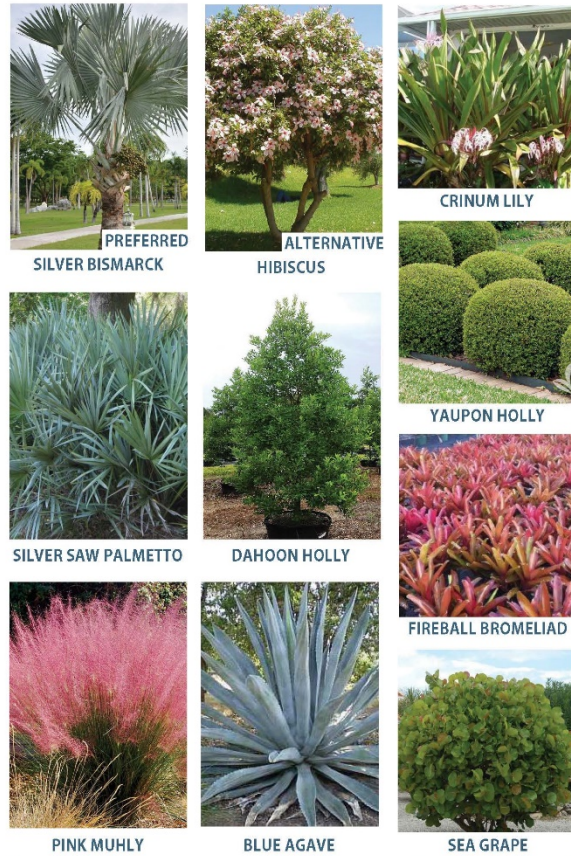
- Council Approved Grant Applications at Sept 18th Council Meeting
- Will provide up to \$100,000 at each of two locations along US-41
- Potential first step in FDOT allowing more trees along the entire corridor

Locations

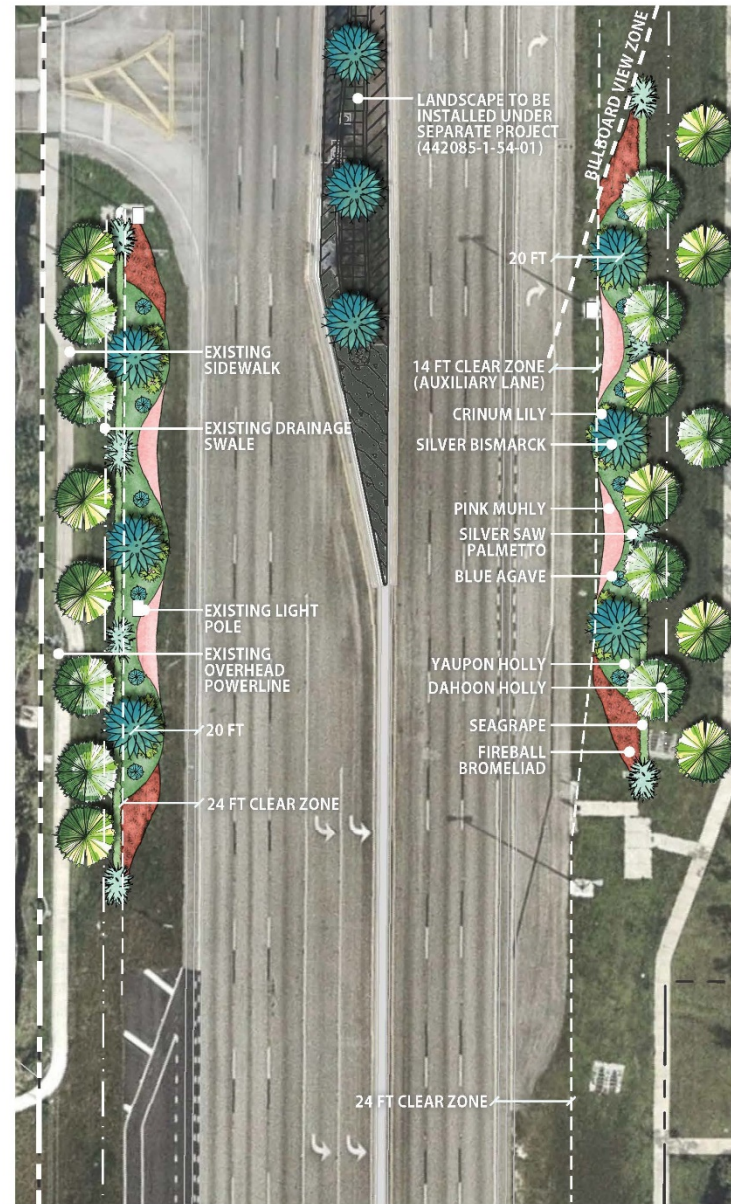




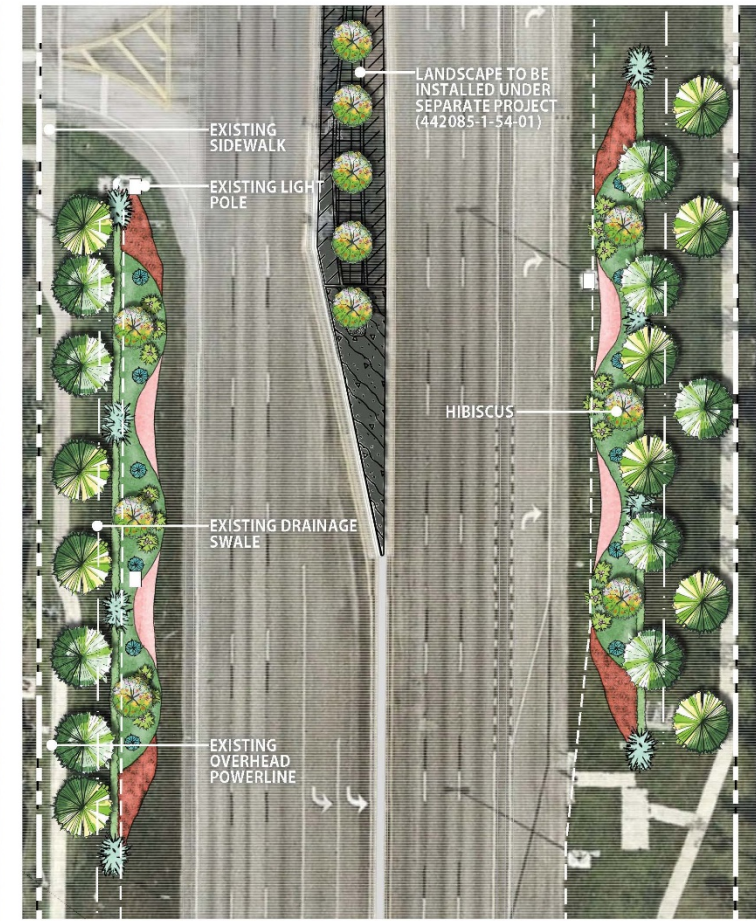
KEY MAP



PLANTING PALLET



NORTH GATEWAY: PREFERRED OPTION



**NORTH GATEWAY: ALTERNATE OPTION
(SUBSTITUTION OF BISMARCK PALMS FOR STANDARD FORM HIBISCUS)**

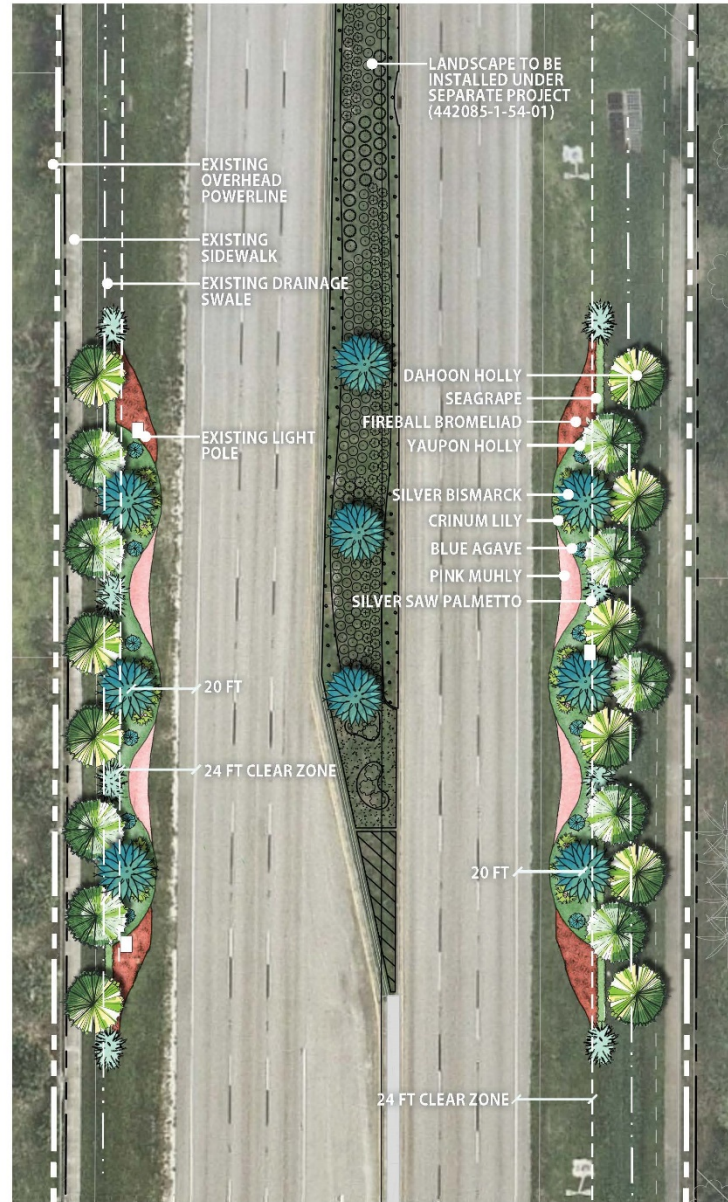
Plantings proposed under this grant application are intended to supplement landscape enhancements being installed in the medians of US 41 as part of project 442085-1-54-01. While current design criteria prohibited the planting of trees in the medians of US 41 as part of the median enhancements, this application serves to provide a gateway planting installation at the boundary of the Village of Estero to accomplish a goal of the median improvement project that was not feasible based on the direct application of FDM criteria. This application includes two concepts, a Preferred Option and an Alternate Option. The Preferred Option would require variance approval or permission from FDOT to locate Bismarck palms at 20' from the travel/auxiliary lanes, which would encroach inside the clear zone in some locations by 4'. Existing drainage swales dictate that these palms cannot be installed outside the clear zone. An alternate plan is being included with this application that conforms to all FDM criteria that could be installed without a variance. It would be the Village's desire to seek approval for the Preferred Option to establish a strong gateway into the Village along the US 41 corridor. A separate application has been submitted for consideration for a second gateway planting at the opposite end of US 41 that define the Village boundaries.



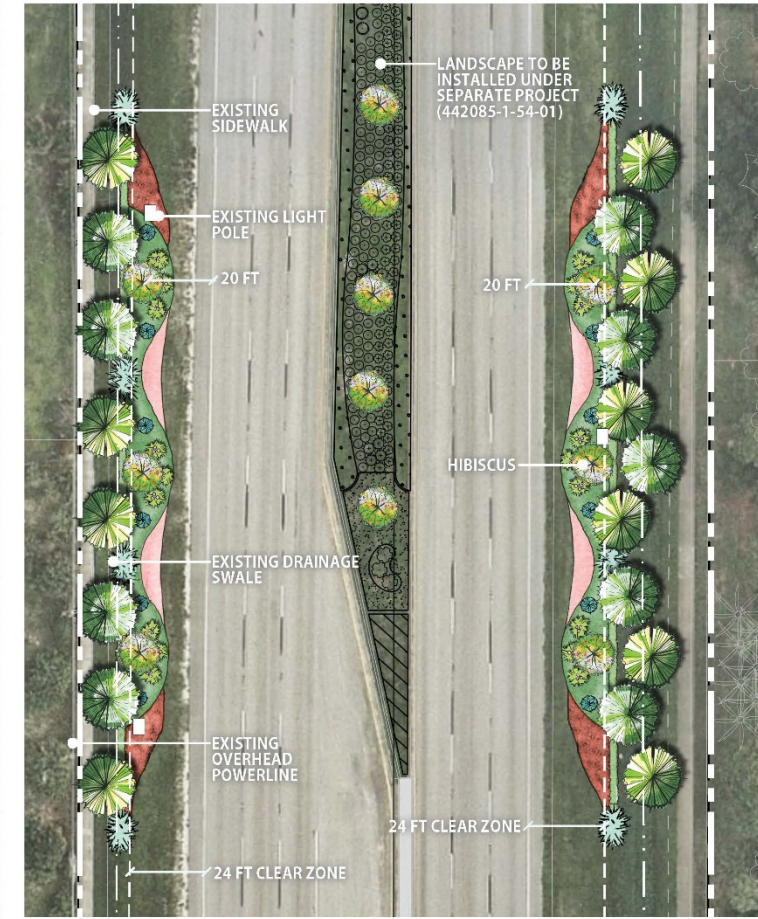
KEY MAP



PLANTING PALLET



SOUTH GATEWAY: PREFERRED OPTION



**SOUTH GATEWAY: ALTERNATE OPTION
(SUBSTITUTION OF BISMARCK PALMS FOR STANDARD FORM HIBISCUS)**

Plantings proposed under this grant application are intended to supplement landscape enhancements being installed in the medians of US 41 as part of project 442085-1-54-01. While current design criteria prohibited the planting of trees in the medians of US 41 as part of the median enhancements, this application serves to provide a gateway planting installation at the boundary of the Village of Estero to accomplish a goal of the median improvement project that was not feasible based on the direct application of FDM criteria. This application includes two concepts, a Preferred Option and an Alternate Option. The Preferred Option would require variance approval or permission from FDOT to locate Bismarck palms at 20' from the travel/auxiliary lanes, which would encroach inside the clear zone in some locations by 4'. Existing drainage swales dictate that these palms cannot be installed outside the clear zone without a variance. An alternate plan is being included with this application that conforms to all FDM criteria that could be installed without a variance. It would be the Village's desire to seek approval for the Preferred Option to establish a strong gateway into the Village along the US 41 corridor. A separate application has been submitted for consideration for a second gateway planting at the opposite end of US 41 that define the Village boundaries.

Questions?

