

BUILDING COLORS

SW 6091 RELIABLE WHITE	SW 6086 SAND DUNE	SW 6088 NUTHATCH	SW 6136 HARMONIC TAN
BORAL CASA GRANDE BLEND			
TILE ROOF COLOR			
SW ALL SURFACE ENAMEL ANTIQUE BRONZE			
AWNING / TRELLIS / BRACKET COLOR			

ARCHITECTURAL DESIGN TREATMENTS
ARCHITECTURAL DESIGN TREATMENTS ARE COMPLIANT WITH THE FOLLOWING REQUIREMENTS PER LCLDC SECTION 33-330 AND 10-620(c)(2)(b)

REQUIRED (3 MINIMUM)	PROVIDED
a. AWNINGS OR ATTACHED CANOPIES	FRONT, RIGHT, REAR, LEFT
b. OVERHANGS	REAR
c. PORTICOS	FRONT, RIGHT, LEFT
d. ARCADES, MINIMUM OF EIGHT FEET CLEAR IN WIDTH	N/A
e. PEAKED ROOF FORMS	FRONT, RIGHT, LEFT
f. DISPLAY WINDOWS ALONG A MINIMUM OF 50% OF FRONT WALLS AND ANY OTHER WALL ALONGSIDE A PEDESTRIAN WALKWAY	N/A
g. CLOCK OR BELL TOWERS	N/A
h. OTHER TREATMENTS (TRELLIS, DECORATIVE TILES, FAUX WINDOWS WITH AWNINGS FOR HUMAN SCALE)	FRONT, RIGHT, REAR, LEFT

*ALL PRIMARY FACADES ARE DESIGNED WITH CONSISTENT ARCHITECTURAL STYLE, DETAIL, AND TRIM FEATURES PER LCLDC SECTION 10-620(c)(2)(e).

FACADE DESIGN - BLANK WALL AREAS
FACADE DESIGN IS COMPLIANT WITH THE FOLLOWING REQUIREMENTS PER LCLDC SECTION 10-620(e)(1)

REQUIRED (3 MINIMUM)	PROVIDED
a. TEXTURE CHANGE	FRONT, RIGHT, REAR, LEFT
b. MATERIAL CHANGE	FRONT, RIGHT, REAR, LEFT
c. ARCHITECTURAL FEATURES: *BANDING, BAYS, REVEALS, OFFSETS, OR PROJECTING RIBS	FRONT, RIGHT, REAR, LEFT
d. BUILDING SETBACKS OR *PROJECTIONS	FRONT, RIGHT, REAR, LEFT
e. PATTERN CHANGE	FRONT, RIGHT, REAR, LEFT

FACADE MATERIALS
FACADE MATERIALS ARE COMPLIANT WITH THE FOLLOWING REQUIREMENTS PER LCLDC SECTION 10-620(e)(2)(a)

PERMITTED	PROVIDED
1. PLASTIC OR VINYL SIDING	0%
2. CORRUGATED OR REFLECTIVE METAL PANELS	0%
3. TILE (EXCLUDING ROOFS)	0%
4. SMOOTH, SCORED OR RIB FACED CONCRETE BLOCK	0%
5. TRANSLUCENT MATERIALS OTHER THAN GLASS	0%

*PER SECTION 10-260(e)(2)(b), BUILDING TRIM AND ACCENT AREAS ARE 10% OR LESS AND TRIM WIDTH IS LESS THAN 24" (MAX) ON ALL FACADES

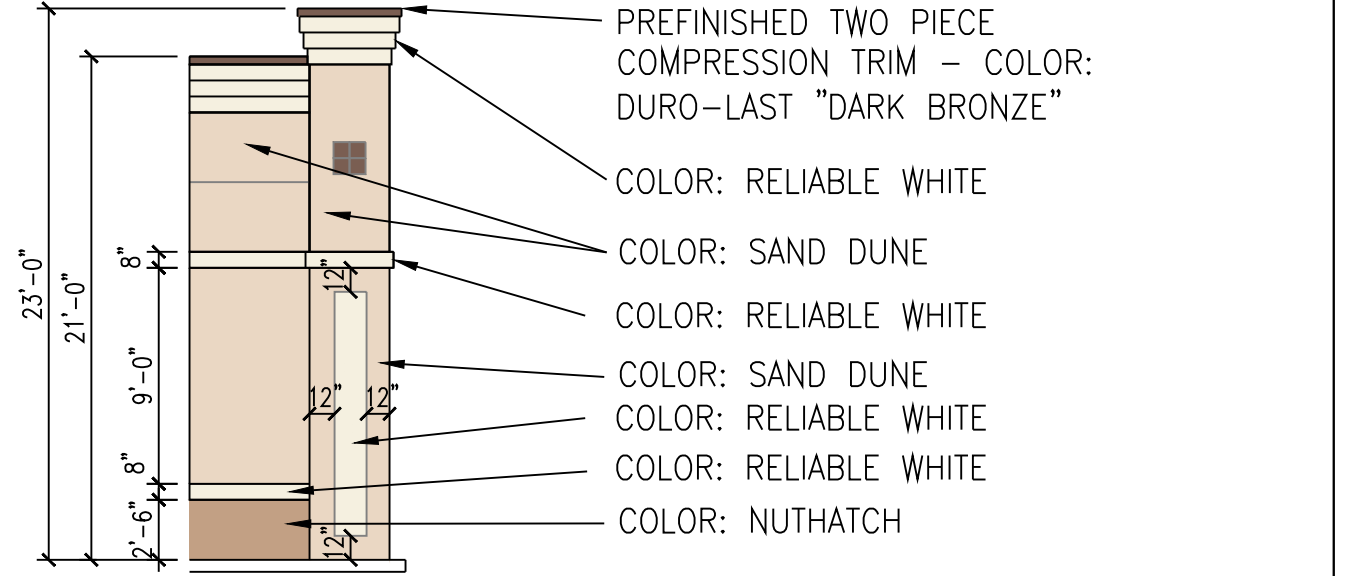
ADDITIONAL ROOF REQUIREMENTS
ROOF TREATMENTS ARE COMPLIANT WITH THE FOLLOWING REQUIREMENTS PER LCLDC SECTION 10-620(d)(1,2,3)

REQUIRED (2 MINIMUM)	PROVIDED
a. PARAPETS USED TO CONCEAL ROOF TOP EQUIPMENT AND FLAT ROOFS	FRONT, RIGHT, REAR, LEFT
b. THREE OR MORE ROOF SLOPE PLANES PER PRIMARY FACADE	N/A
c. SLOPING ROOFS, WHICH DO NOT EXCEED THE AVERAGE HEIGHT OF THE SUPPORTING WALLS, MUST HAVE AN AVERAGE SLOPE EQUAL TO OR GREATER THAN 4V:12H BUT NOT GREATER THAN 12V:12H	FRONT, RIGHT, LEFT
d. ADDITIONAL VERTICAL ROOF CHANGES WITH A MINIMUM CHANGE IN ELEVATION OF TWO FEET (FLAT ROOFS MUST HAVE A MINIMUM OF TWO CHANGES)	FRONT, RIGHT, REAR, LEFT
e. THREE DIMENSIONAL CORNICE TREATMENT WHICH MUST BE A MINIMUM OF TEN INCHES IN HEIGHT WITH A MINIMUM OF THREE RELIEFS	RIGHT, REAR, LEFT

- PREFINISHED TWO PIECE COMPRESSION TRIM COLOR: DURO-LAST "DARK BRONZE"
- CMU BLOCK W/ STUCCO FINISH - COLOR: SW6369 "TASSEL"
- WALL MOUNTED LIGHT FIXTURE - BRONZE FINISH
- PIPE GUARD WITH ARCHITECTURAL BROWN SLEEVE
- MFG. WHITE EXTERIOR INSULATED FINISH. COLOR: SW 6091 "RELIABLE WHITE"
- PAINT MAN DOOR SW 6088 "NUTHATCH" METAL FRAMES SW 6088 NUTHATCH
- OVERHEAD DOOR - DO NOT PAINT - PAINT ANGLES SW 6088 "NUTHATCH"
- EXPANSION JOINT
- ALUMINUM STOREFRONT SYSTEM - BRONZE FINISH - TINTED GLASS WINDOWS
- GLASS AND ALUMINUM DOORS - CLEAR ANODIZED FINISH
- CMU BLOCK W/ STUCCO FINISH - SEE PAINT SCHEME DETAIL THIS SHEET
- DECORATIVE FOAM CORNICE - COLOR: SW 6091 "RELIABLE WHITE"
- TOILET WALL VENTS PAINT TO MATCH WALL
- STORE ADDRESS - 6" WHITE REFLECTIVE NUMBERS
- 3'-4" WIDE CMU PILASTER (8" PROJECTION)
- 3'-4" WIDE x 3'-4" DEPTH CMU COLUMN
- FRONT WALL SIGN - 40" HIGH RED CHANNEL LETTERS & ORANGE STRIPES
- HVAC UNITS SCREENED BEHIND PARAPET WALL
- 8" HIGH X 2" DEPTH FOAM BOARD TRIM W/ E.F.S.
- 1" WIDE SCORED JOINT (TYP.)
- LEFT SIDE WALL SIGN - 40" RED CHANNEL LETTERS
- 4" H. X 12" W. OVERFLOW SCUPPER. FLOWLINE 2" ABOVE ROOF.
- WOOD CORNICE BRACKETS - COLOR: SHERWIN WILLIAMS "ANTIQUE BRONZE"
- BORAL ROOF TILE: VILLA 900 - COLOR: CASA GRANDE BLEND
- (4) 8" X 8" GLAZED CERMIC TILE MEDALLION - COLOR: DARK BRONZE
- METAL TRELLIS - COLOR: SHERWIN WILLIAMS "ANTIQUE BRONZE"
- 2'-0" WIDE X 1'-4" DEPTH CMU COLUMN W/ STUCCO FINISH
- CMU BLOCK W/ STUCCO FINISH - COLOR: SW6136 "HARMONIC TAN"
- 3'-0" HIGH X 3'-0" DEPTH METAL STANDING SEAM AWNING COLOR: DARK BONZE
- RIGHT SIDE WALL SIGN - 40" HIGH RED CHANNEL LETTERS & ORANGE STRIPES
- ALUMINUM STOREFRONT - BRONZE FINISH - TINTED OPAGUE GLASS FAUX WINDOWS
- 4" HIGH X 2" DEPTH FOAM BOARD TRIM W/ E.F.S.

1 ELEVATION KEY NOTES

COLORS:
 SHERWIN WILLIAMS "RELIABLE WHITE" - SW 6091
 SHERWIN WILLIAMS "SAND DUNE" - SW 6086
 SHERWIN WILLIAMS "NUTHATCH" - SW 6088
 SHERWIN WILLIAMS "TASSEL" - SW6369
 SHERWIN WILLIAMS "HARMONIC TAN" - SW6136



- 2 EXTERIOR WALL COLOR SCHEME**
- GENERAL NOTES:
- REFER TO SECTIONS 09800 AND 09900 OF THE SPECIFICATIONS FOR PAINT AND EXTERIOR COATINGS.
 - PAINT RESTROOM WALL VENTS TO MATCH THE ADJACENT WALL COLOR.
 - SEALANT AT EXPANSION JOINTS TO MATCH ADJACENT WALL COLOR.
 - ALL MASONRY JOINTS TO BE CONCAVE TOOLED.

- 3 GENERAL NOTES**
- SIGNAGE NOTES:
- GENERAL CONTRACTOR SHALL RECIEVE AND INSTALL OWNER FURNISHED WALL MOUNTED SIGN IN THE LOCATIONS INDICATED ON THE DRAWINGS. SIGN IS INTERNALLY ILLUMINATED.
 - CONTRACTOR SHALL BE RESPONSIBLE FOR OBTAINING ALL REQUIRED PERMITS.
 - INSTALL SIGN AND ANCHORAGE IN ACCORDANCE WITH ATTACHED SIGN MANUFACTURER'S DRAWINGS. SEE SN-1
 - SEE SHEET E3 FOR LOCATIONS OF J-BOXES TERMINATING EACH WALL SIGN CIRCUIT.

VILLAGE OF ESTERO - ARCHITECTURAL DESIGN FEATURES:

THE BUILDING EXHIBITS A MEDITERRANEAN STYLE THROUGH THE USE OF SLOPED BARREL TILE ROOFS WITH VARYING ROOF HEIGHTS, STUCCO FINISHED WALLS IN EARTH TONE COLORS, AND A CLEARLY DEFINED COVERED ENTRYWAY. VARIOUS BUILDING ORNAMENTS ARE PROVIDED WHICH INCLUDE ARCHED BANDING, DECORATIVE TILE ACCENTS, DECORATIVE METAL TRELLISES, AWNINGS OF COMPATIBLE COLORS, FAUX WINDOWS WITH SILLS, DECORATIVE WALL MOUNTED LIGHTING, AND ARTICULATED CORNICES AND PARAPETS. AN ASSORTMENT OF DESIGN TREATMENTS ARE USED TO DISTINGUISH EACH FACADE SECTION AND GIVE AN APPEARANCE OF INDEPENDENT FACADES. THE DESIGN ALSO PROVIDES FOR FOUNDATION LANDSCAPING TO COMPLIMENT BUILDING FACADES INCLUDING JASMINE VINES CLIMBING EACH DECORATIVE METAL TRELLIS.

EXTERIOR WALL ELEVATIONS

AUTOZONE STORES LLC
 123 South Front St, 3rd Floor
 Memphis, Tennessee 38103
 TEL: (901) 495-8701 FAX: (901) 495-8969

AutoZone STORE DEVELOPMENT
 Prepared For: Store No. 6874
 10250 ARCOS AVENUE
 ESTERO, FL 33928

COLOR ELEVATIONS

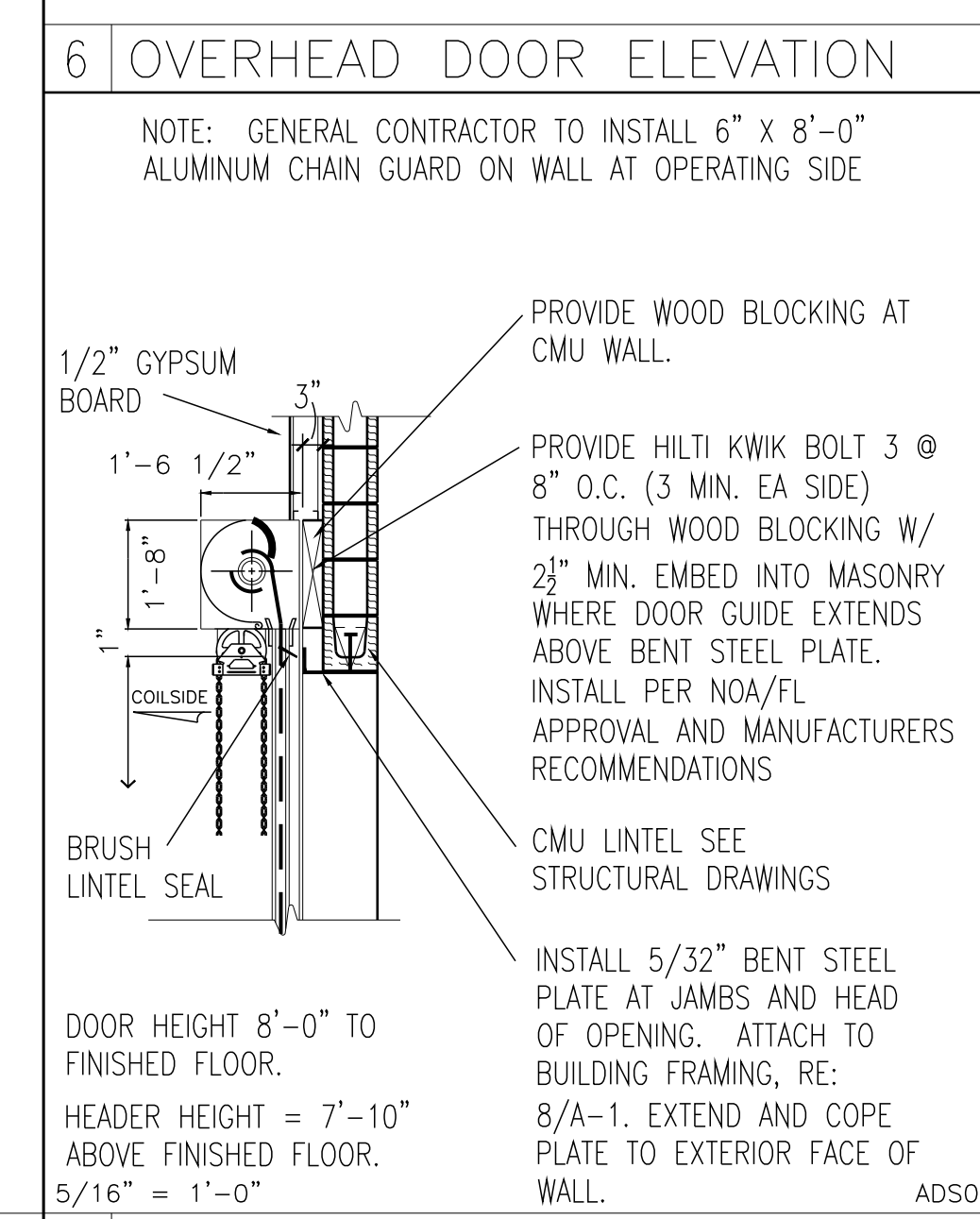
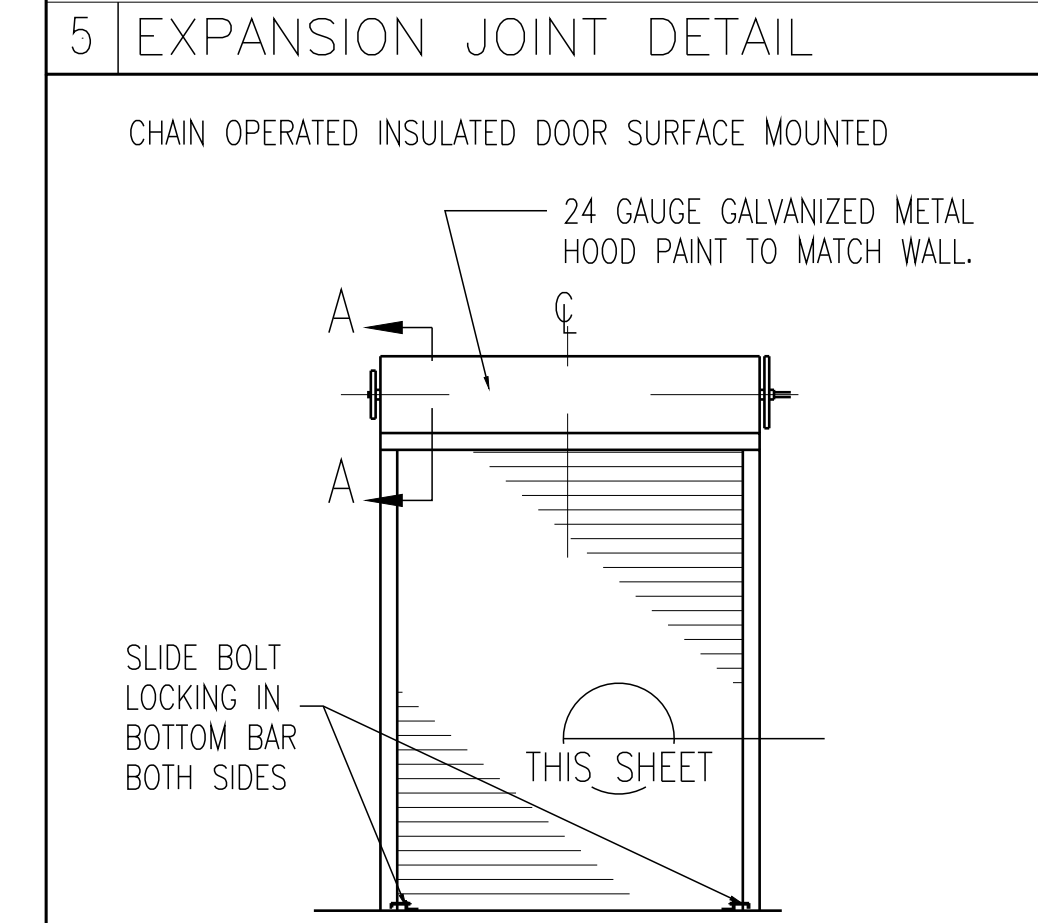
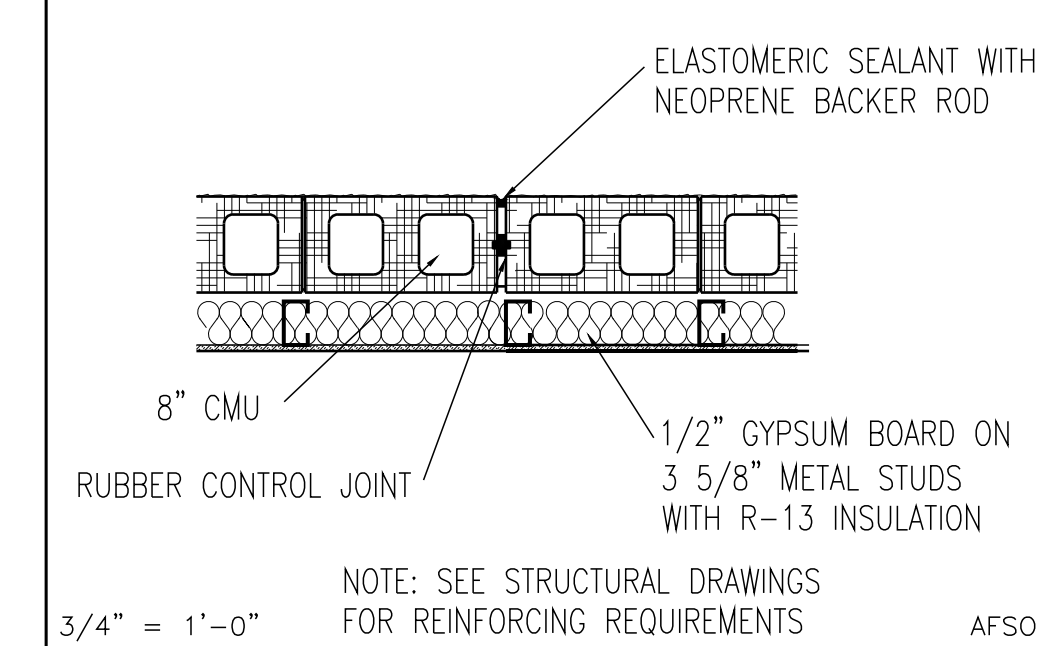
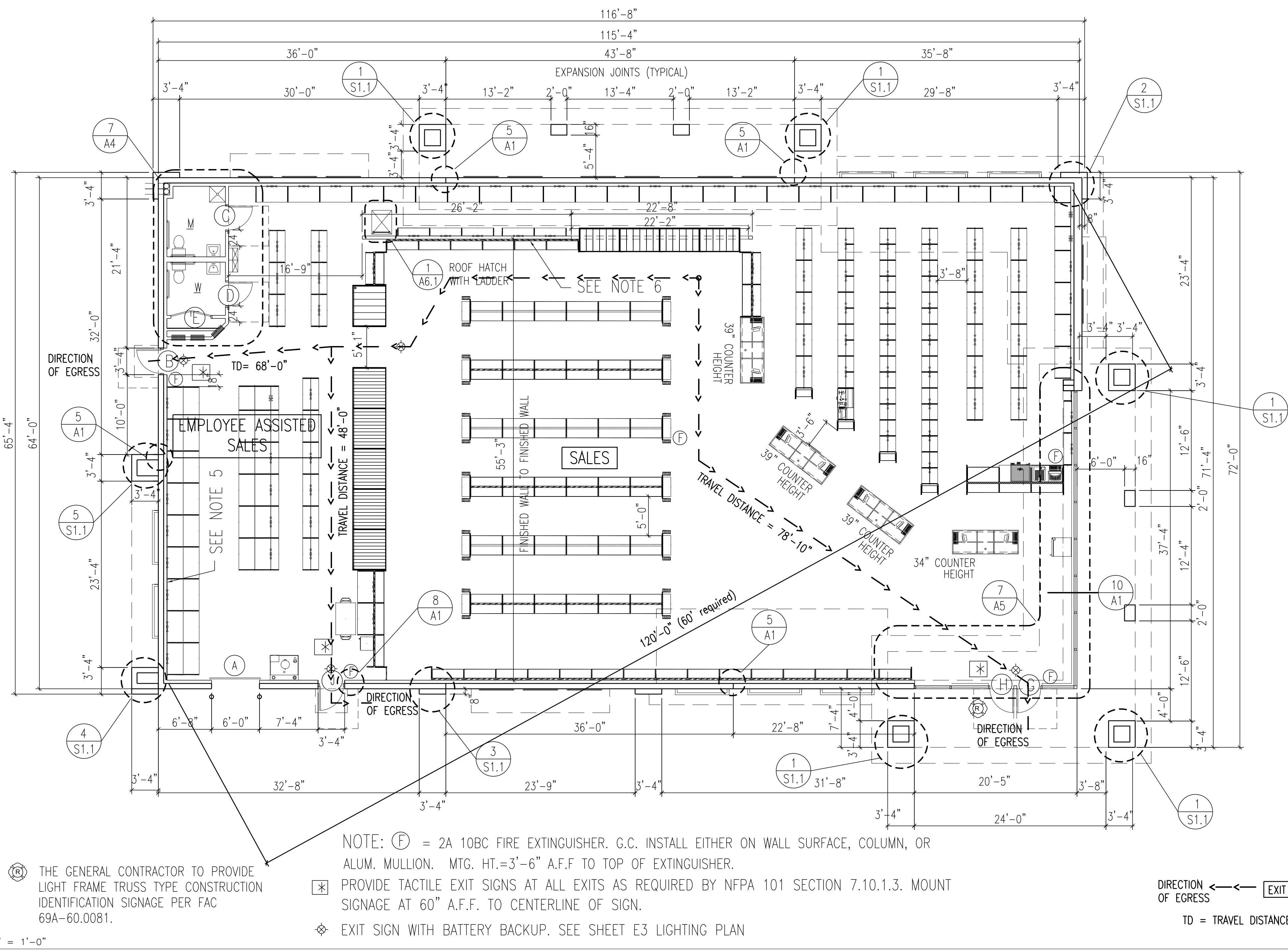
SCALE: 1/8" = 1'-0"

REVISIONS

1.	
2.	
3.	
4.	

DATE: 02/20/19
 PROTOTYPE SIZE: 7N2

CE



1/8" = 1'-0"
FLOOR PLAN

- REFER TO STRUCTURAL DRAWINGS FOR ALL DETAILS AND REQUIREMENTS REGARDING FOUNDATIONS, WALL REINFORCING, BOND BEAMS, LINTELS, AND ROOF FRAMING.
- REFER TO CIVIL DRAWINGS FOR LOCATIONS AND DETAILS OF SIDEWALKS, PIPE GUARDS, ETC., AS WELL AS FINISH FLOOR ELEVATION AND EXTERIOR FINISHED GRADES AROUND THE BUILDING.
- INSTALL 6" WIDE, 20 GAUGE GALVANIZED SHEET METAL STRIP BETWEEN THE BACK OF THE GYPSUM BOARD AND THE FACE OF THE METAL STUD AROUND THE ENTIRE PERIMETER OF THE BUILDING, AS WELL AS BOTH SIDES OF THE CURTAIN WALL. TOP OF STRIP TO BE 93" ABOVE FINISHED FLOOR. REFER TO SHEET A-4 FOR DETAILS OF CURTAIN WALL.
- SEE SHEET P-1 FOR LOCATION OF NON FREEZE YARD HYDRANT AND INSTALLATION REQUIREMENTS.
- INSTALL 1/2" X 4'-0" X 8'-0" AC PLYWOOD HORIZONTALLY WITH THE LONG EDGE ON THE FLOOR AND THE END JOINT CENTERING ON A STUD. APPLY PLYWOOD TO THE FACE OF GYPSUM BOARD WITH SCREWS TO FACILITATE FUTURE REPLACEMENT. SEE INTERIOR ELEVATIONS SEE 3/4A DETAIL.
- SEE SPECIFICATIONS FOR INFORMATION ON ITEMS NOT COMPLETELY DELINEATED ON THE DRAWINGS.

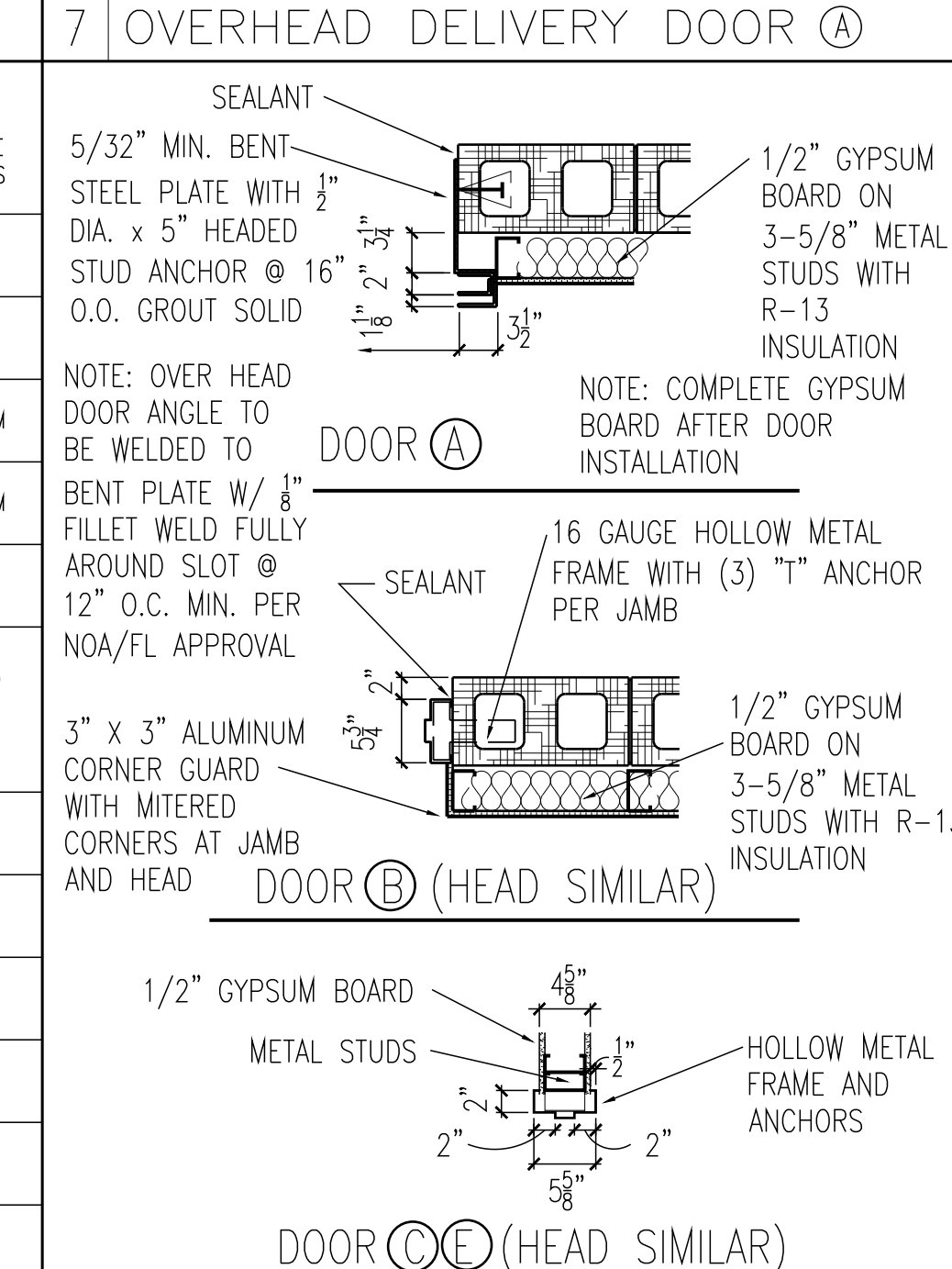
1/8" = 1'-0"
2 FLOOR PLAN NOTES

LOCATION	FLOOR	BASE	WALLS	CLG.	REM.
	SEALED CONCRETE	VINYL TILE	VINYL	QUARRY TILE	
			GYPSUM BOARD	FIBER REINFORCED PANELS	METAL DECK
					GYPSUM BOARD
SALES AREA	●	●	●	●	
REST ROOMS	●	●	●	●	

3/16" = 1'-0"
3 ROOM FINISH SCHEDULE

MK	SIZE	TYPE	FRAME	JAMB DETAIL	HEAD DETAIL	ADA / EXIT HARDWARE
A	6'-0" x 8'-0"	STEEL OVERHEAD ROLL-UP	STEEL ANGLE	6:7&8/A1	6:7&8/A1	
B	3'-0" x 7'-0" x 1-3/4"	HOLLOW METAL	HOLLOW METAL	8/A1	8/A1	PUSH BAR EXIT DEVICE WILL HAVE AN INTEGRAL SOUNDER
C	3'-0" x 6'-8" x 1-3/4"	SOLID CORE WOOD UNDERCUT DOOR 1"	HOLLOW METAL	8/A1	8/A1	LEVER HANDLE PRIVACY SETS, CLOSER: LCN #P4041, PLATED FINISH US 260, CLOSER IS PARALLEL ARM AND MOUNTS ON PUSH SIDE OF DOOR
D	3'-0" x 6'-8" x 1-3/4"	SOLID CORE WOOD UNDERCUT DOOR 1"	HOLLOW METAL	8/A1	8/A1	LEVER HANDLE PRIVACY SETS, CLOSER: LCN #P4041, PLATED FINISH US 260, CLOSER IS PARALLEL ARM AND MOUNTS ON PUSH SIDE OF DOOR
E	2'-6" x 6'-8" x 1-3/4"	SOLID CORE WOOD PAIR REQUIRED	HOLLOW METAL	8/A1	8/A1	UNDERCUT DOOR 1" (PAIR REQUIRED)
G	3'-0" x 7'-0" x 1-3/4"	GLASS & ALUMINUM SEE SHEET A-5	ALUMINUM	SEE MANUFACTURER'S SHOP DRAWINGS	SEE MANUFACTURER'S SHOP DRAWINGS	SELF CLOSERS MOUNTED ON THE INSIDE OF BUILDING, CYLINDER LOCKS (KEY OPERATION EXTERIOR AND THUMB TURN INTERIOR), PUSH BARS AND PULLS, SIGN OVER EACH EXIT DOOR TO READ AS FOLLOWS "THIS DOOR TO REMAIN UNLOCKED WHEN BUILDING IS OCCUPIED" 1" HIGH WHITE LETTERS.
H	3'-0" x 7'-0" x 1-3/4"	GLASS & ALUMINUM SEE SHEET A-5	ALUMINUM	SEE MANUFACTURER'S SHOP DRAWINGS	SEE MANUFACTURER'S SHOP DRAWINGS	
J	3'-0" x 7'-0" x 1-3/4"	HOLLOW METAL	HOLLOW METAL	8/A1	8/A1	PUSH BAR EXIT DEVICE
K	3'-0" x 7'-0" x 1-3/4"	HOLLOW METAL	HOLLOW METAL	8/A1	8/A1	PUSH BAR EXIT DEVICE

3/32" = 1'-0"
4 DOOR SCHEDULE - HOLLOW METAL DOORS & FRAMES



3/4" = 1'-0"
8 JAMB DETAILS

REVISIONS	1	2	3	4	5	6

AutoZone Store No. 6874
10250 ARCOS ROAD
ESTERO FL 33928

Architect: George Callow - License #AR0014155
123 South Front Street
Memphis, Tennessee 38103
TEL: 901-495-8705 FAX: (901) 495-8969
For Bidding & Contractor Information Contact:
McGraw - Hill Construction Tel. 615-884-1017
www.construction.com