



Capital Improvement Project – Council Schedule

David Willems, P.E.



Ongoing Projects

- Corkscrew Road
- River Ranch Road
- Corkscrew Rd Traffic Signal
- Monument Signs
- Coconut Rd Intersection Study



Fiscal Year 2020-2021 Projects

- Villages at Country Creek Bypass Swale
- Dry Creek Bed Sediment Removal
- Williams Rd-Atlantic Gulf Drive
- Intersection Safety Study
- Estero on the River Master Plan & Design
- Estero Community Park Master Plan & Design

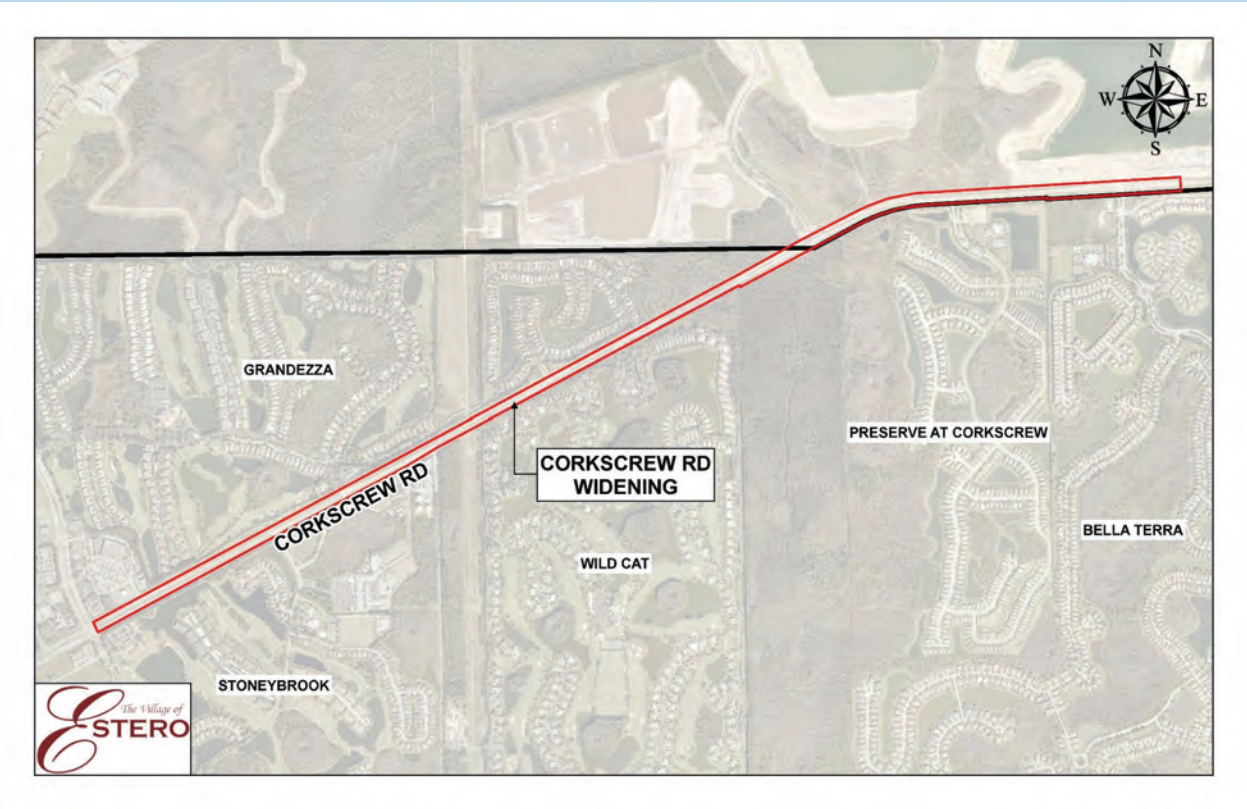


Fiscal Year 2020-2021 Projects

- Williams Road Bike/Ped Improvements
- Sandy Lane Bike/Ped Improvements
- Broadway E Shared Use Path
- Ben Hill Griffin Parkway Landscape Design
- Via Coconut Point Landscape Design



Corkscrew Road



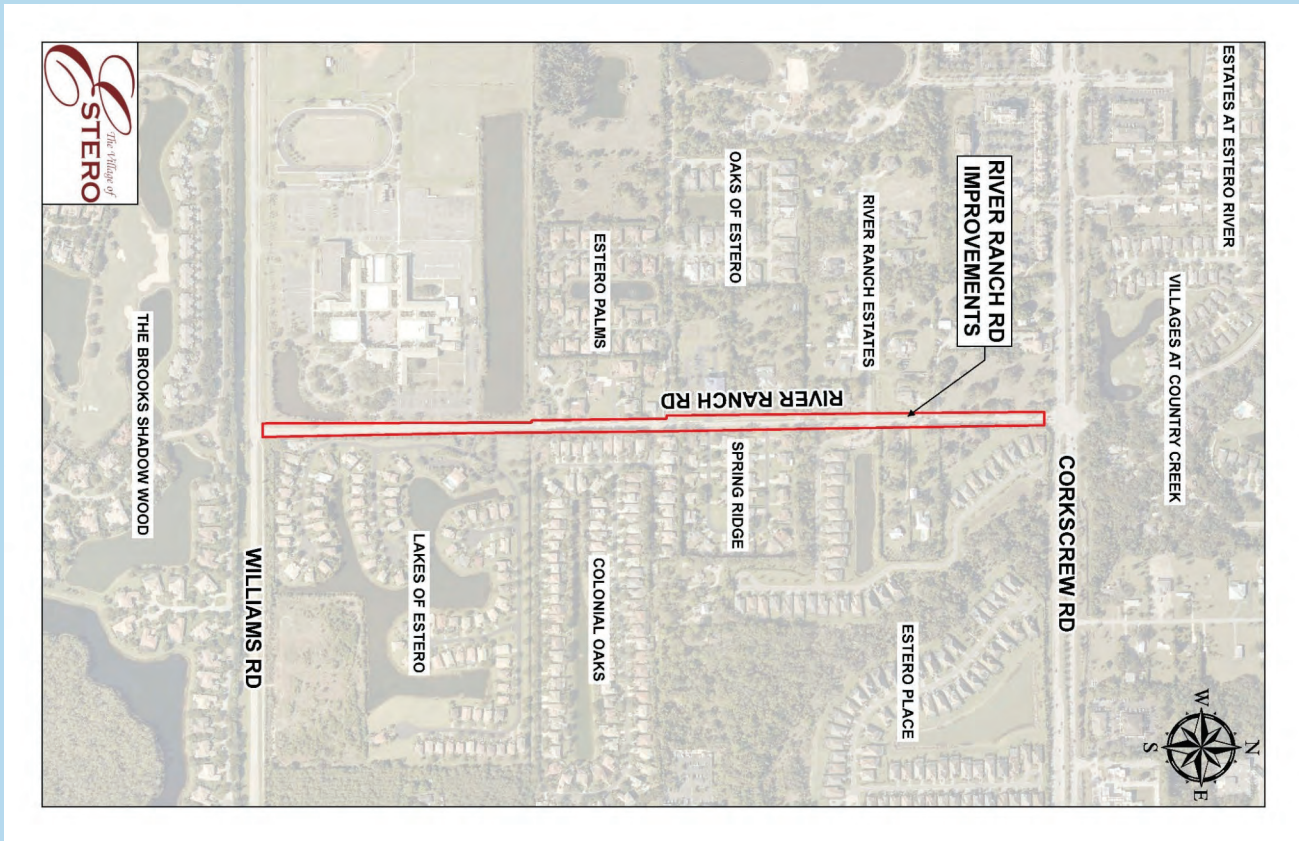


Corkscrew Road

- 10-ft Paths, both sides of road
- Street Lights
- Landscaping



River Ranch Road



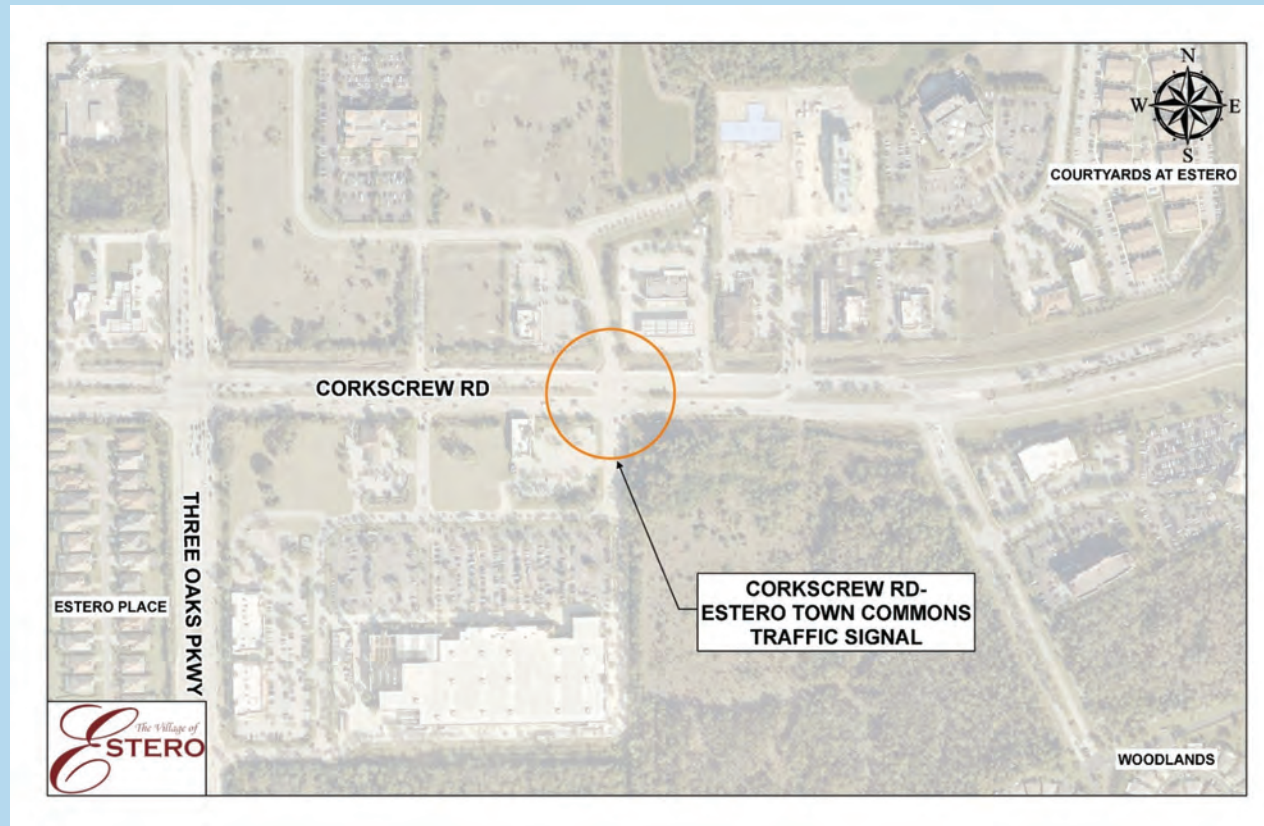


River Ranch Road

- Drainage Improvements
- Roadway Improvements
- Intersection Improvements (Estero High & Williams Road)
- Pedestrian Improvements



Corkscrew Traffic Signal



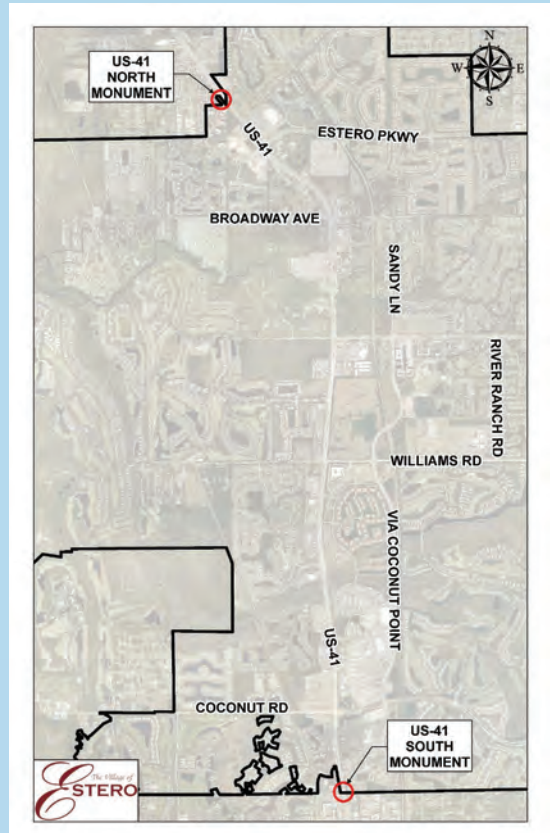


Corkscrew Traffic Signal

- Install Traffic Signal at Corkscrew Road and Puente Lane
- Costs to be reimbursed by adjacent land owners



Monument Signs





Monument Signs

- Install monument signs at entry points in to the Village.
- Three Oaks Parkway and US 41 recommended as first locations

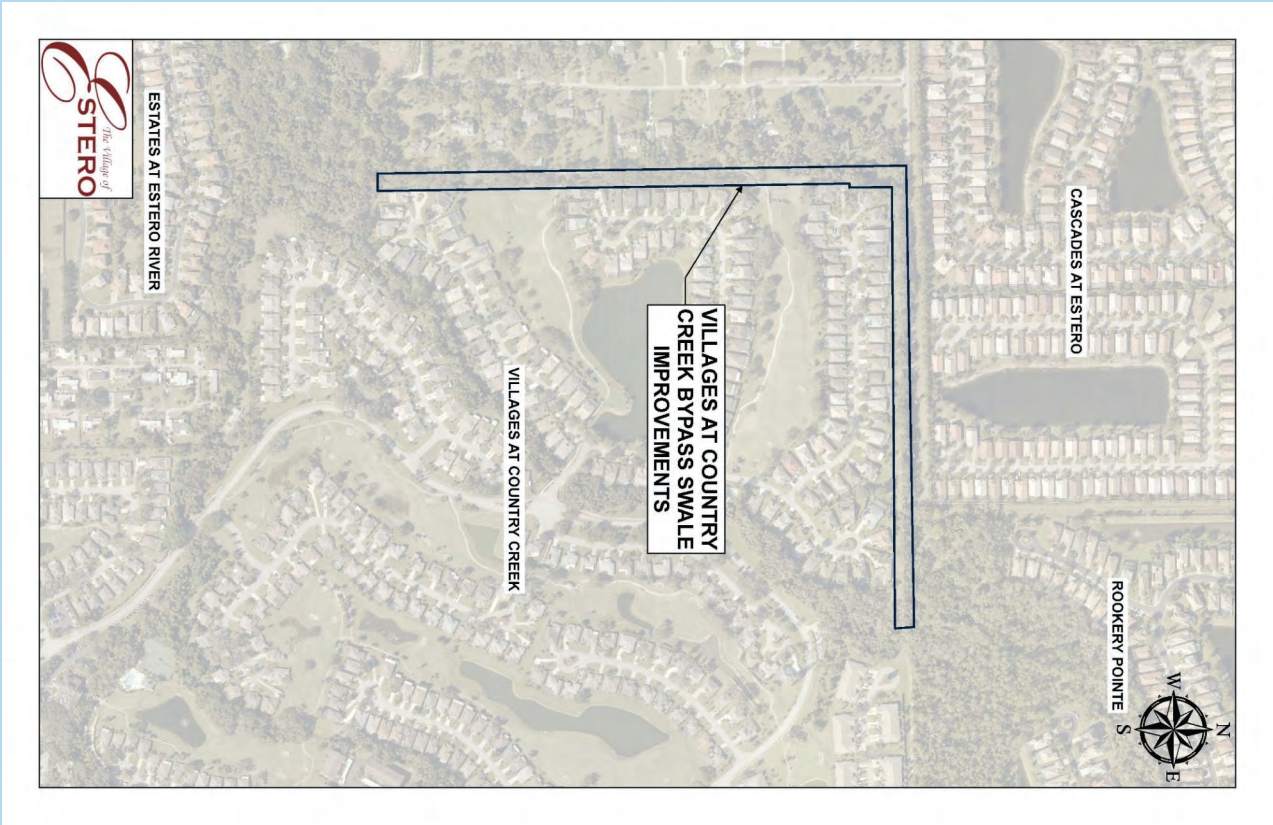


Coconut Rd Intersection Study

- Intersection improvements along Coconut Road, east of US 41



Country Creek Bypass Ditch





Country Creek Bypass Ditch

- Improve swale around Villages at Country Creek
- Requires coordination with Country Creek
- Improve flow into swale
- Improve flow out of swale
- Project could be completed with Dry Creek Bed Project



Dry Creek Bed



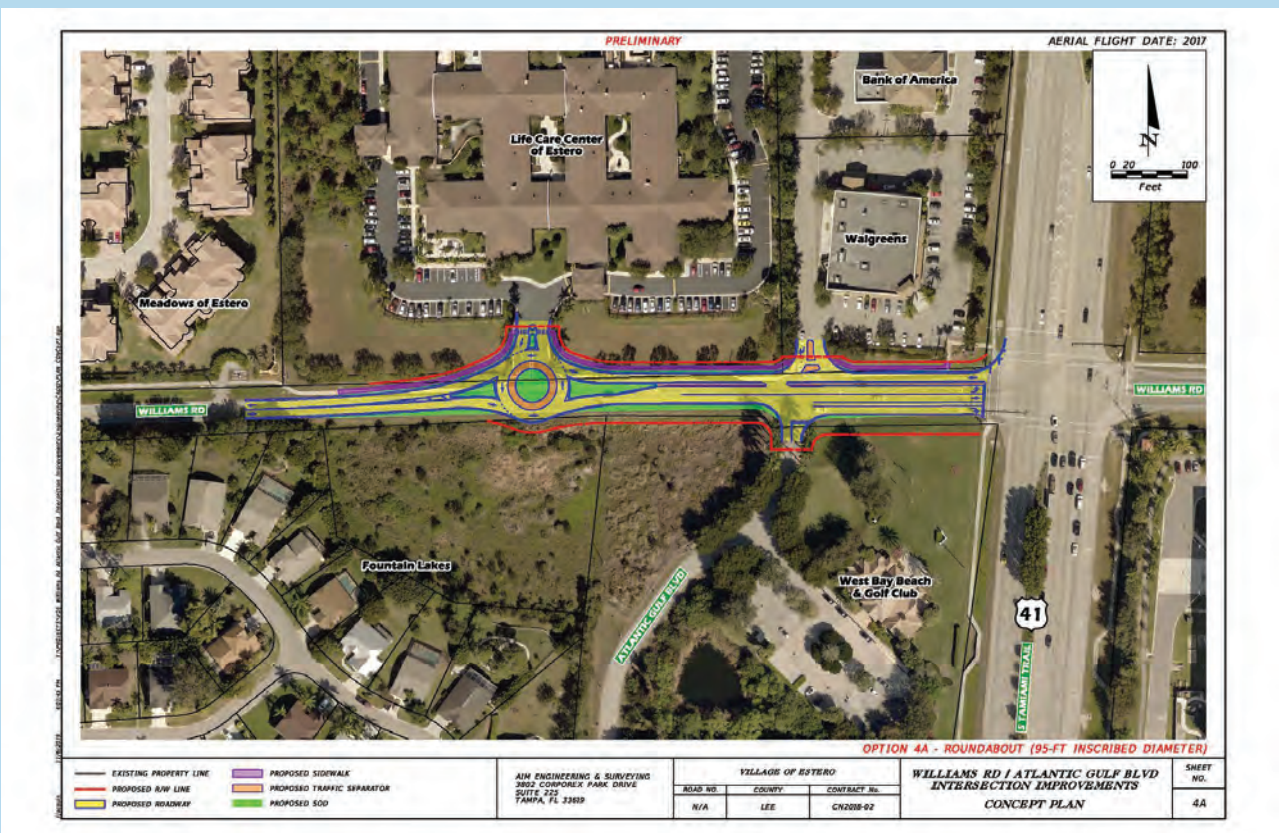


Dry Creek Bed

- Re-establish historical flow patterns by removing sediment from a historic creek bed
- Will allow more water to flow from NB to SB of Estero River
- Project could be completed with Country Creek Bypass Ditch Improvements



Williams Road Atlantic Gulf Drive





Williams Road Atlantic Gulf Drive

Roadway and Intersection Improvements

- Eliminate left turns out of Walgreens & Atlantic Gulf Drive
- Provide alternate turn around
- Improve stacking & traffic flow at US 41

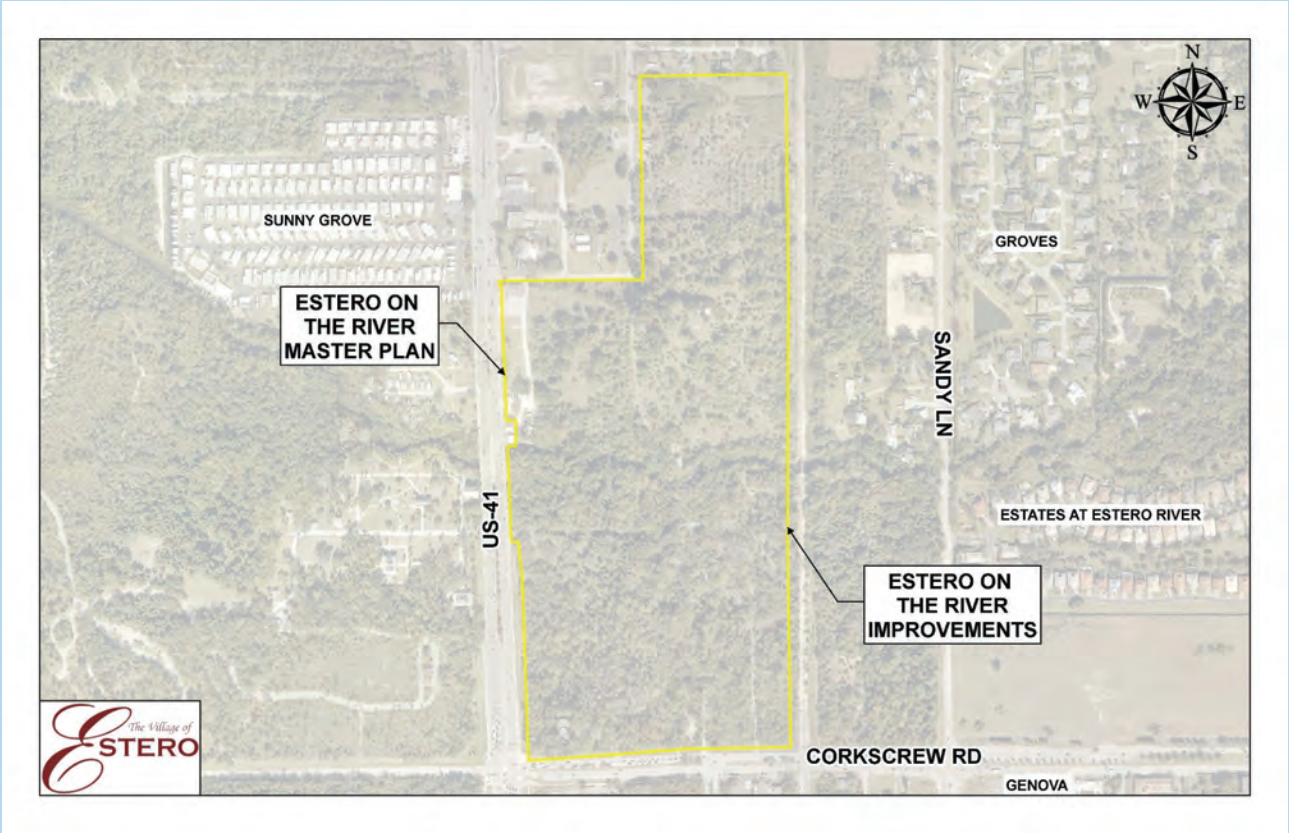


Intersection Safety Study

- Study Bike/Ped Safety at dangerous intersections identified in Bike/Ped Master Plan.
- Intersections generally located along US 41



Estero on the River



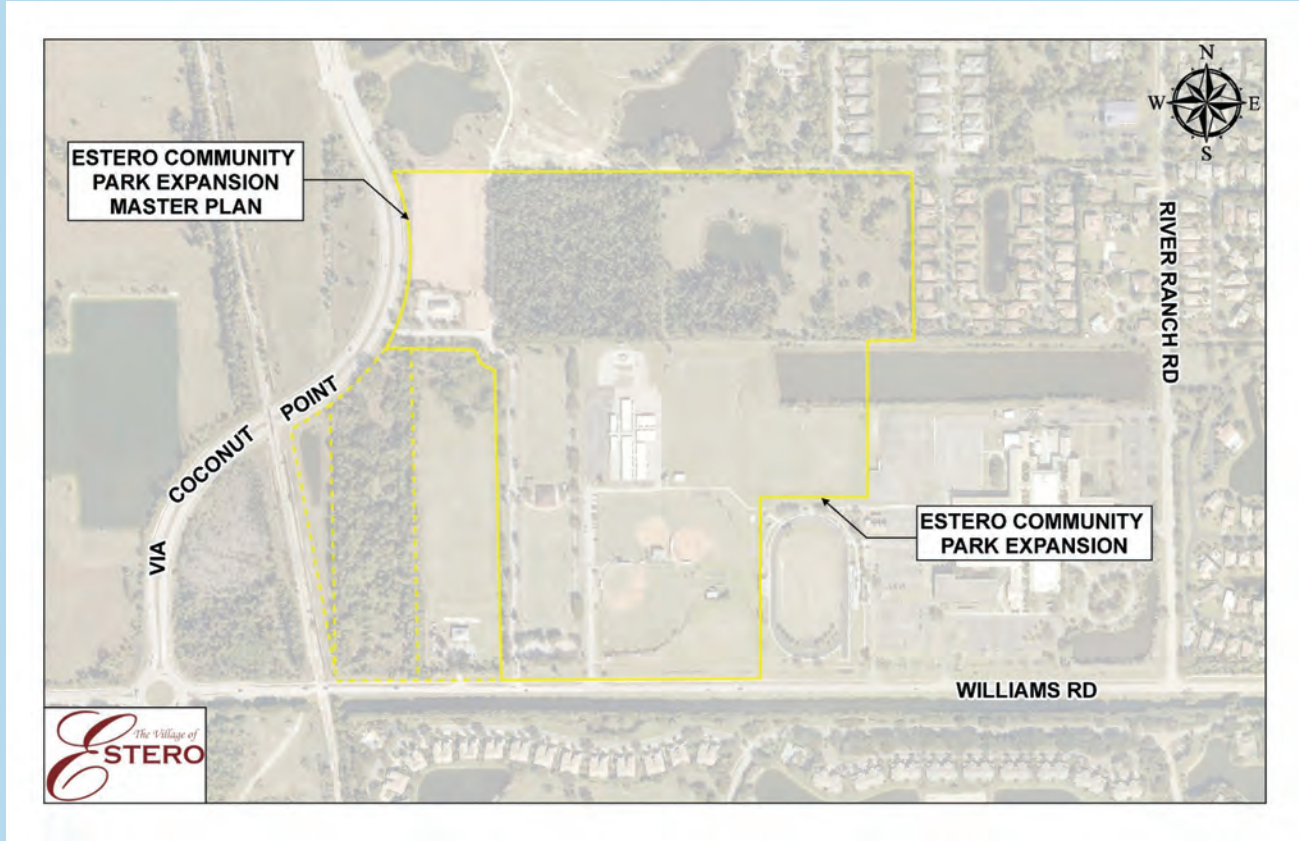


Estero on the River

- Determine the improvements for Estero on the River property
- Design those improvements
- Build those improvements



Estero Community Park



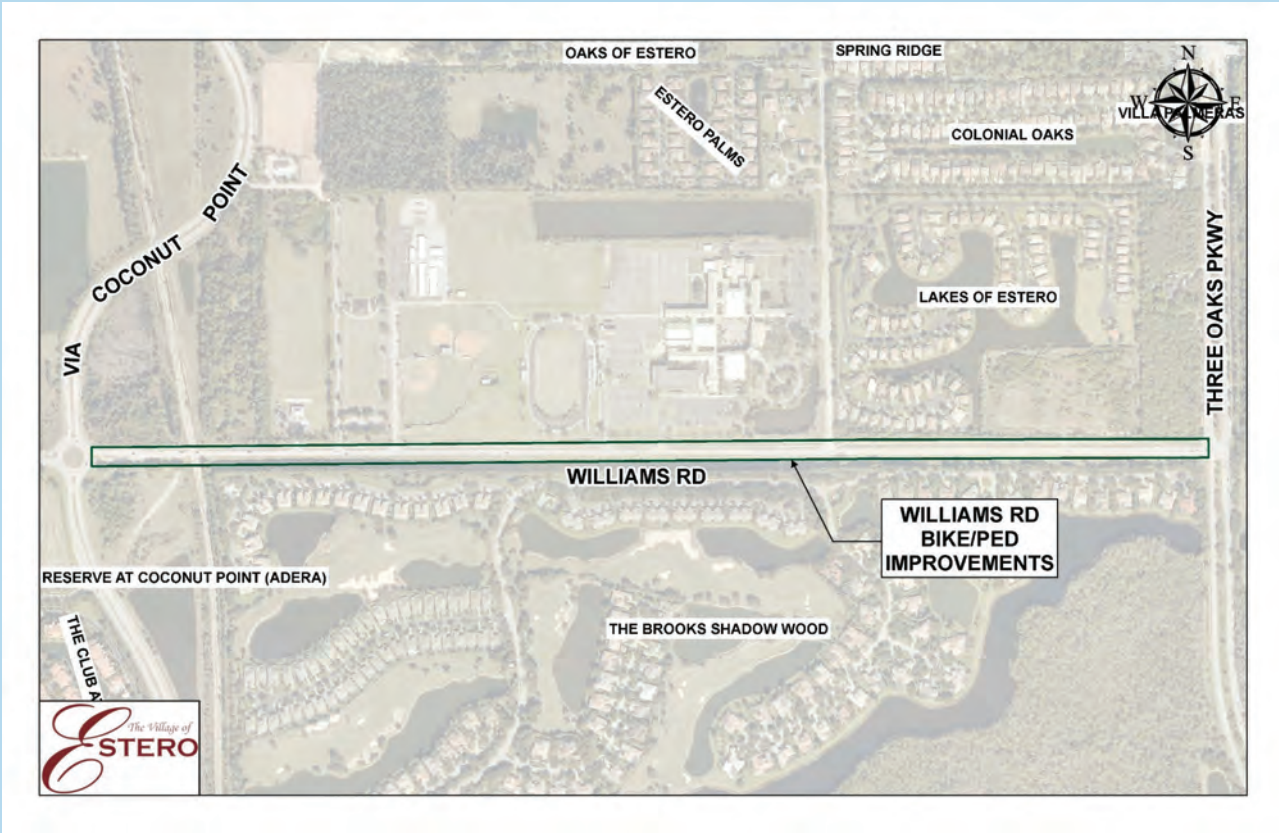


Estero Community Park

- Determine improvements on community park property
- Design those improvements
- Construction those improvements



Williams Rd Bike/Ped



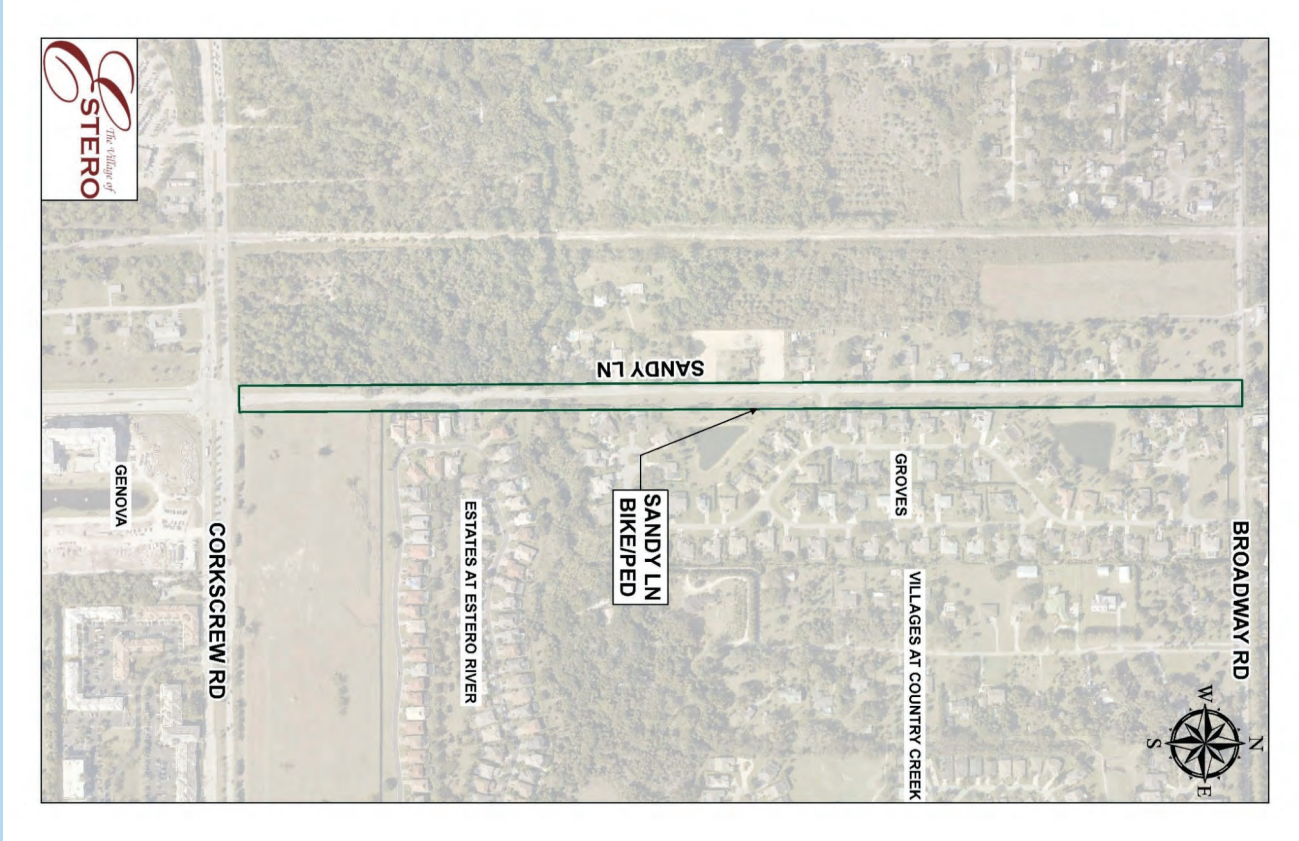


Williams Rd Bike/Ped

- Bike/Ped Master Plan recommended improvements along Williams Road
- This project will first identify the appropriate improvements
- Then design and build them



Sandy Lane Bike/Ped





Sandy Lane Bike/Ped

- Bike/Ped Master Plan recommended improvements along Sandy Lane
- This project will first identify the appropriate improvements
- Project will be completed with Broadway E shared use path



Broadway E Shared Use Path



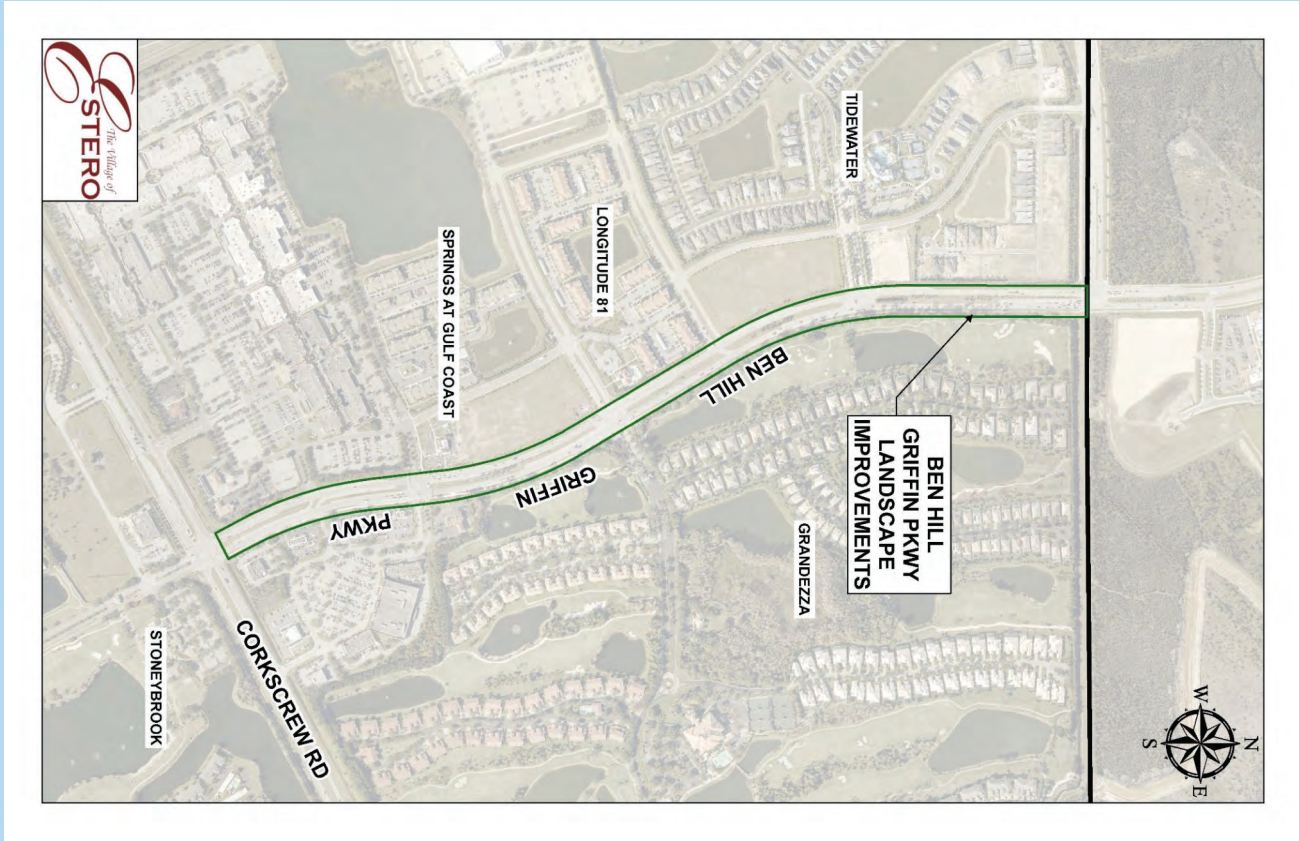


Broadway E Shared Use Path

- Bike/Ped Master Plan recommended improvements along Broadway East
- This project will first identify the appropriate improvements
- Project will be completed with Sandy Lane Bike/Ped



Ben Hill Griffin Pkwy Landscape



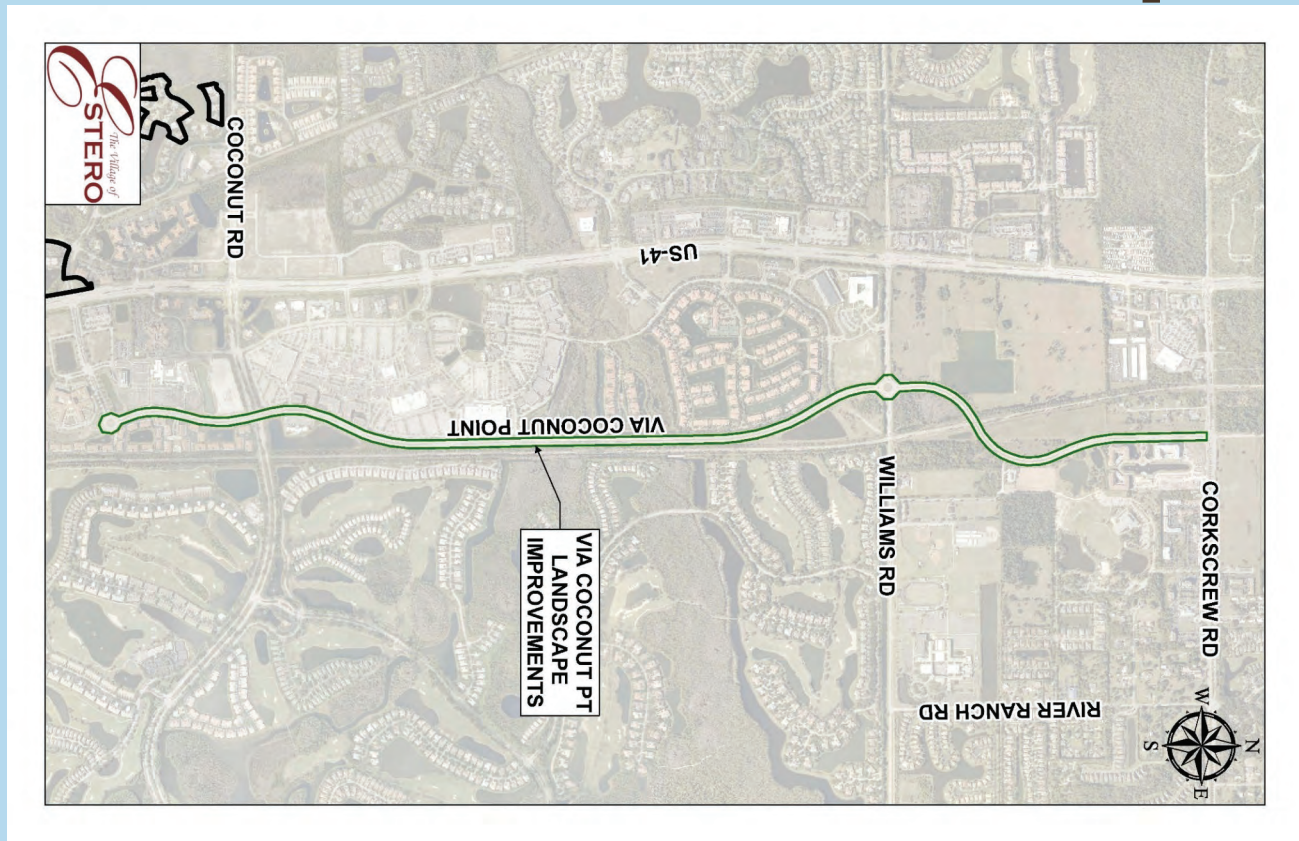


Ben Hill Griffin Pkwy Landscape

- Install landscaping along Ben Hill Griffin Parkway
- Improve sidewalks



Via Coconut Landscape





Via Coconut Landscape

- Install landscaping along Via Coconut Point
- Improve sidewalks
- Design street lighting



Project Status/Schedule

- Corkscrew Road
 - CIP – Council approved
 - Design and Permitting ongoing
 - Construction – Council approval late 2021 early 2022

- River Ranch Road
 - CIP – Council approved
 - Preliminary Design ongoing
 - Design & Permitting – Council approval early 2021
 - Construction – Council approval mid 2022



Project Status/Schedule

- Corkscrew Rd Traffic Signal
 - CIP – Council approved
 - Design complete
 - Construction – Council approval late 2020
 - Construction to start mid 2021

- Monument Signs
 - CIP – Council approved
 - Design & permitting ongoing
 - Construction (first signs) – Council approval mid 2021



Project Status/Schedule

- Coconut Rd Intersection Study
 - CIP – Council approved
 - Preliminary design ongoing
 - Design & permitting – date will be determined with preliminary design
 - Construction – date to be determined
- Country Creek Bypass Swale - Dry Creek Bed
 - CIP – Council approved
 - Preliminary Design – Council approval late 2020
 - Design & permitting – Council approval mid 2021
 - Construction – Council approval mid 2022



Project Status/Schedule

- Williams Rd-Atlantic Gulf Drive
 - CIP – Council approved
 - Preliminary design – Complete
 - Design & permitting – Council approval early 2021
 - Construction – Council approval early 2022
- Intersection Safety Study
 - CIP – Council approved
 - Study (preliminary design) – Council approval early 2021
 - Design & permitting – to be determined
 - Construction – to be determined



Project Status/Schedule

- Williams Road Bike/Ped Improvements
 - CIP – Council approved
 - Preliminary design – Council approval late 2020
 - Design & permitting – Council approval mid 2021
 - Construction – Council approval early 2022
- Sandy Ln & Broadway E Bike/Ped Improvements
 - CIP – Council approved
 - Preliminary design – Council approval early 2021
 - Design & permitting – Council approval mid 2022
 - Construction – Council approval late 2023



Project Status/Schedule

- Estero on the River Master Plan & Design
 - CIP – Council approved
 - Preliminary design – Council approval late 2020
 - Design & permitting – to be determined
 - Construction – to be determined
- Estero Community Park Master Plan & Design
 - CIP – Council approved
 - Preliminary design – Council approval early 2021
 - Design & permitting – to be determined
 - Construction – to be determined



Project Status/Schedule

- Ben Hill Griffin Parkway Landscape Design
 - CIP – Council approved
 - Preliminary design – Council approval late 2020
 - Design & permitting – to be determined
 - Construction – to be determined
- Via Coconut Point Landscape Design
 - CIP – Council approved
 - Preliminary design – Council approval mid 2021
 - Design & permitting – to be determined
 - Construction – to be determined



QUESTIONS?

Additional body copy information.