

ESTERO CROSSING COMMERCIAL & RESIDENTIAL ENTRANCE

CORKSCREW ROAD | ESTERO, FLORIDA 33928

CONSULTANTS

Client

SD ESTERO CROSSING, LLC
2639 PROFESSIONAL CIRCLE, SUITE 101
NAPLES, FLORIDA 34119

Civil
Engineer

DELISI FITZGERALD, INC
1605 HENDRY STREET
FT. MYERS, FLORIDA 33901

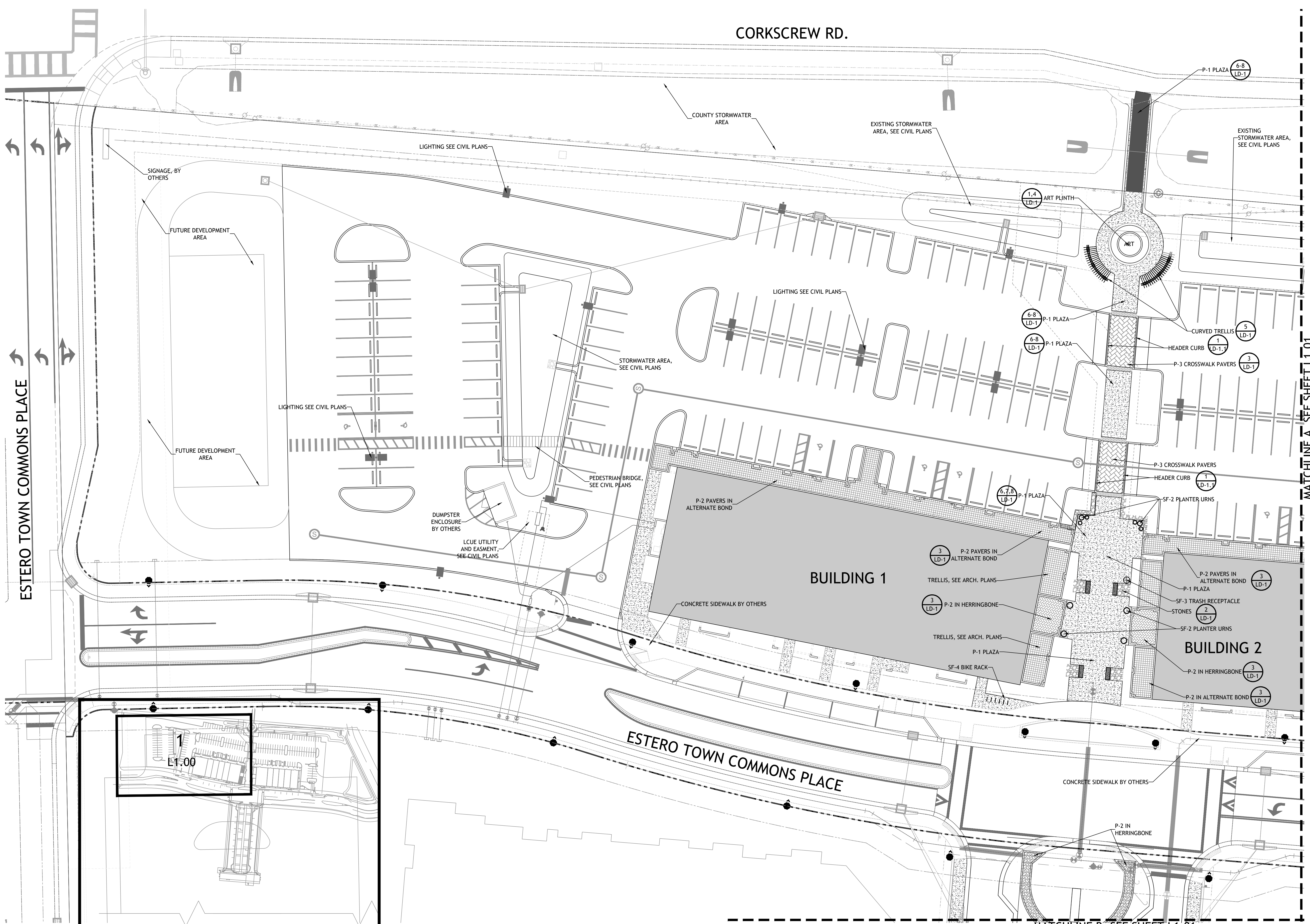
PROJECT SITE VICINITY MAP



INDEX OF DRAWINGS

DRAWING	DRAWING TITLE	PROGRESS SET
COVER	COVER	11/06/2020
LC1.00	LANDSCAPE CALCULATIONS	11/06/2020
LC1.01	LANDSCAPE CALCULATIONS	11/06/2020
L1.00	LANDSCAPE SITE PLAN	11/06/2020
L1.01	LANDSCAPE SITE PLAN	11/06/2020
L2.00	LANDSCAPE DEVELOPMENT PLAN	11/06/2020
L2.01	LANDSCAPE DEVELOPMENT PLAN	11/06/2020
L2.02	LANDSCAPE DEVELOPMENT PLAN	11/06/2020
L2.03	LANDSCAPE DEVELOPMENT PLAN	11/06/2020
L2.04	LANDSCAPE DEVELOPMENT PLAN	11/06/2020
L2.05	LANDSCAPE DEVELOPMENT PLAN	11/06/2020
L2.06	LANDSCAPE DEVELOPMENT PLAN	11/06/2020
LD-1	HARDSCAPE DETAILS	11/06/2020
LD-1.01	HARDSCAPE DETAILS	11/06/2020
LD-2	LANDSCAPE DETAILS	11/06/2020
LD-3	LANDSCAPE SPECIFICATIONS	11/06/2020
IR 1.0	IRRIGATION DEVELOPMENT PLAN	11/06/2020
IR 1.1	IRRIGATION DEVELOPMENT PLAN	11/06/2020
IR 1.2	IRRIGATION DEVELOPMENT PLAN	11/06/2020
LD-4	IRRIGATION NOTES AND DETAILS	11/06/2020
LD-5	IRRIGATION SPECIFICATIONS	11/06/2020





246 Second St. N. Ste. 302
St. Petersburg, FL 33701
T/ 727.821.6699

CONSULTANTS

CIVIL ENGINEER
DELISI FITZGERALD INC
1605 HENDRY STREET
FT MYERS | FLORIDA
239-418-0691
239-288-2537

ARCHITECT
GMA ARCHITECTURE
43 BARKLEY CIR #202
FT MYERS | FLORIDA, 33907
239-275-0225

OWNER

STOCK DEVELOPMENT
2639 PROFESSIONAL CIRCLE, SUITE 102
NAPLES | FLORIDA
239-592-7394

**ESTERO CROSSING
COMMERCIAL & RESIDENTIAL
ENTRANCE**

SIGNATURE & SEAL

FL Registration: LC26000471

DO PLANS

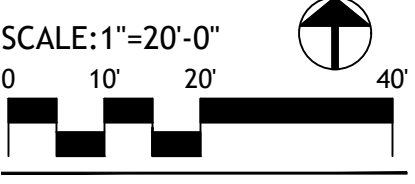
ISSUE DATE	DATE
1 DO PLANS	07-10-20
2 DO PLANS	09-28-20
3 DO PLANS	11-06-20

REVISIONS

NO.	COMMENTS	DATE

SHEET INFORMATION

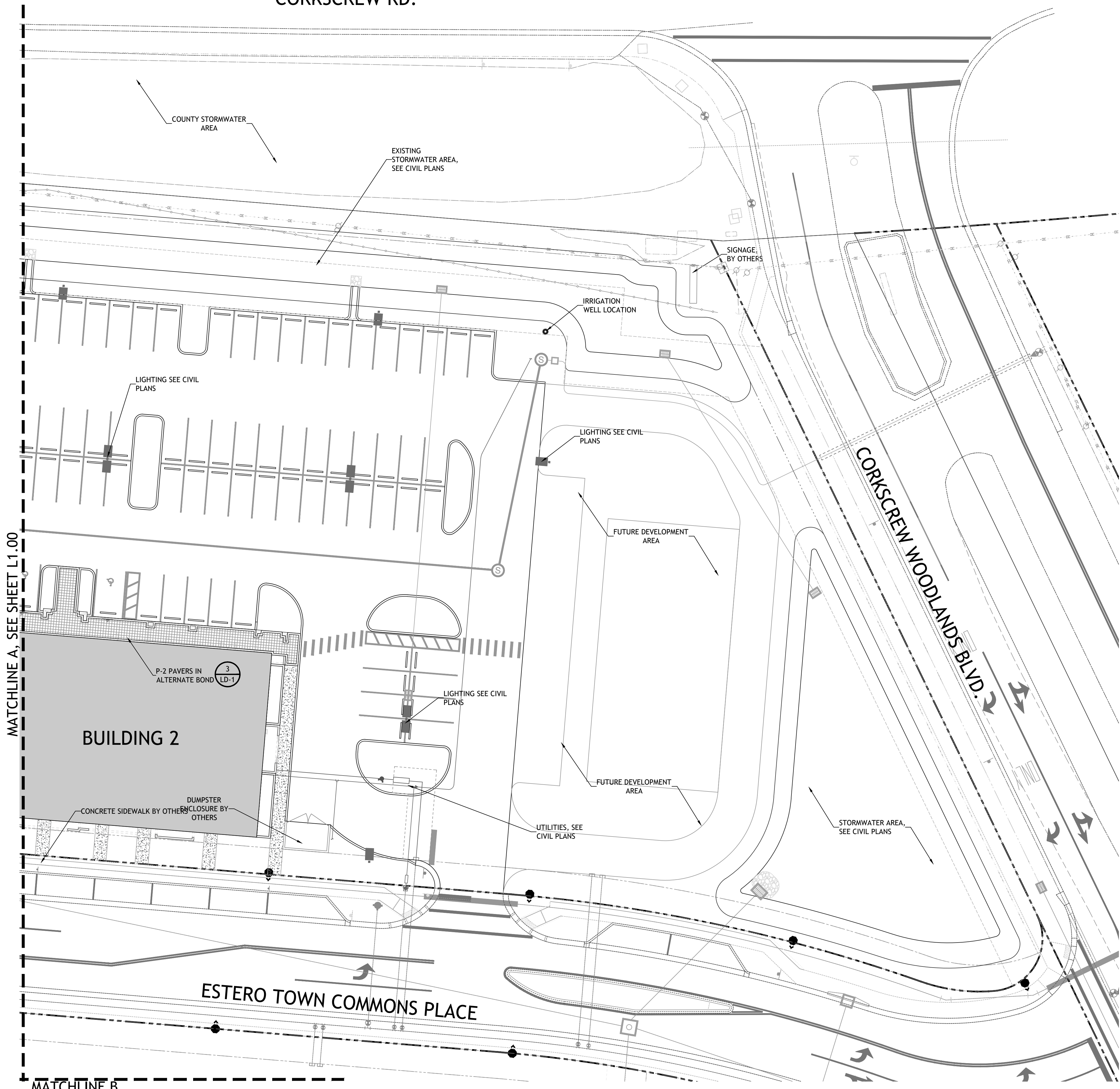
JOB NUMBER 20040
DRAWN BY HB/GS
CHECKED BY HB



**LANDSCAPE
SITE DEVELOPMENT
PLAN**

L1.00

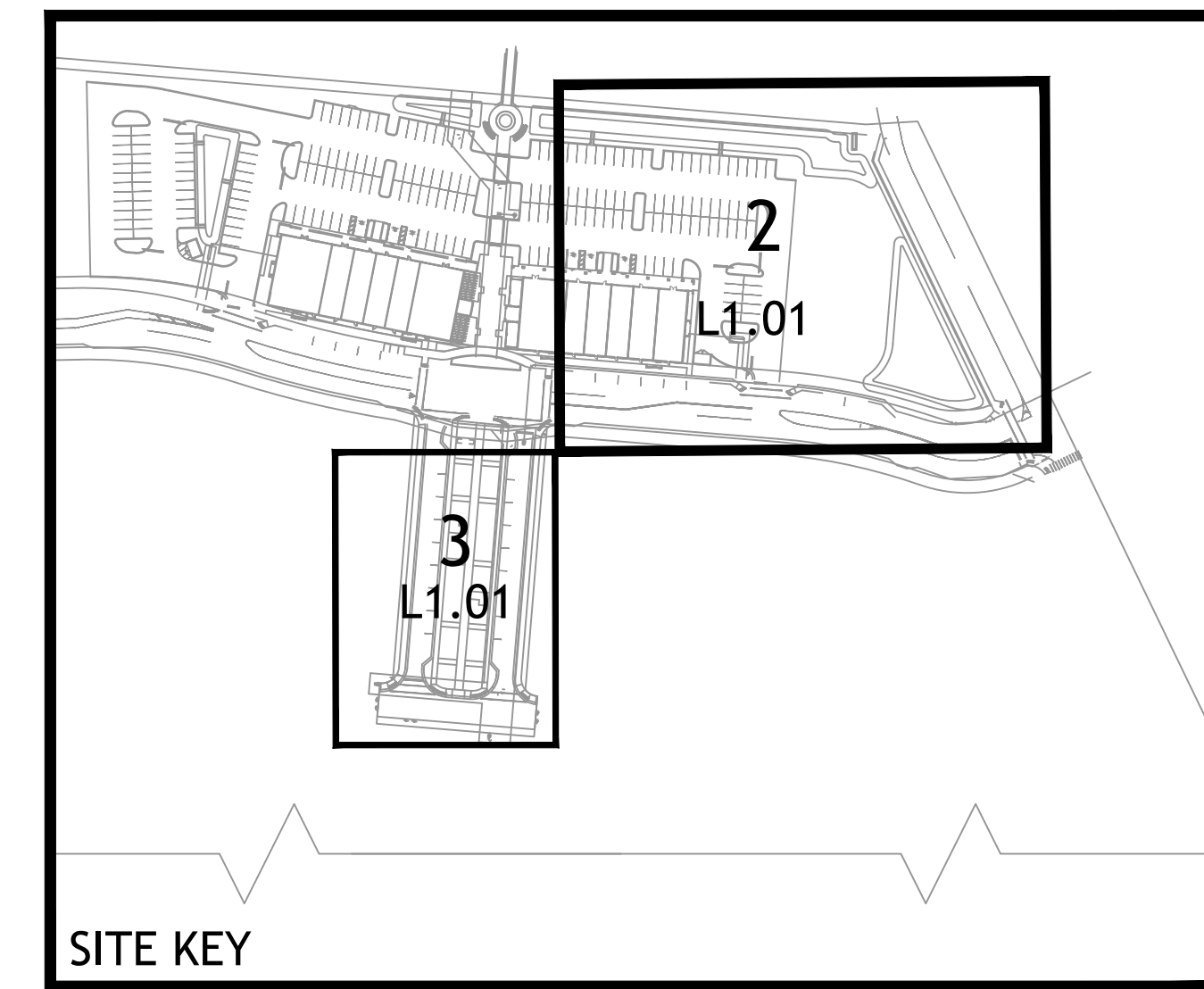
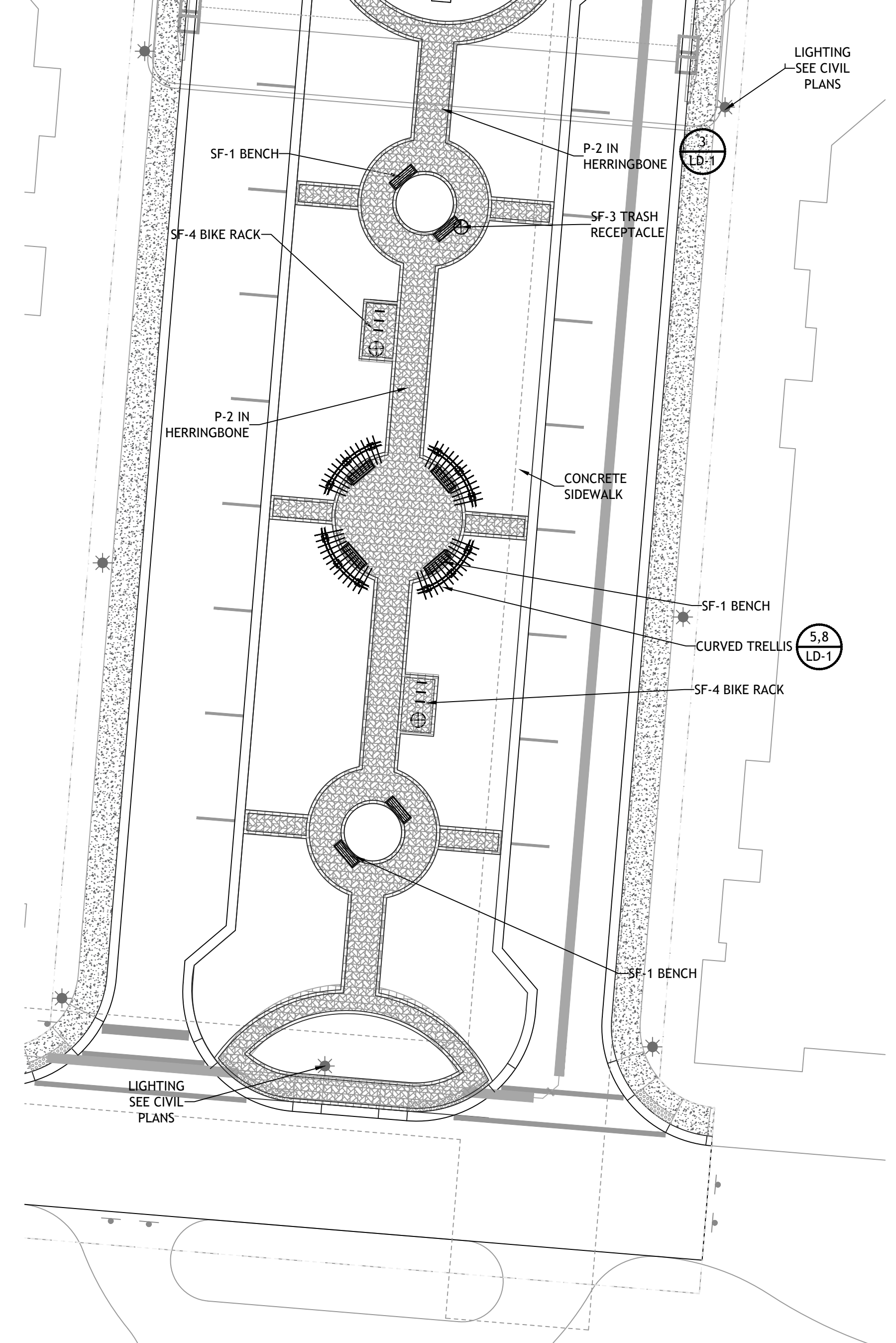
CORKSCREW RD.



MATCHLINE A, SEE SHEET L1.00

MATCHLINE B

MATCHLINE B, SEE SHEET L1.00



246 Second St. N. Ste. 302
St. Petersburg, FL 33701
T/ 727.821.6699

CONSULTANTS
CIVIL ENGINEER
DELISI FITZGERALD INC
1605 HENDRY STREET
FT MYERS | FLORIDA
239-418-0691
239-288-2537
ARCHITECT
GMA ARCHITECTURE
43 BARKLEY CIR #202
FT MYERS | FLORIDA, 33907
239-275-0225

OWNER
STOCK DEVELOPMENT
2639 PROFESSIONAL CIRCLE, SUITE 102
NAPLES | FLORIDA
239-592-7394

**ESTERO CROSSING
COMMERCIAL & RESIDENTIAL
ENTRANCE**
CORKSCREW ROAD
ESTERO | FLORIDA

SIGNATURE & SEAL

FL Registration: LC26000471

DO PLANS

ISSUE DATE	DATE
1 DO PLANS	07-10-20
2 DO PLANS	09-28-20
3 DO PLANS	11-06-20

REVISIONS

NO.	COMMENTS	DATE

SHEET INFORMATION
JOB NUMBER 20040
DRAWN BY HB/GS
CHECKED BY HB

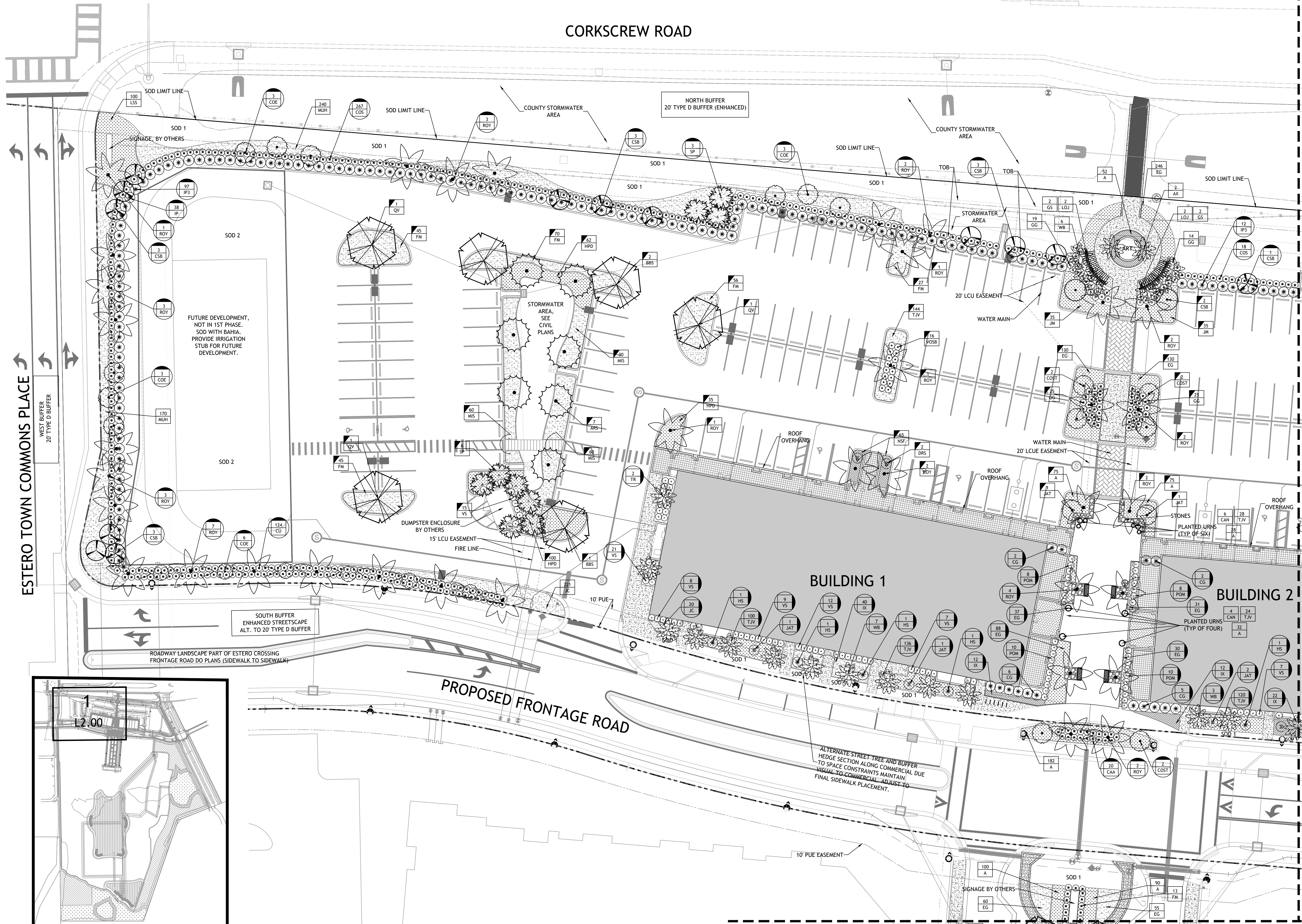
SCALE: 1"=20'-0"
0 10' 20' 40'

**LANDSCAPE
SITE DEVELOPMENT
PLAN**

L1.01

Copyright 2020 Booth Design Group

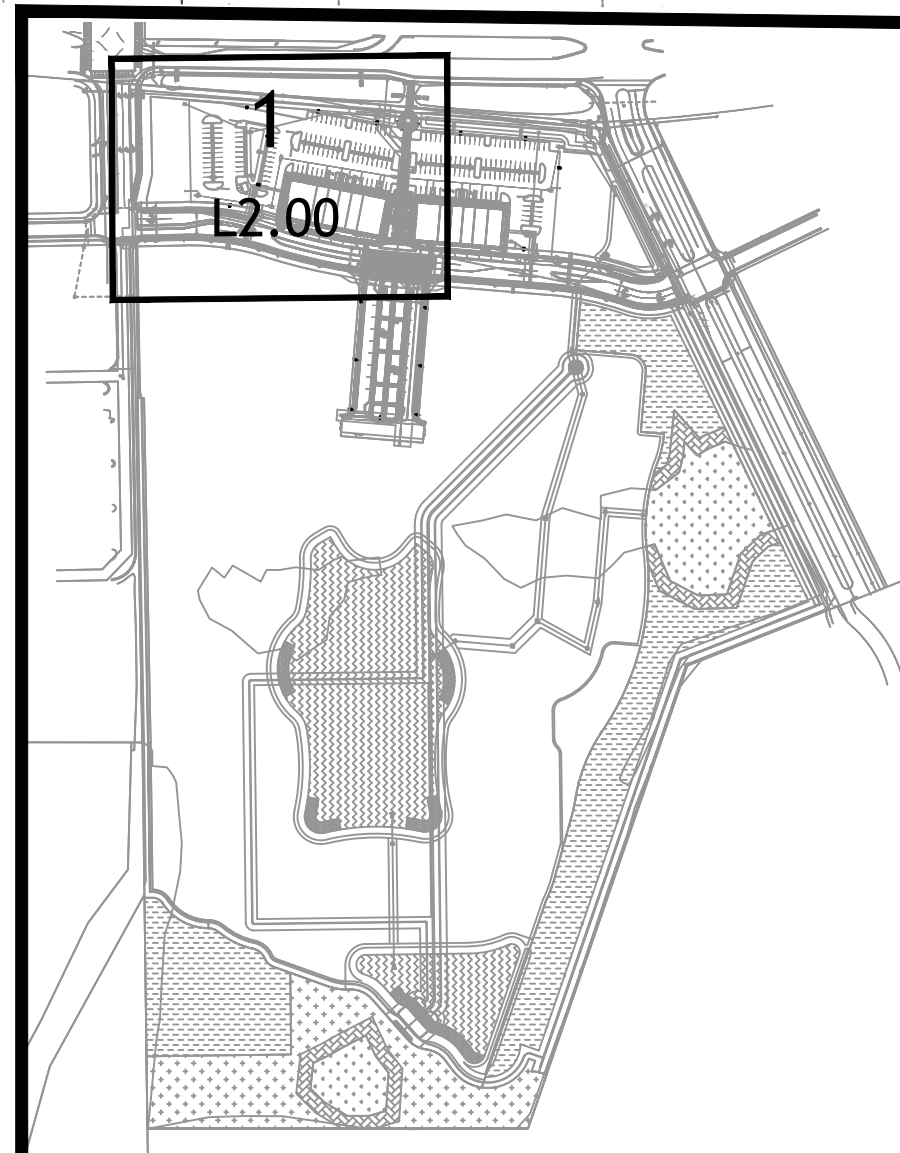
CORKSCREW ROAD



ESTERO TOWN COMMONS PLACE
WEST BUFFER
20' TYPE D BUFFER

MATCHLINE A, SEE SHEET L2.01

ESTERO CROSSING
COMMERCIAL & RESIDENTIAL
ENTRANCE
CORKSCREW ROAD
ESTERO | FLORIDA



SITE KEY

MATCHLINE B, SEE SHEET L2.01



346 Second St. N. Ste. 302
St. Petersburg, FL 33701
T/ 727.821.6699
CONSULTANTS
CIVIL ENGINEER
DELISI FITZGERALD INC
1605 HENDRY STREET
FT MYERS | FLORIDA
239-418-0691
239-288-2537
ARCHITECT
GMA ARCHITECTURE
43 BARKLEY CIR #202
FT MYERS | FLORIDA, 33907
239-275-0225

OWNER
STOCK DEVELOPMENT
2639 PROFESSIONAL CIRCLE, SUITE 102
NAPLES | FLORIDA
239-592-7394

SIGNATURE & SEAL

FL Registration: LC26000471

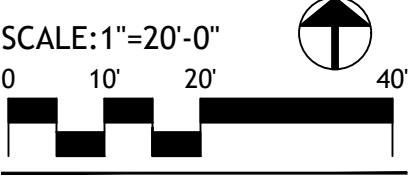
DO PLANS

ISSUE DATE	NO.	COMMENTS	DATE
	1	DO PLANS	07-10-20
	2	DO PLANS	09-28-20
	3	DO PLANS	11-06-20

REVISIONS

NO.	COMMENTS	DATE

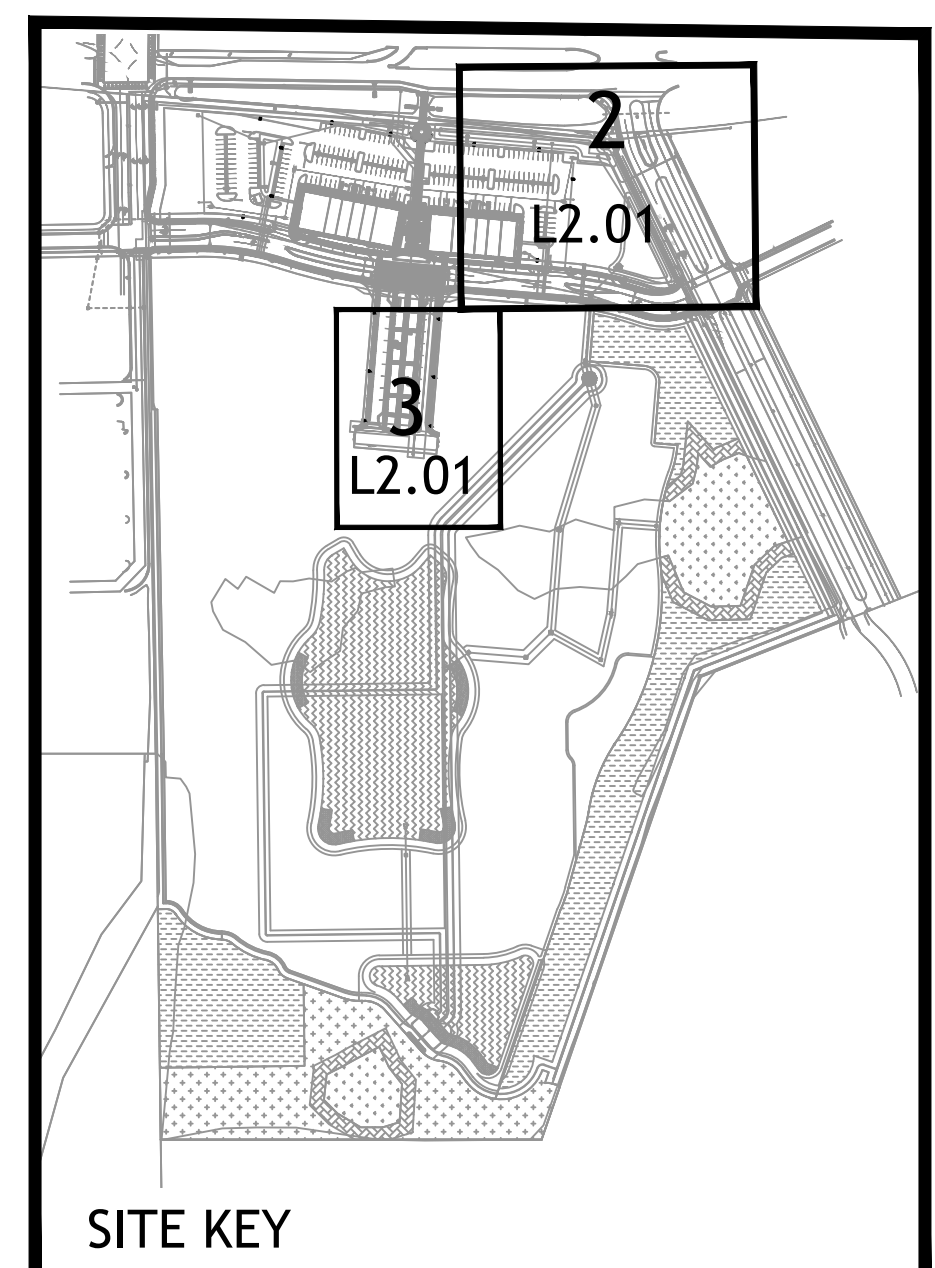
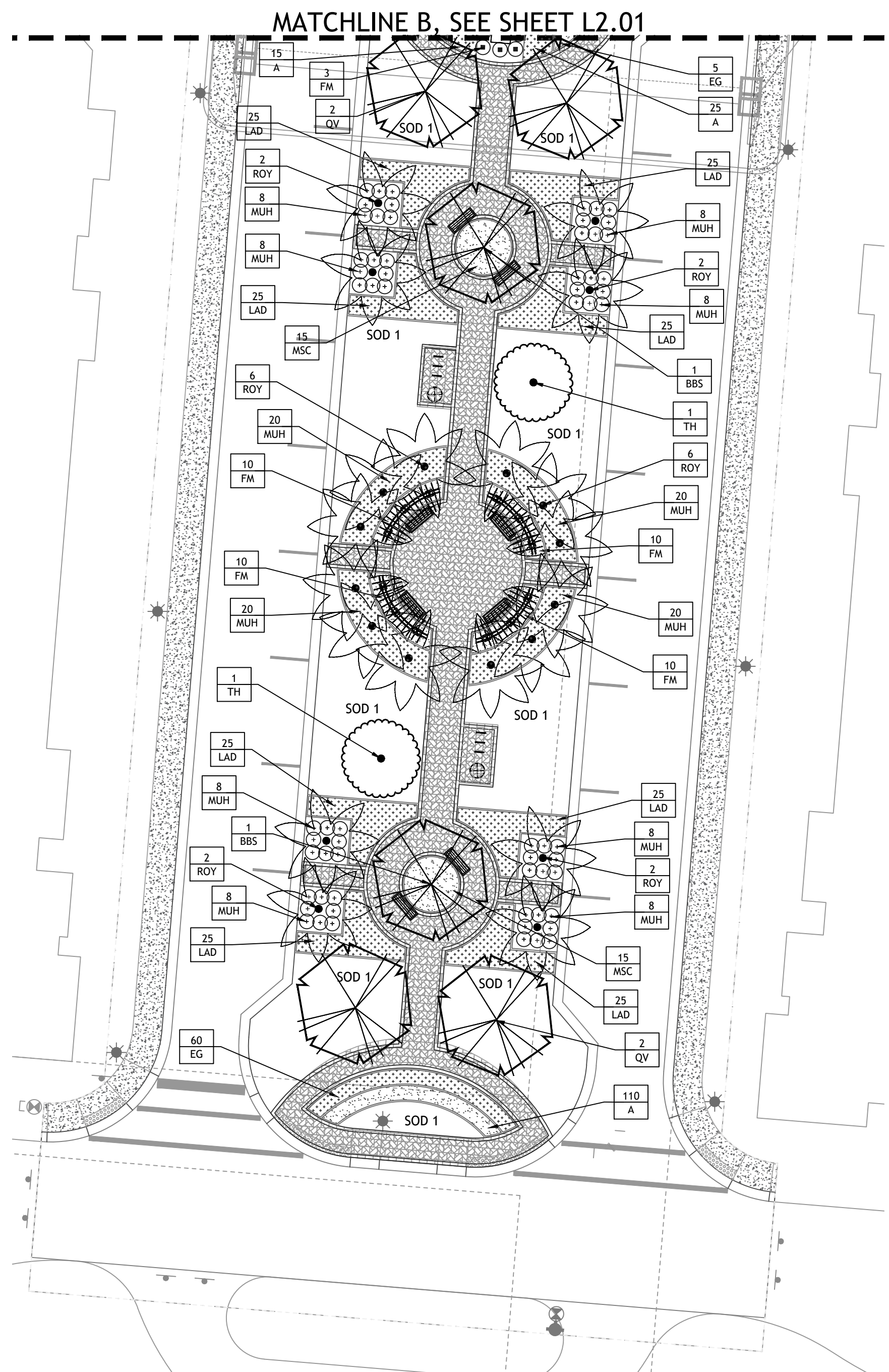
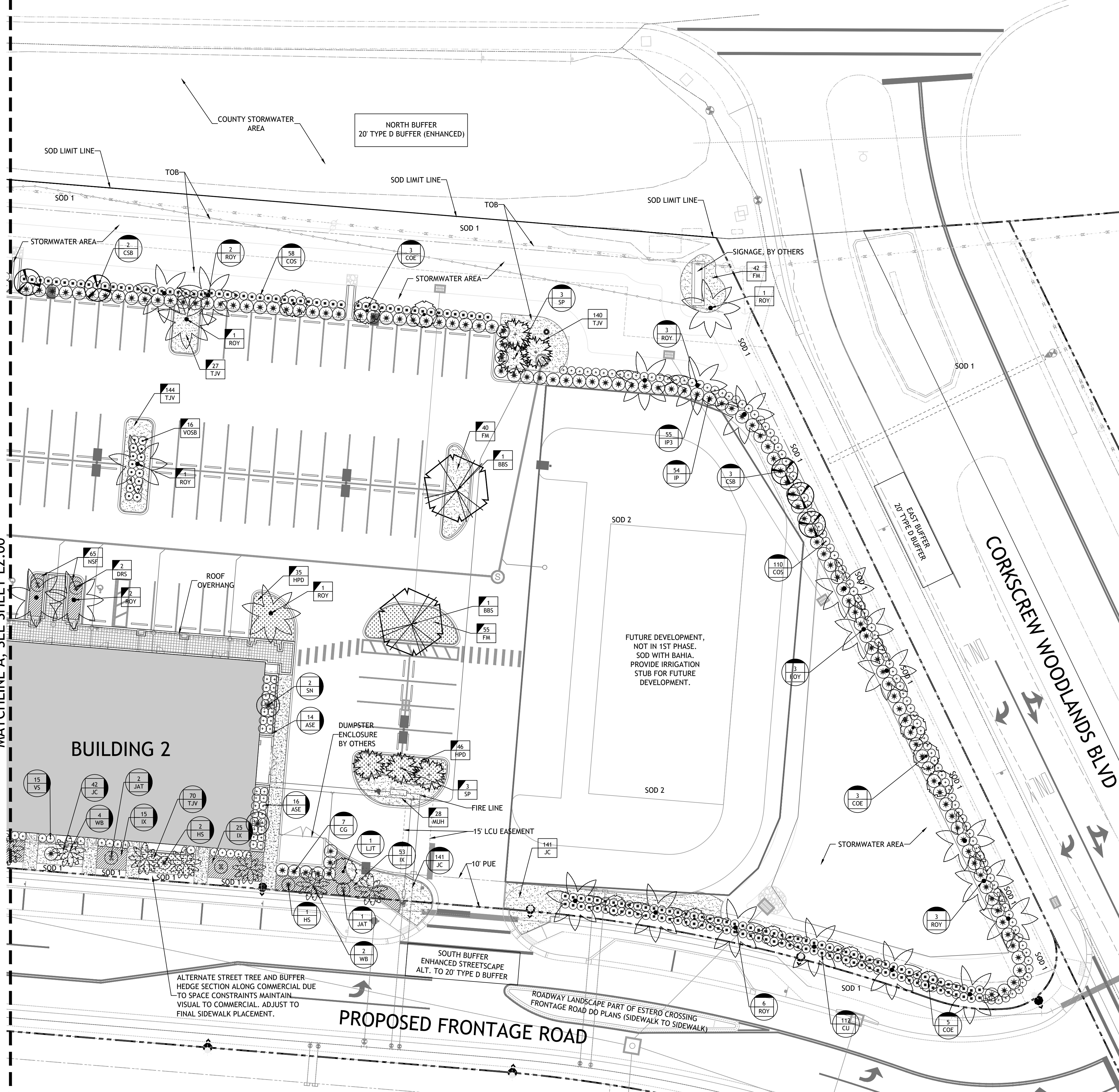
SHEET INFORMATION
JOB NUMBER 20040
DRAWN BY HB/GS
CHECKED BY HB



SCALE: 1"=20'-0"
LANDSCAPE DEVELOPMENT PLAN

L2.00
Copyright 2020 Booth Design Group

CORKSCREW ROAD



346 Second St. N. Ste. 302
St. Petersburg, FL 33701
T/ 727.821.6699

CONSULTANTS
CIVIL ENGINEER
DELISI FITZFERALD INC
1605 HENDRY STREET
FT MYERS | FLORIDA
239-418-0691
239-288-2537

ARCHITECT
GMA ARCHITECTURE
43 BARKLEY CIR #202
FT MYERS | FLORIDA, 33907
239-275-0225

OWNER
STOCK DEVELOPMENT
2639 PROFESSIONAL CIRCLE, SUITE 102
NAPLES | FLORIDA
239-592-7394

**ESTERO CROSSING
COMMERCIAL & RESIDENTIAL
ENTRANCE**

CORKSCREW ROAD
ESTERO | FLORIDA

SIGNATURE & SEAL

FL Registration: LC26000471

DO PLANS

ISSUE DATE	DATE
1 DO PLANS	07-10-20
2 DO PLANS	09-28-20
3 DO PLANS	11-06-20

REVISIONS

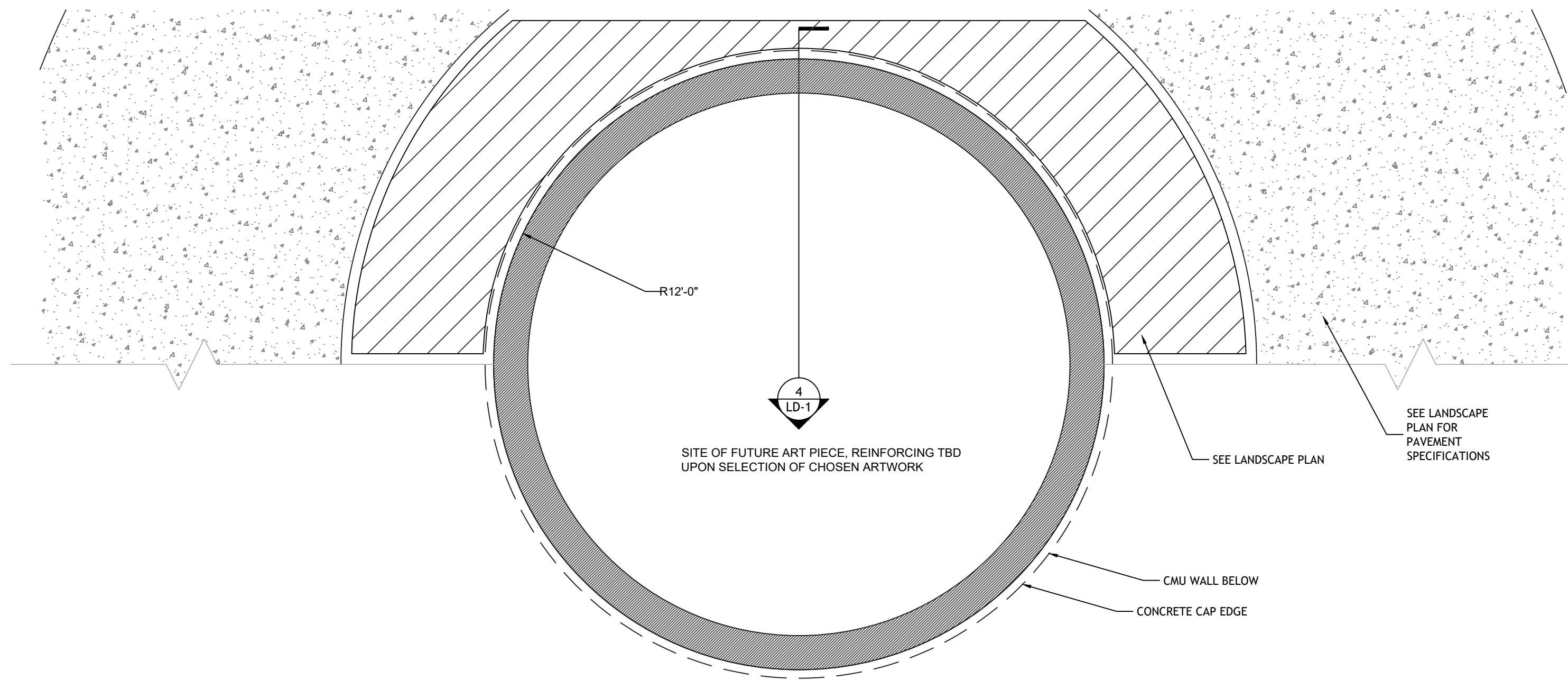
NO.	COMMENTS	DATE

SHEET INFORMATION
JOB NUMBER 20040
DRAWN BY HB/GS
CHECKED BY HB

SCALE: 1"=20'-0"
0 10' 20' 40'

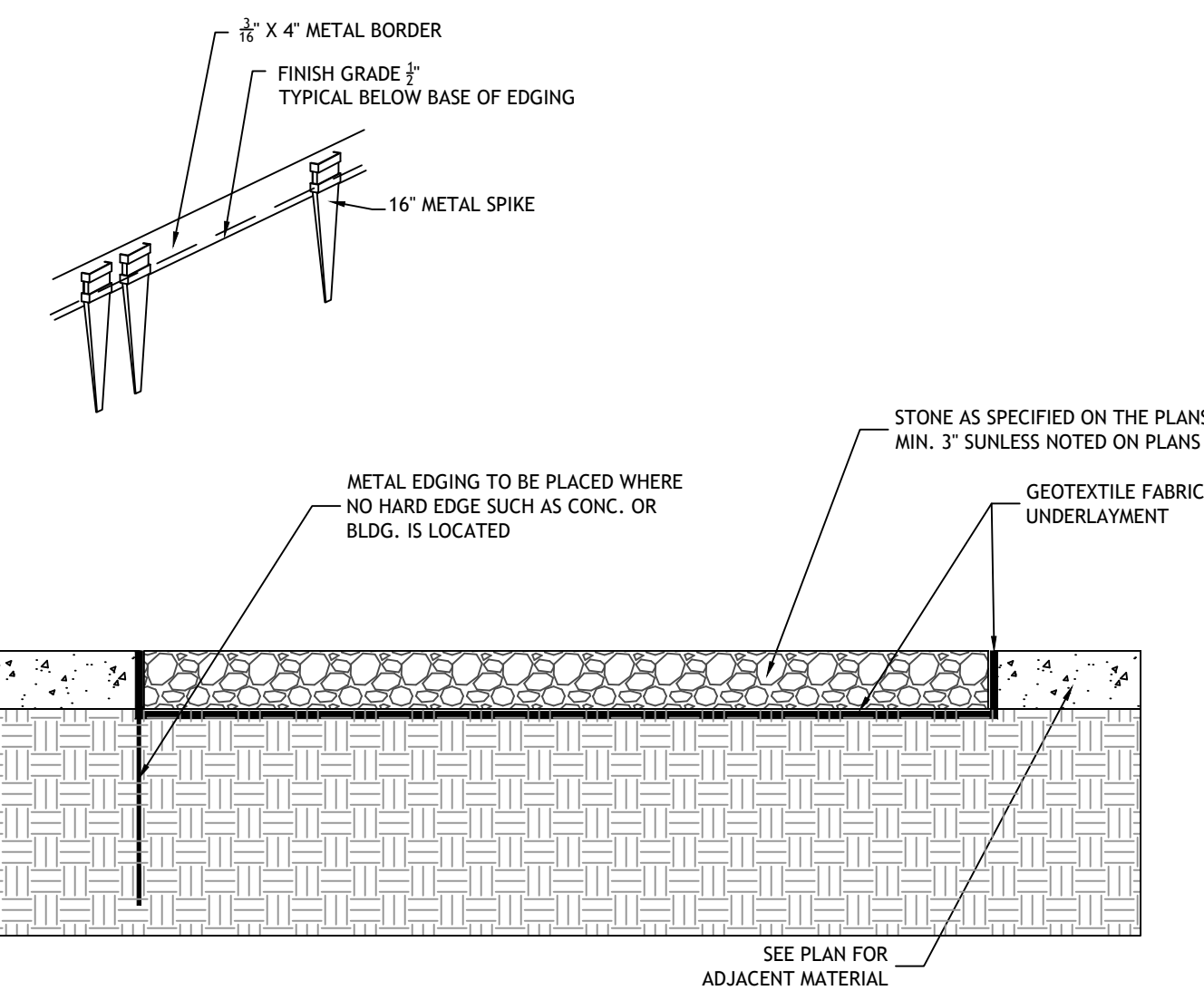
**LANDSCAPE
DEVELOPMENT
PLAN**

L2.01



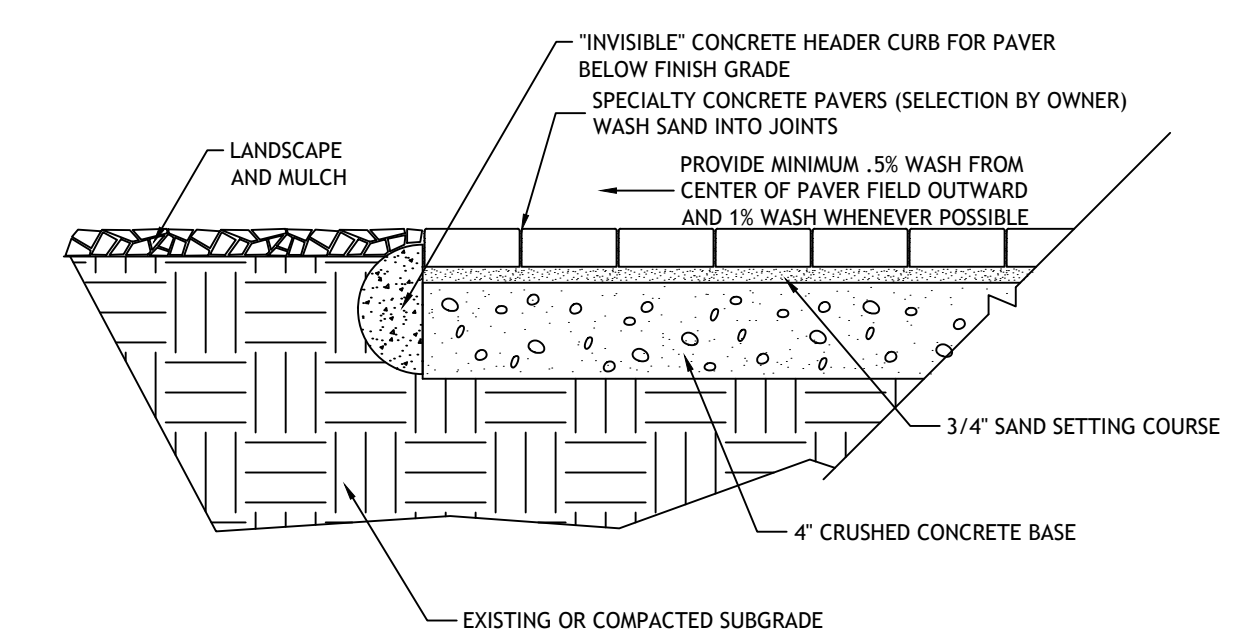
1 ART PLINTH- PLAN VIEW
SCALE 1/2"=1'-0"

- NOTES:
 1. ALUMINIUM EDGING SHALL BE USED INSTEAD OF STEEL EDGING.
 2. COLOR SHALL BE (SILVER) ALUMINIUM.
 3. CONTRACTOR SHALL PROVIDE SAMPLE FOR APPROVAL.

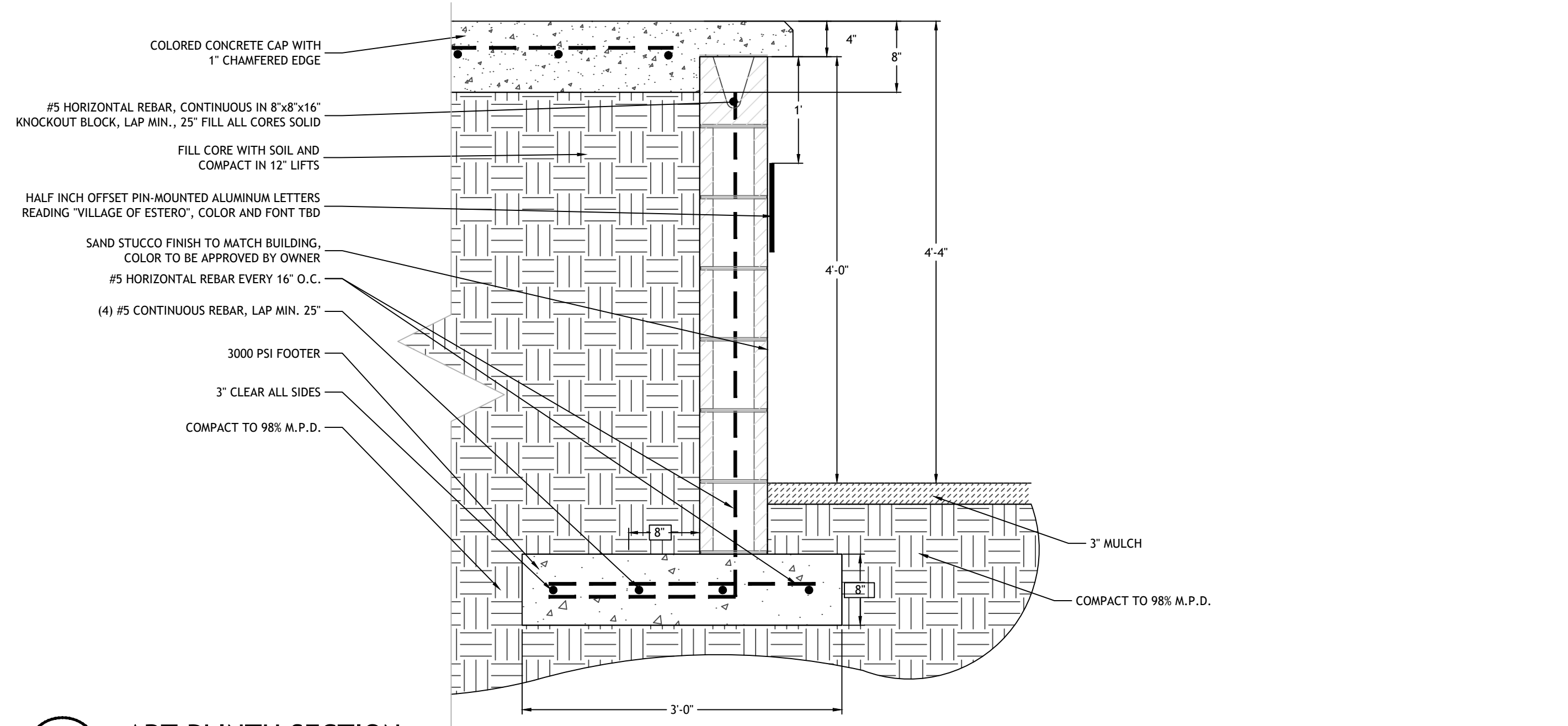


2 ROCK W/ UNDERLAYMENT
SCALE: N.T.S.

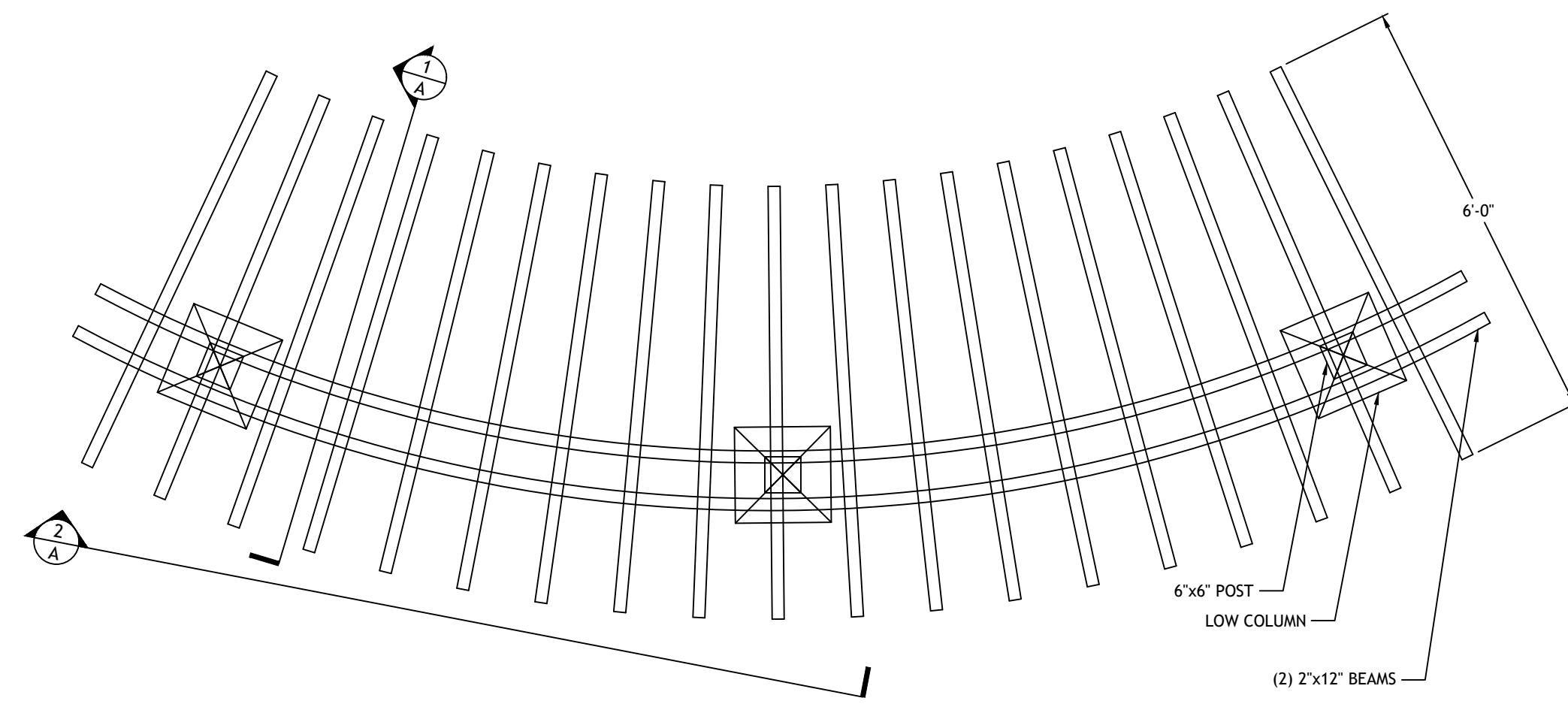
- NOTES:
 -SEE PAVEMENT LEGEND FOR PAVEMENT SPECIFICATIONS AND PATTERNS
 -BEDDING SAND TO BE CONCRETE SAND, ALL BEDDING SAND TO CONFORM TO ASTM C33 OR CSA A23.1
 -NO MASONRY SAND, LIMESTONE SCREENINGS, CRUSHED SHELL OR STONE DUST WILL BE ACCEPTED AS AN ALTERNATE SAND SETTING MATERIAL.
 -ALL SAND FOR JOINTS SHALL CONFORM TO ASTM C144. BEDDING SAND CAN BE USED FOR JOINTS UNLESS OTHERWISE SPECIFIED.



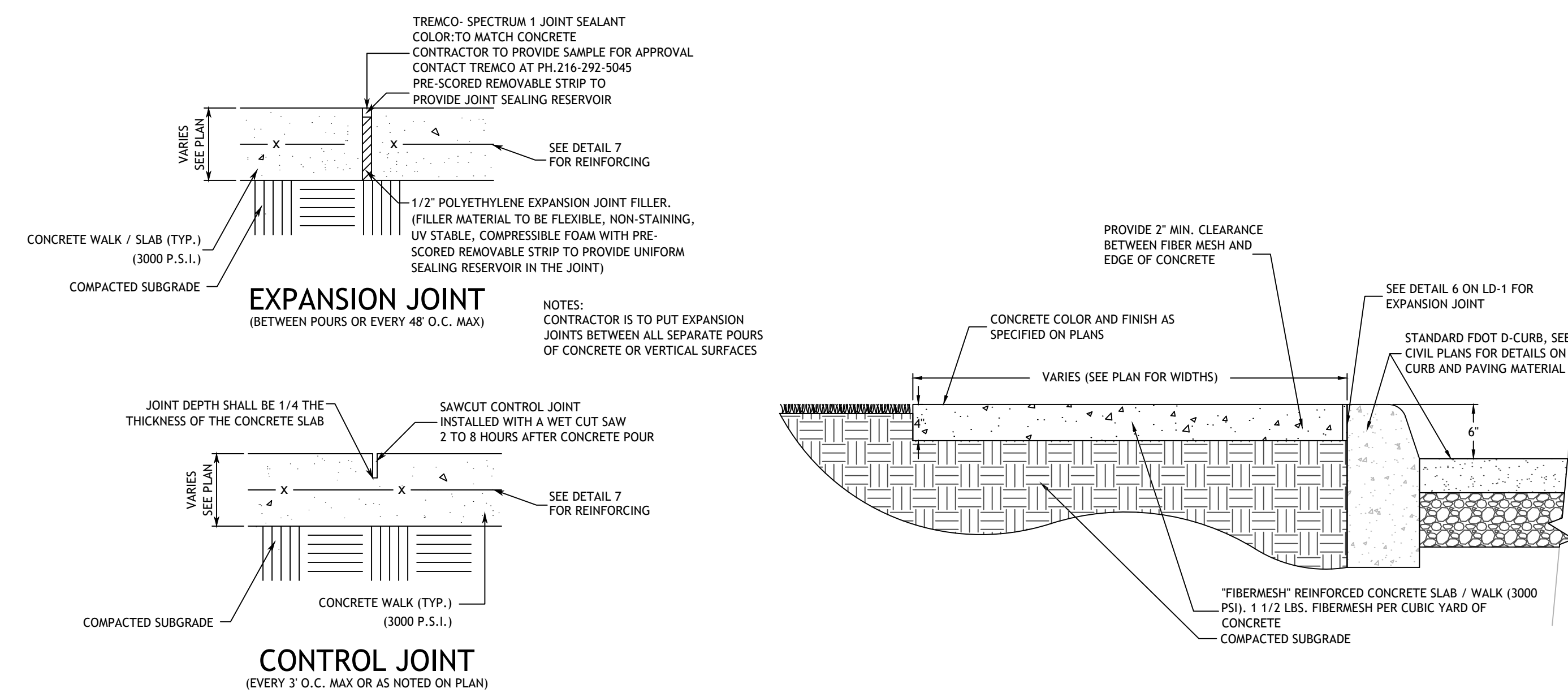
3 CONC. PAVER SECTION W/ CRUSHED CONC. BASE
SCALE: N.T.S.



4 ART PLINTH SECTION
SCALE 1"=1'-0"

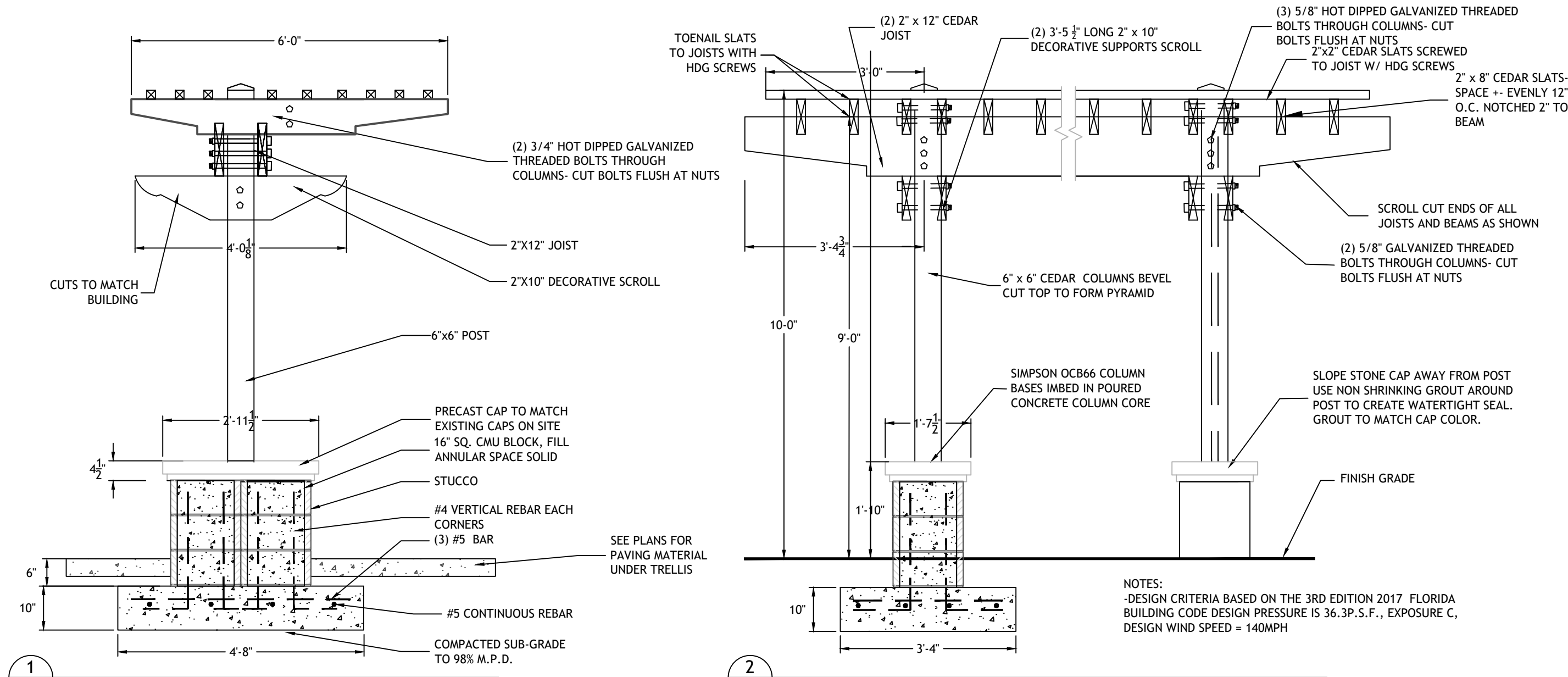


5 TRELLIS (PLAN VIEW)
SCALE 1/2"=1'-0"



6 CONCRETE JOINT DETAILS
N.T.S.

7 4" CONC. WALK
SCALE 1"=1'-0"



8 TRELLIS
SCALE 1/2"=1'-0"



146 Second St. N. Ste. 302
 St. Petersburg, FL 33701
 T: 727.821.5699

CONSULTANTS
 CIVIL ENGINEER
DELISI FITZFERALD INC
 1605 HENDRY STREET
 FT MYERS | FLORIDA
 239-418-0691
 239-288-2537
 ARCHITECT
GMA ARCHITECTURE
 43 BARKLEY CIR #202
 FT MYERS | FLORIDA, 33907
 239-275-0225

OWNER
 STOCK DEVELOPMENT
 2639 PROFESSIONAL CIRCLE, SUITE 102
 NAPLES | FLORIDA
 239-592-7394

**ESTERO CROSSING
 COMMERCIAL & RESIDENTIAL
 ENTRANCE**
 CORKSCREW ROAD
 ESTERO | FLORIDA

SIGNATURE & SEAL

FL Registration: LC26000471

DO PLANS

ISSUE DATE	NO.	COMMENTS	DATE
	1	DO PLANS	07-10-20
	2	DO PLANS	09-28-20
	3	DO PLANS	11-08-20

REVISIONS

NO.	COMMENTS	DATE

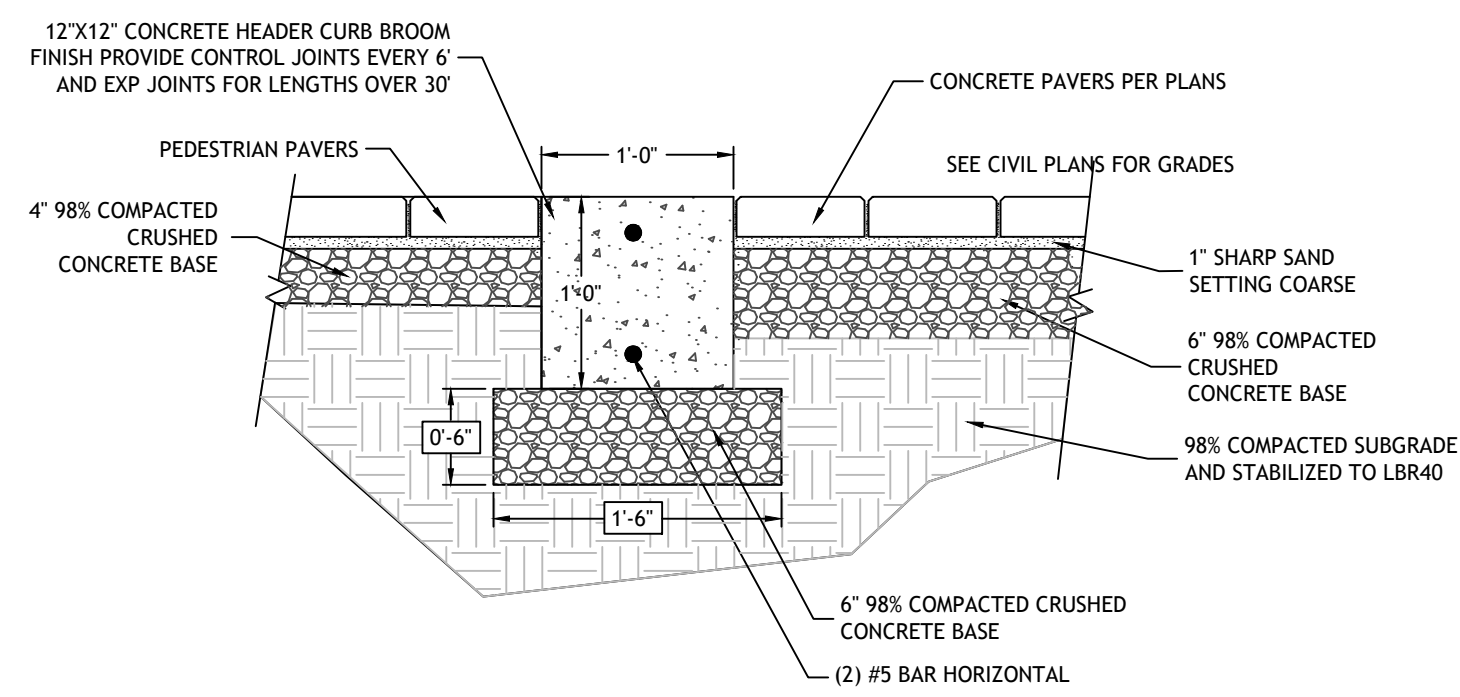
NO. COMMENTS DATE
SHEET INFORMATION
 JOB NUMBER 20040
 DRAWN BY HB/GS
 CHECKED BY HB

SCALE: NO SCALE

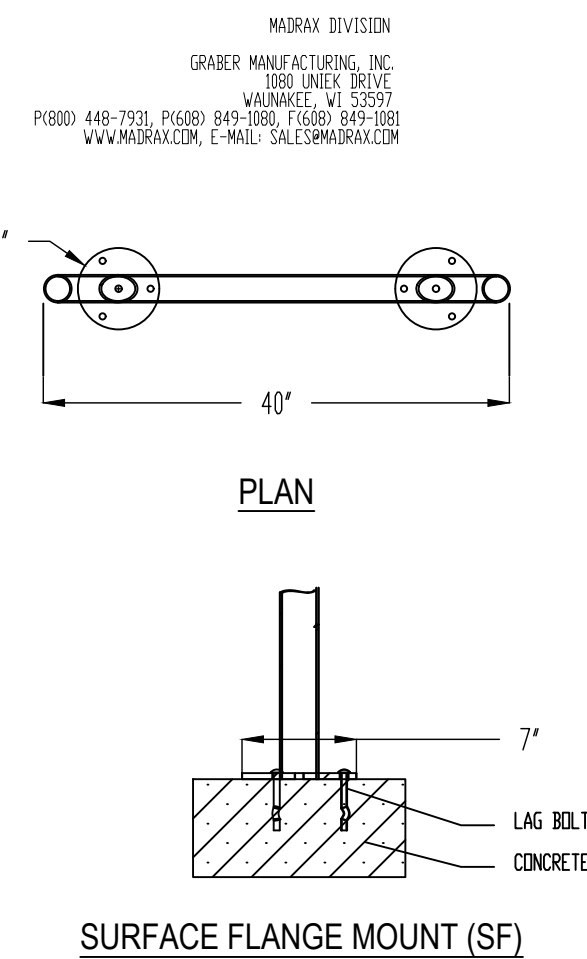


**HARDSCAPE
 DETAILS**
LD-1
 Copyright 2020 Booth Design Group

NOTES:
 -SEE PAVER LEGEND FOR PAVER SPECIFICATIONS AND PATTERNS
 -BEDDING SAND TO BE CONCRETE SAND, ALL BEDDING SAND TO CONFORM TO ASTM C33 OR CSA A23.1.
 -NO MASONRY SAND, LIMESTONE SCREENINGS, CRUSHED SHELL OR STONE DUST WILL BE ACCEPTED AS AN ALTERNATE BASE MATERIAL.
 -ALL SAND FOR JOINTS SHALL CONFORM TO ASTM C144. BEDDING SAND CAN BE USED FOR JOINTS UNLESS OTHERWISE SPECIFIED.
 -FOR EXPANSION JOINT ON CURB, USE PER-FORMED JOINT FILLER AND JOINT SEAL AS REQUIRED BETWEEN CURBS AND CONCRETE PAVEMENT ONLY.



1 CONCRETE HEADER CURB & VEHICULAR PAVERS DETAIL
 LD-1.1 SCALE 1"=1'-0"



PRODUCT: 302-133
 DESCRIPTION: ORION BIKE RACK
 2 BIKE, IN GROUND MOUNT
 DATE: 07-07-2020
 ENG: SHC
 CONFIDENTIAL DRAWING AND INFORMATION IS NOT TO BE COPIED OR DISCLOSED TO OTHERS WITHOUT THE CONSENT OF GRABER MANUFACTURING, INC. SPECIFICATIONS ARE SUBJECT TO CHANGE WITHOUT NOTICE.
 ©2018 GRABER MANUFACTURING, INC. ALL PROPRIETARY RIGHTS RESERVED.

NOTES:
 1. INSTALL BIKE RACKS ACCORDING TO MANUFACTURER'S SPECIFICATIONS.
 2. CONSULTANTS TO SELECT COLOR OF RACKS; SEE MANUFACTURER'S SPECIFICATIONS.
 3. SEE SITE PLAN FOR LOCATION OR CONSULT OWNER.

2 ORION BIKE RACK
 LD-1.1 NOT TO SCALE



146 Second St. N. Ste. 302
 St. Petersburg, FL 33701
 T: 727.821.5699

CONSULTANTS

CIVIL ENGINEER
 DELISI FITZFERALD INC
 1605 HENDRY STREET
 FT MYERS | FLORIDA
 239-418-0691
 239-288-2537
 ARCHITECT
 GMA ARCHITECTURE
 43 BARKLEY CIR #202
 FT MYERS | FLORIDA, 33907
 239-279-0225

OWNER

STOCK DEVELOPMENT
 2639 PROFESSIONAL CIRCLE, SUITE 102
 NAPLES | FLORIDA
 239-592-7394

**ESTERO CROSSING
 COMMERCIAL & RESIDENTIAL
 ENTRANCE**
 CORKSCREW ROAD
 ESTERO | FLORIDA

SIGNATURE & SEAL

FL Registration: LC26000471

DO PLANS

ISSUE DATE

NO.	ISSUE DATE	DESCRIPTION
1	07-10-20	DO PLANS
2	09-28-20	DO PLANS
3	11-08-20	DO PLANS

REVISIONS

NO.	COMMENTS	DATE

SHEET INFORMATION

JOB NUMBER: 20040
 DRAWN BY: HB/GS
 CHECKED BY: HB

SCALE: NO SCALE



**HARDSCAPE
 DETAILS**

LD-1.01