

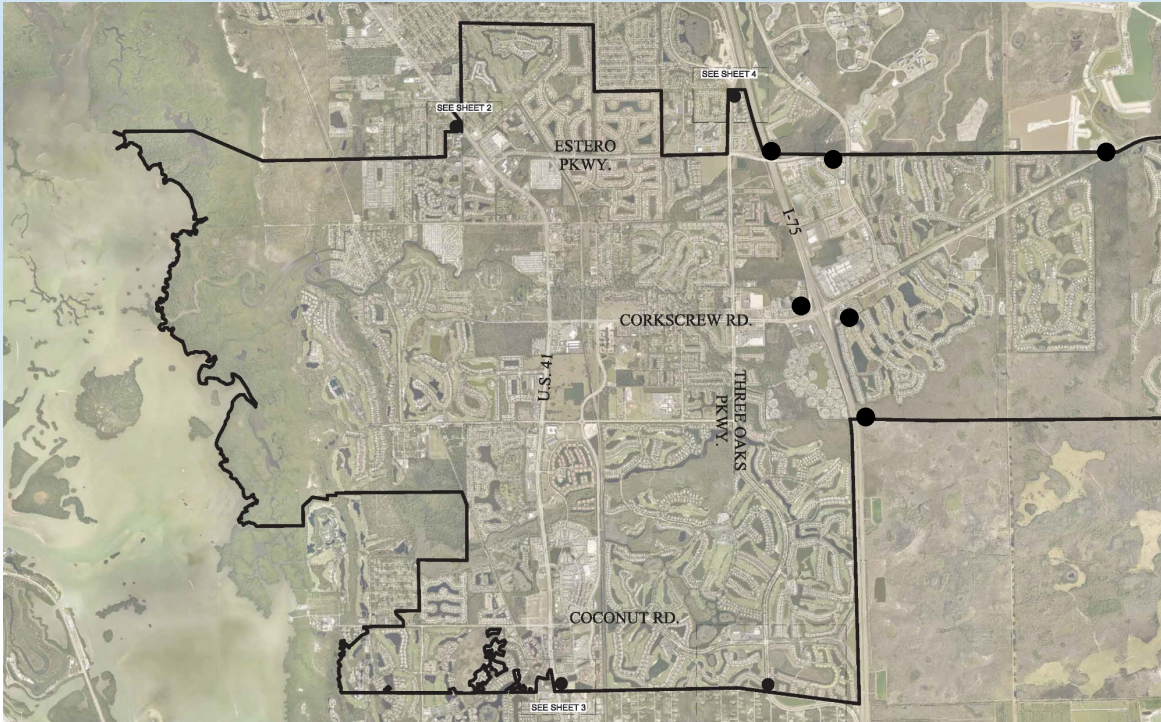


# Village of Estero Monument Sign Locations

David Willems, P.E.

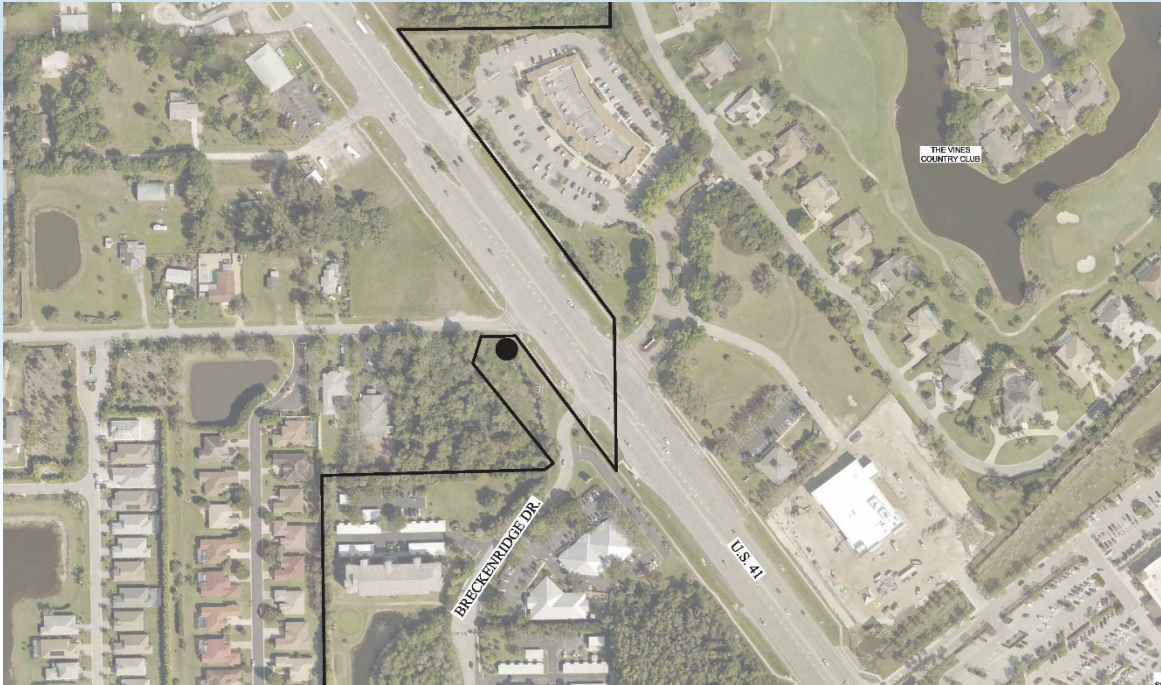


# Monument Sign Locations





# US 41 North







# US 41 North







# US 41 North

1. Utility conflicts
2. Swale modifications (culverts)
3. Locate outside right-of-way on Breckenridge Association property?
4. Coordinate w/ Breckenridge sign
5. Remove guard rails
6. Clear zone requirements



# US 41 South





# US 41 South





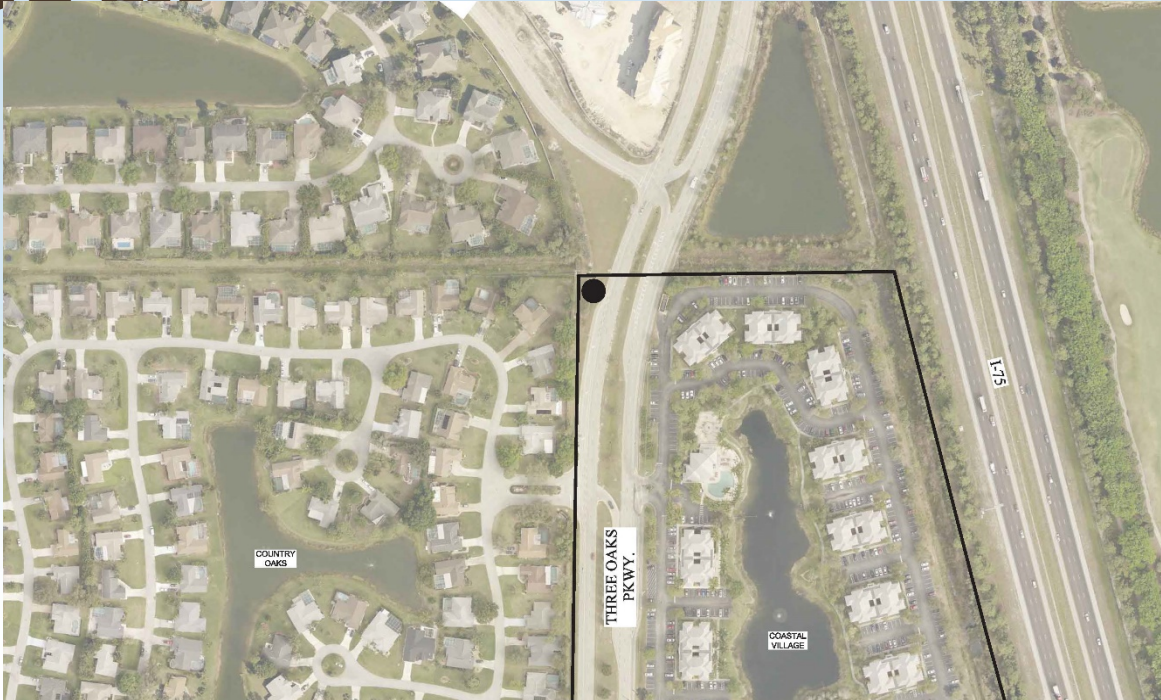


# US 41 South

1. Utility conflicts
2. Coordinate w/ Coconut Point sign
3. Swale modifications (culverts)
4. Clear zone requirements



# Three Oaks Parkway North





# Three Oaks Parkway North





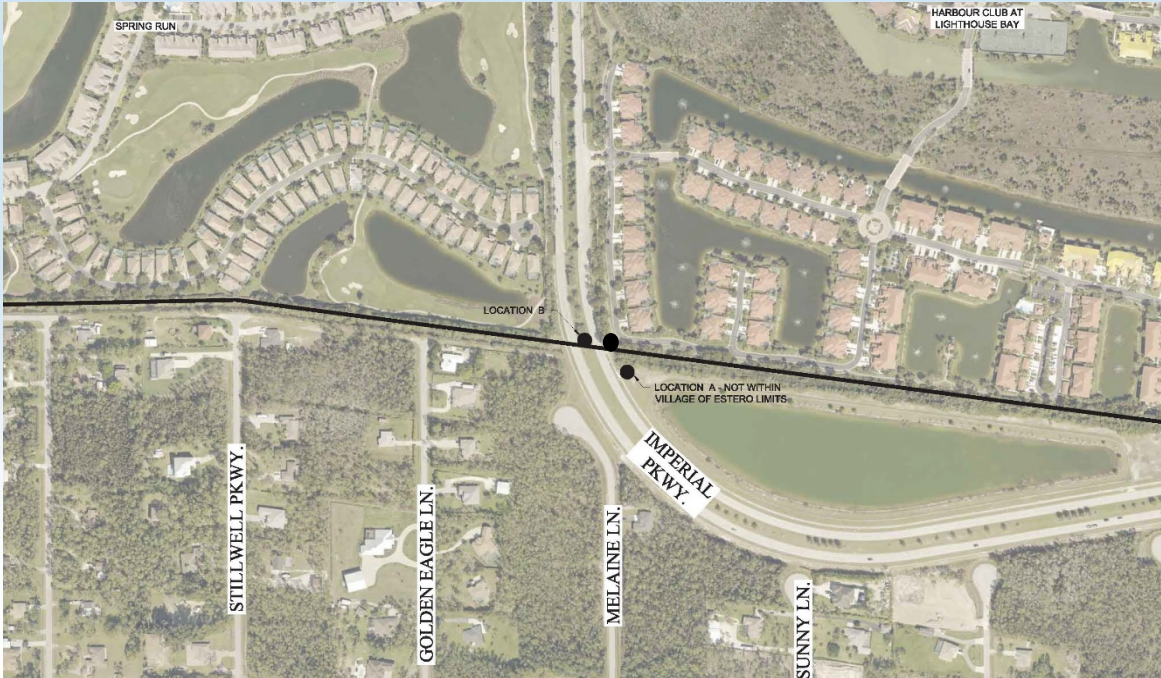


# Three Oaks Parkway North

1. Is this the appropriate location? -  
West side of road is not in Estero
2. Utility conflicts
3. Relocated street light



# Three Oaks Parkway South





# Three Oaks Parkway South







# Three Oaks Parkway South





# Three Oaks Parkway South

1. Which location? median or shoulder?
2. Shoulder
  - a) Utility conflicts
  - b) Remove/replace guard rail
  - c) Integrate w/ existing wall
  - d) Relocate street light



# Three Oaks Parkway South

## 3. Median

- a) Impact when road is widened
- b) Could be limited to less than 12-ft wide
- c) More likely to be damaged by vehicles





# Ben Hill Griffin





# Ben Hill Griffin





# Corkscrew Road







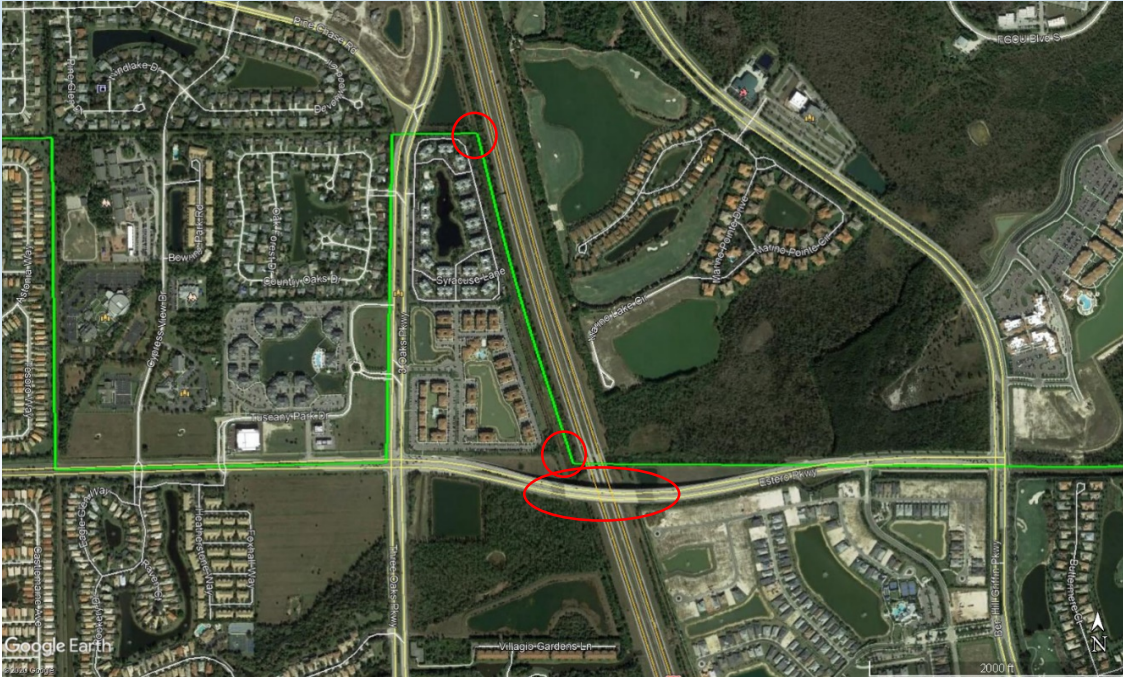
# Corkscrew Road







# I 75 North





# I 75 North





# I 75 North







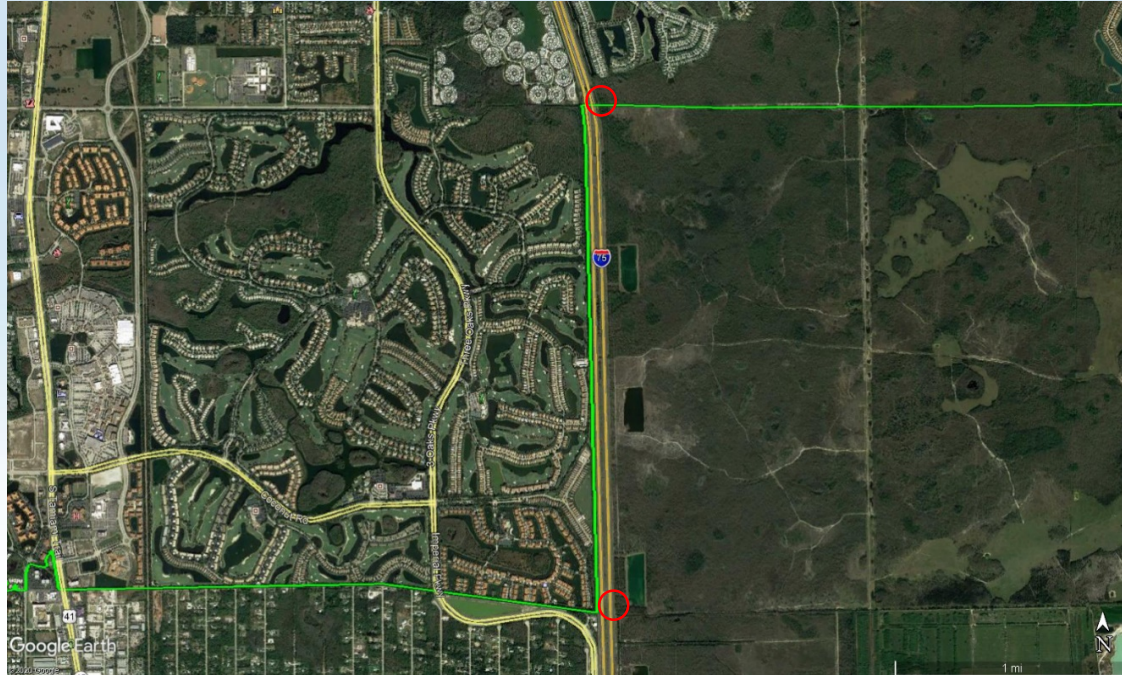
# I 75 North







# I 75 South



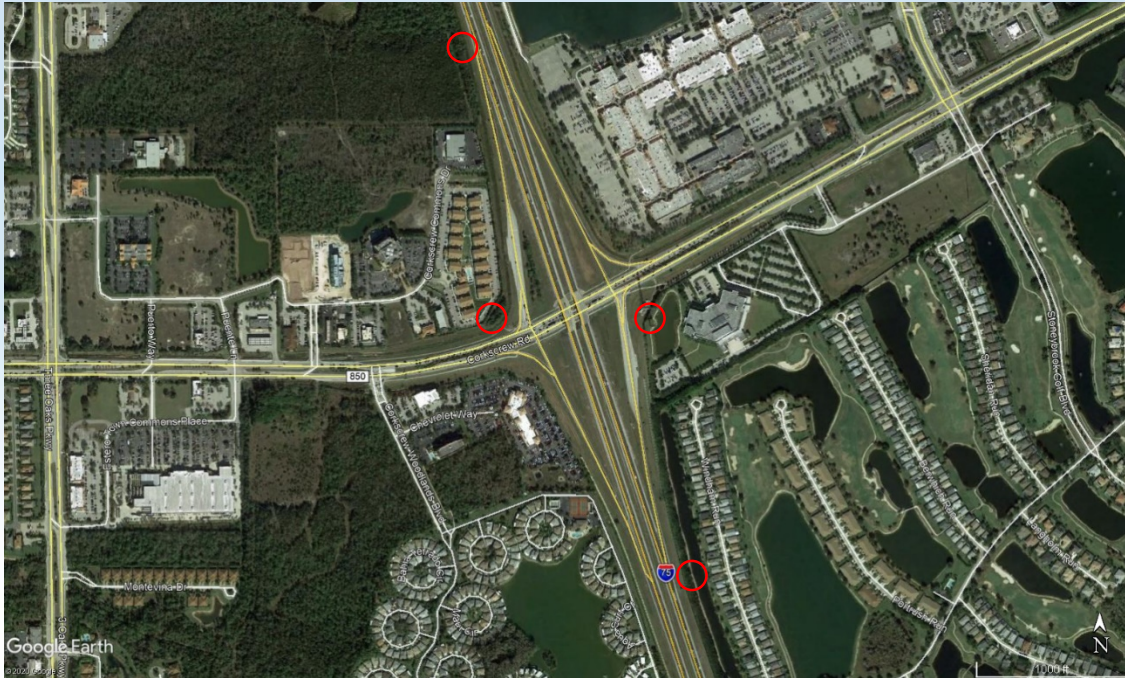


# I 75 South





# I 75 Interchange







# I 75 Interchange East







# I 75 Interchange West





# I 75 Interchange NB Ramp





# I 75 Interchange SB Ramp





# Recommended Order

1. Three Oaks Parkway South
  - a) Fewest questions/unknowns
2. US 41 South
  - a) Coordination with Coconut Point may be required
3. US 41 North
  - a) Coordinate with Breckenridge will take time
4. Three Oaks North
  - a) Is this the correct location?





# QUESTIONS?