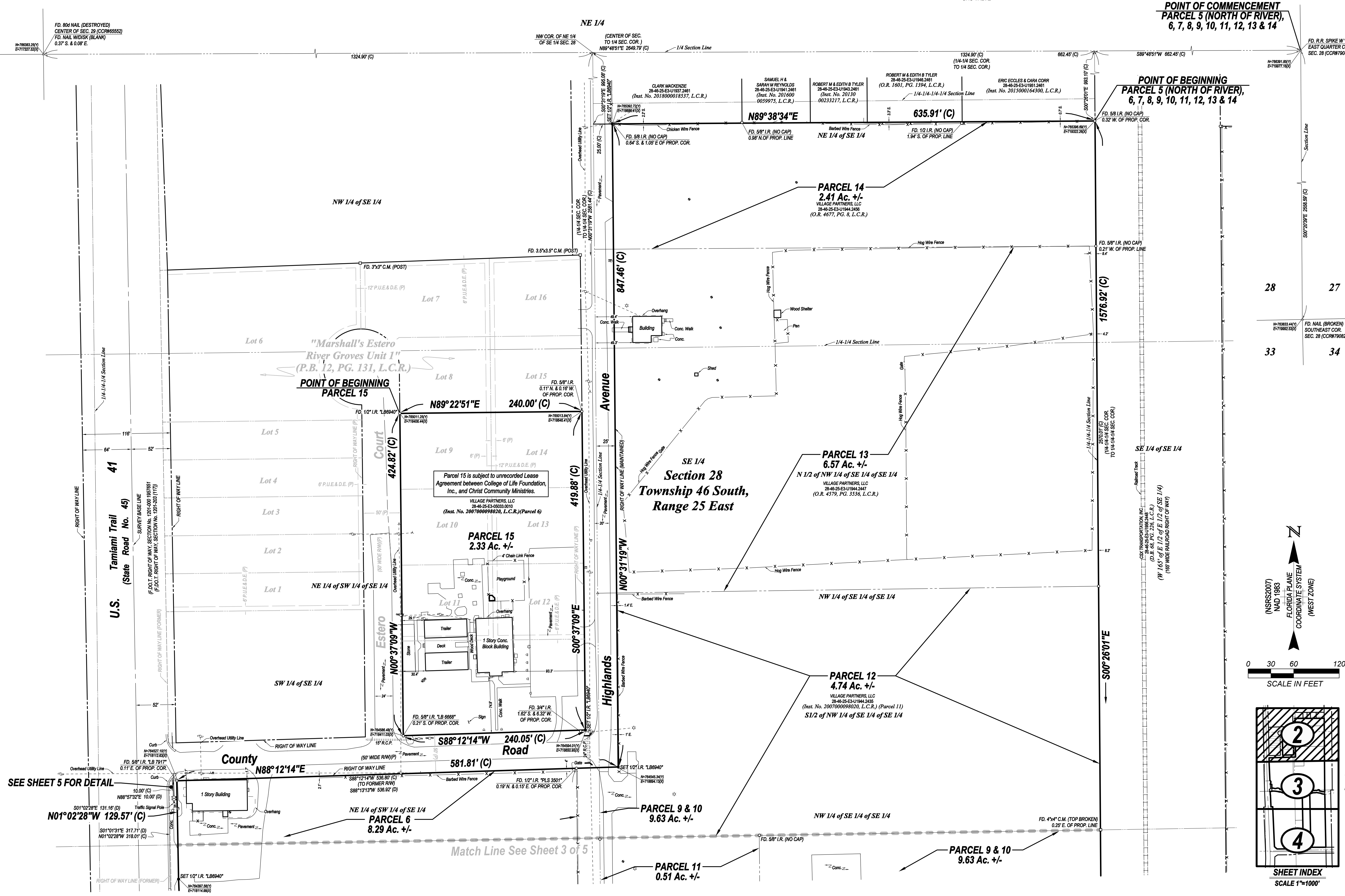


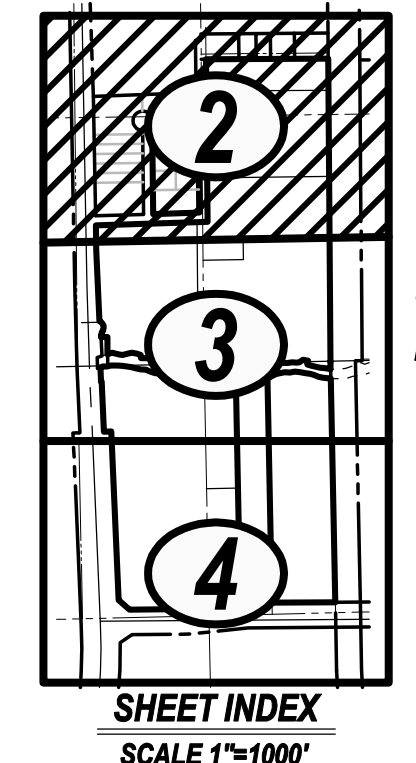
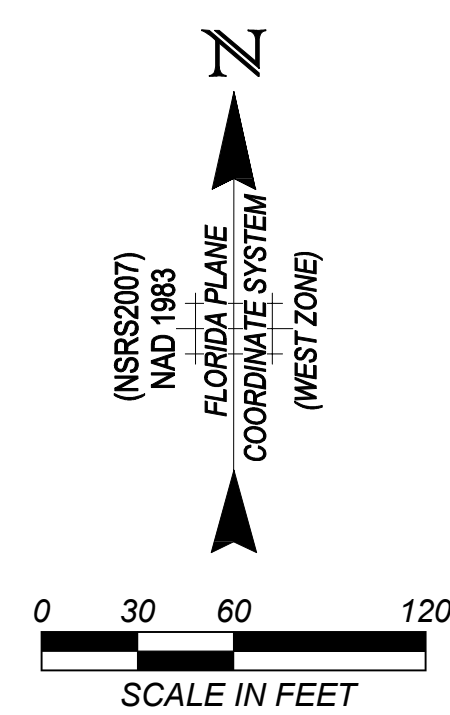
LEGEND:

A.E. ACCESS EASEMENT	Δ= DELTA ANGLE=	INST. INSTRUMENT	L.M.E. LAKE MAINTENANCE	P.V.C. PLASTIC PIPE	▲ SET "MAG" NAIL WITH DISC STAMPED LB6940	⊙ FLOOD LIGHT	⊙ AIR RELEASE VALVE
B.M. BENCHMARK	(D) DEED	I.P. IRON PIPE	EASEMENT	P.U.E. PUBLIC UTILITY EASEMENT	● SET 1/2" IRON ROD WITH CAP STAMPED LB6940	⊙ CONCRETE POWER POLE	⊙ IRRIGATION VALVE
(C) CALCULATED	D.B. DEED BOOK	I.R. IRON ROD	(M) MEASURED	R= RADIUS=	■ SET 4"x4" CONC. MONUMENT STAMPED LB6940	⊙ WOOD POWER POLE	⊙ WELL
CCR# CERTIFIED CORNER RECORD	D.E. DRAINAGE EASEMENT	L= LENGTH=	O.R. OFFICIAL RECORD BOOK	R.C.P. REINFORCED CONCRETE PIPE	□ FOUND NAIL AS NOTED	⊙ GUY ANCHOR	⊙ SANITARY MANHOLE
CL. CENTER LINE	EL. ELEVATION	L.A.E. LAKE ACCESS EASEMENT	(P) PLAT	REF. REFERENCE	□ FOUND CONC. MONUMENT AS NOTED	⊙ TELEPHONE BOX	⊙ SANITARY SERVICE
CONC. CONCRETE	FD. FOUND	L.B. LICENSED BUSINESS	P.B. PLAT BOOK	R/W. RIGHT OF WAY	□ FOUND IRON PIPE OR IRON ROD AS NOTED	⊙ ELECTRIC BOX	⊙ SIGN
CB= CHORD BEARING=	F.D.O.T. FLORIDA DEPARTMENT OF TRANSPORTATION	L.B.E. LANDSCAPE BUFFER	P.G. PAGE	TYP. TYPICAL	⊙ DRAINAGE INLET	⊙ CABLE TV BOX	⊙ MAIL BOX
CD= CHORD DISTANCE=	F.P. & L. FLORIDA POWER & LIGHT CO.	EASEMENT	P.K. PARKER-KALON	SEC. SECTION	⊙ DRAINAGE MANHOLE	⊙ WATER VALVE	⊙ BLOW OFF
CH= CHORD BEARING & DISTANCE=	FRAC. FRACTION	L.C.R. LEE COUNTY RECORDS	P.R.M. PERMANENT REFERENCE MONUMENT	W/ WITH	⊙ MITERED END SECTION	⊙ WATER BOX	⊙ FIBER OPTIC CABLE MARKER
C.M. CONCRETE MONUMENT	I.E. IRRIGATION EASEMENT	L.C.U.E. LEE COUNTY UTILITY EASEMENT	PROP. PROPERTY	WIT. WITNESS	• YARD DRAIN	⊙ FIRE HYDRANT	⊙ GAS LINE MARKER
COR. CORNER					⊙ LIGHT POLE	⊙ BACK FLOW ASSEMBLY	⊙ GAS VALVE



**POINT OF COMMENCEMENT
PARCEL 5 (NORTH OF RIVER),
6, 7, 8, 9, 10, 11, 12, 13 & 14**

**POINT OF BEGINNING
PARCEL 5 (NORTH OF RIVER),
6, 7, 8, 9, 10, 11, 12, 13 & 14**



Barraco
and Associates, Inc.
CIVIL ENGINEERING - LAND SURVEYING
LAND PLANNING
www.barraco.net
2271 MCGREGOR BLVD., SUITE 100
FORT MYERS, FLORIDA 33902-2800
PHONE (239) 461-3170
FAX (239) 461-3169

FLORIDA CERTIFICATE OF AUTHORIZATION
ENGINEERING 7995 - SURVEYING LB-6940
PREPARED FOR
THE TRUST FOR PUBLIC LAND
306 NORTH MONROE STREET
TALLAHASSEE, FL 32320
PHONE (850) 222-7911
WWW.TPL.ORG

**A PARCEL OF LAND IN
SECTIONS 28 AND 33,
TOWNSHIP 46 SOUTH,
RANGE 25 EAST,
VILLAGE OF ESTERO,
LEE COUNTY, FLORIDA**

PROJECT SURVEYOR

NOT VALID WITHOUT THE SIGNATURE
AND THE ORIGINAL RAISED SEAL OF A
FLORIDA LICENSED SURVEYOR AND MAPPER

FILE NAME	23725501.DWG
LAYOUT	2
LOCATION	J:\23725501\DWG\SURVEYING
PLOT DATE	TUE. 12-4-2018 - 4:37 PM
PLOT BY	PETER OLSEN

DRAWING DATA	
SURVEY DATE	11-29-2018
DRAWN BY	P. OLSEN
CHECKED BY	SAW
SCALE	1"=60'
FIELD BOOK	

PLAN REVISIONS	

ALTA/NSPS LAND TITLE SURVEY (BOUNDARY SURVEY)	
PROJECT / FILE NO.	SHEET NUMBER
23725	2 OF 5
28-46-25	