

CIP Project Summary
Corkscrew Rd/Three Oaks Pkwy Intersection Improvements

CIP Category: Intersection

Design :	\$	78,000.00
Construction :	\$	352,200.00
Total:	\$	430,200.00

Project Description:

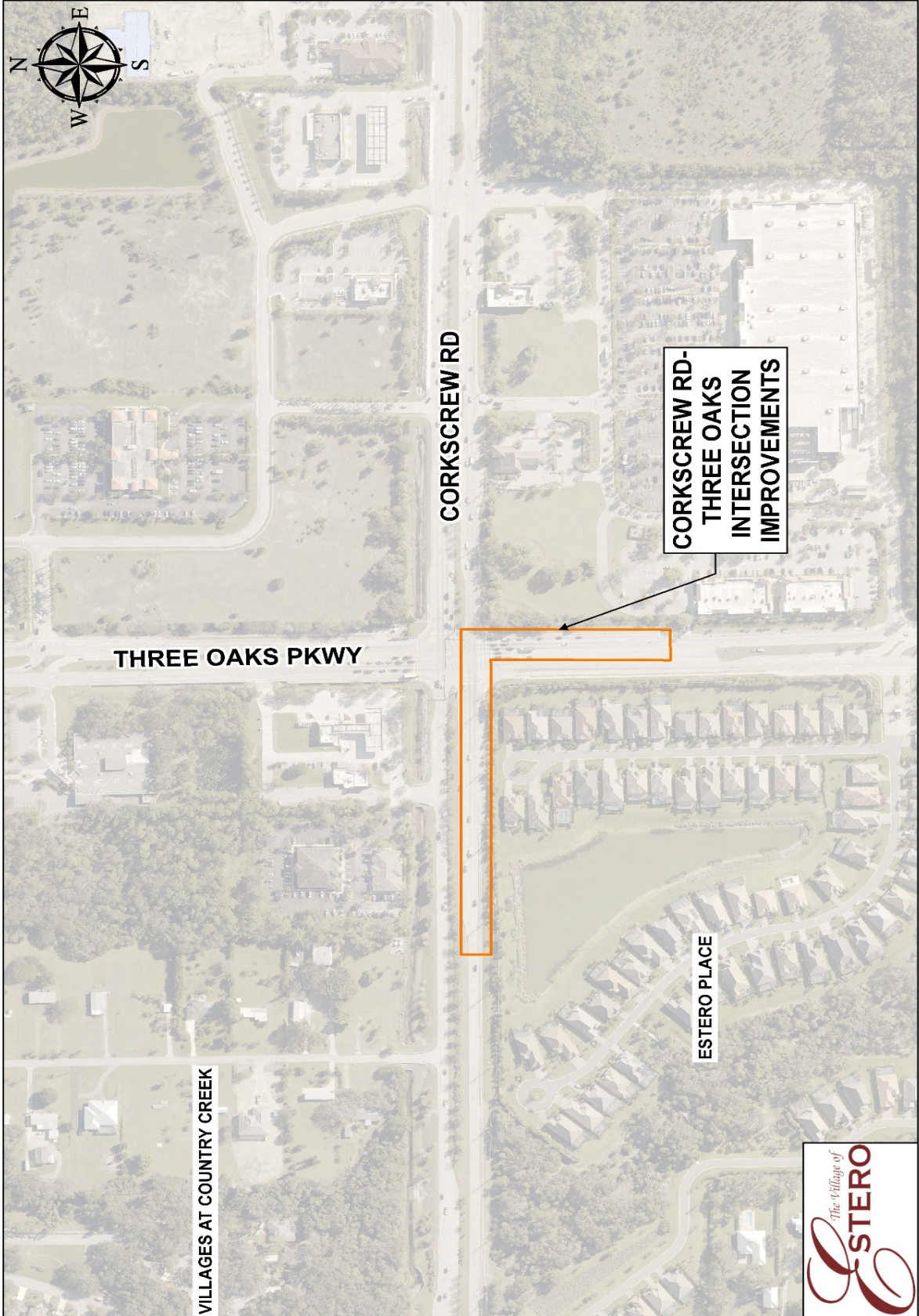
Construct intersection improvements at Corkscrew Road and Three Oaks Parkway. Improvements will include the following:

Extend eastbound left turn lanes by 600LF.

Extend northbound right turn and add second northbound right turn.

Project Justification:

As outlined in the Village Wide Traffic Study, at times of higher traffic volumes, there is insufficient stacking and capacity on Three Oaks Parkway for north bound right turn and on Corkscrew Road for east bound left turn. These improvements will improve the flow of traffic through the intersection and reduce traffic delays.



THREE OAKS PKWY

CORKSCREW RD

CORKSCREW RD-THREE OAKS INTERSECTION IMPROVEMENTS

ESTERO PLACE

VILLAGES AT COUNTRY CREEK

