

CIP Project Summary Monument Signs

CIP Category: Landscape

Design : See Below
 Construction : See Below
 Total: See Below

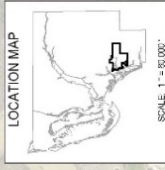
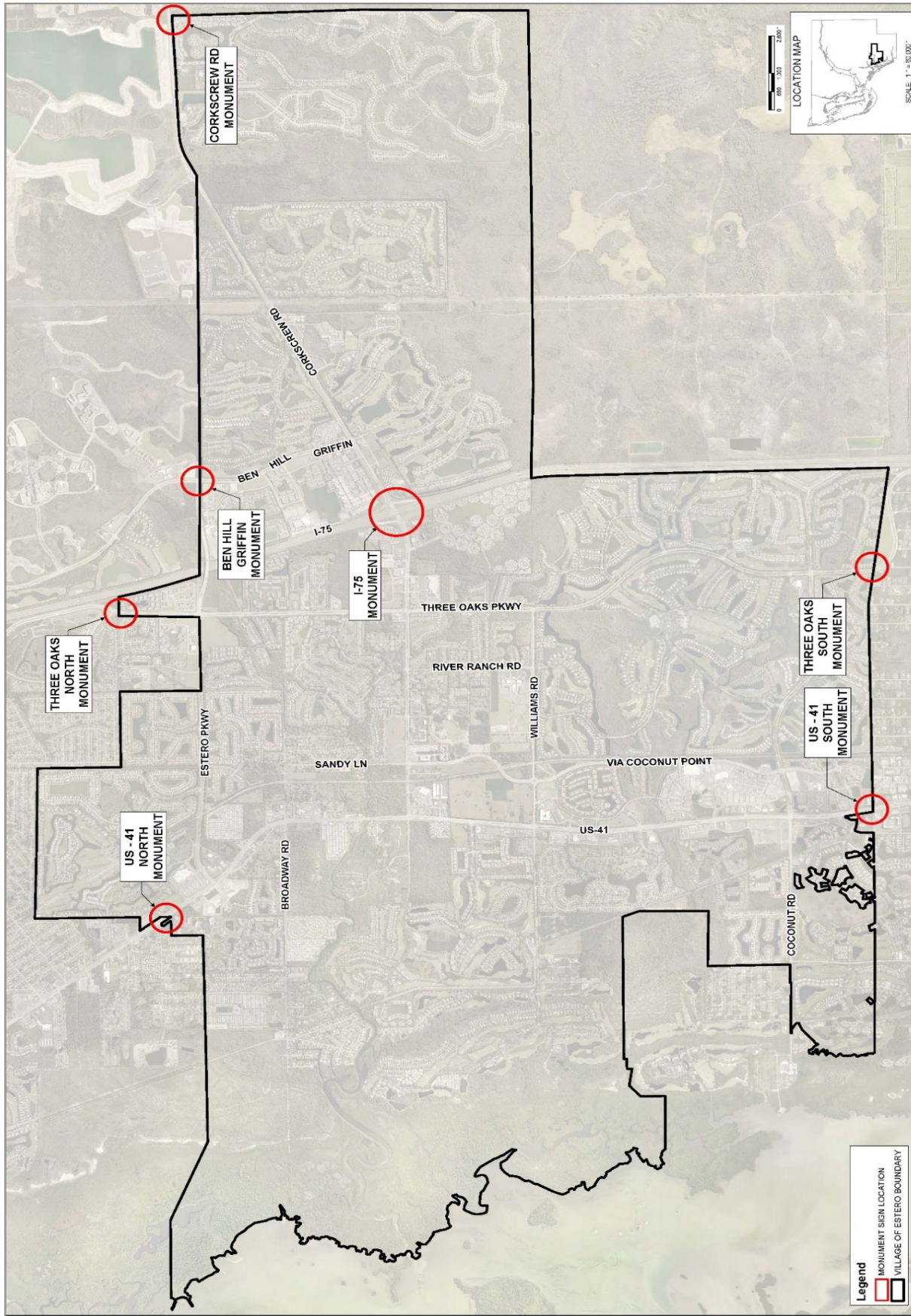
Project Description:

Install monument signs at various locations around Estero.

Project Justification:

To identify the Village of Estero limits, monument signs are required at entry points around Estero.

Cost Estimate						
Design						
Item		Description	Quantity	Unit	Unit Cost	Total Cost
US-41						
1		Design	1	LS	\$ 20,000.00	\$ 20,000.00
2		Monument Entry Signs	2	EA	\$ 50,000.00	\$ 100,000.00
Sub-total						\$ 120,000.00
Total (including 20% Contingency)						\$ 144,000.00
I-75						
1		Design	1	LS	\$ 35,000.00	\$ 35,000.00
2		Monument Entry Signs	2	EA	\$ 70,000.00	\$ 140,000.00
Sub-total						\$ 175,000.00
Total (including 20% Contingency)						\$ 210,000.00
Three Oaks Parkway						
1		Design	1	LS	\$ 15,000.00	\$ 15,000.00
2		Monument Entry Signs	2	EA	\$ 50,000.00	\$ 100,000.00
Sub-total						\$ 115,000.00
Total (including 20% Contingency)						\$ 138,000.00
Ben Hill Griffin Parkway						
1		Design	1	LS	\$ 10,000.00	\$ 10,000.00
2		Monument Entry Signs	1	EA	\$ 50,000.00	\$ 50,000.00
Sub-total						\$ 60,000.00
Total (including 20% Contingency)						\$ 72,000.00
Corkscrew Road						
1		Design	1	LS	\$ 10,000.00	\$ 10,000.00
2		Monument Entry Signs	1	EA	\$ 50,000.00	\$ 50,000.00
Sub-total						\$ 60,000.00
Total (including 20% Contingency)						\$ 72,000.00



SCALE: 1" = 1,000'
 DRAWN BY: EJR
 CHECKED BY: [blank]
 DATE: 1/28/2020
 SHEET: 1 of 1

CAPITAL IMPROVEMENT PROGRAM MONUMENT SIGN LOCATIONS
 VILLAGE OF ESTERO \ FLORIDA

NOTES:
 1. SEE AERIAL IMAGES FROM LEE COUNTY
 2. COORDINATE SYSTEM: NAD 83 UTM 18Q UTM ZONE 18Q UTM FLORIDA WEST 18Q 3812 18T

Legend

- MONUMENT SIGN LOCATION
- VILLAGE OF ESTERO BOUNDARY

3401 CORKSCREW PALMS CIRCLE
 ESTERO, FL 33426
 P: 239.221.5035
 M: 239.221.5035
 WWW.ESTEROFL.GOV