

Legend

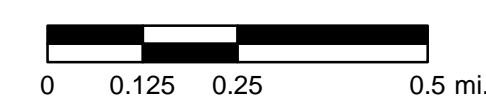
- Panel
- Village Boundary
- Roads
- Added to Floodway
- Added to AE



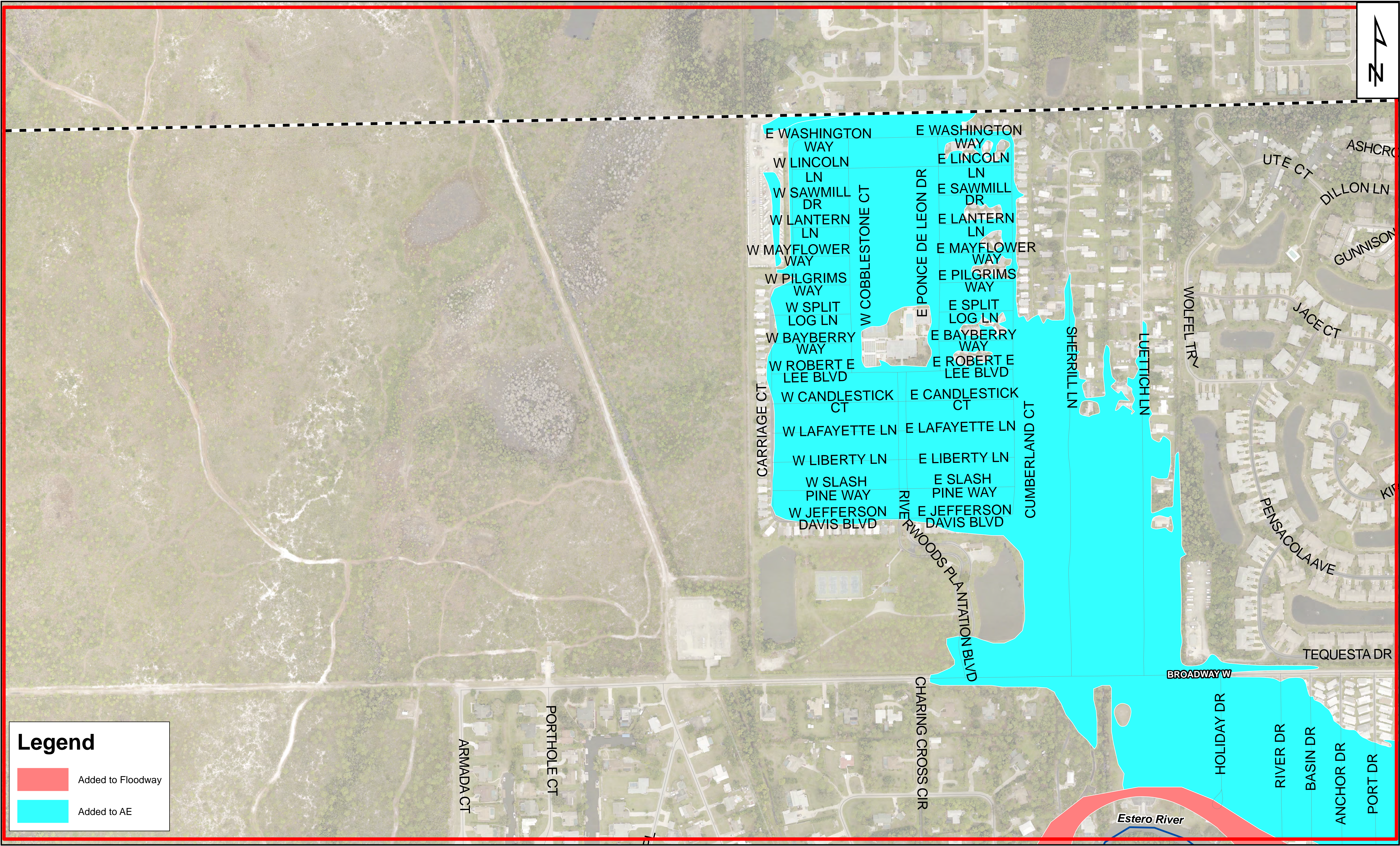
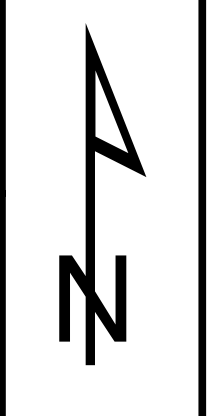
9401 CORKSCREW PALMS CIRCLE
 ESTERO, FL 33928
 P: 239.221.5035
<http://estero-fl.gov>

AREAS ADDED TO FLOOD ZONES
 VILLAGE OF ESTERO - FLORIDA

SCALE: 1" = 0.25 mi.



EFFECTIVE 11/17/22



Legend

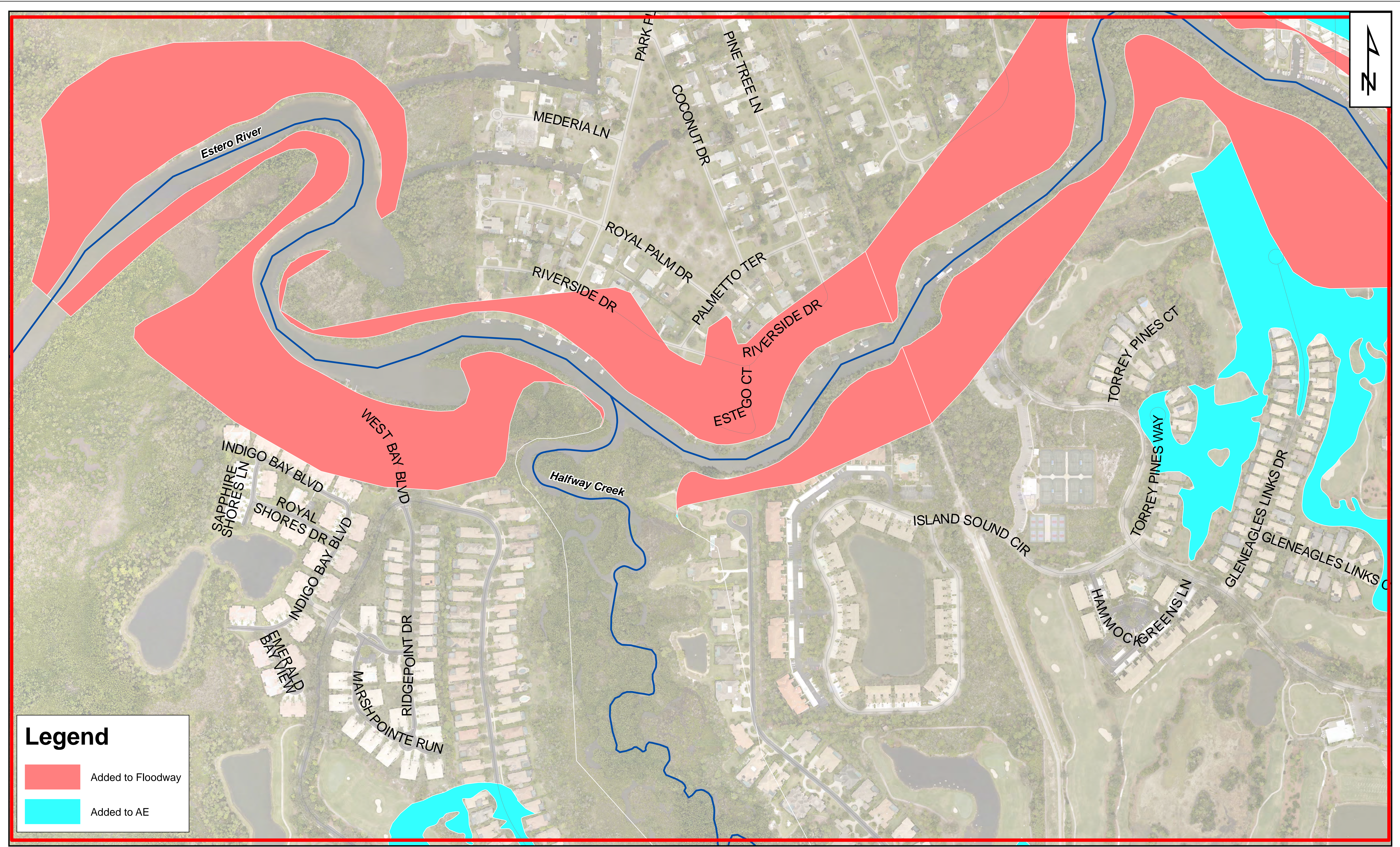
- Added to Floodway
- Added to AE



9401 CORKSCREW PALMS CIRCLE
 ESTERO, FL 33928
 P: 239.221.5035
<http://estero-fl.gov>

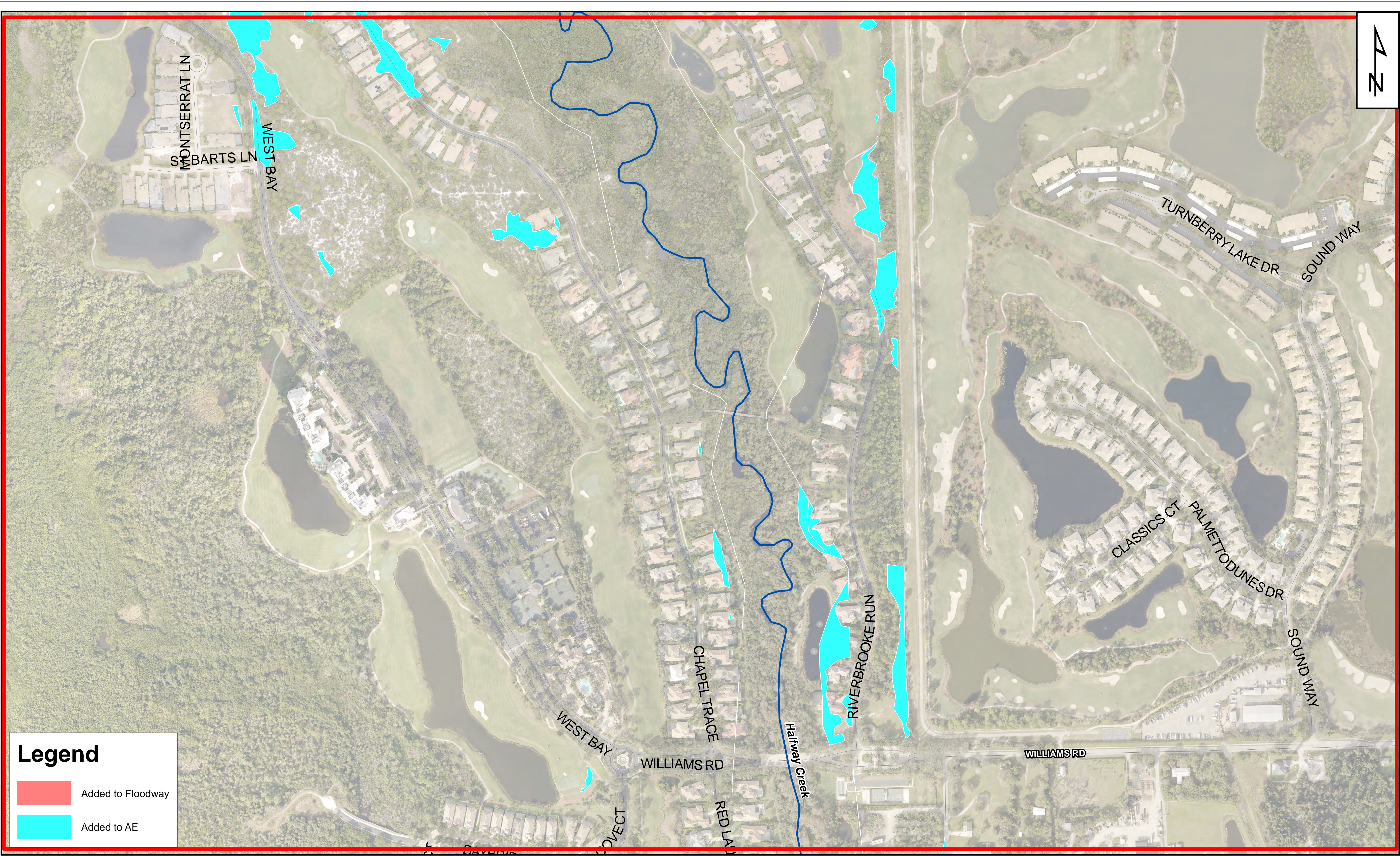
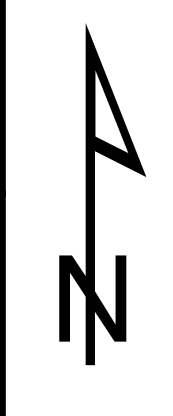
AREAS ADDED TO FLOOD ZONES - PANEL 1
 VILLAGE OF ESTERO - FLORIDA

EFFECTIVE 11/17/22





Legend

- Added to Floodway
- Added to AE



Legend

-  Added to Floodway
-  Added to AE

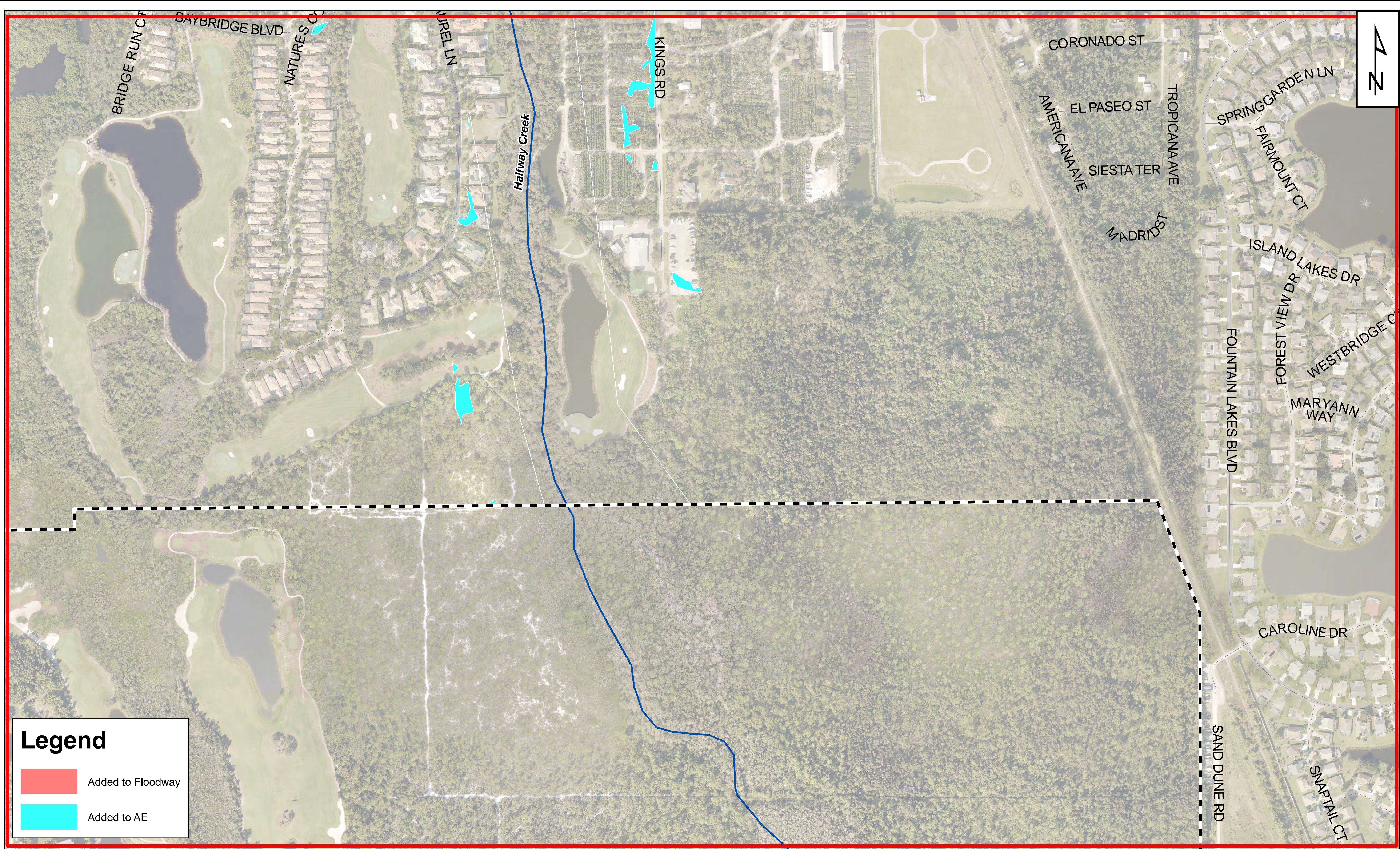


9401 CORKSCREW PALMS CIRCLE
ESTERO, FL 33928
P: 239.221.5035
<http://estero-fl.gov>

AREAS ADDED TO FLOOD ZONES - PANEL 3

VILLAGE OF ESTERO - FLORIDA

EFFECTIVE 11/17/22



Legend

- Added to Floodway
- Added to AE

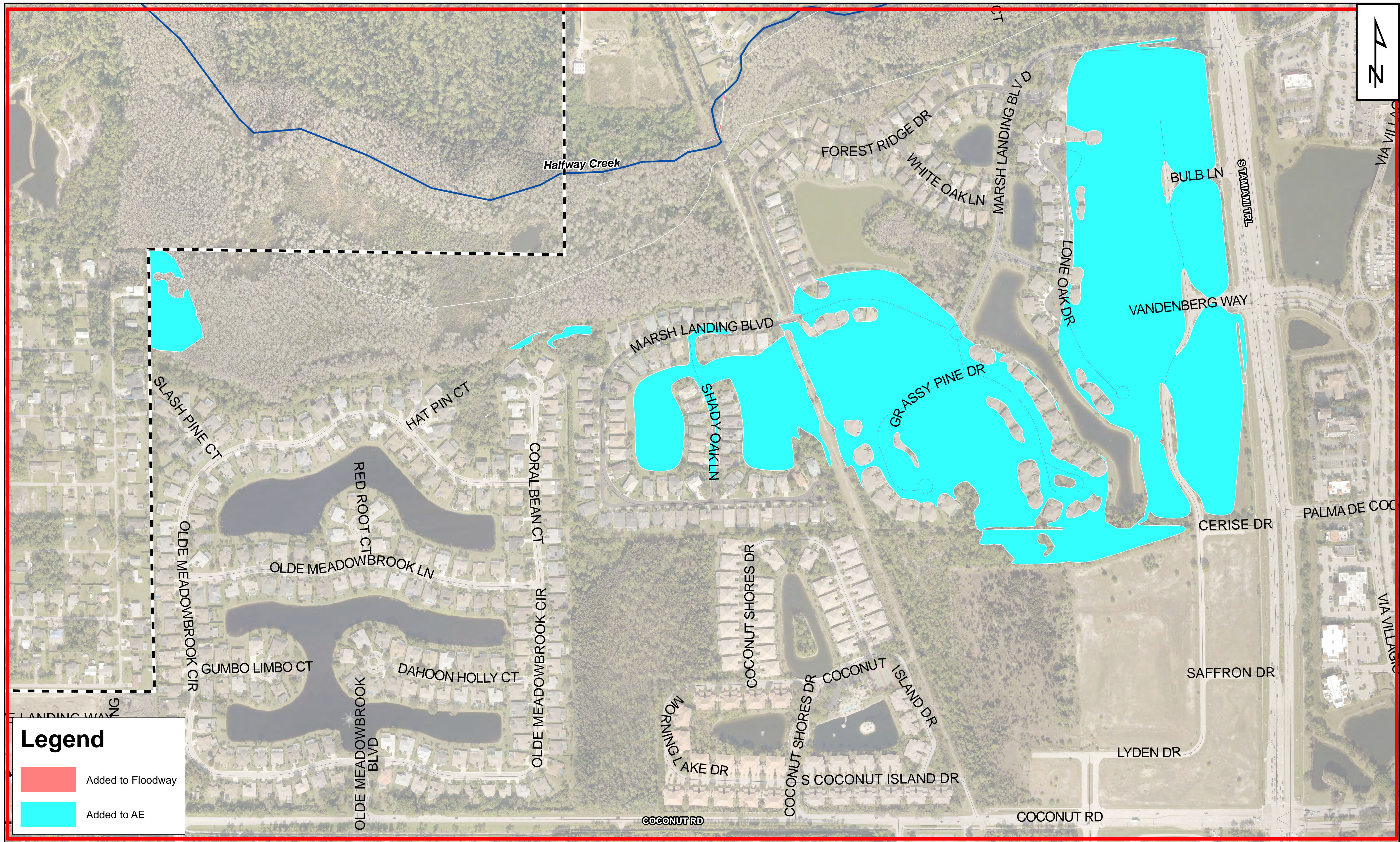


Village of
ESTERO

9401 CORKSCREW PALMS CIRCLE
ESTERO, FL 33928
P: 239.221.5035
<http://estero-fl.gov>

AREAS ADDED TO FLOOD ZONES - PANEL 4
VILLAGE OF ESTERO - FLORIDA

EFFECTIVE 11/17/22



Legend

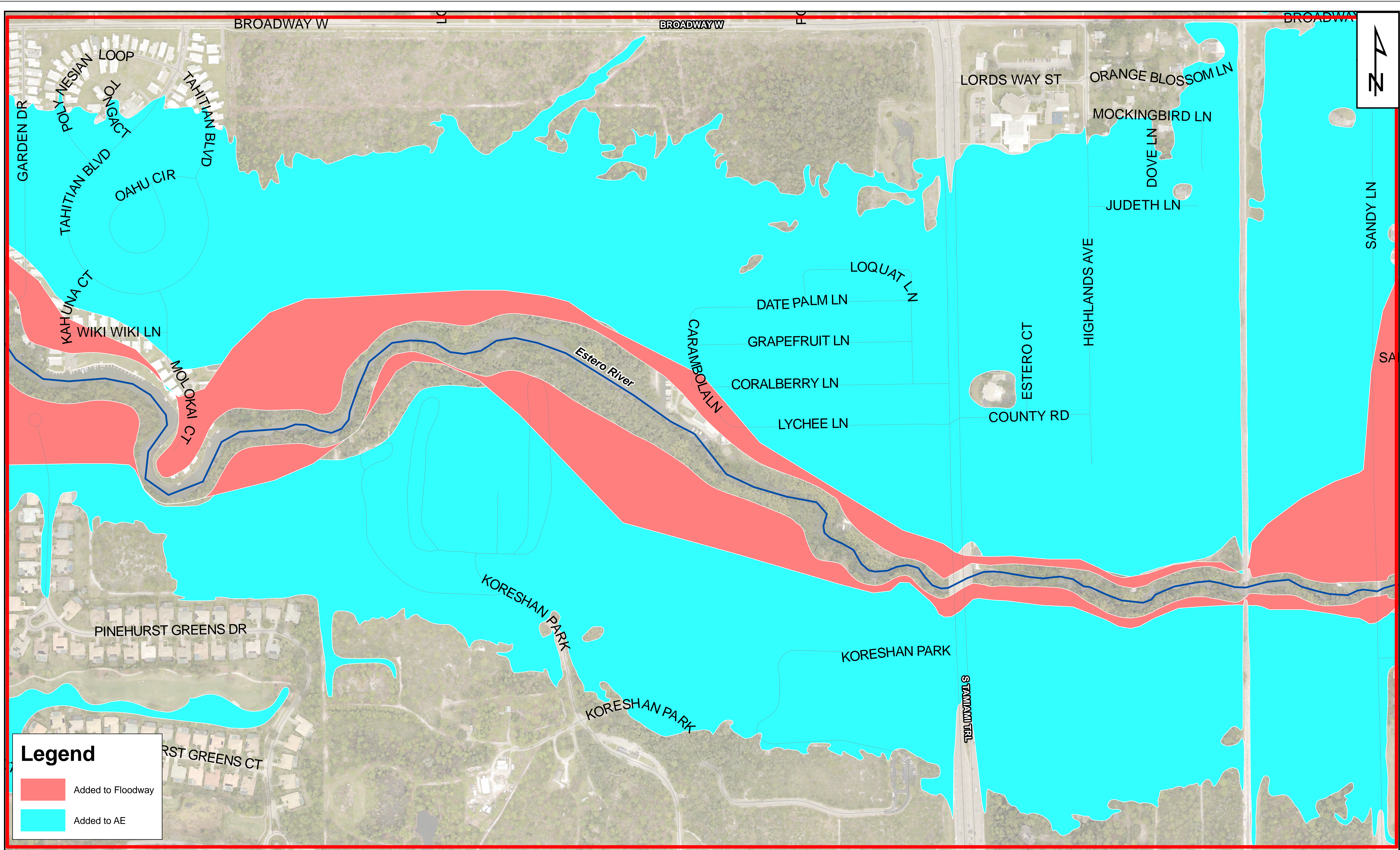
- Added to Floodway
- Added to AE



9401 CORKSCREW PALMS CIRCLE
 ESTERO, FL 33928
 P: 239.221.5035
<http://estero-fl.gov>

AREAS ADDED TO FLOOD ZONES - PANEL 5
 VILLAGE OF ESTERO - FLORIDA

EFFECTIVE 11/17/22



Legend

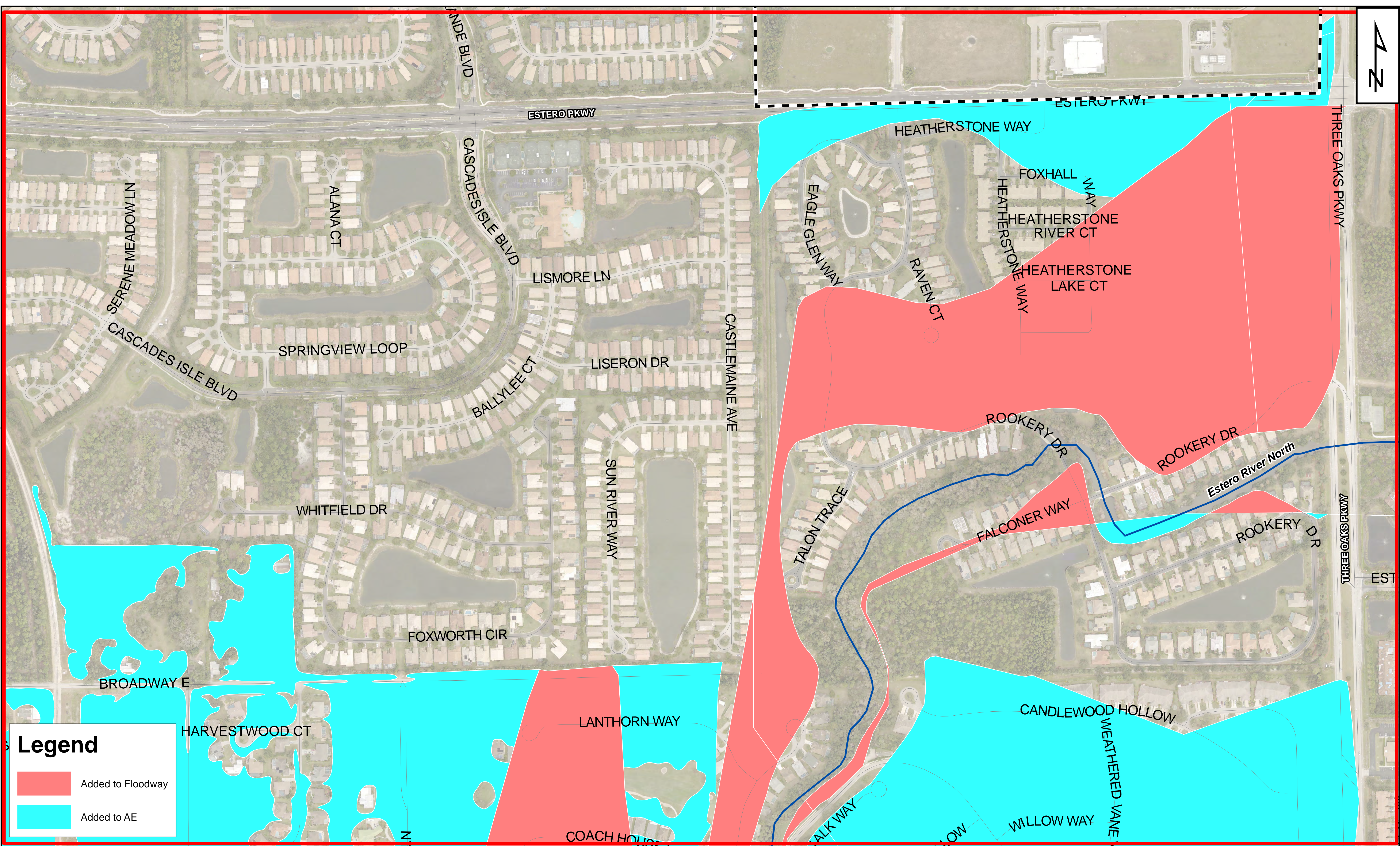
- Added to Floodway
- Added to AE



9401 CORKSCREW PALMS CIRCLE
 ESTERO, FL 33928
 P: 239.221.5035
<http://estero-fl.gov>

AREAS ADDED TO FLOOD ZONES - PANEL 6
 VILLAGE OF ESTERO - FLORIDA

EFFECTIVE 11/17/22



Legend

- Added to Floodway
- Added to AE



Village of
ESTERO

9401 CORKSCREW PALMS CIRCLE
ESTERO, FL 33928
P: 239.221.5035
<http://estero-fl.gov>

AREAS ADDED TO FLOOD ZONES - PANEL 7
VILLAGE OF ESTERO - FLORIDA

EFFECTIVE 11/17/22

