

Legend

- Panel
- Village Boundary
- Roads
- Removed from Floodway
- Removed from AE

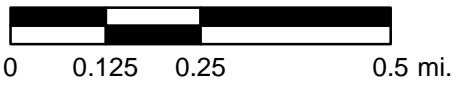


9401 CORKSCREW PALMS CIRCLE
 ESTERO, FL 33928
 P: 239.221.5035
<http://estero-fl.gov>

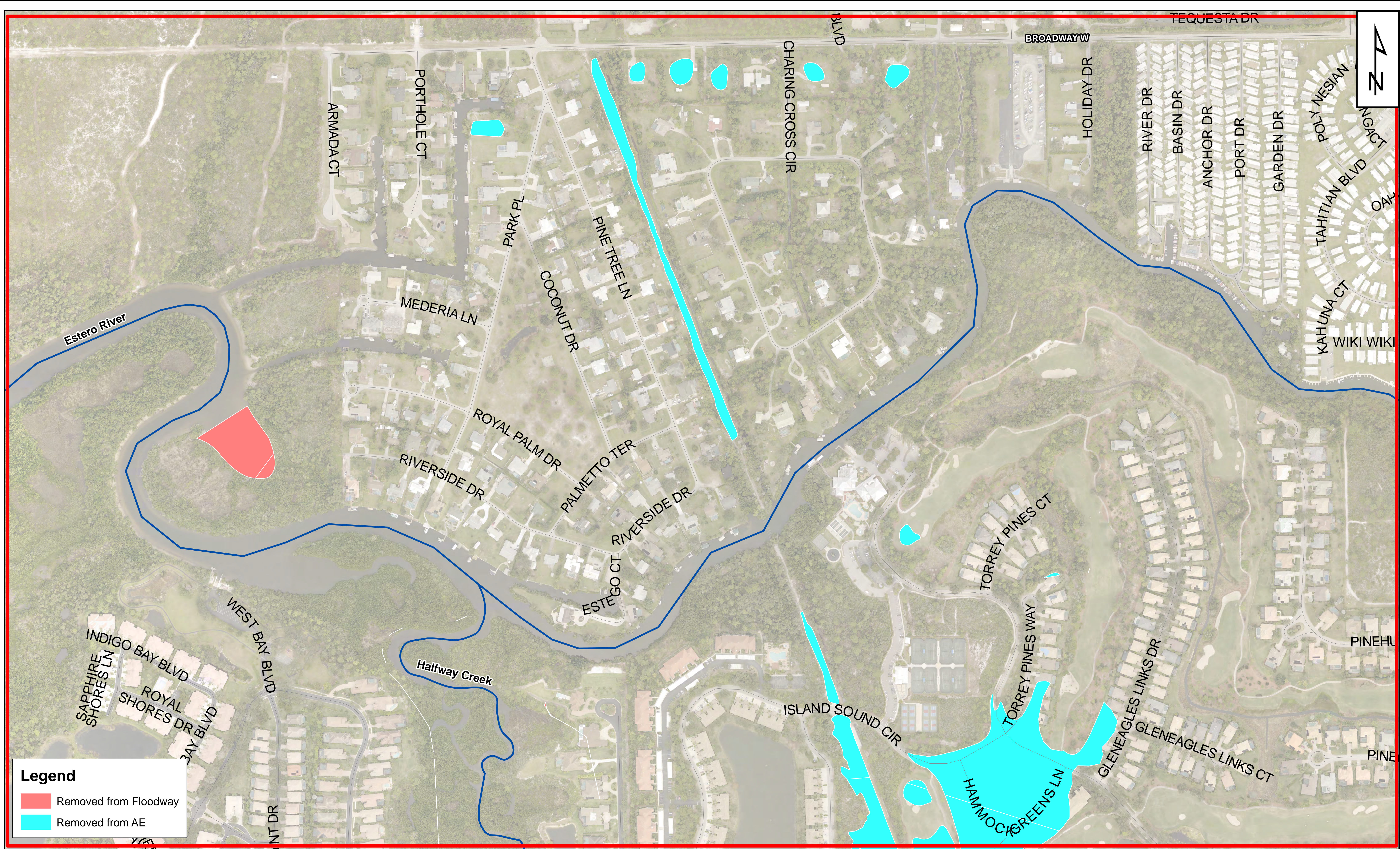
AREAS REMOVED FROM FLOOD ZONES

VILLAGE OF ESTERO - FLORIDA

SCALE: 1" = 0.25 mi.



EFFECTIVE 11/17/22



Legend

- Removed from Floodway
- Removed from AE

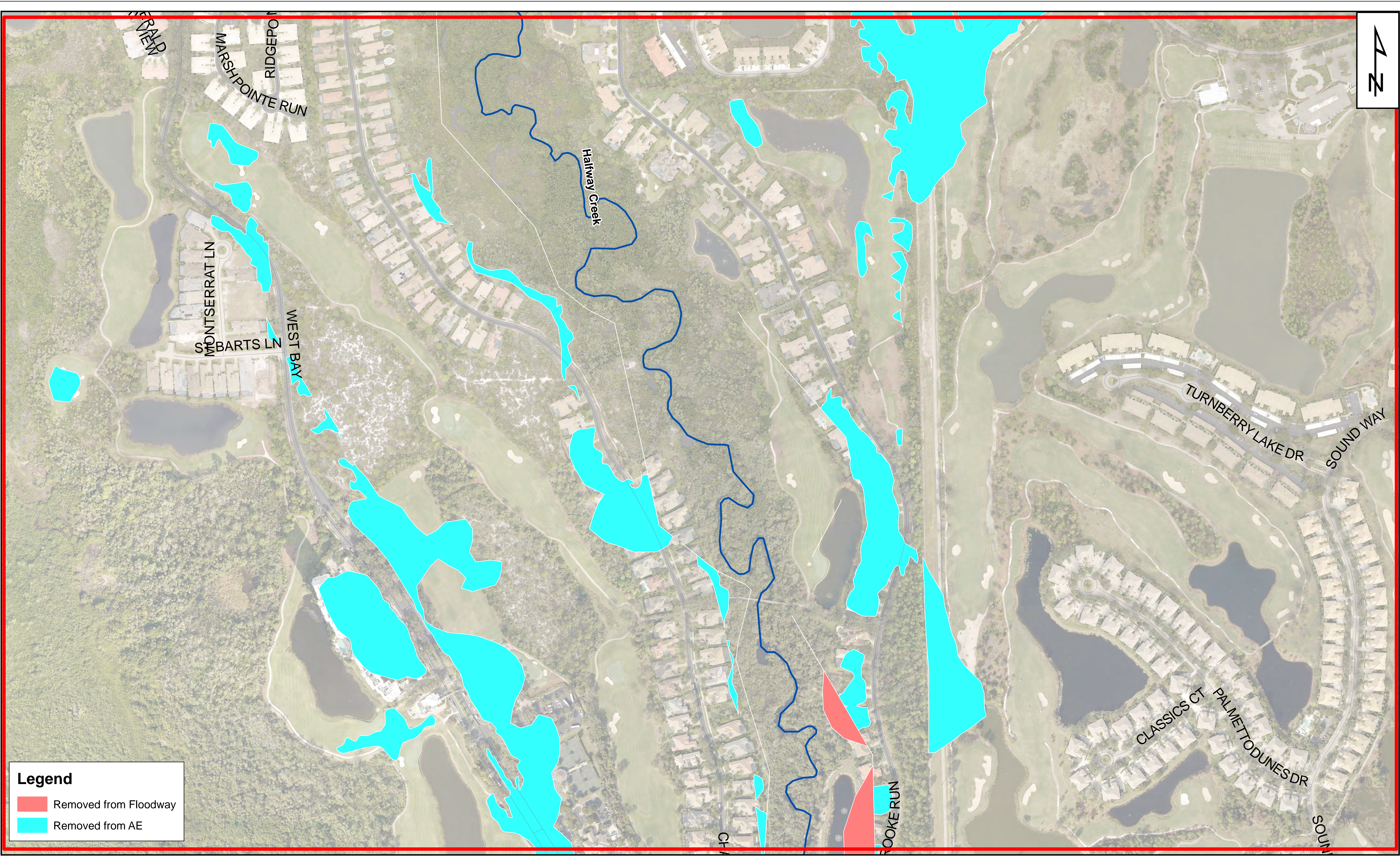
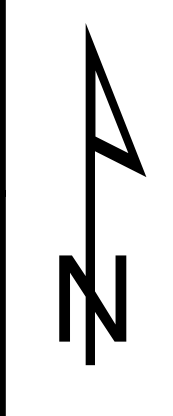


9401 CORKSCREW PALMS CIRCLE
 ESTERO, FL 33928
 P: 239.221.5035
<http://estero-fl.gov>

AREAS REMOVED FROM FLOOD ZONES - PANEL 1

VILLAGE OF ESTERO - FLORIDA

EFFECTIVE 11/17/22



Legend

- Removed from Floodway
- Removed from AE



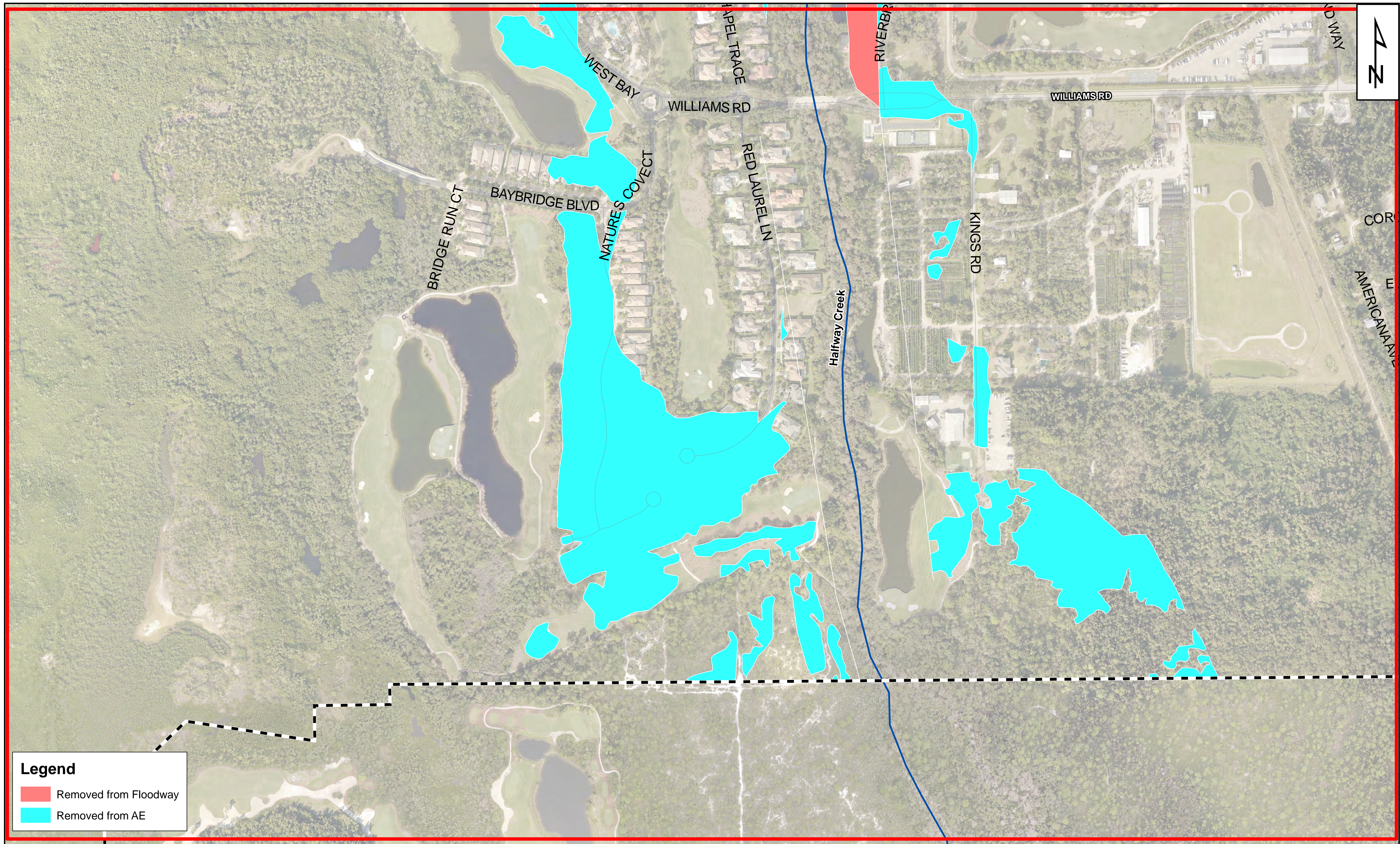
Village of
ESTERO

9401 CORKSCREW PALMS CIRCLE
ESTERO, FL 33928
P: 239.221.5035
<http://estero-fl.gov>

AREAS REMOVED FROM FLOOD ZONES - PANEL 2

VILLAGE OF ESTERO - FLORIDA

EFFECTIVE 11/17/22



Legend

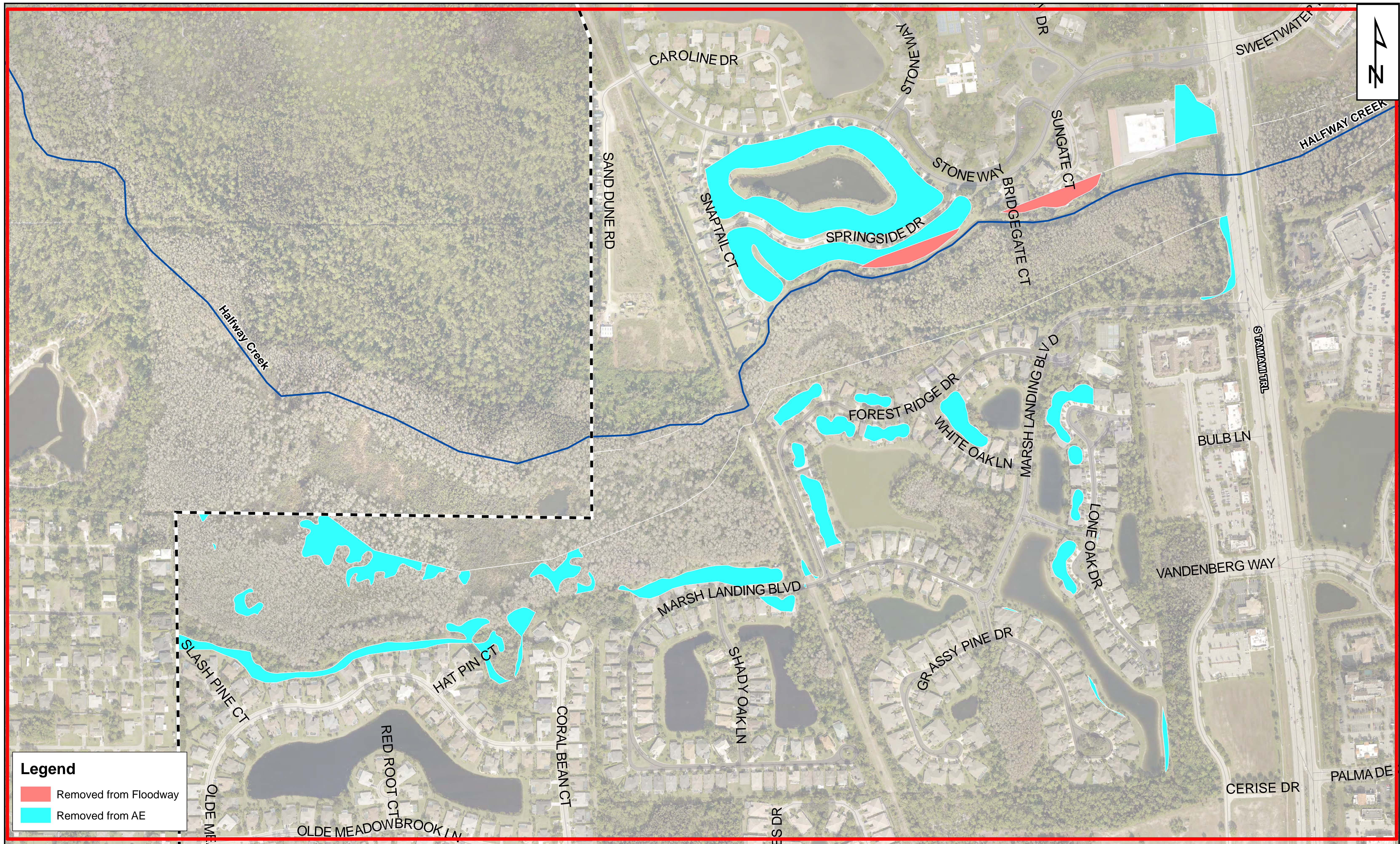
- Removed from Floodway
- Removed from AE



9401 CORKSCREW PALMS CIRCLE
 ESTERO, FL 33928
 P: 239.221.5035
<http://estero-fl.gov>

AREAS REMOVED FROM FLOOD ZONES - PANEL 3
 VILLAGE OF ESTERO - FLORIDA

EFFECTIVE 11/17/22



Legend

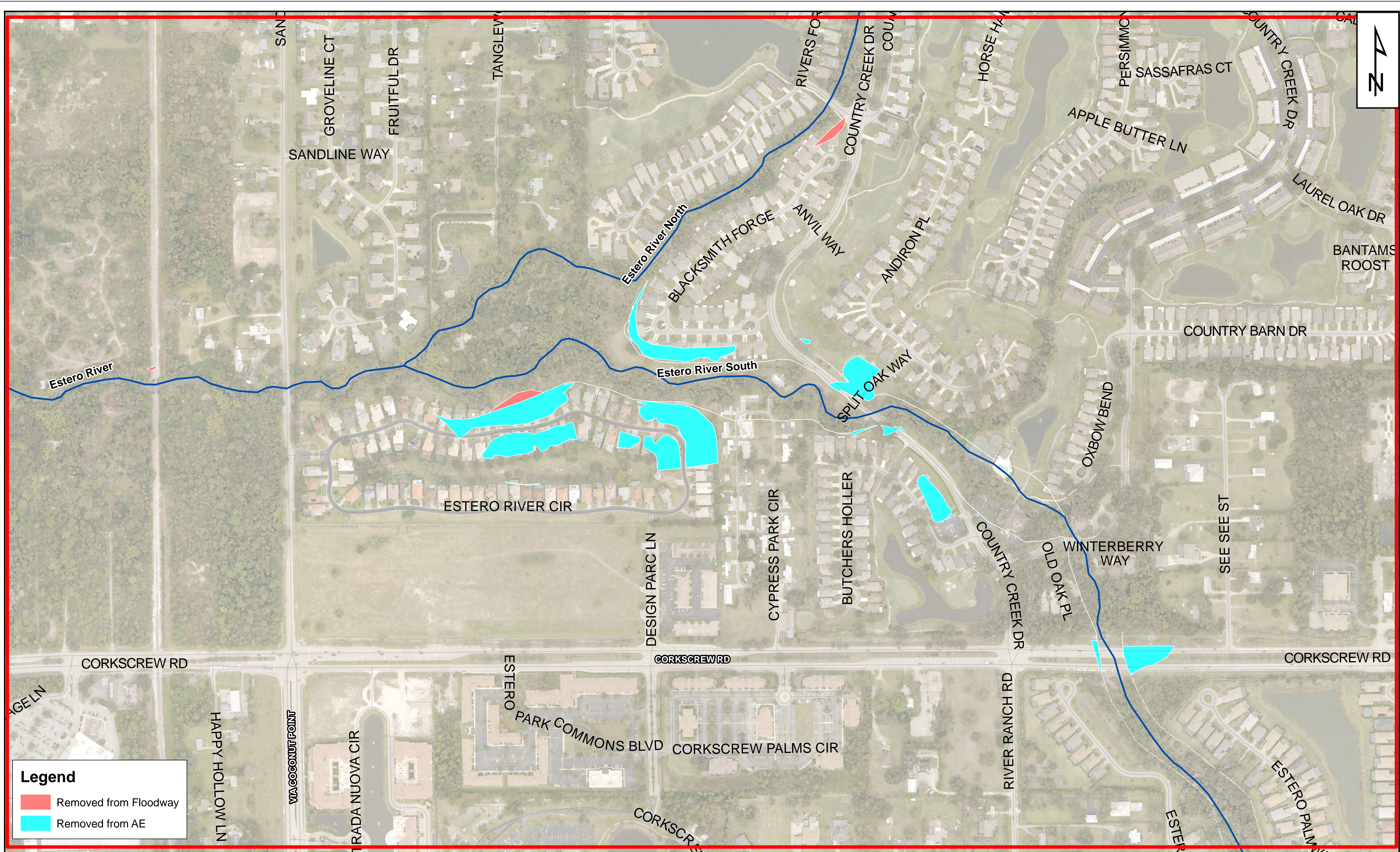
- Removed from Floodway
- Removed from AE



9401 CORKSCREW PALMS CIRCLE
ESTERO, FL 33928
P: 239.221.5035
<http://estero-fl.gov>

AREAS REMOVED FROM FLOOD ZONES - PANEL 4
VILLAGE OF ESTERO - FLORIDA

EFFECTIVE 11/17/22



9401 CORKSCREW PALMS CIRCLE
ESTERO, FL 33928
P: 239.221.5035
<http://estero-fl.gov>

AREAS REMOVED FROM FLOOD ZONES - PANEL 5
VILLAGE OF ESTERO - FLORIDA

EFFECTIVE 11/17/22