



Village of
ESTERO

HOW CAN YOU HELP PROTECT
ESTERO'S ENVIRONMENT?



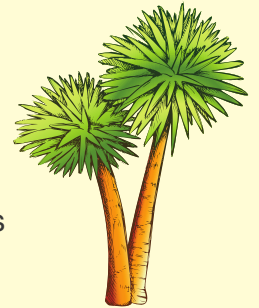
LANDSCAPE MAINTENANCE

How we maintain our home landscaping can contribute to the water quality issues we see in the Estero River, Estero Bay, and beyond. Installing appropriate plants and using appropriate maintenance practices can reduce our impact on the environment.

Here are some landscape maintenance recommendations to help you reduce your impact on the environment:

KEEP IT NATIVE

Use native or Florida Friendly landscape material as much as possible.



USE JUST ENOUGH

Apply only as much water and fertilizer to keep your lawn healthy. Lawns don't have to look green and lush all year long.



THE RIGHT TIME

Don't apply nitrogen or phosphorus containing fertilizer **June 1 – September 30.**



THE RIGHT PLACE

Be sure to place plants in the right location and around similar plants based on sunlight and watering needs.

LEARN FROM EXPERTS

Use the following links for more information.

Village of Estero

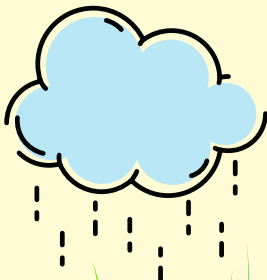
<https://estero-fl.gov/residents>

UF/IFAS Lawn & Garden

<http://sfyl.ifas.ufl.edu/lawn-and-garden>

Florida Friendly Landscaping Program

<https://ffl.ifas.ufl.edu>



RAIN WASHES AWAY FERTILIZER

Don't apply fertilizers when rain is in the forecast.