



PROJECT FACT SHEET

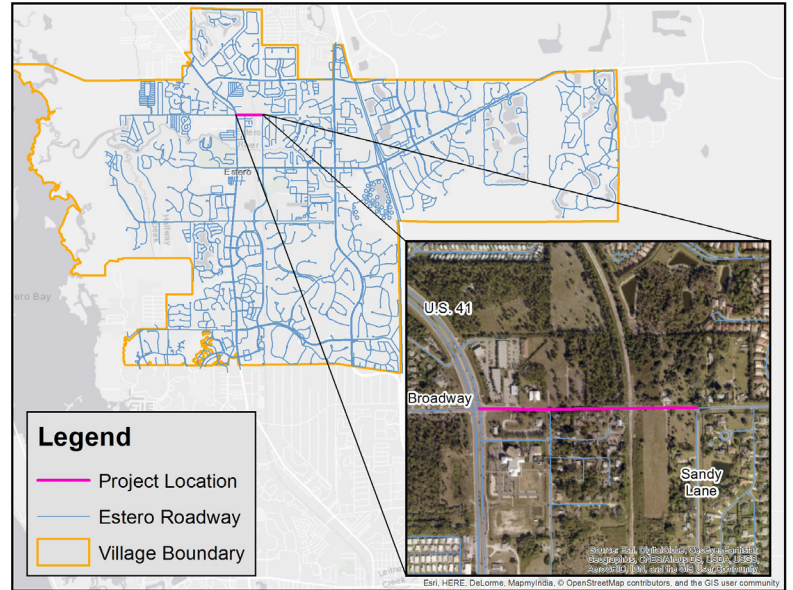
East Broadway

U.S. 41 to Sandy Lane

About the Enhancements on East Broadway

Currently there are no biking facilities or sidewalks on East Broadway. To improve bicycle and pedestrian connectivity and safety, a 12-foot shared use path on the south side, and a complete sidewalk connection to U.S. 41 on the north side are proposed. This project will also involve crossing an at-grade railroad property. Separating vehicles from bicyclists and pedestrians encourage more cyclists and walkers of all ages to use East Broadway.

The example cross sections below are intended to be illustrative and do not reflect engineering level details. The improvement costs reflect planning level estimates only and do not account for engineering detail.



Existing Conditions

Multimodal

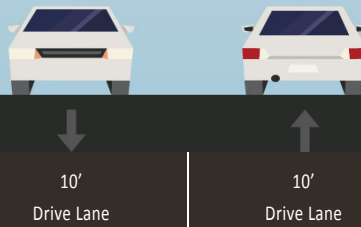
Bike Facilities: **None**
Sidewalks: **None**
Transit: **None**

Road

Type: **Minor Collector**
Number of Lanes: **2**
Avg. Lane Width: **10 feet**
Project Length: **0.40 miles**

Travel

Avg. Daily Traffic: **6,200**
Posted Speed Limit: **30 mph**



Proposed Enhancements

Bicycle & Pedestrian

12-foot shared use path on south side of road
6-foot sidewalk connection on North side of road
Refreshed pavement markings

Estimated Cost

\$288,000

Estimate does not reflect potential right-of-way or railroad impacts

