

GeoView Map

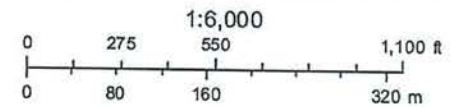


June 20, 2019

Air Photos: 2019 Hi-Res (4 inch)

- | | | |
|--|--|---|
|  Hospital Locations |  School Locations |  County Boundary |
|  Library Locations |  School Locations |  Downtown Government Bldgs |
| |  CCC_Parks |  Building Footprints Med |

County Parks



This map is NOT a legal land survey and should not be used or relied upon as such. No warranties, express or implied, are provided with the data, use, accuracy or interpretation.



BROADWAY WEST TO TRAILSIDE DR



TRAILSIDE DR TO BROADWAY WEST

GeoView Map

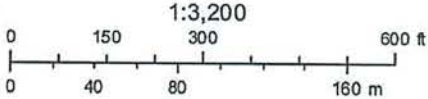


June 20, 2019

Air Photos: 2019 Hi-Res (4 inch)

-  Hospital Locations
-  Library Locations
- School Locations**
-  School Locations
-  CCC_Parks
-  County Boundary
-  Downtown Government Bldgs
-  Building Footprints Med

County Parks

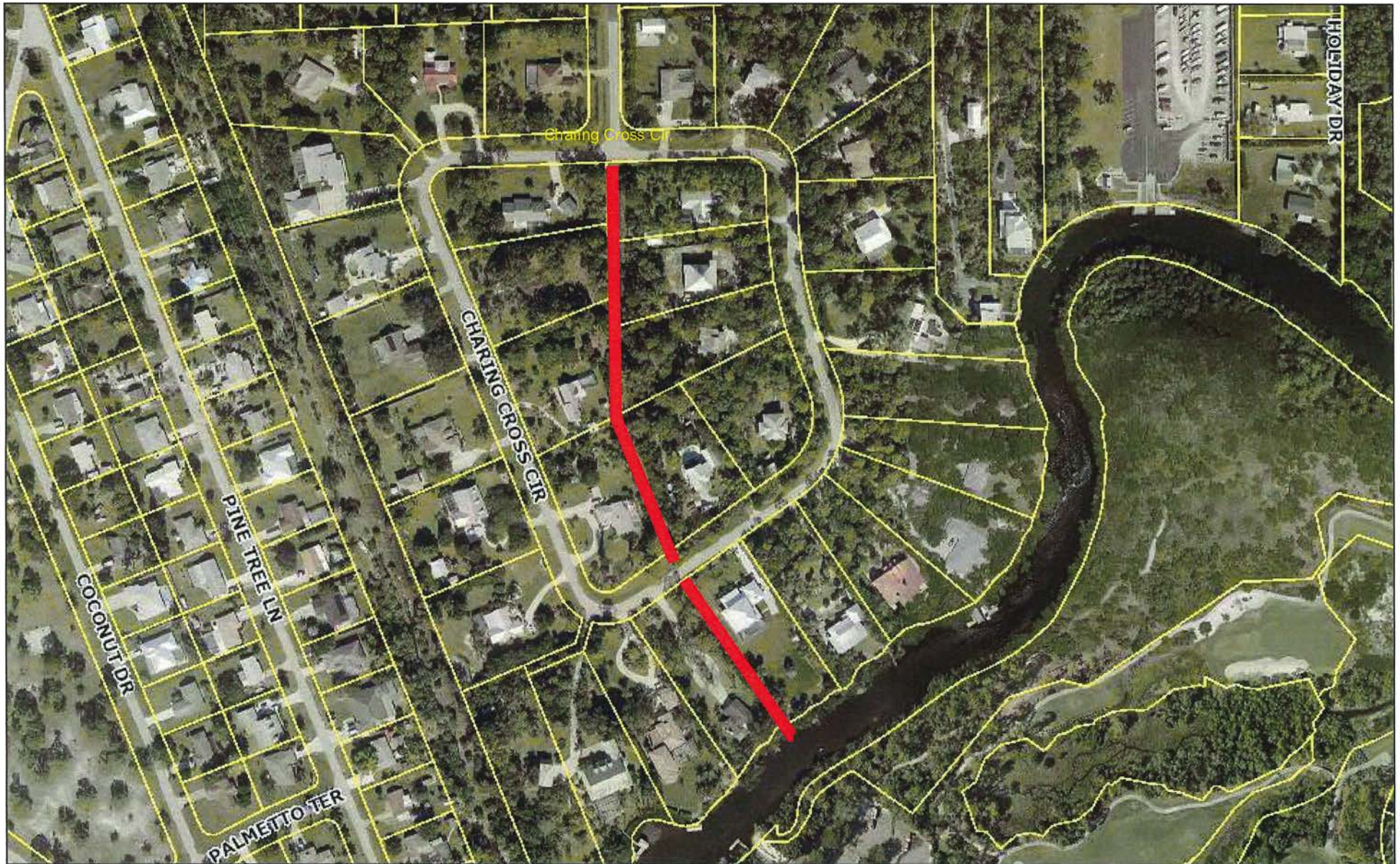


This map is NOT a legal land survey and should not be used or relied upon as such. No warranties, express or implied, are provided with the data, use, accuracy or interpretation.



BROADWAY WEST/RIVERWOOD BOAT RAMP

GeoView Map

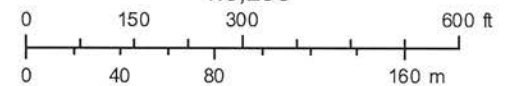


October 29, 2020

Air Photos: 2020 Hi-Res (4 inch)

1:3,200

- | | | | | |
|--------------------|------------------|-----------------|----------------|--------------|
| Hospital Locations | School Locations | County Boundary | US 41 | Parcels Near |
| Library Locations | School Locations | Major Roads | Other Highways | |
| CCC_Parks | I - 75 | Other Roads | | |



This map is NOT a legal land survey and should not be used or relied upon as such. No warranties, express or implied, are provided with the data, use, accuracy or interpretation.



CHARING CROSS CIRCLE



CHARING CROSS CIRCLE

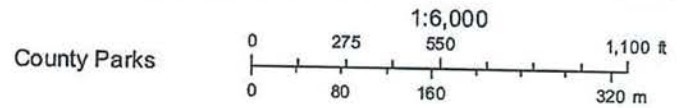
GeoView Map



June 20, 2019

Air Photos: 2019 Hi-Res (4 inch)

- | | | |
|--|--|---|
|  Hospital Locations |  School Locations |  County Boundary |
|  Library Locations |  School Locations |  Downtown Government Bldgs |
|  CCC_Parks | |  Building Footprints Med |



This map is NOT a legal land survey and should not be used or relied upon as such. No warranties, express or implied, are provided with the data, use, accuracy or interpretation.



BROADWAY WEST/ NEAR FPL