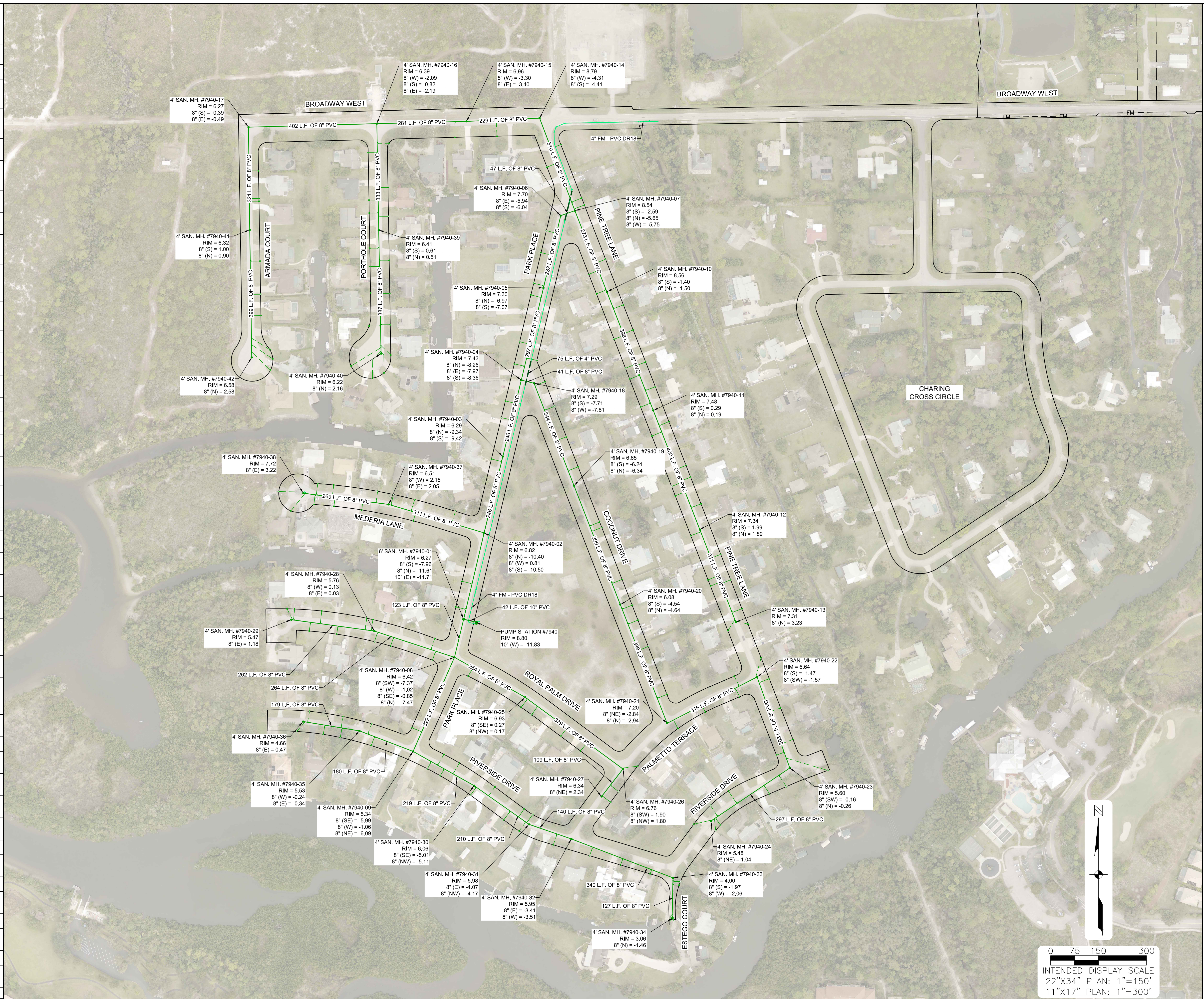


MANHOLE STRUCTURE SCHEDULE

MANHOLE NUMBER	MANHOLE DIAMTER	RIM ELEVATION	INVERTS
7940	6ft	8.80	10" PVC (W) = -11.83
7940-01	6ft	6.27	8" PVC (S) = -7.96 8" PVC (N) = -11.61 10" PVC (E) = -11.71
7940-02	4ft	6.82	8" PVC (S) = -10.50 8" PVC (N) = -10.40 8" PVC (W) = 0.81
7940-03	4ft	6.29	8" PVC (S) = -9.42 8" PVC (N) = -9.34
7940-04	4ft	7.43	8" PVC (N) = -8.26 8" PVC (S) = -8.36 8" PVC (E) = -7.97
7940-05	4ft	7.30	8" PVC (N) = -6.97 8" PVC (S) = -7.07
7940-06	4ft	7.70	8" PVC (E) = -5.94 8" PVC (S) = -6.04
7940-07	4ft	8.54	8" PVC (S) = -2.59 8" PVC (N) = -5.65 8" PVC (W) = -5.75
7940-08	4ft	6.42	8" PVC (SW) = -7.37 8" PVC (N) = -7.47 8" PVC (W) = -1.02 8" PVC (SE) = -0.85
7940-09	4ft	5.34	8" PVC (SE) = -5.99 8" PVC (NE) = -6.09 8" PVC (W) = -1.06
7940-10	4ft	8.56	8" PVC (S) = -1.40 8" PVC (N) = -1.50
7940-11	4ft	7.48	8" PVC (S) = 0.29 8" PVC (N) = 0.19
7940-12	4ft	7.34	8" PVC (S) = 1.99 8" PVC (N) = 1.89
7940-13	4ft	7.31	8" PVC (N) = 3.23
7940-14	4ft	8.79	8" PVC (W) = -4.31 8" PVC (S) = -4.41
7940-15	4ft	6.96	8" PVC (W) = -3.30 8" PVC (E) = -3.40
7940-16	4ft	6.39	8" PVC (W) = -2.09 8" PVC (E) = -2.19 8" PVC (S) = -0.82
7940-17	4ft	6.27	8" PVC (S) = -0.39 8" PVC (E) = -0.49
7940-18	4ft	7.29	8" PVC (S) = -7.71 8" PVC (W) = -7.81
7940-19	4ft	6.65	8" PVC (S) = -6.24 8" PVC (N) = -6.34
7940-20	4ft	6.08	8" PVC (S) = -4.54 8" PVC (N) = -4.64
7940-21	4ft	7.20	8" PVC (NE) = -2.84 8" PVC (N) = -2.94
7940-22	4ft	6.64	8" PVC (S) = -1.47 8" PVC (SW) = -1.57
7940-23	4ft	5.60	8" PVC (SW) = -0.16 8" PVC (N) = -0.26
7940-24	4ft	5.48	8" PVC (NE) = 1.04
7940-25	4ft	6.93	8" PVC (SE) = 0.27 8" PVC (NW) = 0.17
7940-26	4ft	6.76	8" PVC (NW) = 1.80 8" PVC (SW) = 1.90
7940-27	4ft	6.34	8" PVC (NE) = 2.34
7940-28	4ft	5.76	8" PVC (W) = 0.13 8" PVC (E) = 0.03
7940-29	4ft	5.47	8" PVC (E) = 1.18
7940-30	4ft	6.06	8" PVC (SE) = -5.01 8" PVC (NW) = -5.11
7940-31	4ft	5.98	8" PVC (E) = -4.07 8" PVC (NW) = -4.17
7940-32	4ft	5.95	8" PVC (E) = -3.41 8" PVC (W) = -3.51
7940-33	4ft	4.00	8" PVC (S) = -1.97 8" PVC (W) = -2.06
7940-34	4ft	3.06	8" PVC (N) = -1.46
7940-35	4ft	5.53	8" PVC (W) = -0.24 8" PVC (E) = -0.34
7940-36	4ft	4.66	8" PVC (E) = 0.47
7940-37	4ft	6.51	8" PVC (W) = 2.15 8" PVC (E) = 2.05
7940-38	4ft	7.72	8" PVC (E) = 3.22
7940-39	4ft	6.41	8" PVC (S) = 0.61 8" PVC (N) = 0.51
7940-40	4ft	6.22	8" PVC (N) = 2.16
7940-41	4ft	6.32	8" PVC (S) = 1.00 8" PVC (N) = 0.90
7940-42	4ft	6.58	8" PVC (N) = 2.58



DAVID BRICE TROUTEAUX, PE
 FL License No. 69783

Village of Estero

Village of Estero - Broadway West Water Main and Sewer Improvements

Sections 29 Township 46 South, Range 25 East
 Lee County, Florida

NO.	DATE	DESCRIPTION

DATE: JUNE 29, 2023
 PROJECT NO. 20225130-000
 FILE NO. 29-46-25
 SCALE: AS SHOWN

Sanitary Sewer

SHEET NUMBER
07

\\fms01\Drawings\2022\20225130-000\Utilities\Drawings\20225130-000_Master Plans.dwg (Sewer A) rea Jun 26, 2023 - 4:10pm

Village of Estero

Village of Estero - Broadway West
Water Main and Sewer Improvements
Sections 29 Township 46 South, Range 25 East
Lee County, Florida

NO.	DESCRIPTION	DATE

DATE: JUNE 29, 2023
PROJECT NO. 20225130-000
FILE NO. 29-46-25
SCALE: AS SHOWN

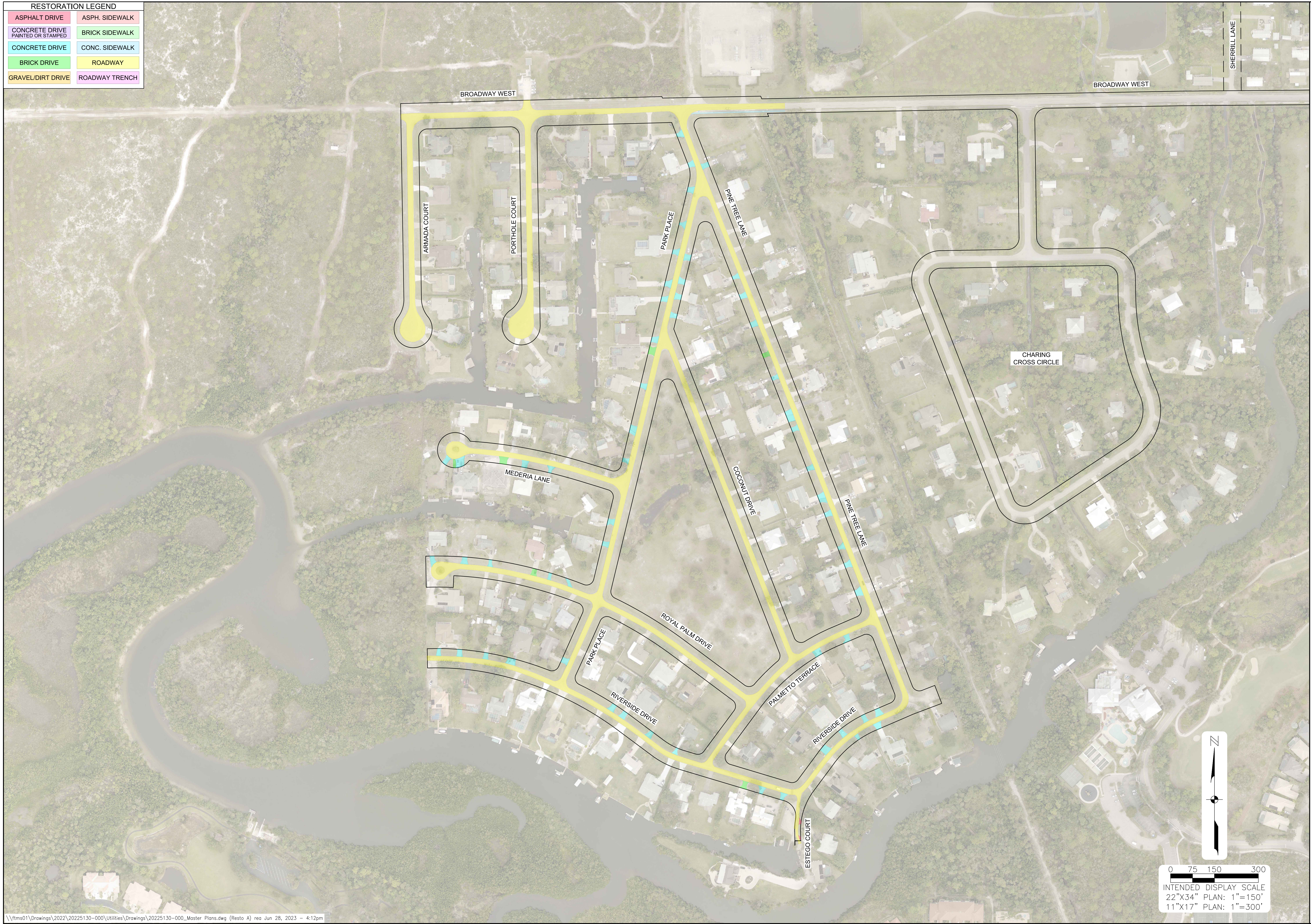
Water Main

SHEET NUMBER

08



RESTORATION LEGEND	
ASPHALT DRIVE	ASPH. SIDEWALK
CONCRETE DRIVE PAINTED OR STAMPED	BRICK SIDEWALK
CONCRETE DRIVE	CONC. SIDEWALK
BRICK DRIVE	ROADWAY
GRAVEL/DIRT DRIVE	ROADWAY TRENCH



JOHNSON ENGINEERING
 JOHNSON ENGINEERING, INC.
 2122 JOHNSON STREET
 P.O. BOX 1550
 FORT MYERS, FLORIDA 33902-1550
 PHONE: (239) 334-0046
 E.B. #642 & L.B. #642

DAVID BRICE TROUTEAUX, PE
 FL License No. 69783

Village of Estero

Village of Estero - Broadway West Water Main and Sewer Improvements

Sections 29 Township 46 South, Range 25 East
 Lee County, Florida

NO.	REVISIONS DESCRIPTION	DATE

DATE: JUNE 29, 2023
 PROJECT NO. 20225130-000
 FILE NO. 29-46-25
 SCALE: AS SHOWN

Restoration

SHEET NUMBER
09

