

COMPONENTS OF CONTRACT PLANS SET

- ROADWAY PLANS
- SIGNALIZATION PLANS
- LIGHTING PLANS
- LANDSCAPE PLANS
- STRUCTURE PLANS

VILLAGE OF ESTERO

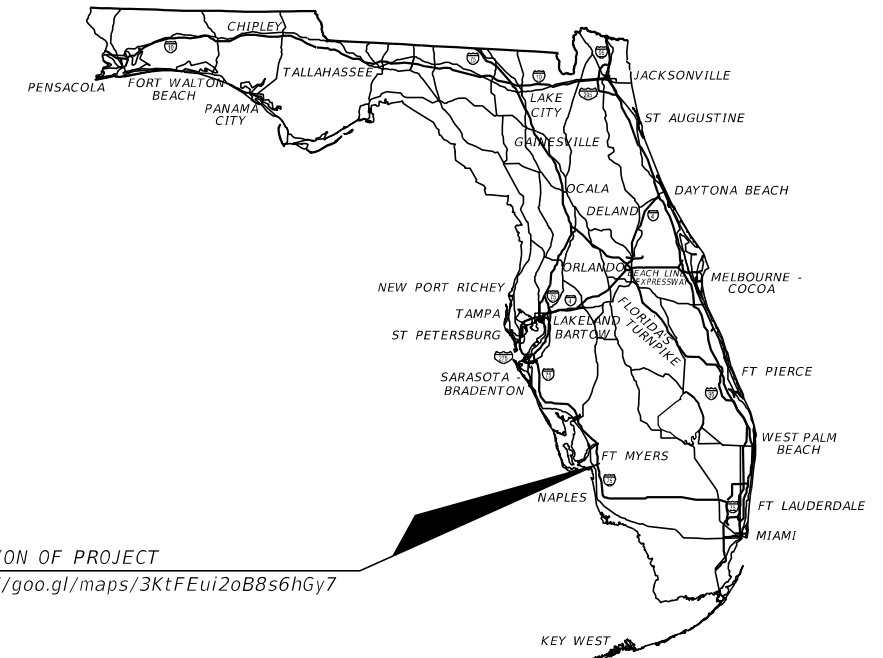
SIGNALIZATION PLANS

*SANDY LANE BICYCLE/
PEDESTRIAN IMPROVEMENTS*

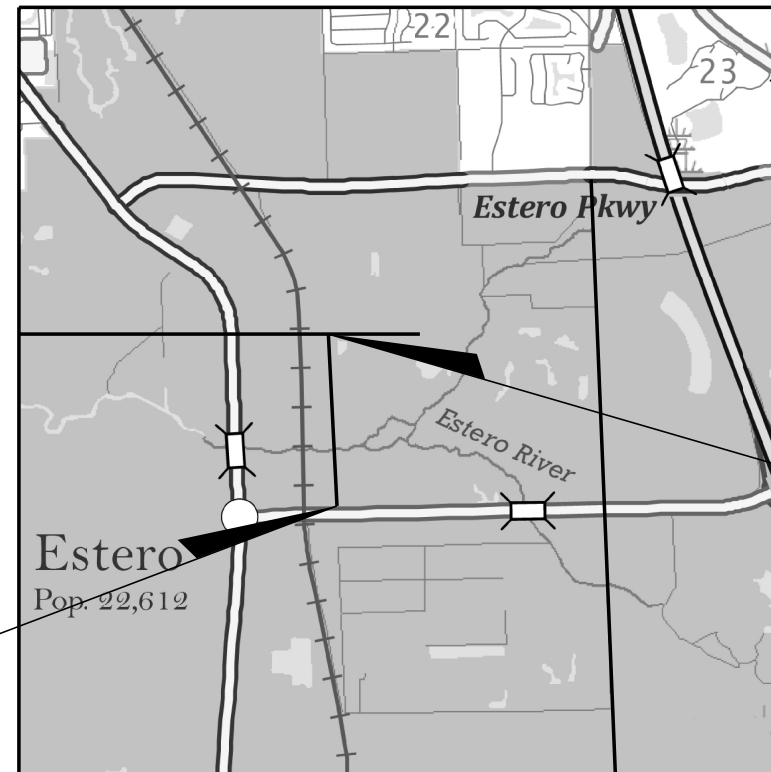
LEE COUNTY, FLORIDA
COUNTY PROJECT ID# CN 2022-02

INDEX OF SIGNALIZATION PLANS

SHEET NO.	SHEET DESCRIPTION
T-1	KEY SHEET
T-2	SIGNATURE SHEET
T-3	TABULATION OF QUANTITIES
T-4	PEDESTRIAN SIGNALS



LOCATION OF PROJECT
<https://goo.gl/maps/3KtFEui2oB8s6hGy7>



Begin Project
Begin Construction
STA. 100+60.50

End Project
End Construction
STA. 139+17.03

100% PLAN SUBMITTAL

VILLAGE OF ESTERO PROJECT MANAGER:
DAVID WILLEMS, P.E.

PLANS PREPARED BY:
ATKINS

800 WATERFORD WAY, SUITE 700
MIAMI, FLORIDA 33126
FBPE CERTIFICATE OF
AUTHORIZATION NO. 24

SIGNALIZATION PLANS ENGINEER OF RECORD
MICHELLE H. SCHOFNER, P.E.
P.E. # 51977

GOVERNING STANDARD PLANS:

Florida Department of Transportation, FY 2023-24 Standard Plans for Road and Bridge Construction and applicable Interim Revisions (IRs).

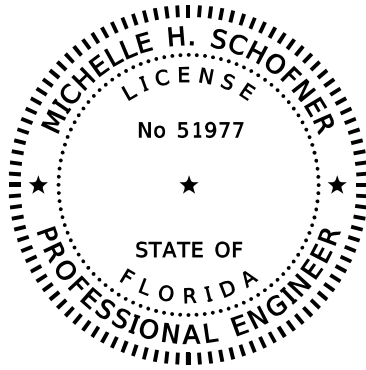
Standard Plans for Road Construction and associated IRs are available at the following website: <http://www.fdot.gov/design/standardplans>

Standard Plans for Bridge Construction are included in the Structures Plans Component.

GOVERNING STANDARD SPECIFICATIONS:

Florida Department of Transportation, FY 2023-24 Standard Specifications for Road and Bridge Construction at the following website: <http://www.fdot.gov/programmanagement/Implemented/SpecBooks>

FISCAL YEAR	SHEET NO.
2023	T-1



THIS ITEM HAS BEEN DIGITALLY
SIGNED AND SEALED BY


ON THE DATE ADJACENT TO THE SEAL

PRINTED COPIES OF THIS DOCUMENT ARE
NOT CONSIDERED SIGNED AND SEALED
AND THE SIGNATURE MUST BE VERIFIED
ON ANY ELECTRONIC COPIES.

ATKINS NORTH AMERICA, INC
4030 W BOY SCOUT BLVD
TAMPA, FL 33607
CERTIFICATE OF AUTHORIZATION NUMBER: 24
MICHELLE H. SCHOFNER, P.E. NO. 51977

THE ABOVE NAMED PROFESSIONAL ENGINEER SHALL BE RESPONSIBLE
FOR THE FOLLOWING SHEETS IN ACCORDANCE WITH RULE 61G15-23.004, F.A.C.

<u>SHEET NO.</u>	<u>SHEET DESCRIPTION</u>
T-1	KEY SHEET
T-2	SIGNATURE SHEET
T-3	TABULATION OF QUANTITIES
T-4	PEDESTRIAN SIGNALS

REVISIONS				 4170 W. NEPTUNE STREET TAMPA, FLORIDA 33629 FBPE CERTIFICATE OF AUTHORIZATION NO. 24 MICHELLE H. SCHOFNER, P.E. #51977	<i>SANDY LANE BICYCLE/ PEDESTRIAN IMPROVEMENTS</i>			<i>SIGNATURE SHEET</i>	SHEET NO.
DATE	DESCRIPTION	DATE	DESCRIPTION		CLIENT	PROJECT #			T-2
					VILLAGE OF ESTERO	CN 2022-02			

TABULATION OF QUANTITIES

PAY ITEM NO.	DESCRIPTION	UNIT	SHEET NUMBERS														TOTAL THIS SHEET		GRAND TOTAL	
			T-4														PLAN	FINAL	PLAN	FINAL
			PLAN	FINAL	PLAN	FINAL	PLAN	FINAL	PLAN	FINAL	PLAN	FINAL	PLAN	FINAL						
630-2-11	CONDUIT, FURNISH & INSTALL, OPEN TRENCH	LF	85														85		85	
632-7-1	SIGNAL CABLE - NEW OR RECONSTRUCTED INTERSECTION, FURNISH & INSTALL	PI	1														1		1	
635-2-11	PULL & SPLICE BOX, F&I, 13" x 24" COVER SIZE	EA	1														1		1	
646-1-11	ALUMINUM SIGNALS POLE, PEDESTAL	EA	3														3		3	
653-1-11	PEDESTRIAN SIGNAL, FURNISH & INSTALL LED COUNTDOWN, 1 WAY	AS	2														2		2	
653-1-12	PEDESTRIAN SIGNAL, FURNISH & INSTALL LED COUNTDOWN, 2 WAY	AS	1														1		1	
653-1-60	PEDESTRIAN SIGNAL, REMOVE PED SIGNAL - POLE/PEDESTAL TO REMAIN	AS	2														2		2	
665-1-12	PEDESTRIAN DETECTOR, FURNISH & INSTALL, ACCESSIBLE	EA	4														4		4	
671-2-40	TRAFFIC CONTROLLER, MODIFY	EA	1														1		1	
676-1-500	TRAFFIC SIGNAL CONTROLLER CABINET, ADJUST/MODIFY	EA	1														1		1	
711-11-123	THERMOPLASTIC, STANDARD, WHITE, SOLID, 12" FOR CROSSWALK AND ROUNDABOUT	LF	330														330		330	
711-11-125	THERMOPLASTIC, STANDARD, WHITE, 24" FOR STOP LINE AND CROSSWALK	LF	380														380		380	

REVISIONS			
DATE	DESCRIPTION	DATE	DESCRIPTION

ATKINS
 4170 W. NEPTUNE STREET
 TAMPA, FLORIDA 33629
 FBPE CERTIFICATE OF AUTHORIZATION NO. 24
 MICHELLE H. SCHOFNER, P.E. #51977

SANDY LANE BICYCLE/
 PEDESTRIAN IMPROVEMENTS

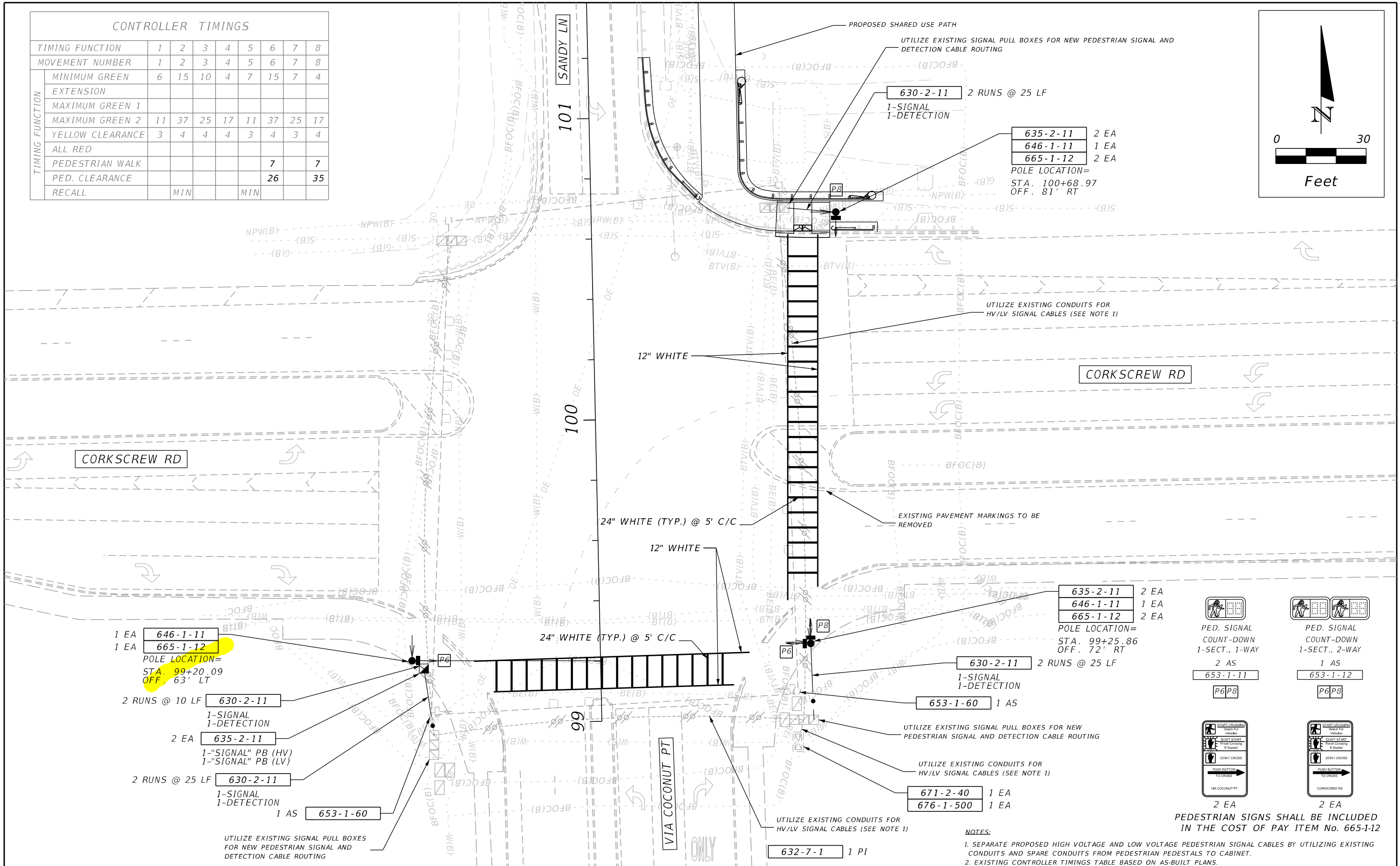
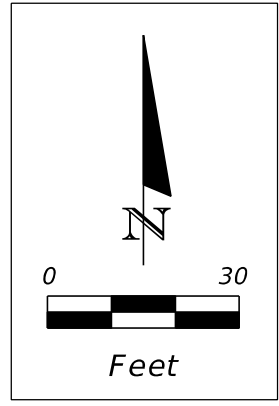
CLIENT: VILLAGE OF ESTERO PROJECT #: CN 2022-02



TABULATION OF QUANTITIES

SHEET NO. T-3

CONTROLLER TIMINGS								
TIMING FUNCTION	1	2	3	4	5	6	7	8
MOVEMENT NUMBER	1	2	3	4	5	6	7	8
MINIMUM GREEN	6	15	10	4	7	15	7	4
EXTENSION								
MAXIMUM GREEN 1								
MAXIMUM GREEN 2	11	37	25	17	11	37	25	17
YELLOW CLEARANCE	3	4	4	4	3	4	3	4
ALL RED								
PEDESTRIAN WALK						7	7	
PED. CLEARANCE						26	35	
RECALL		MIN			MIN			



1 EA 646-1-11
1 EA 665-1-12
POLE LOCATION=
STA. 99+20.09
OFF. 63' LT

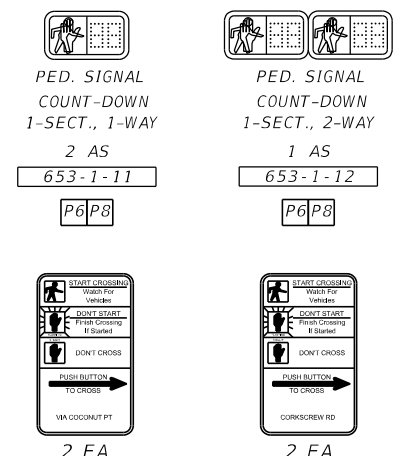
2 RUNS @ 10 LF 630-2-11
1-SIGNAL
1-DETECTION

2 EA 635-2-11
1-"SIGNAL" PB (HV)
1-"SIGNAL" PB (LV)

2 RUNS @ 25 LF 630-2-11
1-SIGNAL
1-DETECTION

1 AS 653-1-60

UTILIZE EXISTING SIGNAL PULL BOXES FOR NEW PEDESTRIAN SIGNAL AND DETECTION CABLE ROUTING



PEDESTRIAN SIGNS SHALL BE INCLUDED IN THE COST OF PAY ITEM No. 665-1-12

NOTES:
1. SEPARATE PROPOSED HIGH VOLTAGE AND LOW VOLTAGE PEDESTRIAN SIGNAL CABLES BY UTILIZING EXISTING CONDUITS AND SPARE CONDUITS FROM PEDESTRIAN PEDESTALS TO CABINET.
2. EXISTING CONTROLLER TIMINGS TABLE BASED ON AS-BUILT PLANS.

REVISIONS			
DATE	DESCRIPTION	DATE	DESCRIPTION

ATKINS
4170 W. NEPTUNE STREET
TAMPA, FLORIDA 33629
FBPE CERTIFICATE OF AUTHORIZATION NO. 24
MICHELLE H. SCHOFNER, P.E. #51977

SANDY LANE BICYCLE/ PEDESTRIAN IMPROVEMENTS

CLIENT: VILLAGE OF ESTERO PROJECT #: CN 2022-02

PEDESTRIAN SIGNALS

Village of ESTERO

SHEET NO. T-4