

WORKSHOP ITEM SUMMARY SHEET
VILLAGE COUNCIL MEETING
January 4, 2022

Agenda Item:

Broadway West Utility Extension Project

Description:

Village of Estero staff will provide an update on the design of the Broadway West Utility Extension Project. The project is currently proposed to include two sanitary sewer lift station. One for Quarterdeck Cove & Estero River Heights and a second for Cranbrook Harbor, Sherrill Lane, and Luettich Lane. The Village's consultant has identified three alternative locations for each lift station and are now working with property owners to finalize the design.

Financial Impact:

Project's financial impact will be identified as the project's design is finalized.

Prepared by: David Willems, P.E.

Attachments:

1. Presentation



Broadway West UEP

Project Update

David Willems, P.E.



Outline

1. Project Location
2. Plans
 1. Quarterdeck Cove & Estero River Heights
 2. Cranbrook Harbor, Sherrill Lane & Leuttich Lane
3. Project Schedule

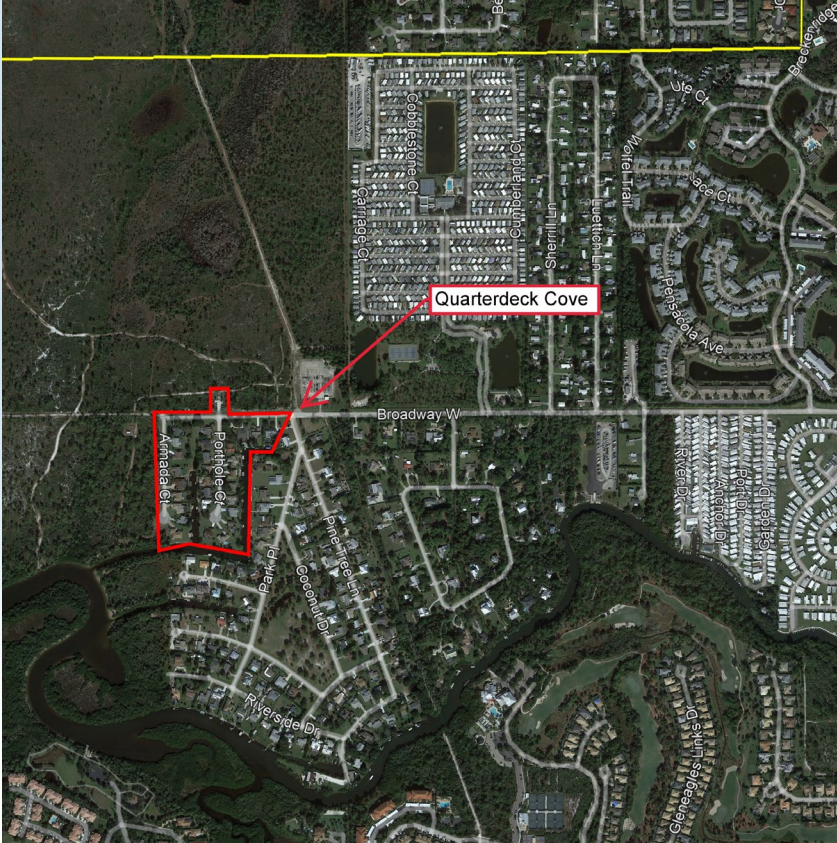


Project Location



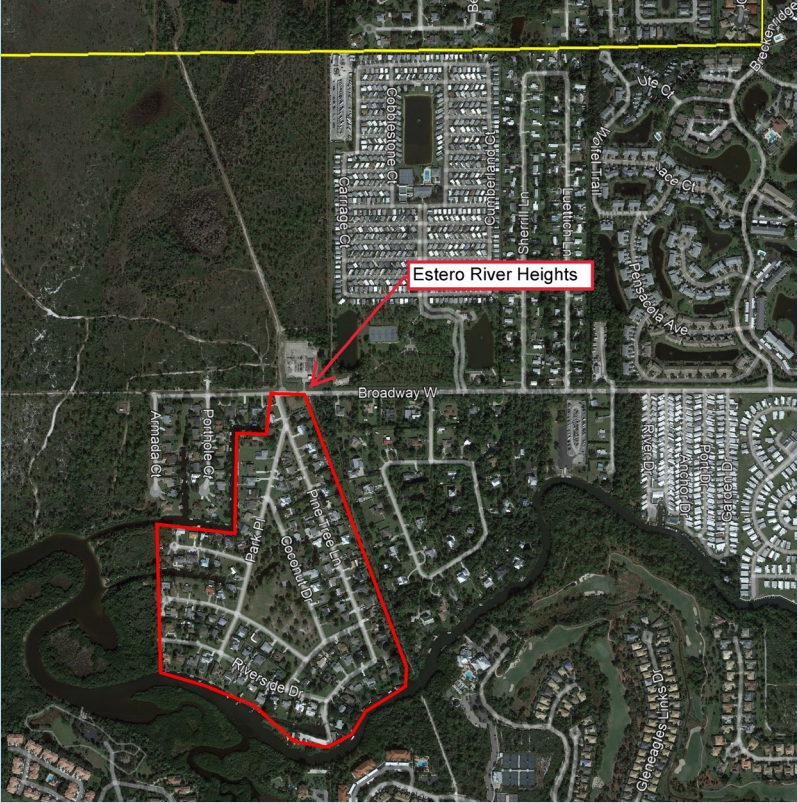


Quarterdeck Cove





Estero River Heights

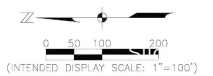


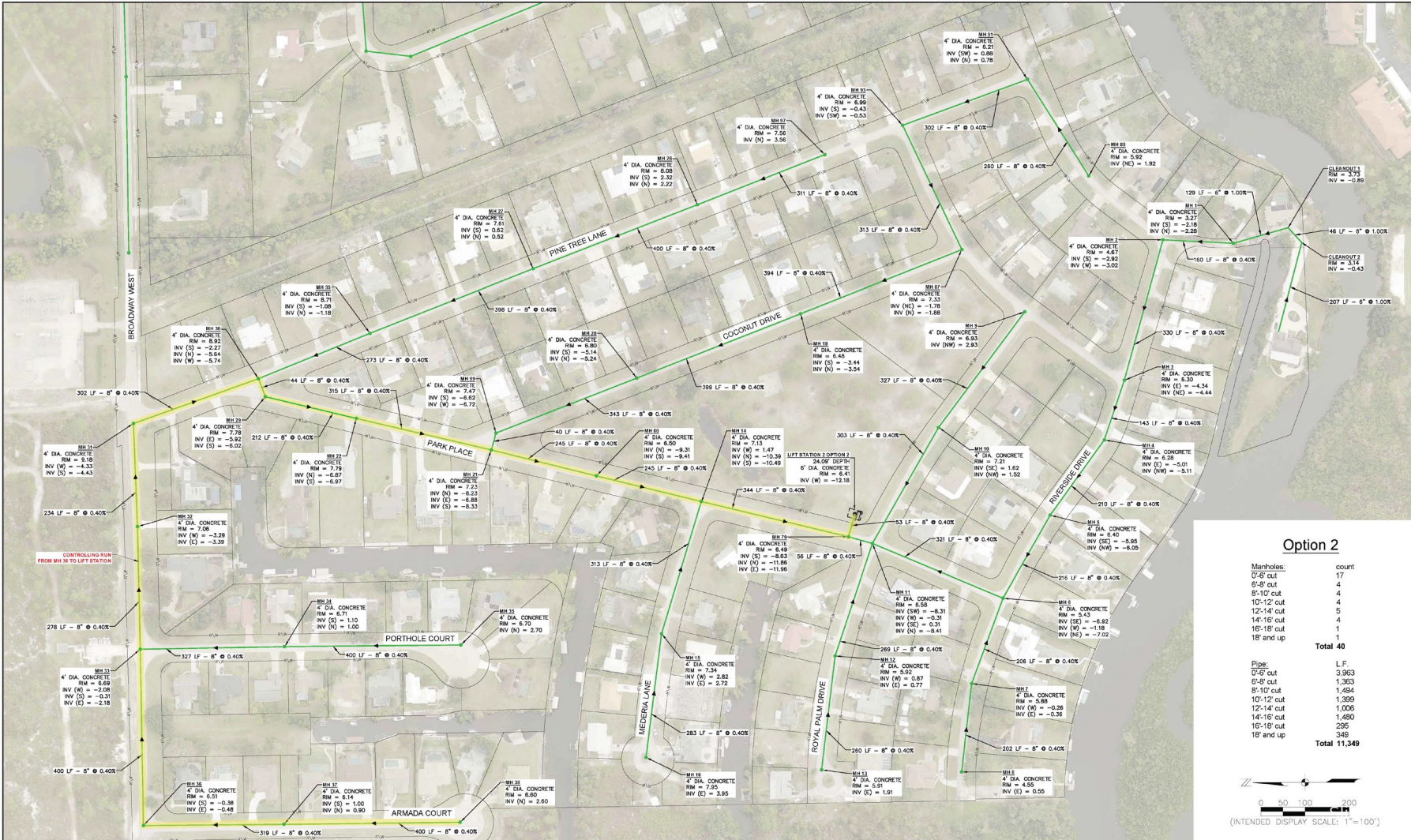


Option 1

Manholes:	count
0-6" cut	17
6-8" cut	4
8-10" cut	4
10-12" cut	4
12-14" cut	5
14-16" cut	4
16-18" cut	2
18" and up	
Total	40

Pipe:	LF
0-6" cut	3,963
6-8" cut	1,363
8-10" cut	1,494
10-12" cut	1,399
12-14" cut	1,016
14-16" cut	1,404
16-18" cut	710
18" and up	
Total	11,349

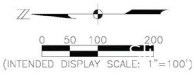




Option 2

Manholes:	count
0'-8" cut	17
6'-8" cut	4
8'-10" cut	4
10'-12" cut	4
12'-14" cut	5
14'-16" cut	4
16'-18" cut	1
18" and up	1
Total 40	

Pipe:	L.F.
0'-8" cut	3,963
6'-8" cut	1,363
8'-10" cut	1,494
10'-12" cut	1,399
12'-14" cut	1,006
14'-16" cut	1,480
16'-18" cut	295
18" and up	349
Total 11,349	

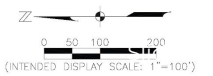




Option 3

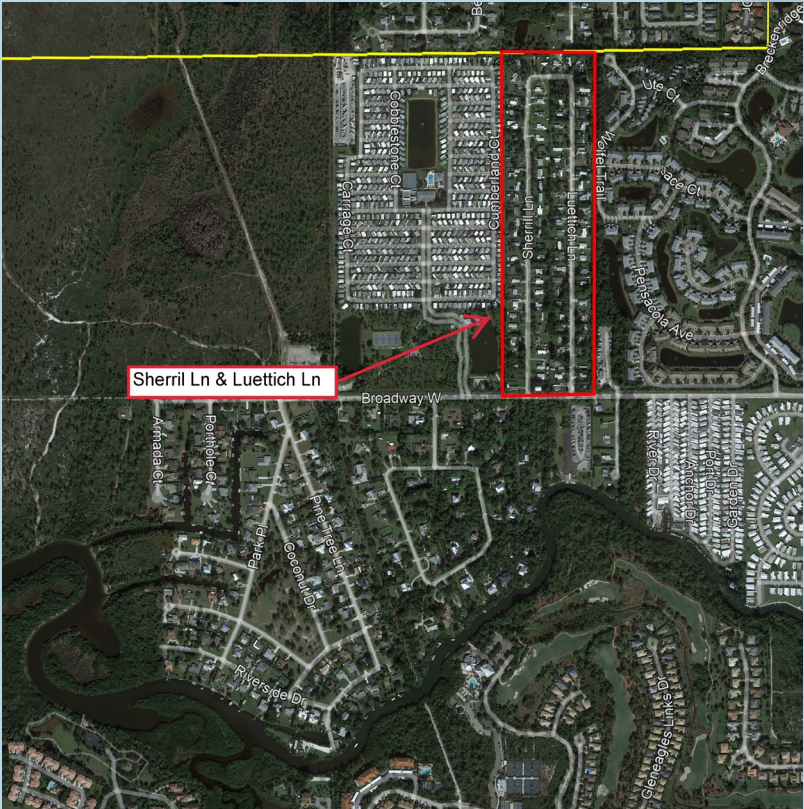
Manholes:	count
0'-6" cut	16
6'-8" cut	8
8'-10" cut	4
10'-12" cut	2
12'-14" cut	3
14'-16" cut	4
16'-18" cut	2
18" and up	2
Total	41

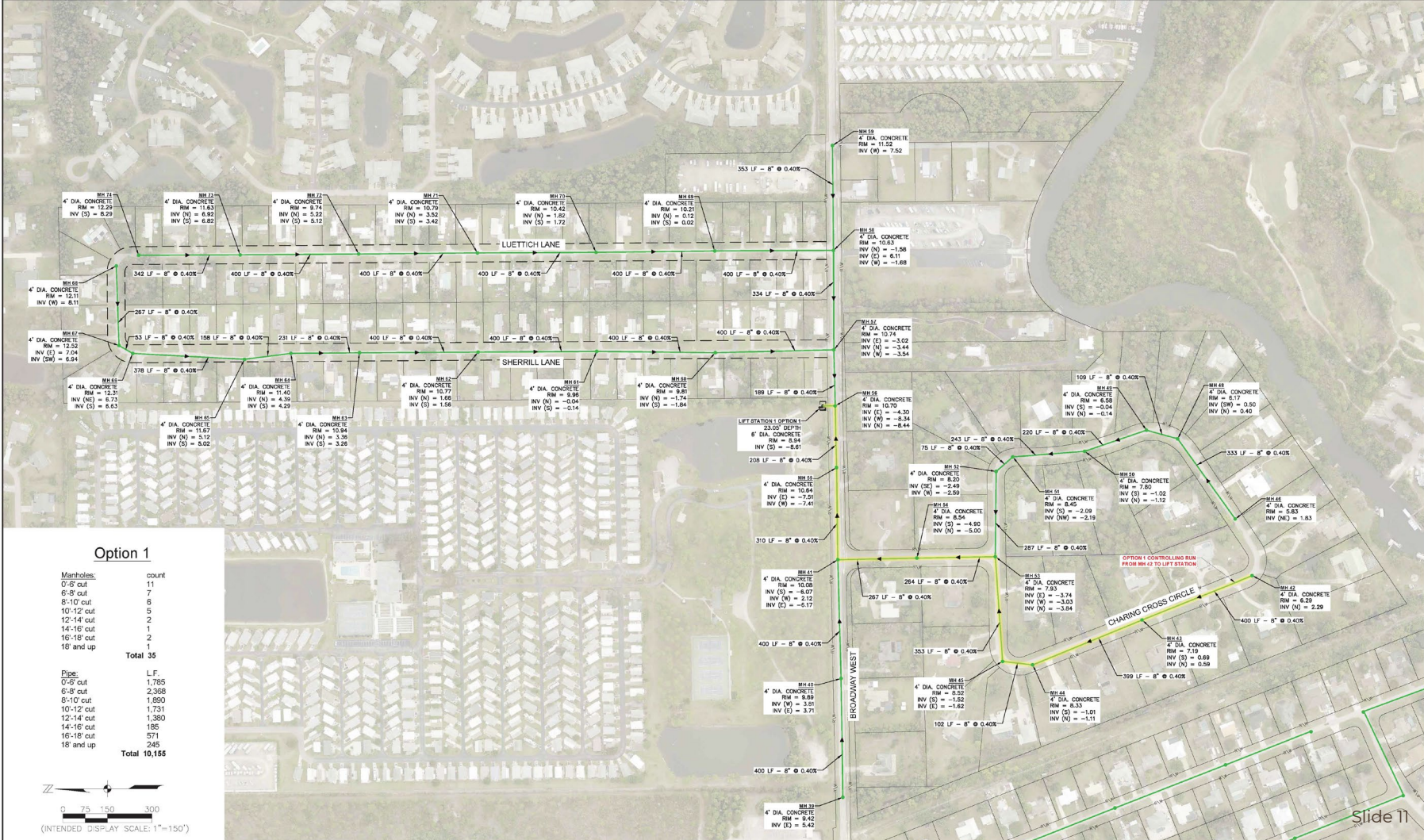
Pipe:	L.F.
0'-6" cut	3,762
6'-8" cut	2,175
8'-10" cut	1,508
10'-12" cut	1,208
12'-14" cut	326
14'-16" cut	1,052
16'-18" cut	637
18" and up	602
Total	11,270





Sherrill Ln & Luettich Ln

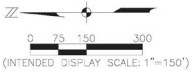


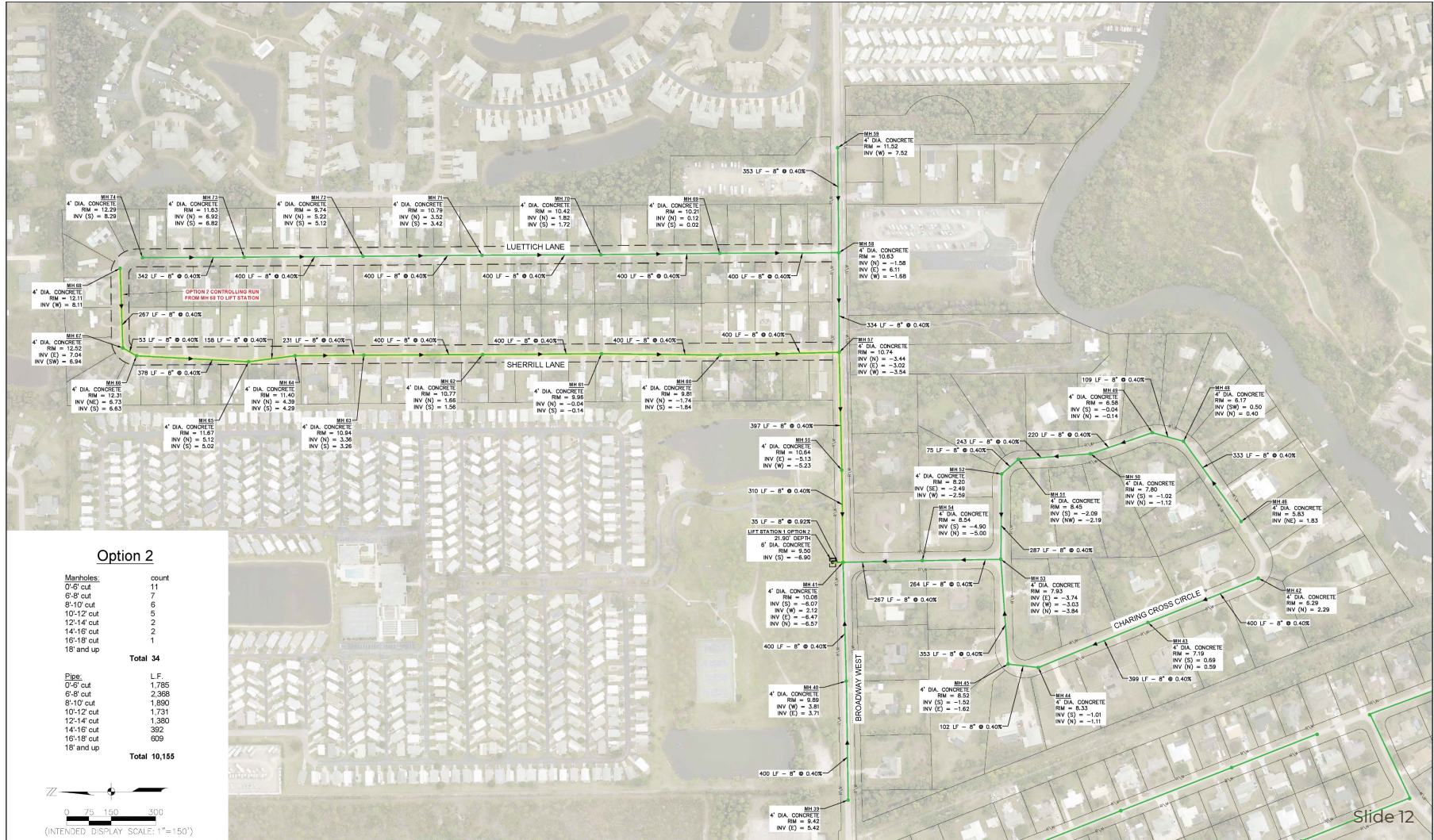


Option 1

Manholes:	count
0'-5" cut	11
6'-8" cut	7
8'-10" cut	6
10'-12" cut	5
12'-14" cut	2
14'-16" cut	1
16'-18" cut	2
18" and up	2
Total	35

Pipe:	L.F.
0'-5" cut	1,785
6'-8" cut	2,368
8'-10" cut	1,890
10'-12" cut	1,731
12'-14" cut	1,380
14'-16" cut	185
16'-18" cut	571
18" and up	245
Total	10,155





Option 2

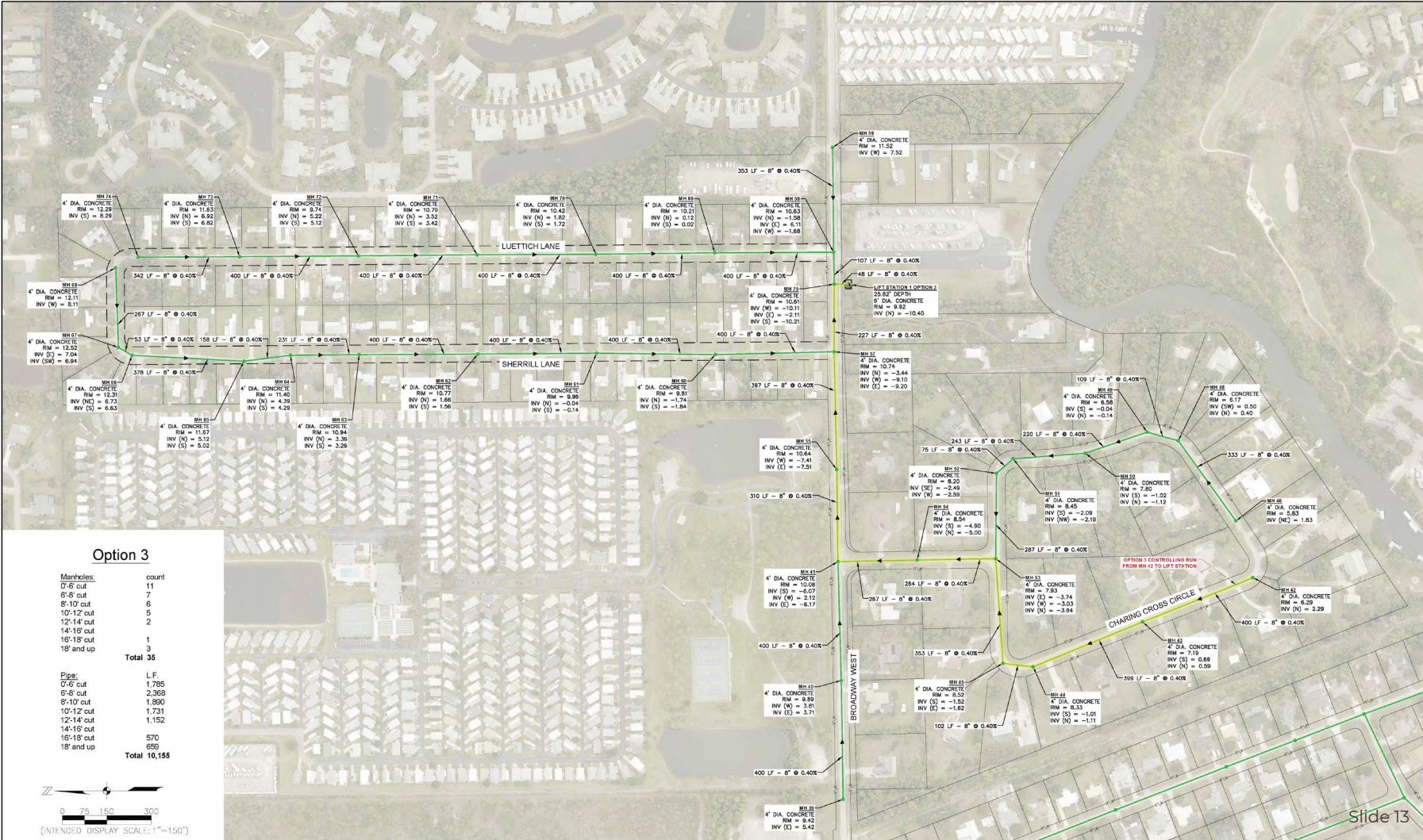
Manholes:	count
0'-6" cut	11
6'-8" cut	7
8'-10" cut	6
10'-12" cut	5
12'-14" cut	2
14'-16" cut	2
16'-18" cut	1
18" and up	

Total 34

Pipe:	L.F.
0'-6" cut	1,785
6'-8" cut	2,366
8'-10" cut	1,850
10'-12" cut	1,731
12'-14" cut	1,380
14'-16" cut	392
16'-18" cut	609
18" and up	

Total 10,155





Option 3

Manholes:	count
0'-6" cut	11
6'-8" cut	7
8'-10" cut	6
10'-12" cut	5
12'-14" cut	2
14'-16" cut	1
16'-18" cut	1
18" and up	3
Total	35

Pipe:	L.F.
0'-6" cut	1,795
6'-8" cut	2,358
8'-10" cut	1,890
10'-12" cut	1,731
12'-14" cut	1,152
14'-16" cut	570
16'-18" cut	659
18" and up	659
Total	10,155



(INTENDED DISPLAY SCALE: 1" = 150')



Project Schedule

60% Plans Complete:	2/14/2023
100% Plans Complete:	6/16/2023
Permitting Complete:	9/14/2023
Bidding:	TBD
Construction:	TBD

Up to three public information meeting will be held to provide information to residents



QUESTIONS?